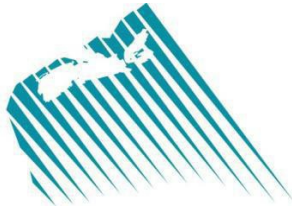


CNSOPB



CANADA-NOVA SCOTIA
OFFSHORE PETROLEUM BOARD

**INFORMATION ON WELL DATA, GEOLOGICAL DATA,
AND
GEOPHYSICAL DATA**

December 2019

BOARD INFORMATION

Head Office

Canada - Nova Scotia Offshore Petroleum Board
8th Floor TD Centre
1791 Barrington Street
Halifax Nova Scotia
B3J 3K9
Canada

Phone: (902) 422-5588
Fax: (902) 422-1799
URL: <http://www.cnsopb.ns.ca>

Geoscience Research Centre

Canada - Nova Scotia Offshore Petroleum Board
Geoscience Research Centre
201 Brownlow Avenue, Suite 27
Dartmouth, Nova Scotia
B3B 1W2
Canada

Phone: (902) 468-3994
Fax: (902) 468-4584
E-mail: info@cnsopb.ns.ca

TABLE OF CONTENTS

Contents

BOARD INFORMATION.....	2
TABLE OF CONTENTS	3
INTRODUCTION	4
APPLICABLE LEGISLATION	4
AREA OF JURISDICTION.....	4
EXPLANATION OF PROGRAM NUMBERS FOR GEOLOGICAL AND GEOPHYSICAL PROGRAMS	5
RELEASED GEOLOGICAL AND RELATED DATA	7
RELEASED PHYSICAL ENVIRONMENTAL DATA	9
RELEASED WELLSITE SURVEY DATA.....	11
RELEASED GEOPHYSICAL DATA	14
RELEASED SAMPLE REPORTS.....	23
DIRECTORY OF OFFSHORE WELLS.....	26

INTRODUCTION

This publication contains a Directory of Wells and lists released Geological and Geophysical Reports available from the Canada-Nova Scotia Offshore Petroleum Board ("CNSOPB" or the "Board") for the Nova Scotia offshore area. Data on significant discoveries and the ownership of interests is also included.

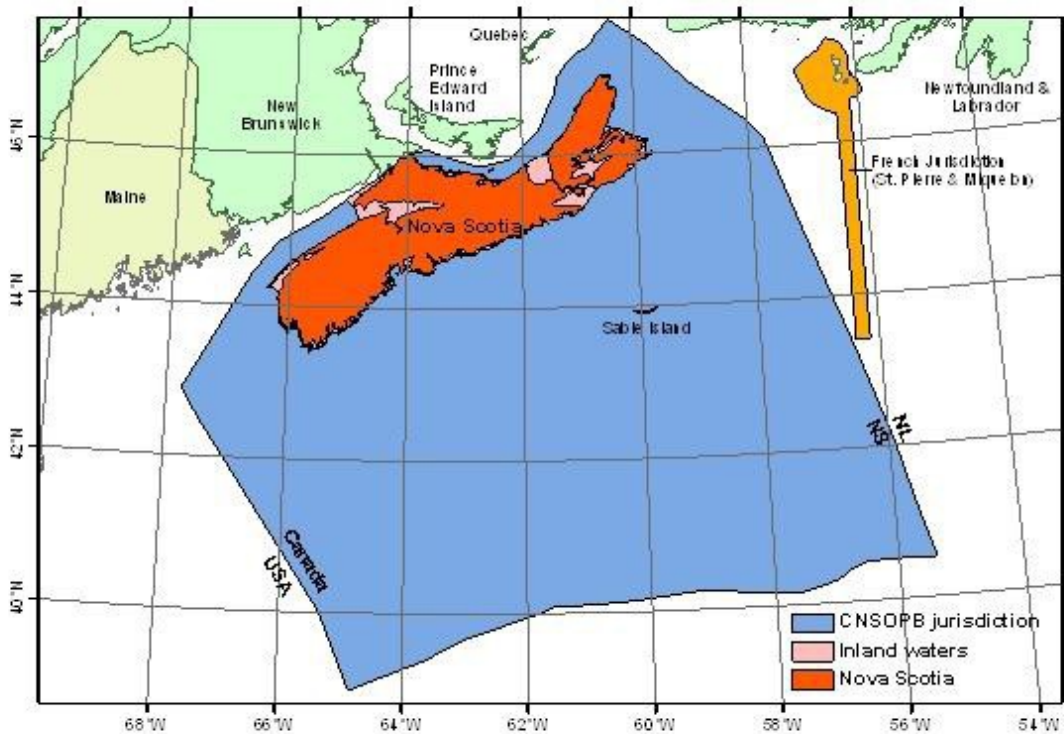
APPLICABLE LEGISLATION

Petroleum exploration and production activities in the Nova Scotia offshore area are administered by the Board pursuant to the *Canada-Nova Scotia Offshore Petroleum Resources Accord Implementation Act*, S.C. 1988, c.28, as amended, and the *Canada-Nova Scotia Offshore Petroleum Resources Accord Implementation (Nova Scotia) Act*, S.N.S. 1987, c.3, as amended (the "legislation") and regulations made thereunder. The Board has issued Guidelines in respect of certain matters, a list of which is included in Section 10.

AREA OF JURISDICTION

The geographic limits of the Board's jurisdiction are set out in Schedule I to the legislation (see Fig. 1). This area (the "offshore area") is subject to an area of French jurisdiction around the islands of St. Pierre and Miquelon, which is not reflected in Schedule I as it resulted from a later adjudication. The French Maritime Boundary is described in Appendix II.

Figure 1



EXPLANATION OF PROGRAM NUMBERS FOR GEOLOGICAL AND GEOPHYSICAL PROGRAMS

The following released geological, geophysical and related reports (Sections 2, 3 and 4) are listed alphabetically by program number and company code. Upon approval of an application to conduct a geophysical or geological program, a unique program number is assigned to the project by the regulator. For programs completed prior to January 1990, this number was assigned by the Federal Department of Energy, Mines and Resources (EMR). The number is coded to contain:

- The geographic region to which the program relates;
- The type of geophysical or geological work proposed;
- The company operating the program; and
- The sequential number of that type of program operated by that company.

For example, a typical program number for offshore Nova Scotia *could* be 8624-M003-004E. It follows the format ABCD-EFGH-IJKL, each sequence of letters corresponding to an alphanumeric code.

AB represented in the example program number as the '86' in 8624-M003-004E, which identifies an East Coast offshore exploration program. NS identifies offshore Nova Scotia Programs completed after January of 1990 and approved by the Canada-Nova Scotia Offshore Petroleum Board.

CD is represented in the example program number, as the '24' in 8624-M003-004E) identifies the type of geological/geophysical work where:

20	combined geophysical survey	35	purchase of geological studies
21	aeromagnetic survey	36	isotope age dating
23	seafloor gravity survey	37	in-house geological studies
24	seismic reflection survey	39	onshore geological surveys
25	seismic refraction survey	40	research program/environmental
26	shallow seismic, seabed survey	41	environmental data
27	(re)processing, (re)interpretation	42	chemistry & toxicity
28	geophysical (other)	43	aesthetic environmental
30	combined geological program	44	basis of design
31	offshore geological program	45	pipeline geophysical survey
32	paleontological/palynological study	46	*geotechnical
33	geochemical study	48	development plan
34	petrography		

**Note: prior to 2004 Geotechnical Programs were classified with CD represented as 26 – Shallow Seismic, seabed survey*

EFGH is represented in the example program number, as the 'M003' in 8624-M003-004E is the operator or company code where:

A004	Amoco	G011	Geophoto Services
A012	Austin Exploration	G014	Great Plains Development
A014	Aqua Terra	G020	Gebco (US) Inc.
A024	Amoco Production Co.	G026	Imperial Oil Resources
B003	B.P.O.P.	G041	Government of Canada
B004	Banner Petroleum Limited	G065	Geco-Prakla
B011	Bow Valley	G075	GX Technology
C002	Canadian Export Oil & Gas	H005	Home Oil
C004	Chevron Canada	H006	Husky Oil Operations Ltd.

C012	Canadian Reserve Oil and Gas	H007	Hudson's Bay Oil and Gas
C015	Caravel / Catalina Exploration	I003	Imperial Oil Resources Limited
C020	Canadian Superior	J001	Esso Resources
C033	Canadian Ashland Exploration	J008	ICG Resources
C034	Central Del-Rio Oils	J013	Jebco Surveys
C039	Cavalier Energy Inc.	K006	Kerr, J. William & Associates
C055	Canterra	L023	LASMO Nova Scotia Limited
C146	Canadian Superior Energy Inc.	M003	Mobil Oil Canada
D001	Digicon Exploration	M006	Murphy Oil
D003	Dome Petroleum	M013	McDermott, J. R.
D004	Delta Exploration	M055	Marathon Canada Limited
D009	Dome Canada	N005	Norcen Energy Resources
D015	Dalhousie University	G011	Geophoto Services
D031	Devon Canada Corporation	N011	Nova Scotia Resources Limited
E006	Exxon	O011	Onaping Resources Limited
E040	ExxonMobil Canada Limited	P003	PanCanadian Petroleum Limited
E043	EnCana Corporation	P011	Pacific Petroleums
G001	Gulf Canada	P028	Petro-Canada
G005	Geophysical Services	R005	Robertson Research - N. America
S001	Siebens Oil & Gas	T013	Transalta Oil & Gas
S003	Shenandoah Oil	T021	Texaco Canada Resources
S006	Shell Canada Resources	T036	Teknica Resource Develop. Ltd
S008	Sun Oil	T063	TGS-NOPEC Geophysical Co.
S009	Scurry-Rainbow Oil	U003	Union Oil
S014	SOQUIP	V001	Voyager Petroleums
S016	Sultan Exploration	V003	Veritas Seismic
S024	Seiscan Delta	W006	Western Decalta
S047	Simin Expl. Consultants Ltd	W013	Western Geophysical
S092	St. Mary's University	W030	Western-Geo Canada
T007	Texaco Canada		

JK is represented in the example program number, as the '004' in 8624-M003-004E is the sequential program number of that program-type by the same operator.

L is represented in the example program number, as the 'E' in 8624-M003-004E is the program type identifier where:

- E – Exclusive
- P – Participation or speculative program
- DT – Data Trade
- DA – Data Acquisition

Therefore, the program number 8624-M003-044E indicates the 44th Seismic Reflection Survey in the East Coast Offshore Region conducted exclusively for Mobil, and carried out prior to January, 1990.

RELEASED GEOLOGICAL AND RELATED DATA

PROGRAM #	DESCRIPTION
8630-A012-002P	1974 Regional Participation Survey-Stratigraphic Logging And Formation Evaluation For 34 Wells-Scotian Shelf, Grand Banks, & Gulf Of St. Lawrence
8631-A004-001E	1965 Grand Banks Sample Dredging & Piston Coring Project
8631-H007-001E	1969 Ocean Bottom Conditions Offshore Prince Edward Island Locations; Anchorage Investigations Offshore Prince Edward Island Locations
8631-K006-001P	1983 Geology And Petroleum Potential Of The Scotian Shelf
8631-M003-001E	1965 Geological Report on Sable Island Corehole Program
8631-M003-002E	1972 Soil & Foundation Investigation, Sable Island for Thebaud P-84
8631-S006-001E	1970 Marine Hydrocarbon Survey for Chippewa, West & East Orpheus
8631-S006-002E	1971 Marine Hydrocarbon Survey Continental Slope, for Chippewa, Tuscarora, Jason & Roseway Basins Area
8631-S006-003E	1971 Soil & Foundation Investigation Reports for: Oneida O-25, Naskapi N-30, Huron P-96, Onondaga O-95, Micmac J-77, Abenaki L-97
8632-A004-003E	1971 Palynologic Analysis of Sarep H.Q. Brion Island No. 1 Gulf of St. Lawrence
8633-A004-001E	1970 Report on Source Rock Evaluation Brion Island No. 1
8633-A004-004E	1987 Geochem SNIFFER Report, Sable Island, Bay Of Fundy
8633-A004-005E	1987 Sable Island Airborne, Air Trace Geochem Survey
8633-C020-001E	1976 Maturation Study and Source Rock Evaluation of Four Wells Drilled On The Grand Banks, Offshore Newfoundland
8633-R005-001P	1976 Geochem Evaluation and Biostratigraphy Reports for: Bluenose G-47, Dauntless D-35, Eagle D-21, Micmac H-86, Mohawk B-93, Mohican I-100, Oneida O-25, Onondaga E-84, Primrose N-50, Sauk A-57, Thebaud P-84, Triumph P-50
8635-B003-001DA	1973 Micropaleontology, Palynology, & Stratigraphy of: Huron P-96, Tors Cove D-52, Sable Island C-67, Wyandot E-53, Grand Falls H-09; Biostratigraphy Reports On: Oneida O-25, Micmac J-77, Naskapi N-30, Mohawk B-93, Onondaga E-84
8635-C002-001E	1969 Regional Geology Eastern Canada Offshore
8635-C004-001DA	1971 Regional Geological Interpretation, Misaine and Green Bank Areas
8635-C020-002DA 003DA	1974 Stratigraphy And Reservoir Analysis, Scotian Shelf
8635-M013-001E	1971 Regional Study of Atlantic Offshore Petroleum Potential
8636-G041-001E	1959 Geology of Maritimes Related to Petroleum Possibilities
8637-G011-001P	1972 Geodata Analysis, Maritimes and Adjacent Scotian Shelf Area, Grand Banks
8637-M006-001E	1975 Report on Potential Gas Reserves Cape Breton Area, North Sydney P-05
8637-W006-001E	1970 Regional Geology and Petroleum Prospects Maritime Region
8639-A004-001E	1966 Stratigraphic Studies, Nova Scotia and Magdalen Island Areas
8639-C020-001E	1972 Micropaleontology, Palynology and Stratigraphy of: Mississauga H-54, Oneida O-25, Sable Island C-67, Onondaga O-95, Onondaga E-84, Abenaki L-57, Micmac H-86, Micmac J-77, Wyandot E-53, Cree E-35, Mohawk B-93, Iroquois J-17, Huron P-96, Naskapi N-30
8639-H007-001E	1968 Maritimes Geological Field Party, Cape Breton and Magdalen Island
8639-M003-001E	1969 Geological Report Maritime Provinces, W. Newfoundland

RELEASED GEOLOGICAL AND RELATED DATA

PROGRAM #	DESCRIPTION
8639-M003-002E	1972 Soil Investigation West Sable Island, Sable Island
8639-S006-001E	1972 Geological Examination of Carboniferous Strata in Nova Scotia and New Brunswick
8639-S016-001E	1972 Geologic Evaluation of Chedabucto Bay
8645-M003-006E	1984 Venture Development Project Offshore Pipeline Geophysical Survey Offshore to Country Harbour Sheet Harbour Alternate Route
8646-D015-002E	1985 Sable Island Borehole Project Centre for Marine Geology, Dalhousie University and Atlantic Geoscience Centre
NS30-A077-001DA	2009 Report on the Wyandot Chalk Potential Offshore Sable Island EI 2418 Using Reprocessed Penobscot 3D Survey
NS33-T062-002P	2000 Nova Scotia Consortium Surface Geochemical Exploration Program Report

RELEASED PHYSICAL ENVIRONMENTAL DATA

PROGRAM #	DESCRIPTION
8640-H007-002E	1980 Current Meter Observations, East Point E-47, Beaton Point F-70
8640-J001-004E	1977 Ice and Oceanographic investigations of Davis Strait
8640-J001-011E	1978 Wave Climate Study of Southern Davis Strait
8640-M003-004P	1973 Design of A Hydrocarbon Baseline Study of the Scotian Shelf Banquereau Bank
8640-M003-006E	1977 Study of Oil Spill Movement in the Vicinity of Sable Island
8640-M003-029E	1980 Metocean Wave Chart Analysis, Grand Banks and Sable Island 1970-1979
8640-M003-117E	1985 Physical Environmental & Sea State Data Analysis Rowan Juneau May 19, 1984 - March 23, 1985 West Venture C-62
8640-M003-121E	1985 Current Meter Data Analysis Thebaud I-93
8640-M003-123E	1985 Environmental Data Analysis Current Measurements West Venture N-01
8640-S006-002P	1971 Nova Scotia Environmental Report - Laurentian Channel, Georges Bank, Banquereau Bank
8640-S006-003E	1973 New Seismic Equipment Test, Super-Long Air Gun (SLAG) Sydney Basin
8641-H005-001E	1983 Meteorological Data Analysis D240 Louisbourg J-47 Scotian Shelf
8641-H005-003E	1985 Current Meter Analysis D260 Citadel H-52, Scotian Shelf Final Report#1 Jan 14 - April 23, 1985
8641-H006-005E	1984 Environmental Data Analysis Report South Griffin J-13, Scotian Shelf
8641-H006-006E	1984 Environmental Data Analysis Report Chebucto K-90, Scotian Shelf
8641-H006-007E	1984 Meteorological Data Analysis Evangeline H-98, Scotian Shelf
8641-H006-020E	1984 Physical Environmental Data Report, Meteorology - Hesper P-52, Scotian Shelf
8641-H006-023E	1984 Physical Environmental Data Report, Oceanography - Hesper P-52, Scotian Shelf - Final Current Meter Report #1
8641-M003-001E	1982 Wind Comparison Study for Scotian Shelf and Slope
8641-M003-002E	1983 Oceanographic & Meteorological Design Parameters for Venture H-22 and West Olympia B-42 Sites
8641-M003-004E	1983 Meteorological Data Analysis-West Venture B-92 West Olympia B-42 Sites
8641-M003-005E	1984 Oceanographic & Meteorological Design Parameters for Venture H-22 and West Olympia B-42 Sites
8641-M003-006E	1982 Environmental Data Analysis Rowan Juneau Venture B-43 Report On Data Reduction and Processing From Rowan Juneau
8641-M003-014E	1982 Physical Fate of Drilling and Production Discharges in the Venture Field
8641-M003-015E	1982 Extreme Oceanographic Data for the Bluenose Drilling Site Northeast of Sable Island and Oceanographical Meteorological Design Parameters for Mariner, Arcadia, West Olympia and Venture Sites
8641-M003-022E	1982 Environmental Data Analysis Rowan Juneau South Venture O-59
8641-M003-023E	1983 Environmental Data Analysis Olympia A-12
8641-M003-031E	1983 Meteorological and Oceanographic Criteria Study
8641-M003-071E	1985 Mobil Venture Development Project Meteorological and Oceanographic Criteria Study, 1985 Extreme Bottom Current Data Along the Pipeline Corridor
8641-M003-100E	1985 Meteorological and Sea State Data Analysis - West Venture N-01

RELEASED PHYSICAL ENVIRONMENTAL DATA

PROGRAM #	DESCRIPTION
8641-M003-101E	1985 Meteorological & Sea State Data Analysis West Venture N-91
8641-M003-102E	1984 Current Meter Data Analysis West Venture B-92
8641-M003-103E	1985 Weather forecast Verification West Olympia O-51
8641-M003-104E	1985 Current Meter Data Analysis West Olympia O-51
8641-M003-120E	1984 Meteorological Data Analysis West Venture B-92 October 22 - December 12, 1984
8641-P028-011E	1983 Oil Slick Trajectory & Blowout Analysis for the Albatross G-02 Wellsite
8641-P028-033E	1983 Currents Near St. Paul P-91 Drilling Location
8641-P028-034E	1984 Current Data Report Near Bonnet P-23 Drilling Location
8641-P028-036E	1985 Weather and Sea State forecasting Final Summary Report - Albatross B-13, Environmental Data Analysis
8641-P028-038E	1985 Current Meter Data Report Albatross B-13
8641-P028-043E	1985 Environmental Data Analysis Shelburne G-29
8641-P028-054E	1985 Weather and Sea State forecasting Shelburne G-29
8642-C004-001E	1978 Oil Spill Scenario for the Chevron Acadia Prospect, Scotian Shelf March 1978
8642-M003-008E	1982 Chemistry and Toxicity of the Venture Field Condensates
8643-M003-002E	1982 Venture E.I.S. Aesthetic Environment Report
8644-M003-003E	1983 Venture Field Development Basis of Design
8645-M003-006E	1984 Venture Development Project offshore Pipeline Geophysical Survey offshore To Country Harbour Sheet Harbour Alternate Route
8646-D015-002E	1985 Sable Island Borehole Project, Centre for Marine Geology, Dalhousie University and Atlantic Geoscience Centre
NS41-B070-001E	2004 Environmental Assessment Report Exploratory Drilling On EI2407 By Bass Enterprises
NS41-C004-001DA	2001 Characterization of Benthic Habitat in the Mahone Block Exploration Licence 2359
NS41-C146-001DA	2002 Characterization of Benthic Habitat in the Mayflower Block Exploration Licence 2406
NS41-E040-001E	2001 - 2018 Sable offshore Energy Project offshore Environmental Effects Monitoring Program
NS41-E043-001DA	2002 Stonehouse Benthic Survey EI 2414
NS41-E043-001E	2002 Deep Water Oceanographic Program Stonehouse Block
NS41-E043-002E	2007 Benthic Study Deep Panuke
NS41-E043-003E	2010 Encana Deep Panuke offshore Gas Development Annual Physical Environmental Reports
NS41-J034-001P	2002 Deep Water Benthic Habitat Mapping Program for Four License Holders
NS41-K018-001DA	2001 Characterization of Benthic Habitat in Pinehurst & Pembroke Blocks Exploration Leases 2396 & 2386
NS41-M055-001DA	1983 Characterization of Benthic Habitat Cortland Empire Blocks
NS41-P092-001DA	2001 Benthic Habitat Characterization in the Exploration Licenses of Highland (EI2395), Barrington (EI2397), Torbrook (EI2384), Caledonia (EI2390), Weymouth (EI2380) & Plympton (EI2394)
NS41-S051-001DA	2002 Characterization of Benthic Habitat in Exploration Licenses 2381 & 2382

RELEASED WELLSITE SURVEY DATA

PROGRAM #	DESCRIPTION
NS26-C142-001P	2000 Scotian Shelf Multibeam Survey
NS26-C146-001E	2001 Scotian Shelf Geohazard Survey Proposed Marquis L-35 Drill Location
NS26-C146-003E	2003 Scotian Shelf Geohazard Survey Proposed Mariner I-85 Drill Site
NS26-C146-004E	2004 Scotian Shelf Geohazard Survey, Proposed Mariner-2 L-54 Drill Location
NS26-E040-001E	2002 Wellsite Survey Geohazards Survey Proposed Cree I-34 Drill Location
NS26-E040-002E	Geotechnical Data From the Proposed Location For the South Venture, Glenelg, Thebaud Compression Platforms and Associated Inter-Field Pipeline Routes.
NS26-E043-001E	2002 Deep Panuke Pipeline Route Geotechnical Survey
NS26-E043-002E	2002 Scotian Shelf Geohazard Surveys of Proposed Lower Musquodoboit Baddeck I-07 Cohasset Marcoh D-41 Margaree Site Margaree F-70 Grand Pre Dominion J-14 Drill Locations
NS26-L023-001E	1990 Wellsite Survey Lawrence and Balmoral Sites
NS26-M003-004E	1996 Pipeline Survey - Sable Offshore Energy Project Pipeline Route Country Harbour to Thebaud and Venture
NS26-M003-006E	1996 Sable Offshore Energy Project Geophysical Geotechnical Pipeline Route Survey Country Harbour to Thebaud and Venture
NS26-M003-007E	1997 Wellsite Survey North Triumph, Thebaud, Venture Sites Geotechnical Investigation - Thebaud, Venture Site A-97-09 Sandridge Site A-97-09 and West Venture Shallow Gas Survey
NS26-M003-009E	1999 Wellsite Survey Proposed Drill Location Emma N-03, Site A
NS26-M003-010E	2000 Wellsite Survey Proposed Glenelg H-59, Venture P-60, Adamant N-97 and Proposed Alma-Thebaud Pipeline Route
NS26-M055-001DA	2002 Characterization of Benthic Habitat In the Annapolis Block
NS26-P003-001E	1998 Wellsite Survey Grand Pre G-08
NS26-P003-002E	2000 Geophysical Geotechnical Wellsite Survey Sable Island Area Panuke F-09 Drill Location
NS26-P003-002E	2000 Geohazard Surveys Proposed Panuke M-79 Drill Location & 2000 Wellsite Survey Sable Island
NS26-P003-002E	2000 Wellsite Survey Sable Island Geohazard Surveys Proposed Queensland M-88 Drill Location
NS26-P003-003E	2001 Wellsite Survey Musquodoboit F-23, and Southampton West A-25 Drill Locations
NS26-P003-004E	2001 Jack-Up Rig Foundation Analysis Southampton A-25, Soil Investigation Site E
NS26-P003-005E	2001 Deep Panuke Pipeline Route Geotechnical Survey - Filed With NS26-E043-001E
NS26-P092-001E	2002 Deep Panuke Offshore Geotechnical Investigation
NS26NF-C004-001E	2001 Wellsite Geophysical Study Newburn H-23 / Mahone Prospects
NS26NF-E043-001E	2001 Weymouth Well Site Survey
NS26NF-E043-002E	2000 Wellsite Geophysical Study Torbrook C-15 Prospect
NS26NF-E043-003E	2001 Wellsite Geophysical Study Weymouth A-45 and O-44/P-44 Relief Locations
NS26NF-M055-001E	2000 Crimson Site Specific Short Offset 3D Geohazard Assessment
8626-B011-001E	1983 Wellsite Survey South Griffin J-13, Banquereau Bank
8626-B011-002E	1984 Wellsite Survey Hesper P-52, Banquereau Bank
8626-B011-003E	1984 Wellsite Survey, Griffin Prospect, East Banquereau Bank
8626-C004-001E	1978 Wellsite Survey Acadia K-62

RELEASED WELLSITE SURVEY DATA

PROGRAM #	DESCRIPTION
8626-C055-006E	1986 Wellsite Survey Whycomomagh N-90 Prospect, South West Sable Area
8626-H005-001E	1984 Wellsite Survey Citadel H-52, Banquereau Bank
8626-H006-001E	1983 Wellsite Survey Glooscap C-63, Western Bank, Scotian Shelf
8626-H006-002E	1983 Wellsite Survey Evangeline Prospect South Sable Area
8626-H006-003E	1983 Bathymetry Survey Report For Chebucto K-90, Sable Island Bank, Scotian Shelf
8626-H006-009E	1984 Seabed Investigation Survey For Beausejour Site, Sable Island Bank
8626-H006-010E	1985 Preliminary Seabed Investigation Survey For Chebucto Site West Chebucto K-20
8626-H007-001E	1980 Sparker Survey East Point E-47 and Beaton Point F-70 Drill Sites, Gulf of St. Lawrence
8626-H007-003E	1983 Wellsite Survey For East Sable O-47 Louisbourg J-47
8626-M003-003E	1980 Wellsite Survey of Venture D-42 and G-12 for Proposed West Venture E-62 Site Sable Bank Area
8626-M003-006E	1980 Wellsite Survey Bluenose G-47a
8626-M003-006E	1980 Wellsite Survey Migrant J-2
8626-M003-006E	1980 Wellsite Survey NW Venture, West Venture N-91
8626-M003-006E	1980 Wellsite Survey Thebaud K-93, Thebaud C-74, Thebaud P-84
8626-M003-012E	1982 Geological and Geophysical Wellsite Survey Mariner D-25, Sable Island Bank
8626-M003-013E	1982 Wellsite Survey Arcadia J-16, Sable Island Bank
8626-M003-016E	1982 Wellsite Survey West Olympia Prospect Sable Island Bank
8626-M003-023E	1984 Shallow Seismic Surveys For NW Venture N-91 and B-92, Northeast Sable Area
8626-M003-024E	1987 Wellsite Survey Adamant P-96, Sable Island Bank
8626-M003-024E	1987 Wellsite Survey South Sable B-44, Sable Island Bank
8626-M003-025E	1987 Wellsite Survey North Eagle B-54
8626-P028-006E	1981 Wellsite Survey Banquereau Area Sites A-D
8626-P028-007E	1982 Wellsite Survey West Esperanto B-78
8626-P028-008E SITE E	1985 Wellsite Survey South West Banquereau Site E
8626-P028-008E SITE F	1981 Wellsite Survey South West Banquereau Site F (North Banquereau I-13)
8626-P028-008E SITE G	1985 Wellsite Survey South West Banquereau Site G
8626-P028-008E SITE H	1981 Wellsite Survey South West Banquereau Site H
8626-P028-009E	1982 Wellsite Survey Cabot Strait
8626-P028-010E	1983 St. Paul Wellsite Survey
8626-P028-011E	1983 Wellsite Survey Albatross G-02 (B-13)
8626-P028-012E	1983 Wellsite Survey Bonnet P-23 (F-24)
8626-P028-013E	1983 Wellsite Survey Dover A-43 Scotian Shelf
8626-P028-016E	1984 Wellsite Survey Shelburne
8626-P028-023E	1985 Wellsite Survey Cohasset A-52 Sable Island Bank
8626-S006-001E	1980 Wellsite Survey South Acadia Block, Aspen and Alder Sites
8626-S006-003E	1981 Saog Wellsite Survey Scotian Slope
8626-S006-004E	1981 Shallow Gas Hazards Survey For Shawnee, Onondaga, & Cheyenne
8626-S006-005E	1982 Wellsite Survey East South Acadia Block Shubenacadie Site
8626-S006-006E	1983 Wellsite Survey South Debarres and Uniacke
8626-S006-007E	1983 Wellsite Survey Glenelg E-58, Alma F-67 Sable Island Bank

RELEASED WELLSITE SURVEY DATA

PROGRAM #	DESCRIPTION
8626-S006-008E	1983 Wellsite Survey For Desbarres and Kegeshook Sable Island Bank
8626-S006-009E	1984 Wellsite Survey For Como, Sable Island Bank
8626-S006-010E	1985 Wellsite Survey For Tantallon, Sable Island Bank
8626-S006-011E	1985 Wellsite Survey Peskowesk, Banquereau, Wallubek
8626-S006-012E	1984 Wellsite Survey Merigomish C-52, Alma K-85
8626-S006-013E	1985 Wellsite Survey Panuke Prospect
8626-S006-014E	1985 Wellsite Survey - Tobeatic, Banquereau Bank
8626-S006-015E	1985 Wellsite Survey North Triumph
8626-S006-016E	1985 Wellsite Survey Glenelg N-49 Prospect
8626-S006-017E	1988 Wellsite Survey Penobscot Prospect
8626-T007-001E	1982 Wellsite Survey For Alpha Site Gulf of St. Lawrence
OJ26-C047-001E	1983 Wellsite Survey Cable Head E-95

RELEASED GEOPHYSICAL DATA

PROGRAM	DESCRIPTION
8620-A004-005E	1971 Geophysical Survey Gulf of St. Lawrence
8620-B006-001E	1970 Combined Seagravity & Marine Magnetometer Survey Gulf of St. Lawrence North
8620-C004-002E	1971 Chevron Marine Vibroseis Exploration Scotian Shelf Offshore Misaine And Orpheus Banks Areas
8620-C004-004E	1971 Exploration Offshore Anticosti Island, Gulf of Saint Lawrence
8620-C004-005E	1972 Marine Vibroseis Survey Chevron Canada Misaine Bank Brown's Bank Area
8620-C015-001P 002P	1971 East Coast Marine Seismic Participation Survey, Labrador Shelf, Scotian Shelf
8620-C020-001E 002E	1971 Seismic, Gravity & Magnetic Survey, Scotian Shelf Area
8620-C039-001E	1974 Marine Geophysical Survey Chedabucto Bay
8620-G001-001E	1973 Marine Geophysical Survey West Newfoundland
8620-G005-001P	1971 Seismic Gravity & Magnetic Survey Offshore NFLD
8620-G005-004P	1972 East Coast Canada Offshore Ns And Offshore Newfoundland Areas
8620-G005-005P	1973 Seismic Reflection, Gravity and Magnetic Survey, Banquereau Banks, Scotian Shelf and Labrador Sea Areas
8620-GE07-001E	1984 - 1986 St. Pierre Survey by Geological Survey of Canada
8620-H006-001E 006E	1982 Seismic Reflection And Gravity Survey (Mohican Basin)
8620-H006-002E	1982 Seismic Program Scotian Shelf South Sable, Chebucto
8620-H006-003E	1982 Geophysical Survey Yarmouth Block
8620-H006-007E	1983 Seismic Gravity And Magnetic Survey South Sable
8620-H006-008E	1984 Beausejour & Gully Chebucto Geophysical, Gravity And Magnetics Survey
8620-H006-009E	1985 2D Reflection Marine Seismograph, Chebucto Sable Island Survey
8620-H007-001E	1967-1968 Magnetometer, Gravity Meter & Seismography Surveys
8620-H007-002E	1970 Gravity, Magnetometer and Seismograph Surveys Gulf of St Lawrence
8620-H007-004E	1971 Sea Magnetometer and Seismograph Surveys Gulf of St. Lawrence
8620-J001-001E	1972 Geophysical Surveys, Eastern Canada Offshore, Laurentian Cone and Orphan Areas (NFLD)
8620-J001-002E	1971 Geophysical Surveys North and South Labrador, Laurentian Fan, Orphan Block
8620-J001-005E	1974/1975 Geophysical Surveys
8620-J008-001E 002E	1983 ICG Resources Limited Marine Seismic Survey, East Sable
8620-J008-007E	1982 Seismic Gravity and Magnetic Surveys Banquereau Area
8620-M003-001E	1960 Reflection and Refraction Seismograph Survey, Sable Island
8620-M003-002E	1963 Reflection and Refraction Seismograph Survey Report, Sixth Year Report
8620-M003-003E	1966 Reflection and Magnetic Survey, Third Year Report Banquereau Area
8620-M003-005E 006E	1967 Geophysical Operating Season Grand Banks, Sable, Banquereau and Truxton
8620-M003-007E 008E	1968 Operational Season on Grand Banks, Sable Island, South Sable, Banquereau Bank, Truxton and Fundy Areas
8620-M003-009E 010E	1969 Operational Season Sable Island, Banquereau, Truxton
8620-M003-012E 013E	1972 Grand Banks & Scotian Shelf High Resolution Geophysical Survey & Sampling Project, Adventure, Bluenose & Hibernia Areas
8620-M003-014E	1973 High Resolution Geophysical and Sampling Project, Gaultois and Adventure Drilling Locations
8620-M003-015E	1973 Seismic & Gravity Survey, Sable Island Area
8620-M003-016E	1973 Geophysical Survey, Sable Island Area

RELEASED GEOPHYSICAL DATA

PROGRAM	DESCRIPTION
8620-M003-022E	1974 Geophysical Survey in Citnalta, Intrepid and Venture Areas
8620-M003-023E	1974 Geophysical Survey on South Sable Area
8620-M003-024E	1974 Geophysical Survey Banquereau Bank Area Seismic and Gravity Interpretation
8620-M006-001E	1970 Reflection Seismic Survey of Part of Cabot Strait Offshore Cape Breton Island
8620-M006-002E	1972 Marine Reflection Seismograph Survey Part of Cabot Strait - Phase Three
8620-M006-003E	1974 Experimental Reflection Seismic Survey Offshore Cape Breton Island
8620-N011-001E	1985 Deep Seismic and Magnetic Survey Scotian Shelf, Sable Island
8620-S006-001E	1964 Geophysical Progress Report, East Coast Offshore Operations
8620-S006-002E	1972 Geophysical Survey on Scotian Slope, South West Sable Island, Eagle, Primrose
8620-S009-001E	1970 Combined Sea Gravity and Magnetometer Survey Gulf of St. Lawrence
8620-S014-001E	1974 Geophysical Survey East Anticosti Island
8620-S014-002E	1974 Geophysical Reflection Mecatina and Banc-Beauge Regions of The Gulf of St Lawrence
8620-S014-004E	1975 Multi-Program Project Beaton Point, Northumberland, Miramichi, Georges Bay & Onshore PEI Areas Gulf of St. Lawrence
8620-S014-006E	1983 Marine Reflection Seismic Survey over Scotian Shelf Area - West Slope Area, West Banquereau, East Banquereau, Sable, and Scotia Basin
8620-S014-010E	1983 Marine Reflection Seismic Survey over The Scotian Shelf Area - West Slope Area, West Banquereau, Sable and Scotia Basin
8620-S024-001P	1972 East Coast Marine Participation Survey Offshore Nova Scotia and Newfoundland
8620-T007-001E	1968 Marine Gravity Meter and Magnetometer Survey
8620-T007-005E	1971 Marine Vibroseis Survey Cabot Strait
8620-T007-007E	1973 Geophysical Survey Cabot Strait, Scotian Shelf
8621-C004-001E	1967 Airborne Magnetometer Survey Chevron Canada Misaine Bank and Orpheus Areas
8621-C055-002E	1982 Airborne Magnetometer Study in The Scotian Shelf Sable Island Area
8621-G014-001E	1965 Aeromagnetic and Seismic Survey, Offshore Nova Scotia (South Coast)
8621-M003-001E	1959 Summary of Reconnaissance Survey and Aeromagnetic Survey Sable Island Area
8621-S014-001E	1974 Aeromagnetic Survey Gulf of St. Lawrence Survey
8623-S009-001E	1973 Gravity Survey of the Offshore Yarmouth Area
8624-A004-004E	1968 2D Geophysical Seismograph Reflection Survey Gulf of St. Lawrence & Cabot Strait
8624-A004-013E 014E	1972 Seismic Survey, Trade, Participation on The Scotian Shelf
8624-A004-015E	1974 Geophysical Activity, Ranger West Acreage, Scotian Shelf
8624-A004-018E	1974 Seismic and Gravity Survey Scotian Shelf, Joe Phillips Acreage
8624-A024-001E	1976 2D Reflection Seismic Survey, West Sable Island Area
8624-B004-001E	1969 2D Gulf of St. Lawrence Survey Seismic Reflection Survey
8624-B011-003E	1982 2D Deep Reflection Seismic Program North Abenaki
8624-B011-004E	1983 2D Deep Reflection Seismic Program Sable Regional Seismic Survey
8624-B011-005E	1983 2D Deep Reflection Seismic Program, East Banquereau Block
8624-B011-006E	1983 2D Deep Reflection Seismic Program, North Abenaki
8624-B011-007E	1984 2D Deep Reflection Seismic Program East Banquereau Block South Sable lii
8624-B011-008E	1984 2D Deep Reflection Seismic Program Over East Banquereau Block
8624-C004-001E	1969 2D Marine Seismograph Survey of The Blanc A, Green Bank Area
8624-C004-007E	1980 2D Geophysical Survey North Shore PEI, Gulf of St. Lawrence

RELEASED GEOPHYSICAL DATA

PROGRAM	DESCRIPTION
8624-C004-009E	1981 2D Geophysical Survey Northumberland Strait Offshore Cape Breton
8624-C004-010E	1981 2D Gulf of St. Lawrence Geophysical Survey
8624-C004-013E	1982 2D Geophysical Survey, Gulf of St. Lawrence Northumberland Strait Cablehead
8624-C004-014E	1982 2D Geophysical Survey Northumberland Strait, Stanhope, Cape Tormentine and St. Georges Bay Areas
8624-C012-001E	1971 2D Marine Seismic Reflection Survey Belle Island and Anticosti Island Areas of The Gulf of St. Lawrence
8624-C012-002E	1971 2D Marine Seismic Reflection Survey, South Coast, Nova Scotia
8624-C015-001P	1969 2D Gulf of St. Lawrence Marine Seismic Participation Survey
8624-C015-002P	1970 2D East Coast Marine Seismic Participation Survey Scotian Shelf Grand Banks Gulf of St. Lawrence Northumberland Strait Cabot Strait
8624-C015-003P	1970 2D East Coast Marine Seismic Participation Survey Scotian Shelf Grand Banks Gulf of St. Lawrence Northumberland Strait Cabot Strait
8624-C020-001E	1972 2D Seismic Reflection Survey Scotian Shelf
8624-C022-001E	1971 2D Seismic Reflection Survey Gulf of St. Lawrence Survey
8624-C033-001E 002E	1973 Marine Reflection Seismic Survey, Mohican and Primrose Prospects
8624-C034-001E	1969 Marine Vibroseis Survey Browns Bank Area
8624-C055-003E	1982 Regional Seismic Reflection and Shipborne Gravity Survey
8624-C055-004E	1983 Seismic Reflection Survey Yarmouth Block
8624-C055-007E	1985 Seismic Reflection Survey Whycomomagh Block (EA270)
8624-D001-001P 002P	1970 Seismic Survey, Canadian East Coast Offshore Canada Scotian Shelf and Grand Banks
8624-D001-003P	1971 Seismic Survey Scotian Shelf and Grand Banks Offshore Canada
8624-D001-004P	1972 East Coast Seismic Participation Survey Scotian Shelf and Grand Banks
8624-D003-002E	1982 2d Seismic Survey East Sable Area
8624-D004-001P	1967 Regional Marine Vibroseis Survey Gulf of St. Lawrence & North Atlantic
8624-D009-002E	1982 Geophysical Surveys East Sable Area, Scotian Shelf Marine Gravity and Magnetic Survey
8624-G005-006P	1982 GSI Regional Speaculative Survey Gulf of St. Lawrence Scotian Shelf
8624-G005-007P	1984 GSI Speculative Regional Seismic Survey Sable Island
8624-G005-008P	1984 3D Onondaga Reconnaissance Survey
8624-G005-010P	1983 GSI Experimental Survey Gulf of St Lawrence
8624-G022-001E 002E	1983 Reflection Seismic Survey
8624-H005-001E	1983 Seismic Survey and Interpretation Report Nova Scotia Shelf East Sable Area
8624-H005-002E	1984 Seismic Survey, East Sable Area, Louisbourg
8624-H006-004E	1983 Geophysical Survey Chebucto Block (EA781-004), Scotian Shelf
8624-H006-005E	1983 Geophysical Survey, South Sable (EA146), Scotian Shelf
8624-H006-007E	1984 Seismic Program South Sable
8624-H006-008E	1984 Seismic Program, Gully Block
8624-H006-010E	1985 3d Reflection Marine Seismograph South Sable Survey Chebucto Area
8624-H007-003E	1971 Marine Vibroseis Survey Gulf of St. Lawrence & Marine Vibroseis Survey, PEI
8624-H007-004E	1972 Marine Vibroseis Survey Gulf of St. Lawrence & Marine Vibroseis Survey, PEI
8624-H007-006E	1973 Marine Seismograph Survey Offshore PEI

RELEASED GEOPHYSICAL DATA

PROGRAM	DESCRIPTION
8624-H007-010E	1981 Marine Seismic Survey East Sable Prospect
8624-L023-001E	1989 2D Seismic Survey East Cohasset, Scotian Shelf
8624-M003-002E 003E	1970 Geophysical Survey Grand Bank, Banquereau Bank, Sable Island
8624-M003-004E	1971 Geophysical Survey Sable, South Sable Island and Banquereau Areas
8624-M003-007E	1971 Geophysical Survey Port Au Port Area, St. George's Bay, Southwest Newfoundland
8624-M003-010E	1972 Geophysical Survey, Sable Island Area
8624-M003-011E	1972 Geophysical Survey, South Sable Island
8624-M003-012E	1972 2D Geophysical Survey, Banquereau Bank
8624-M003-014E 018E	1973 Geophysical Survey South Sable Island Area
8624-M003-016E	1973 Combined Geophysical Survey Sable Island Area
8624-M003-017E	1973 Geophysical Survey Gulf of St. Lawrence - Port Au Port Area
8624-M003-019E	1973 West Sable Seismic Program
8624-M003-020E	1973 Geophysical Survey West Sable, Cree E-35 & Demascota G-32 Areas, Scotian Shelf
8624-M003-021E	1973 Geophysical Survey Banquereau Bank Area , Scotian Shelf
8624-M003-022E	1973 Geophysical Survey Sable Island
8624-M003-023E	1973 Geophysical Survey, Banquereau Bank Scotian Shelf
8624-M003-024E	1975 Geophysical Survey, Banquereau Bank Scotian Shelf
8624-M003-025E	1975 Geophysical Marine Seismic Survey Sable Island Area
8624-M003-026E	1975 Geophysical Survey Flemish Pass, Grand Banks
8624-M003-027E	1975 Geophysical Survey Tooker Bank Area Filed Under 8624-M003-025e
8624-M003-028E	1975 Geophysical Survey Labrador Sea Area Filed With 8624-M003-025e
8624-M003-030E	1977 Marine Reflection Seismic Survey Sable Island Area
8624-M003-033E	1979 Marine Seismic Survey Sable Island Area
8624-M003-035E	1980 Marine Geophysical Survey Sable Island Area
8624-M003-041E	1981 Marine Seismic Survey East Banquereau Area Mobil Oil Canada
8624-M003-044E	1982 2D Marine Seismic Survey, Sable Island Area
8624-M003-045E	1982 Broadside and Experimental Seismic Survey Sable Island
8624-M003-047E	1983 2D Marine Seismic Survey East Sable Island Area
8624-M003-049E	1984 Marine Seismic Survey, Sable Island Area
8624-M006-001E	1971 Reflection Seismic Survey, Cabot Strait, Offshore Cape Breton Island
8624-M006-002E	1975 Experimental Reflection Seismic Survey Offshore Cape Breton Island
8624-N005-001E	1982 Marine Seismic Survey North Sable Island Area (Annapolis Survey)
8624-N005-002E	1983 Marine Seismic Survey Part 1
8624-O011-001E	1981 2D Seismic Program Scotian Shelf
8624-P028-001E	1977 Marine Geophysical Survey - Western Shelf, Albatross
8624-P028-002E	1978 Marine Geophysical Survey Shelburne Prospect
8624-P028-015E	1981 Marine Reflection Seismic, Gravity and Magnetic Survey - Banquereau Area
8624-P028-025E	1981 Marine Reflection Seismic, Gravity and Magnetic Survey - Cabot Strait
8624-P028-028E	1981 Marine Reflection Seismic, Gravity and Magnetic Survey - Banquereau Area
8624-P028-029E	1982 Marine Reflection Seismic, Gravity and Magnetic Survey - Albatross
8624-P028-030E	1981 Marine Reflection Seismic, Gravity and Magnetic Survey - Orpheus Area

RELEASED GEOPHYSICAL DATA

PROGRAM	DESCRIPTION
8624-P028-034E 051E	1982 Marine Reflection Seismic, Gravity and Magnetic Survey - Mohawk and Acadia Areas
8624-P028-035E	1982 Marine Reflection Seismic, Gravity and Magnetic Survey Cabot Strait
8624-P028-036E	1982 Marine Reflection Seismic, Gravity and Magnetic Survey - Banquereau
8624-P028-046E	1982 Marine Reflection Seismic, Gravity and Magnetic Survey - East Banquereau
8624-P028-049E	1982 Marine Reflection Seismic, Gravity and Magnetic Survey - Mohican Basin
8624-P028-050E	1982 Marine Reflection Seismic, Gravity and Magnetic Survey - Albatross
8624-P028-054E 055E	1982 Experimental Marine Seismic Survey - Banquereau & Orphan East
8624-P028-056E	1983 2D Marine Reflection Seismic, Gravity and Magnetic Survey, St. Paul, Cabot Strait, Nova Scotia and Newfoundland
8624-P028-057E	1983 Marine Reflection Seismic, Gravity and Magnetic Survey - Sydney Basin
8624-P028-060E	1983 Marine Reflection Seismic, Gravity and Magnetic Survey - Bonnet Prospect
8624-P028-068E	1983 Marine Reflection Seismic, Gravity and Magnetic Survey - Orpheus Area
8624-P028-069E	1984 Marine Reflection Seismic, Gravity and Magnetic Survey - Western Scotian Shelf
8624-P028-071E	1985 Air-Gun Reflection Seismic, Gravity and Magnetic Survey - Scotian Shelf Mohican Basin Area
8624-P028-072E	1985 Marine Reflection Seismic, Gravity and Magnetic Survey - Regional Offshore Nova Scotia
8624-P028-073E	1985 Marine Reflection Seismic, Gravity and Magnetic Survey - North Sable Area
8624-P028-084E	1986 3D Seismic Survey Cohasset West Sable Island Area Petro-Canada in c. with Nova Scotia Resources
8624-S001-001E	1964 Marine Seismic Survey Burgeo Banks Siebens Oil
8624-S006-001E	1964 Regional Seismic Survey, Scotian Shelf Reports Covering 1964-1966
8624-S006-003E	1968-1969 Geophysical Survey East Coast Offshore Nova Scotia
8624-S006-004E	1968-1969 Geophysical Survey, Offshore Nova Scotia
8624-S006-005E 006E	1970 Geophysical Survey, Scotian Shelf - Wyandot, Ojibwa, Abenaki, Iroquois, Huron, Cree and Argo Areas
8624-S006-008E	1971 Geophysical Survey, Scotian Shelf Chippewa, Huron, Mohican and Sauk Areas
8624-S006-009E	1972 Geophysical Survey on Scotian Slope, South West Sable Island, Eagle & Primrose
8624-S006-011E	1973 Geophysical Survey, Gulf of St. Lawrence
8624-S006-012E	1973 Geophysical Survey, Onondaga, Oneida, Wenonah, Hawkeye, Dolphin & Carbonate Edge
8624-S006-013E	1973 2D Seismic Survey Gulf of St. Lawrence
8624-S006-015E	1973 Seismic Survey Off Western Newfoundland
8624-S006-018E	1975 Marine Seismic Survey, Scotian Block East Coast Offshore
8624-S006-020E	1976 Seismic Survey, East Coast Offshore, Slope 32, Moheida, South Sable, Wenonah, Onondaga & Albatross
8624-S006-022E	1976 Geophysical Survey East Coast Offshore, Scotian Shelf Penobscot and Western Shelf
8624-S006-023E	1980 Reflection Seismic Survey - North and South Sable Area Offshore NS
8624-S006-025E 026E	1980 Reflection Seismic Survey - Western Slope and South Acadia Areas
8624-S006-027E	1981 Reflection Seismic Program in South Sable Area, Offshore Nova Scotia
8624-S006-028E 031E	1981 Reflection Seismic Survey - South Acadia, Panasonic, East Panasonic and Python

RELEASED GEOPHYSICAL DATA

PROGRAM	DESCRIPTION
8624-S006-032E	1982 Reflection Seismic Program - Browns Bank, Medway, South Acadia, Mira Bay, Glace Bay, Tor Bay and Python areas on the Slope
8624-S006-033E	1982 2D Reflection Seismic Survey North and South Sable Areas
8624-S006-035E	1983 Reflection Seismic Survey - Panasonic, Glace Bay and East Panasonic Areas
8624-S006-036E	1983 Reflection Seismic Survey in Browns Bank, South Acadia and Mira Bay Areas
8624-S006-037E	1983 2D Reflection Seismic Survey in Hawkeye, Mulgrave, Lunenburg, Glenelg and Triumph Areas
8624-S006-038E	1983 Reflection Seismic Survey in Banquereau, Python and Acadia Areas
8624-S006-041E	1984-1986 3D Seismic Survey, Nova Scotia Shelf Glenelg Area
8624-S006-042E	1984 Reflection Seismic Survey, Nova Scotia Offshore Slope, Panasonic and Browns Bank Areas
8624-S006-043E	1984 Seismic Survey Nova Scotia Shelf, North and South Sable Areas
8624-S006-045E	1984 Reflection Seismic Program Banquereau
8624-S006-046E	1985 Seismic Reflection Survey Como Panuke Areas
8624-S006-047E	1985 2D Seismic Acquisition, Nova Scotia Slope
8624-S006-048E	1985 2D Seismic Acquisition, Nova Scotia Shelf
8624-S006-050E	1987 2D Seismic Acquisition, Nova Scotia Shelf
8624-S009-001E	1974 West Yarmouth Marine Seismic Survey - Yarmouth Block
8624-S014-001E	1971 Marine Vibroseis Survey Gulf of St. Lawrence Area
8624-S014-002E	1970-1971 Marine Vibroseis Survey in Estuary, Gulf of St. Lawrence and Bay of Chaleur
8624-S014-003E	1972 Marine Vibroseis Survey Bradelle Project Soquip Gulf of St. Lawrence Gaspe Peninsula
8624-S014-004E	1971 Soquip Magdalen Islands Vaporshock Seismic Program
8624-S014-005E	1974 Geophysical Survey Magdalen, Block B
8624-S014-008E	1980-81 Seismic Survey Gulf of St. Lawrence
8624-S014-009E	1981 Reflection Seismic Survey, Gulf of St. Lawrence
8624-S014-010E	1981 Gulf of St. Lawrence Seismic Survey - Magdalen Island
8624-S014-011E	1981 Marine Seismic Survey Banc Beauge & Mecatina Prospect
8624-S014-012E	1982 Seismic Survey, Gulf of St. Lawrence
8624-S014-013E	1982 Seismic Survey, Gulf of St. Lawrence
8624-T007-002E	1965 Marine Digital Seismic Reconnaissance Survey Gulf of St. Lawrence
8624-T007-003E	1969 Marine Vibroseis Survey, Gulf of St. Lawrence
8624-T007-004E	1969 Marine Vibroseis Survey Cabot Strait, Laurentian Channel
8624-T007-006E	1970 2D Marine Vibroseis Survey Cabot Strait Laurentian Channel
8624-T007-007E	1970 2D Marine Vibroseis Survey Gulf of St. Lawrence
8624-T007-011E	1974 2D Marine Seismic Program - Cabot Strait
8624-T013-001E	1970 Marine Vibroseis Survey La Have Basin and Gulf of Maine
8624-T021-004E	1978 2D Marine Seismic Survey Shelburne Prospect West Albatross
8624-T021-006E	1980 Seismic Survey West Albatross, Western Scotian Shelf
8624-T021-008E	1981 Seismic Survey 1981- Albatross
8624-V001-001E	1970 Marine Seismic Survey Gulf of St. Lawrence, Straits of Belle Isle, Western NFLD
8624-W013-001P	1983 Marine Seismic Survey, Reflection, Gravity, Magnetics Speculative Survey East Coast Canada

RELEASED GEOPHYSICAL DATA

PROGRAM	DESCRIPTION
8624-W013-002P	1984 Sable Island Spec Survey Maritime Offshore West Phase II - Scotian Shelf
8624-W013-005P	1985 Western Geco Speculative Survey, Scotian Shelf, Phase IV
8625-M003-001E	1971 Marine and Land Refraction Survey Sable Island Area
8625-S006-001E	1973 Experimental Reflection/Sonobuoy Program Sable Area
8625-S006-002E	1973 Refraction Survey - Primrose F-41
8627-A004-016DA	1976 Geophysical Interpretation Report of Gulf of St. Lawrence
8627-A014-002P	1974 Gulf of St. Lawrence & Orpheus Anomaly Gravity and Magnetic Survey
8627-C004-002DA	1970 Summary of Exploration Misaine and Orpheus Banks
8627-C004-003DA	1970 Summary of Exploration, Anticosti Island Marine Seismic
8627-C004-008DA	1970 Chevron Survey and Interpretation of Catalina Line S 8624-C015-004p Offshore Anticosti Island
8627-C022-002DA	1974 Geophysical & Geological Setting of Permits; Gulf of St. Lawrence & Orpheus Anomaly East Coast Offshore
8627-D003-001E	1983 Seismic Northumberland Area Reprocessing Project on Exploration Agreement No. 149
8627-G001-001DA	1971 Marine Reflection Seismic East Coast Participation Survey Scotian Shelf, Avalon and Gulf of St Lawrence
8627-G001-002DA	1977 Reprocessing Reinterpretation of Catalina Survey 8624-C015-001p
8627-H007-001DA	1974 Geological and Geophysical Interpretation of Gulf of St. Lawrence and Orpheus Anomaly Area, East Coast Offshore
8627-H007-002E	1974 Reprocessing and Interpretation of A Geophysical Surveys Gulf of St. Lawrence
8627-J001-002E	1976 Reprocessing of Geophysical Data 1976-77 Newfoundland Orphan Knoll
8627-M003-001DA	1970 Geophysical Interpretation of Catalina Data Gulf of St. Lawrence, Grand Banks
8627-M003-002DA	1971 Geophysical Interpretation Report of Catalina Lines O-M-K-R-J-F and G
8627-M006-001DA	1970 Analysis of Gulf of St. Lawrence Vibroseis Survey
8627-M006-003DT	1971 Gravity and Magnetic Results (Data Trade) Offshore Cape Breton Island
8627-M006-004DA	1972 Interpretation of Seismic Data From The Orpheus Basin
8627-M006-005E 005DT	1973 Interpretation of Seismic Data From The Orpheus Basin
8627-M006-006E	1975 Experimental Data Processing Cabot Strait Offshore Cape Breton Island
8627-P011-002DA	1972 Marine Reflection Survey Scotian Shelf
8627-P028-001DA	1979 Interpretation & Data Purchase of Ecco Group Lines - Western Shelf and Acadia Areas
8627-S003-001DA 002DA	1971 Seismic Interpretation of Permits W4781 W4782 W4784 W4785 W4786 W4787 Offshore Nova Scotia
8627-S006-004DA	1972 Reinterpretation of Purchased Digicon Lines
8627-S006-014DA	1973 Geophysical Progress Report, East Coast Offshore Nova Scotia 1973 Sydney Basin
8627-S006-016E	1974 Geophysical Survey - Scotian Shelf and Gander Block
8627-S006-018E	1975 Geophysical Survey Offshore Nova Scotia Moheida Penobscott
8627-S006-021E	1977 Geophysical Progress Report Seismic Processing, Albatross Project
8627-S008-001DA	1970 Marine Seismic Participation Survey Gulf of St. Lawrence, Grand Banks
8627-S009-001E	Gulf of St. Lawrence Survey
8627-T007-002DA	Structural Interpretation of Initial Four Marine Seismic Lines - Scotian Shelf
8627-T007-004DA	Purchased Data To Tie Mic Mac and Grand Falls Wells
8627-T007-011DA	Project Report on Seismic Purchase From Digicon Exploration Ltd

RELEASED GEOPHYSICAL DATA

PROGRAM	DESCRIPTION
8627-T021-001DA	1977 West Albatross Scotian Shelf Marine Seismic Survey
8627-T036-001P	Scotian Shelf Study Geological Geophysical Study of 60 Wells
8627-U003-001E	1974 Data Purchase and Interpretation, Scotian Shelf
8645-M003-006E	1984 Venture Development Project Offshore Pipeline Geophysical Survey Offshore To Country Harbour Sheet Harbour Alternate Route
8646-D015-002E	1985 Sable Island Borehole Project, Centre For Marine Geology, Dalhousie University and Atlantic Geoscience Centre
NS21-G006-001P	1999 High Resolution Aeromagnetic Survey Over The Sable Sub-Basin and Over The Laurentian Basin Offshore Nova Scotia
NS24-B071-001E	2014 3D BP Tangier Project Wide Azimuth Towed Streamer (Wats) Seismic Survey
NS24-C149-001E	2004 2D Seismic Survey Laurentian Channel
NS24-E040-001E	2001 3D Marine Seismic Reflection Survey For Cree, Glenelg, and Eagle/Chebucto
NS24-E043-001E	2002 3D Marine Seismic Survey Abenaki Scotian Shelf
NS24-E043-002E	2003 3D Seismic Survey Stonehouse Prospect
NS24-G001-001E	1998 2d Marine Seismic Survey St. Pierre Et Miquelon
NS24-G001-002E	2001 East Laurentian 2d Airgun Reflection Seismic Survey
NS24-G005-001P	1998-1999 2d Non-Exclusive Seismic Survey Barrington Sable Island South
NS24-G005-002P	1999 2D Non-Exclusive Seismic Survey Barrington Banquereau Demascota
NS24-G005-003P	2000 2D Laurentian Channel Non-Exclusive Seismic Program
NS24-G005-004P	2001 2D Seismic Survey Sable Bank and South Wales
NS24-G005-008P	2003 2D Portion of Marine Seismic Survey, Mamou Area Offshore Nova Scotia
NS24-G005-008P	2003 3D Portion of Marine Seismic Survey, Mamou Area Offshore Nova Scotia
NS24-G026-001E	1998 2D Marine Seismic Survey Scotian Shelf South of Sable
NS24-G026-001P	1998 2D TGS-Nopec Ns-100 98 Deep Water Seismic Survey Scotian Shelf
NS24-G065-001P	1999 Geco-Prakla 2D Deep Water Nova Scotia Seismic Survey
NS24-G075-003P	2003 2D Ultra Deep Seismic GX Technology Non Exclusive Participation Survey
NS24-H006-001E	2010 Sydney Basin El 1115 2D Seismic Survey
NS24-J014-001P	1998 2D Seismic Survey Scotian Shelf East
NS24-L023-002E	1990 3D Panuke Seismic Survey Scotian Shelf
NS24-L023-003E	1990 2D East Cohasset Prospect Sable Island Area Reflection Seismic Survey
NS24-L023-004E	1991 3D Musquodoboit Seismic Survey
NS24-L023-004E	1991 2D South Panuke Seismic Survey
NS24-M003-001E	1990 2D Marine Seismic Sable Island Area
NS24-M003-002E	1991 2D Marine Seismic Survey Sable Island Area
NS24-M003-003E	1996 3D Thebaud & Venture Sable Area Ocean Bottom Cable Reflection Seismic Survey
NS24-M003-004E	1996 2D Ocean Bottom Cable Seismic Program
NS24-M003-006E	1997 3D Marine Seismic Survey El2356 Alma, North Triumph and El2357 Grand Pre
NS24-M003-007E	1998 3D Marine Seismic Survey Sable Island; Marmora, and Arcadia
NS24-M003-009E	1999 3D Sable Area Ocean Bottom Cable (Obc) Seismic Survey
NS24-M003-010E	1999 3D Marine Seismic Survey in trepid Area, Cree Area
NS24-M055-001E	2003 3D Project Cortland Empire Nova Scotia
NS24-N011-001E	1991 3D Penobscot Seismic Survey North of Sable Island

RELEASED GEOPHYSICAL DATA

PROGRAM	DESCRIPTION
NS24-P003-002E HUCKLEBERRY 3D	2000 3D Marine Seismic Survey Huckleberry
NS24-P003-002E TORBROOK 3D	2000 3D Marine Seismic Survey Torbrook
NS24-P003-003E	2000 2D Marine Survey The Dales Scotian Shelf
NS24-P003-004E	2001 3D Acquisition and 3D Seismic Survey Barrington Prospect
NS24-S006-001E 002E	2000 - 2001 3D Seismic Survey Offshore Nova Scotia Shelburne Prospect
NS24-S006-003E	2013 3D WAZ Seismic Program Shelburne Basin
NS24-T063-002P	2002 TGS-Nopec 2D Offshore Eastern Canada Regional Seismic Program
NS24-T063-004P	2003 TGS-Nopec 2D Survey- Western Scotian Slope (Ns-109)
NS24-V003-001P	1998 2D Veritas Regional Marine Seismic Survey Offshore Eastern Canada
NS24-W013-001P	1998 Eastern Canada 2D Speculative Program
NS24-W013-002P 003P	1999 3D Seismic Survey Scotian Slope, Scotian Shelf Shelburne Prospect
NS24-W030-001P	2001 2D Multi-Client Survey 329158: Sable Island East Coast Canada
NS27-B070-001DA	2008 2D & 3D Seismic Reprocessing For EL2407
NS27-B070-002DA	2008 Reprocessing Reinterpretation of 2D & 3D Seismic EL2407 Ma Cherie
NS27-D031-001DA	Evaluation of EL2388, Scotian Basin, Offshore Nova Scotia, Canada
NS27-M055-001DA	2003 3D Seismic Reprocessing Report EL2377 Annapolis Block
NS27-N054-001DA	2007 Reprocessing and Interpretation of NS24-E043-002E EL2404 Craigmore & Stonehouse Blocks
NS27-S092-001E	Growth Fault History and Structural Inversion in the Penobscot Area, Western Abenaki Subbasin, Offshore Nova Scotia
OJ20-C004-001E	1982 Chevron Marine Seismic Gravity and Magnetometer Survey

RELEASED SAMPLE REPORTS

SR#	REPORT DESCRIPTION
SR1979-01E	Palynological Zonation and Correlation of Sixty-seven Wells, Eastern Canada (including Argo F-38, Bluenose G-47, Cohasset D-42, Cree E-35, Dauntless D-35, Esperanto K-78, Eurydice P-36, Fox I-22, Hercules G- 15, Iroquois J-17, MicMac J-77, Missisauga H-54, Mohawk B-93, Mohican I-100, Naskapi N-30, Ojibwa E-07, Oneida O-25, Primrose A-41, Primrose 1a A-41, Sable Island C-67, Sauk A-57, Triumph P-50, Wyandot E-53)
SR1983-01E	Geotechnical Analyses of Core Samples From Davis Strait (Cape Spencer #1, Chinampas N-37)
SR1985-01E	Report of Analytical Work Potassium-Argon Age Determination, Ojibwa E-07
SR1986-01E	Matrix Density Study, South Venture O-59 USING VENTURE B-13 SAMPLES
SR1987-01E	Venture Field Porosity and Permeability Measurements (Venture B-73, Venture B-52, Venture B-53)
SR1988-02E	Biostratigraphic (Palynological) Studies of the West Chebucto K-20 Well
SR1988-03E	Vitrinite Reflectance Data on Boreholes Cape Spencer #1 and Chinampas N-37
SR1989-01E	Cretaceous Organic Facies and Oil Occurrence Scotian Shelf
SR1990-03E	Characterization and Maturation of Selected Oil and Condensate Samples and Correlation
SR1990-05E	Evaluation of Organic Facies of Verrill Canyon Formation Sable Subbasin, Scotian Shelf
SR1991-02E	Characterization and Maturation of Selected Cretaceous and Jurassic Source Rocks and Crude
SR1993-04E	Oil Correlation Summary with Appendix B-Ion Chromatograms for Representative Oils from
SR1993-05E	Analyses and Interpretation of Geochemical and Source Rock Data from Scotian Shelf Wells.
SR1994-04E	Organic Petrography and Kinetics of Limestone and Shale Source Rocks in Wells Adjacent to Sable Island, Nova Scotia and the Interpretation on Oil-Oil or Oil-Source Rock Correlation and Basin Modeling (50 wells)
SR1995-01E	West Sable Exploration License Reservoir Quality Study Offshore Nova Scotia. (Thebaud C-74,
SR1996-02E	Palynological Correlation of South Venture O-59 and Venture B-52 Wells
SR1997-03E	Palynological Study of Selected Samples from 6 Wells in the Scotian Shelf Area (Evangeline H-98, Glenelg E-58, Tantallon M-41, Alma F-67, Chebucto K-90, and West Chebucto K-20)
SR1998-04E	Hydrocarbon Potential and Oil Stain-Source Rock Correlation of Sediments from the Brion Island No. 1, Gulf of St. Lawrence
SR1999-01E	Organic Carbon and Rock-Eval Pyrolysis Data (Alma F-67, Evangeline H- 98, Shubenacadie H-
SR1999-02P	Eastern Canada Margin Oil Study (Alma K-85, Alma F-67, Glenelg E-58, Glenelg J-48, Glenelg J-49, Chebucto K-90, N. Triumph G-43, Panuke PP1, Panuke B-90, in trepid L-80, Cohasset CP6B, Cohasset CP3A, Cohasset CP9, Cohasset CP4, Cohasset CP6, Cohasset D-42, Cohasset A-52, Balmoral M-32, Thebaud I-93 Thebaud C-74, South Sable B-44, Thebaud I-94, Thebaud P-84, Cohasset L-97, Sable Island O- 47, Sable Island E-48, Sable Island H-58, Sable Island 2h-58, Sable Island 3H-58, S. Venture O-59, Primrose N-50, Primrose A-41, Olympia O-51, W. Venture C-62, Olympia A-12, Venture B-52, Venture H-22, Venture B-43, Arcadia J-16, Bluenose 2G-47, Citnalta I-59, Penobscot L- 30, Banquereau C-21, Uniacke G-72)
SR1999-03E	Petrographic Study Scotian Shelf Logan Canyon Formation and Missisauga Formation (Alma K-
SR1999-05E	Geochemical Analysis of Well Cuttings form the Albatross B-13, Abenaki J- 56 and Evangeline H-98 wells, Scotian Basin

RELEASED SAMPLE REPORTS

SR#	REPORT DESCRIPTION
SR1999-07P	Frontier Reservoirs of the North Atlantic Margin (Acadia K-62, Albatross B- 13, Alma K-85, Citadel H-52, Cohasset CP 6A P-51, Dauntless D-35, Demascota G-32, S. Desbarres O-76 Evangeline H-98, Glenelg E-58, Glenelg E-58A, Glenelg J-48, Glenelg J-48A, Hercules G-15, Louisbourg J-47, MicMac D-89, MicMac H-86, Moheida P-15, Mohican I-100, Naskapi N-30, N. Triumph G-43, Oneida O-25, Onondaga B-94, Panuke B-90, Penobscot B-41, Peskowsk A-99, Primrose A-41, Sable Island 3H-58, Shubenacadie H-100, SW Banquereau F-34, Tantallon M-41, Thebaud I- 93, Venture B-43, Venture B-52, W. Chebucto K-20, W. Olympia O-51)
SR2000-03EA	Dalhousie University Fission Track Research Laboratory Report 2001-1: Apatite Fission Track Dating and Thermal Modelling of Reservoir Sands #1, #2, and #3 from the Venture V-1, V-4, D-23, B-13, and H-22 Wells, Venture Gas Field, Offshore Nova Scotia
SR2000-06E	Geochemical Results of core samples from Various Scotian Shelf Wells. (Peskowsk A-99,
SR2000-07E	Sedimentology and Stratigraphy of an Ancient Progradational Terrigenous Clastic Shelf Margin, Missisauga Formation (Upper Jurassic-Lower Cretaceous), Offshore Nova Scotia, Canada (Alma K-85, Alma F-67, W. Venture C-62, W. Venture N-91, Thebaud C-74, W. Olympia O-51, N. Triumph G-43, W. Chebucto F-20, Venture B-13, Venture B-52, Venture H-22, Kegeshook G-67, Panuke B-90, Glenelg E-58A, Thebaud I-93, Venture B-43, Glenelg N-49, Panuke F-99, Lawrence D-14, Sable Island C-67)
SR2000-10E	Chemostratigraphy of selected Intervals: Sable Island. (Thebaud I-93, Thebaud C-74, Thebaud 1, Thebaud 3, Thebaud 5)
SR2000-12E	Biostratigraphy of the Interval 2150 - 4200 M TD Shell Shubenacadie H-100
SR2000-13E	Dielectric Constant Measurements of wells Thebaud I-93, Thebaud I-94, Shubenacadie H-100, Evangeline H-98, Shelburne G-29, and Tantallon M-41
SR2000-14E	Geochemical analyses of selected samples for 11 wells, Fluid Inclusion Data, Geochem-TOC & Tock Eval (Glooscap C-63, Glenelg J-48, W. Chebucto K-20, Tantallon M-41, s. Griffin J-13, Dauntless D-35, Mohican I-100, Glooscap C-63, Iroquois J-17, Argo F-38, Adventure F- 80)
SR2001-03E	High Resolution Biostratigraphy of Seven Scotian Shelf Wells: A New Framework for Regional Chronostratigraphy and Depositional Environments. (Bonnet P-23, Mohawk B-93, Shelburne G-29, Albatross B-13, Acadia K- 62, Shubenacadie H-100, Tantallon M-41)
SR2001-07E	Rock Eval. Data (Acadia K-62, Adventure F-80, Erie D-26, Como P-21, Dover A-43, Demascota G-32, Eagle D-21, Primrose A-41)
SR2001-08E	Report on an Examination of Volcanic and associated clasts in cuttings and drill core, wells North Sydney F-24 and North Sydney P-05
SR2001-09E	West Sable SCAL Data – Sable Island 3H-58 and Sable Island 5H-58
SR2001-11E	Regional correlation of Mesozoic Palaeogene sequences across the Greenland-Canada boundary (Hekja O-71, Gjoa G-37, Raleigh N-18) Dinoflagellate cyst stratigraphy of the Raleigh N-18 well, Saglek Basin, Davis Strait, offshore Eastern Canada
SR2001-14E	Petrographic study of Missisauga Reservoir Rocks at Cree E-35, South Sable B-44 and in trepid L-80. Southern Scotian Shelf
SR2001-15E	Thesis "Lower Cretaceous Lithofacies, Synsedimentary Deformation, and Petrology of Glenelg (N-49) and Alma (K-85), Scotian Basin
SR2001-20E	Biostratigraphy and Correlation of the Paleocene to Hauterivian Section Eagle D-21, Glenelg H-38 and West Chebucto K-20, Scotian Shelf Wells, Offshore Eastern Canada
SR2002-04P	Sequence Stratigraphy and Chronostratigraphic correlation of Six Wells Offshore Nova Scotia (Evangeline H-98, Shubenacadie H-100, Tantallon M-41, Albatross B-13, Shelburne G-29, Alma

RELEASED SAMPLE REPORTS

SR#	REPORT DESCRIPTION
	F-67)
SR2002-10E	Lower Cretaceous Lithofacies and Petrology of Peskowsk A-99, and Dauntless D-35 Wells, Scotian Basin.
SR2002-11E	High Resolution Chronostratigraphy and Depositional Environments of Eleven Wells, Scotian Shelf, Offshore Eastern Canada (Abenaki J-56, Alma F-67, Dauntless D-35, Dover A-43, Louisbourg J-47, N. Banquereau I-13, Sachem D-76, Sauk A-57, S. Desbarres O-76, S.W.
SR2003-03E	Biostratigraphy of the Lower Cretaceous P Jurassic Strata in Five Wells Offshore Nova Scotia
SR2003-04E	High Resolution Chronostratigraphy and Depositional Environments of Five Wells, Scotian
SR2003-05E	Core laboratories Reservoir Fluids Report – Calgary TEC Analysis (Panuke PI-1A, Panuke PI-1B)
SR2003-07E	Mobil et al. Arcadia J-16 Palynological analysis of the section between 3,905 m and 6,000 m
SR2004-01E	Nova Scotian Shelf: Biostratigraphic and Sequence Stratigraphic Correlation of the Early
SR2004-02E	Scotian Shelf Oolite Study Potential Oolitic Sand Play of the Scotian Shelf (Acadia K-62,
SR2004-06E	Biostratigraphic Review Banquereau C-21, Dauntless D-35, Louisbourg J-47, Sachem D-76 and South Griffin J-13
SR2005-01E	Poster: Cretaceous to Miocene Benthic Foraminifera from the Scotian Shelf and Slope Wells Cohasset A-52 and Shubenacadie H-100
SR2005-04P	3 Pg Biostrat Analyses: Nannofossil Distribution Chart, Palynology Distribution Chart, Summary Log
SR2005-06E	Evaluation of the Petroleum Systems by 1D and 2D Numerical Modeling and Geochemical Analysis in the Area of Most Recent Exploration Wells on the Deepwater Scotian Slope, Offshore Nova Scotia
SR2005-07E	Chlorite Diagenesis in Reservoir Sandstones of the Lower Missisauga Formation, Offshore
SR2006-013	Lower Cretaceous Lithofacies, Petrology, and Geochemistry of the North Triumph G-43 well,
SR2006-01E	Correlation of the Pre-Albian Strata in the Glenelg, Chebucto, Annapolis and Crimson Areas, Scotian Shelf, Offshore Eastern Canada. Biostratigraphic Correlation Of The Missisauga Formation and Equivalent Strata in 6 Wells
SR2006-02E	A Stratigraphic Reconstruction of Bulk Volatile Chemistry from Fluid Inclusions in Mohawk B-
SR2007-02E	Biostratigraphic Analysis of Five Wells (Dauntless D-35, Sachem D-36, South Griffin J-13, North
SR2007-05E	Data and Interpretation Report for 3 Deep Panuke Condensate Samples (Panuke PI-1B,
SR2007-11E	Lower Cretaceous Lithostratigraphy, Sedimentology, and Petrology of the Kegeshook G-67
SR2007-13E	The relationship of Transgressive systems tracts to sea-floor diagenesis, Lower Cretaceous,
SR2008-02E	Contributions to the Ichnology and Ichnofabrics of Deep Marine Systems - Thin Sections and Report
SR2008-05E	Venture B-43 XRD Analysis, Venture B-43 LPSA Data
SR2009-01E	Wyandot Chalk Properties Eagle D-21 Core, Eagle D-21 Core Log
SR2009-08E	Petroleum Geochemistry of Deep Panuke Oils/Condensates from the Scotian Shelf
SR2010-12E	Source Rock Analyses Toc Rock-Eval and Maturity Testing Brion Island No. 1
SR2011-05E	Origin and Significance Of Clay Minerals in Mesozoic Shales Of The Scotian Basin
SR2011-06E	Fluid Inclusion Data, Toc and Rockeval Data for Penobscot L-30, Moheida P-15, Panuke M-79 and Demascota G-35 Wells

DIRECTORY OF OFFSHORE WELLS

[CNSOPB DMC SUMMARY PAGE](#)