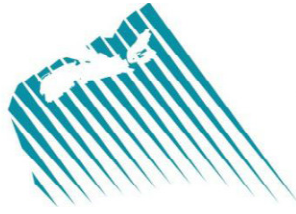


CNSOPB



CANADA-NOVA SCOTIA
OFFSHORE PETROLEUM BOARD

**INFORMATION ON WELL DATA, GEOLOGICAL DATA,
AND
GEOPHYSICAL DATA**

February 2012

BOARD INFORMATION

Head Office

Canada - Nova Scotia Offshore Petroleum Board
6th Floor, TD Centre
1791 Barrington Street
Halifax, Nova Scotia
B3J 3K9
Canada

Phone: (902) 422-5588
Fax: (902) 422-1799
URL: <http://www.cnsopb.ns.ca>

Geoscience Research Centre

Canada - Nova Scotia Offshore Petroleum Board
Geoscience Research Centre
201 Brownlow Avenue
Suite 27
Dartmouth, Nova Scotia
B3B 1W2
Canada

Phone: (902) 468-3994
Fax: (902) 468-4584
E-mail: mverrall@cnsopb.ns.ca

Supervisor, Geoscience Research Centre

Mary Jean Verrall

CONTENTS

1. INTRODUCTION	1
A. APPLICABLE LEGISLATION	1
B. AREA OF JURISDICTION	1
C. DISCLOSURE OF TECHNICAL DATA	1
D. GEOSCIENCE RESEARCH CENTRE	2
E. EXPLANATION OF PROGRAM NUMBERS FOR GEOLOGICAL AND GEOPHYSICAL PROGRAMS	5
2. RELEASED GEOLOGICAL and RELATED REPORTS	7
3. RELEASED PHYSICAL ENVIRONMENTAL REPORTS	9
4. RELEASED SAMPLE REPORTS	16
5. RELEASED WELLSITE SURVEY REPORTS	21
6. RELEASED GEOPHYSICAL REPORTS	26
7. DIRECTORY OF OFFSHORE WELLS	43

1. INTRODUCTION

This publication contains a directory of wells and lists released geological and geophysical reports available from the Canada-Nova Scotia Offshore Petroleum Board ("CNSOPB" or the "Board") for the Nova Scotia offshore area. Data on significant discoveries and the ownership of interests is also included.

A. APPLICABLE LEGISLATION

Petroleum exploration and production activities in the Nova Scotia offshore area are administered by the Board pursuant to the *Canada-Nova Scotia Offshore Petroleum Resources Accord Implementation Act*, S.C. 1988, c.28, as amended, and the *Canada-Nova Scotia Offshore Petroleum Resources Accord Implementation (Nova Scotia) Act*, S.N.S. 1987, c.3, as amended (the "legislation") and regulations made thereunder. The Board has issued Guidelines in respect of certain matters, a list of which is included in Section 10.

B. AREA OF JURISDICTION

The geographic limits of the Board's jurisdiction are set out in Schedule I to the legislation (see Fig. 1). This area (the "offshore area") is subject to an area of French jurisdiction around the islands of St. Pierre and Miquelon which is not reflected in Schedule I as it resulted from a later adjudication. The French maritime boundary is described in Appendix II.

C. DISCLOSURE OF TECHNICAL DATA

Sections 122 and 121 respectively of the federal and provincial legislation deal with the confidentiality and disclosure of information provided for purposes of the legislation.

Information or documentation in respect of an **exploratory well** is held confidential for 2 years following the well termination date. The confidentiality period for a delineation **well** is 2 years following the termination date of the discovery well on the same prospect, or 90 days following the termination date of the delineation well, whichever is longer. For a **development well**, the confidentiality period is 2 years following the termination date of the discovery

well on the same prospect, or 60 days following the termination date of the development well, whichever is longer. General information on a well, including its name, operator, classification, location, identity of the drilling unit, depth, and operational status of the drilling program may be obtained from the Board on a current basis.

Information and documentation in respect to **non-exclusive geophysical work** is held confidential for at least 10 years following the completion date of the work. The geophysical regulations define a non-exclusive survey as a geophysical operation that is conducted to acquire data for the purpose of sale, in whole or in part, to the public.

Information and documentation in respect to **exclusive geological** or **exclusive geophysical work** is held confidential for a period of 5 years following the completion date of the work. The date of completion is considered to occur 6 months after the field program is terminated. Operators are required to submit comprehensive reports on each program conducted in search of hydrocarbons in the offshore area. These reports, together with associated items such as interpretive maps, seismic sections, well logs, cores, cuttings, fluid samples and paleontological materials derived from such programs are held confidential for the requisite period, then released for public examination.

Over 432 released **geological and geophysical reports** covering the Nova Scotia offshore area are currently available for inspection (see Sections 2 to 4). The Board publication, *Geophysical and Geological Programs in the Nova Scotia Offshore Area - Guidelines for Work Programs, Authorizations and Reports* describes the required format and general content of a typical geological/geophysical report. Each report generally consists of three parts. The first is the operations report, which includes a location map, summary

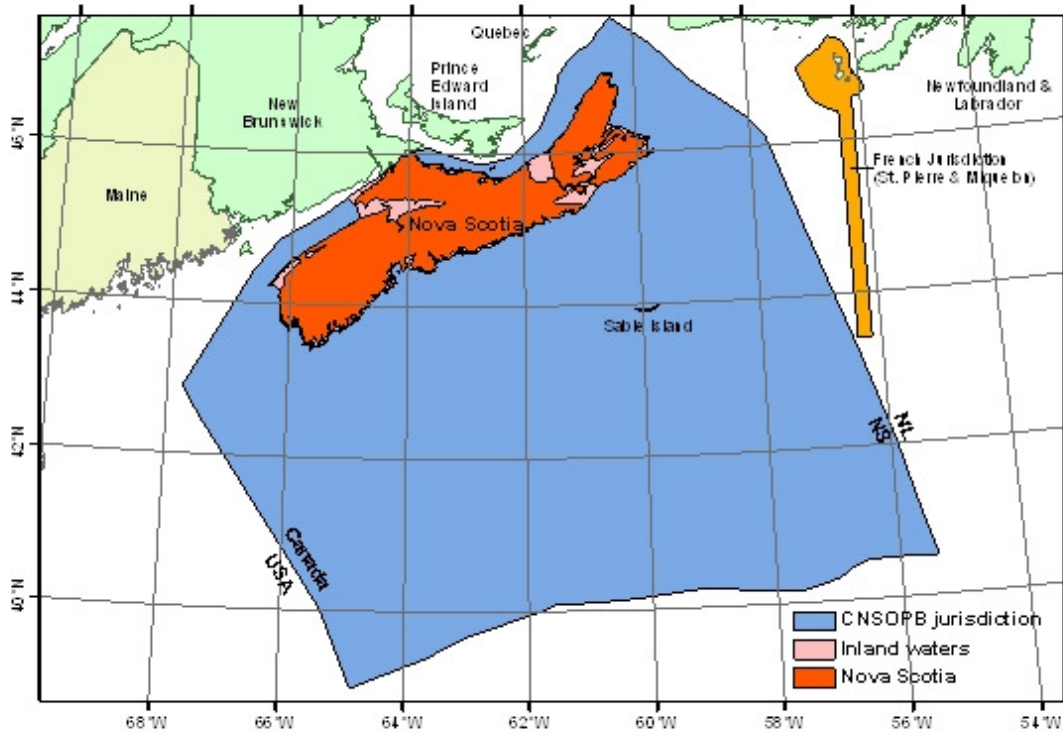


FIGURE 1: Limits of Offshore Area

of operations statistics, description of data acquisition equipment and field procedures. The second part reports on computer processing of data, which is of particular relevance for geophysical reports. The final part is the interpretation report. This includes a written discussion with illustrations of the final processed data and interpretive maps. Copies of all final processed seismic sections and shotpoint location maps are included. Other interpretive aids such as seismic modeling studies or synthetic seismograms may also be included. **The completeness and quality of reports vary depending on the operator and the program vintage.**

There are approximately 207 **well history reports** currently available for the Nova Scotia offshore area. The required format and general contents of a well history report are described in the Board's publication, *Procedures and Guidelines for the Nova Scotia Offshore Petroleum Drilling Regulations*. A well history report includes a

summary of drilling operations, description of cuttings, cores of all types, fluid samples acquired, discussion of geology, evaluation programs, test results, etc. Final copies of all well logs are also available.

D. GEOSCIENCE RESEARCH CENTRE

The Board's Geoscience Research Centre facility provides geological and geophysical information and services for the Nova Scotia offshore area. In addition to staff offices, the facility consists of three working areas: a data and core storage warehouse, public viewing rooms, and a micropaleontology laboratory. Subsurface samples from approximately 207 offshore petroleum exploration and development wells drilled by industry in the Nova Scotia offshore area are stored at the facility. The facility curates a current hard copy inventory

and microfiche record of geological, well history and geophysical information. Examination space, information reports, and materials for study are made available to the public free of charge, with hours of operation weekdays from 8:00 a.m. to 4:00 p.m.

A Facility Supervisor, a Data Management Centre Technician, two Geological Technologists, and an Administrative Assistant constitute the staff of the Geoscience Research Centre. The staff provides access to well information, geophysical, geological reports, cores, cuttings and other well samples for research and sampling purposes. The facility's 1,200 square metre data and core storage warehouse archives all geological and geophysical reports, well site survey reports and several types of subsurface samples. The staff maintains and curate cores, cuttings, and prepared residues for examination by academic, industry and government scientists. Unwashed cutting samples are kept in plastic-lined cloth bags, and geochemistry samples have been dried and are now stored in plastic bags. Bulk unwashed cutting samples, and all drill cores are stored in cardboard boxes which in turn are stored on racked pallets. Washed cuttings samples are in 25 ml plastic vials arranged in trays which are stored in steel cabinets. Sidewall cores are stored in 25 ml plastic vials in steel storage cabinets, as are the collections of picked micropaleontology slides. Samples from well site seabed surveys are also catalogued and maintained as are fluid samples.

Each well is assigned a unique reference number (known as a **D number**) and all related subsurface materials are identified by means of that number. A listing of all wells appears in Section 7: Directory of Offshore Wells.

The facility's public examination areas consist two data viewing rooms for viewing geological and geophysical reports and data as well as two individual core examination rooms each containing tables for studies of cores and samples. A binocular microscope and other sample examination aids are available to users upon request. Requests

to sample materials in storage must be submitted in writing with an outline of the type of study to be conducted. If permission to sample is granted, the size of sample is determined with reference to the amount remaining and also the nature of the study. The amount of sampling and the degree of duplication of studies is strictly regulated. All unused sample must be returned to the facility and one copy of the results of the study are to be forwarded to the Board's office in Dartmouth.

The facility's laboratory has the capability to process samples from all wells for extraction of micropaleontological material. Access to the laboratory is provided for users wishing to prepare their samples taken for palynology processing, vitrinite reflectance, petrology, etc. The laboratory also contains equipment for petrological determinations, including a rock saw to sample cores for thin sections.

The GRC also houses the Board's digital Data Management Centre (DMC).

Data Management Centre (DMC)

The Board's digital Data Management Centre (DMC) is the first data management centre in North America to offer free of charge publicly accessible digital offshore petroleum data via a web-based interface. The DMC provides for the submission, loading, management and distribution of entitled petroleum data. Initially, the DMC will manage and distribute the following digital petroleum data: well data (i.e. logs and reports), seismic image files (i.e. PDF, and TIFF), Geographic Information Systems data (i.e. Licences, wells, bathymetry etc.), and production data. In the future the DMC could be expanded to include operational, safety, environmental, fisheries data, etc. The DMC is located in a dedicated computer room in the Board's Geoscience Research Centre in Dartmouth, Nova Scotia.

The DMC provides global access to quality data, significantly improving efficiency in obtaining and analyzing petroleum

data, managing entitlements and reducing the cost of regulatory compliance for industry. Additional benefits of the DMC include prevention of data loss, reduction in data storage costs and facilitating scientific research by the regulatory Boards, industry, governments, universities, etc. The DMC was officially opened on October 2, 2007. Schlumberger Information Solutions (SIS) designed, installed and configured the DMC hardware, software, and user workflows. The loading and verification of all offshore data, dating back to 1960, is ongoing. The Board will prioritize the loading of data in response to user requests, and update the DMC website on a regular basis so users can determine when new data is available.

As of January 2011, complete data sets for 207 offshore Nova Scotia wells, 24 data

sets from wells in other jurisdictions and 308 seismic programs (approximately 15,104 items), have been loaded into the DMC. Along with the PDF & TIFF images available in the DMC, we also have two seismic programs (8620-N011-001E, and NS24-N011-001E) with full SEG Y, SEG D, and the gathers available on the DMC FTP site.

Fun fact: The DMC's eight servers are named after shark's which swim in the waters offshore Nova Scotia:

- Tiger
- Blue
- Thresher
- Greenland
- Great White
- Whale
- Bull
- Hammerhead

Facility Facts (April 2011)

Wells drilled in N.S. offshore area	207
Spud date of oldest well (Sable Island C-67)	June 7, 1967
Drill core in storage	4,854 boxes
Metres of drill core in storage	6,356.68 m
Sidewall cores in storage	14,508 vials
Washed cuttings in storage	166,182 vials
Unwashed cuttings in storage (approx.)	139,746 bags
Geochemistry samples in storage (approx.)	11,549 bags
Size of data and sample storage repository	1,200m ²
Released geological & geophysical reports	over 432

E. EXPLANATION OF PROGRAM NUMBERS FOR GEOLOGICAL AND GEOPHYSICAL PROGRAMS

The following released geological, geophysical and related reports (Sections 2, 3 and 4) are listed alphabetically by program number and company code. Upon approval of an application to conduct a geophysical or geological program, a unique program number is assigned to the project by the regulator. For programs completed prior to January 1990 this number was assigned by the federal Department of Energy, Mines and Resources (EMR). The number is coded to contain:

- the geographic region to which the program relates;
- the type of geophysical or geological work proposed;
- the company operating the program; and
- the sequential number of that type of program operated by that company.

For example, a typical program number for offshore Nova Scotia could be 8624-M003-044E. It follows the format ABCD-EFGH-IJKL, each sequence of letters corresponding to an alphanumeric code:

- AB (86 in the example) identifies an east coast offshore exploration program. NS identifies an offshore Nova Scotia program completed after January, 1990 and approved by the Canada-Nova Scotia Offshore Petroleum Board.
- CD (24 in the example) identifies the type of geological/geophysical work where:
 - 20 - combined geophysical survey
 - 21 - aeromagnetic survey
 - 23 - seafloor gravity survey
 - 24 - seismic reflection survey
 - 25 - seismic refraction survey
 - 26 - shallow seismic, seabed survey, geotechnical
 - 27 - (re)processing, (re)interpretation
 - 28 – geophysical (other)
 - 29 – onshore geophysical
 - 30 - combined geological program

- 31 - offshore geological program
- 32 - paleontological/palynological study
- 33 - geochemical study
- 34 - petrography
- 35 - purchase of geological studies
- 36 - isotope age dating
- 37 - in-house geological studies
- 39 - onshore geological surveys
- 40 - research program/environmental
- 41 – environmental data
- 42 – chemistry & toxicity
- 43 – aesthetic environmental
- 45 – pipeline geophysical survey
- 44 – basis of design
- 46 – *geotechnical
- 48 – development plan

*note: prior to 2004 geotechnical programs were classified with 26-shallow seismic, seabed

- EFGH (M003 in the example) is the operator or company code where:

- A004 Amoco
- A012 Austin Exploration
- A014 Aqua Terra
- A024 Amoco Production Co.
- B003 B.P.O.P.
- B004 Banner Petroleum Limited
- B011 Bow Valley
- C002 Canadian Export Oil & Gas
- C004 Chevron Canada
- C012 Canadian Reserve Oil and Gas
- C015 Caravel / Catalina Exploration
- C020 Canadian Superior
- C033 Canadian Ashland Exploration
- C034 Central Del-Rio Oils
- C039 Cavalier Energy Inc.
- C055 Canterra
- C146 Canadian Superior Energy Inc.
- D001 Digicon Exploration
- D003 Dome Petroleum
- D004 Delta Exploration
- D009 Dome Canada
- D015 Dalhousie University
- E006 Exxon
- E040 ExxonMobil Canada Limited
- E043 EnCana Corporation
- G001 Gulf Canada
- G005 Geophysical Services

G011	Geophoto Services	S024	Seiscan Delta
G014	Great Plains Development	S047	Simin Expl. Consultants Ltd
G020	Gebco (US) Inc.	S092	St. Mary's University
G026	Imperial Oil Resources	T007	Texaco Canada
G041	Government of Canada	T013	Transalta Oil & Gas
G065	Geco-Prakla	T021	Texaco Canada Resources
G075	GX Technology	T036	Teknica Resource Develop. Ltd
H005	Home Oil	T063	TGS-NOPEC Geophysical Company
H006	Husky Oil Operations Ltd.	U003	Union Oil
H007	Hudson's Bay Oil and Gas	V001	Voyager Petroleums
I003	Imperial Oil Resources Limited	V003	Veritas Seismic
J001	Esso Resources	W006	Western Decalta
J008	ICG Resources	W013	Western Geophysical
J013	Jebco Surveys	W030	Western-Geo Canada
L023	Lasmo Nova Scotia Limited		
K006	Kerr, J. William & Associates		
M003	Mobil Oil Canada		
M006	Murphy Oil		
M013	McDermott, J. R.		
M055	Marathon Canada Limited		
N005	Norcen Energy Resources		
N011	Nova Scotia Resources Limited		
O011	Onaping Resources Limited		
P003	PanCanadian Petroleum Limited		
P011	Pacific Petroleums		
P028	Petro-Canada		
R005	Robertson Research - N. America		
S001	Siebens Oil & Gas		
S003	Shenandoah Oil		
S006	Shell Canada Resources		
S008	Sun Oil		
S009	Scurry-Rainbow Oil		
S014	SOQUIP		
S016	Sultan Exploration		

- IJK (044 in the example) is the sequential program number of that type of program by that operator.
- L (E in the example) is the program type identifier where:
 - E - exclusive program
 - P - participation or speculative program
 - DT - data trade
 - DA - data acquisition

Therefore, the program number 8624-M003-044E indicates the 44th seismic reflection survey in the East Coast Offshore Region conducted exclusively for Mobil, and carried out prior to January, 1990.

2. RELEASED GEOLOGICAL and RELATED REPORTS

Program #	Completion Date	Report Description
8630-A012-002P	1974	Regional Participation Survey-Stratigraphic Logging and Formation Evaluation for 34 Wells-Scotian Shelf, Grand Banks, & Gulf of St. Lawrence
8631-A004-001E	18-Jul-65	Corehole and Sampling Project, Grand Banks, 1965
8646-D015-002E	7-Aug-85	Sable Island Borehole Project Centre for Marine Geology, Dalhousie University and Atlantic Geoscience Centre
8631-K006-001P	1986	Geology and Petroleum Potential of the Scotian Shelf
8631-M003-001E	30-Aug-65	Geological Report on Sable Island Corehole Program
8631-M003-002E	11-Sep-72	Soil & Foundation Investigation, Sable Island for Thebaud P-84
8631-S006-001E	21-Sep-70	Marine Hydrocarbon Survey for Chippewa, West & East Orpheus
8631-S006-002E	12-Aug-71	Marine Hydrocarbon Survey Continental Slope, for Chippewa, Tuscarora, Jason & Roseway Basins Area
8631-S006-003E	1971	Soil & Foundation Investigation Reports for: Oneida O-25, Naskapi N-30, Huron P-96, Onondaga O-95, MicMac J-77, Abenaki L-97
8632-A004-003E	15-Apr-71	Palynologic Analysis, Brion Island # 1 Well
8633-A004-001E	19-Aug-71	Report on Source Rock Evaluation - Brion Island No. 1
8633-A004-004E	27-Sep-87	Geochem SNIFFER Report, Sable Island, Bay of Fundy
8633-A004-005E	27-Sep-87	Sable Island Airborne, Air Trace Geochem Survey
8633-R005-001P	1977	Geochem Evaluation and Biostratigraphy Reports for: Bluenose G-47, Dauntless D-35, Eagle D-21, MicMac H-86, Mohawk B-93, Mohican I-100, Oneida O-25, Onondaga E-84, Primrose N-50, Sauk A-57, Thebaud P-84, Triumph P-50
NS33-T062-002P	8-Oct-00	Nova Scotia Consortium Surface Geochemical Exploration Program Report
8635-B003-001DA	1972	Micropaleontology, Palynology, & Stratigraphy of: Huron P-96, Tors Cove D-52, Sable Island C-67, Wyandot E-53, Grand Falls H-09; Biostratigraphy Reports on: Oneida O-25, MicMac J-77, Naskapi N-30, Mohawk B-93, Onondaga E-84
8635-C002-001E	30-Dec-70	Regional Geology Eastern Canada Offshore
8635-C004-001DA	30-Dec-70	Regional Geological Interpretation, Misaine and Green Bank Areas
8635-C020-002DA / 8635-C020-003DA	28-Feb-75	1974 Stratigraphy and Reservoir Analysis, Scotian Shelf

Program #	Completion Date	Report Description
8635-M013-001E	30-Dec-70	Regional Study of Atlantic Offshore Petroleum Potential
8636-G041-001E	30-Dec-59	Geology of Maritimes Related to Petroleum Possibilities 1959
8637-G011-001P	30-Dec-72	Geodata Analysis Maritimes and Adjacent Shelf Areas
8637-M006-001E	31-May-75	Report on Potential Gas Reserves Cape Breton Area, North Sydney I-05
8645-M003-006E	14-Sep-84	1984 Venture Development Project-Offshore Pipeline Geophysical Survey, Offshore to Country Harbour
8637-W006-001E	Jan-70	Regional Geology and Petroleum Prospects-Maritime Region
8645-M03-06E	1983	Venture Development Project – Offshore Pipeline Geophysical Survey, 1983 Offshore to Country Harbour.
8639-A004-001E	3-Aug-66	Stratigraphic Studies, Nova Scotia and Magdalen Island Areas
8639-C020-001DA	22-Dec-72	Micropaleontology, Palynology and Stratigraphy of: Missisauga H-54, Omeida O-25, Sable Island C-67, Onondaga O-95, Onondaga E-84, Abenaki L-57, MicMac H-86, MicMac J-77, Wyandot E-53, Cree E-35, Mohawk B-93, Iroquois J-17, Huron P-96, Naskapi N-30
8639-H007-001E	24-Aug-68	Maritimes Geological Field Party, Cape Breton and Magdalen Island
8639-M003-001E	1-Sep-69	Geological Report- Maritime Provinces, W. Newfoundland
8639-M003-002E	30-Jun-72	Soil Investigation- West Sable Island, Sable Island XH1038
8639-S006-001E	2-Oct-72	Reconnaissance Geological Examination of Carboniferous Strata in Nova Scotia and New Brunswick.
8639-S016-001E	19-Feb-72	Geologic Evaluation of Chedabucto Bay

3

RELEASED PHYSICAL ENVIRONMENTAL REPORTS

Program No.	Completion Date	Report Description
8640-H007-002E	1980	Current Meter Observations - Beaton Point E-47 and Beaton Point F-70
8640-J001-004E	1977	Ice and Oceanographic Investigations of Davis Strait
8640-J001-011E	1978	Wave Climate Study of Southern Davis Strait
8640-J001-011E	1978	A Proposed Weather Forecasting System for Southern Davis Strait
8640-J001-011E	1978	A Climatological Study of the Southern Davis Strait
8640-J001-011E	1978	Comparison of " Asiak " Buoy Data to Data Extracted from Synoptic Weather Maps
8640-J001-011E	1978	Comparison of Meteorological Data from Brevoort Island and the " Asiak " Buoy
8640-M003-006E	1978	A Study of Oil Spill Movement in the Vicinity of Sable Island : Phase 1, Phase 2, and Amendment to Phase 2
8640-M003-029E	1980	Metoc Wave Chart Analysis- Grand Banks and Sable Island
8640-M003-117E	Nov-84	Current Measurements at West Venture C-62 , Scotian Shelf
8640-M003-117E	23-Mar-85	Physical Environmental Report, Meteorological and Sea State Data Analysis- West Venture C-62 , Scotian Shelf
8640-M003-121E	17-Sep-85	Physical Environmental Report, Current Meter Data Analysis- Thebaud I-93 , Scotian Shelf
8640-M003-123E	Apr-85	Data Report, Current Measurements- West Venture N-01 , Scotian Shelf
8640-M003-004P	1973	Design of a Hydrocarbon Baseline Study of the Scotian Shelf- Banquereau Bank
8640-S006-002P	Oct-71	Nova Scotia Environmental Report- Laurentian Channel, Georges Bank, Banquereau Bank
8640-S006-003E	21-Aug-73	Geophysical Report on Testing of New Seismic Equipment, Super-Long Air Gun, Sydney Basin
8640-S006-003P	Aug-73	Geophysical Reports on Experimental Testing of New Seismic Equipment- Sydney Basin
NS41-C004-001DA	18-Jun-2001	Characterization of Benthic Habitat in the Mahone Block Exploration Licence 2359
NS41-C146-001DA	23-Sep-2002	Characterization of Benthic Habitat in the Mayflower Block Exploration Licence 2406
NS41-E040-001E	21-Dec-2001	2001 Environmental Monitoring Report - Thebaud and South Venture

Program No.	Completion Date	Report Description
NS41-E040-02E	2004	2004 Physical Oceanographic Data Report – North Triumph, Thebaud and Venture-South Venture sites.
NS41-E040-03E	2005	2005 Physical Oceanographic Data Report for North Triumph, Thebaud and Venture- South Venture sites.
NS41-E040-04E	2006	2006 Annual Environmental –Meteorological Data Report – Thebaud
NS41-E040-04E	2006	2006 Wind and Sea State Forecast Verification for the ExxonMobil Sable Offshore Energy Project
NS41-E040-04E	2006	2006 Physical Oceanographic Data Report – Current Data for North Triumph, Thebaud, Venture and South Venture
NS41-E040-04E	2006	2006 Physical Oceanographic Data Report – Wave Data for North Triumph, Thebaud, Venture and South Venture
NS41-E040-05E	2007	2007 Wind and Sea State Forecast Verification for the ExxonMobil Sable Offshore Energy Project
NS41-E040-05E	2007	2007 Physical Oceanographic Data Report – Wave Data for Thebaud, Venture and South Venture
NS41-E040-05E	2007	2007 Physical Oceanographic Data Report – Current Data for Thebaud
NS41-E040-05E	2007	2007 Annual Meteorological and Sea State Data Report
NS41-E040-006E	2008	Physical Oceanographic Data Reports: 2008 Wave Data - Thebaud
NS41-E040-006E	2008	Physical Oceanographic Data Reports: 2008 Current Data - Thebaud
NS41-E040-006E	2008	Physical Oceanographic Data Reports: 2008 Wave Data - Venture and S. Venture
NS41-E040-006E	2008	Physical Oceanographic Data Reports: 2008 Wave Data - North Triumph
NS41-E040-006E	2008	Physical Oceanographic Data Reports: 2008 Current Data - North Triumph
NS41-E040-008E	2009	Physical Oceanographic Data Reports: 2009 Current and Wave Data - Thebaud and Venture
NS41-E040-009E	31-Dec-10	Sable Offshore Energy Project 2010 Annual Safety and Environmental Report
NS41-E043-001E	15-Sep-02	Physical Oceanographic Data Reports 2002 Stonehouse Block
NS41-E043-002E xref NS26-P003-002E , NS26-P003-005E, NS26-E043-001E, NS26-E043-004E	28-Jan-08	Benthic Study for the Deep Panuke Subsea Pipeline and Production Facility
8641-H005-001E	13-Oct-84	Meteorological Data Analysis- Louisbourg J-47 , Scotian Shelf

Program No.	Completion Date	Report Description
8641-H005-002E X-ref 8641-H5-3E-1	30-May-85	Meteorological Data Analysis, Current Meter Data Analysis - Citadel H-52 , Scotian Shelf
8641-11-H5-1-1-AC1	6-Feb-84	Current Meter Data Analysis, Real Time Currents Recorded from the Louisbourg J-47, Scotian Shelf
8641-11-H5-1-1-AC2	15-Apr-84	Current Meter Data Analysis- Louisbourg J-47 , Scotian Shelf
8641-11-H5-1-1- AC3	20-Jun-84	Current Meter Data Analysis- Louisbourg J-47 , Scotian Shelf
8641-11-H5-1-1- AC4	27-Aug-84	Current Meter Data Analysis- Louisbourg J-47 , Scotian Shelf
8641-11-H5-1-1- AC5	7-Oct-84	Current Meter Data Analysis- Louisbourg J-47 , Scotian Shelf
8641-11-H5-1-2- AC1	23-Apr-85	Current Meter Analysis- Citadel H-52 , Scotian Shelf
8641-11-H5-1-2- AC2	24-May-85	Current Meter Analysis- Citadel H-52 , Scotian Shelf
8641-11-H5-1-2- AFM	30-May-85	Meteorological Data Analysis- Citadel H-52 , Scotian Shelf
8641-H006-005E	20-Aug-84	Environmental Data Analysis Report- South Griffin J-13 , Scotian Shelf
8641-H006-006E	2-Aug-84	Environmental Data Analysis Report- ChebuctoK-90 , Scotian Shelf
8641-H006-007E	1984	Meteorological Data Analysis- Evangeline H-98 , Scotian Shelf
8641-H006-020E	3-May-85	Physical Environmental Data Report, Meteorology- Hesper P-52 , Scotian Shelf
8641-H006-023E	22-Dec-84	Physical Environmental Data Report, Oceanography- Hesper P-52 , Scotian Shelf
8641-11-H6-1-3- AF	Aug-86	Forecast Program Report- West Chebucto K-20 , Scotian Shelf
NS41-K018-001DA xref NS26-J034-001P	Jun-01	Characterization of Benthic Habitat in Pinehurst & Pembroke Blocks Exploration Leases 2396 & 2386
8641-M003-004E	28-Jun-83	Meteorological Data Analysis- West Venture B-92 Scotian Shelf
8641-M003-005E	12-Dec-84	Oceanographic and Meteorological Design Parameters- Venture H-22 and West Olympia B-92 , Scotian Shelf
8641-M003-006E	25-Apr-82	Environmental Data Analysis- Venture B-43 , Scotian Shelf
8641-M003-006E	24-Apr-82	Report in Data Reduction and Processing- Venture B-43 , Scotian Shelf
8641-M003-014E	1982	The Physical Fate of Drilling and Production Discharges in the Venture Field .
8641-M003-015E	1982	Extreme Oceanographic Data – Sable Island
8641-M003-022E	3-Jan-83	Environmental Data Analysis- South Venture O-59 , Scotian Shelf
8641-M003-023E	10-Jan-83	Environmental Data Analysis- Olympia A-12 , Scotian Shelf
8641-M003-071E	Jul-85	Meteorological and Oceanographic Criteria Study-1985-Extreme Bottom Current Criteria Along the Pipeline Corridor

Program No.	Completion Date	Report Description
8641-M003-100E	29-Jun-85	Physical Environmental Report, Meteorological and Sea State Data Analysis- West Venture N-01 , Scotian Shelf
8641-M003-101E	7-Jul-85	Physical Environmental Report, Meteorological and Sea State Data Analysis- West Venture N-91 , Scotian Shelf
8641-M003-102E	20-Mar-85	Physical Environmental Report, Current Meter Data Analysis- West Venture B-92 , Scotian Shelf
8641-M003-103E	9-Nov-85	Weather Forecast Verification- West Olympia O-51 , Scotian Shelf
8641-M003-104E	22-Oct-85	Physical Environmental Report, Current Meter Data Analysis- West Olympia O-51 , Scotian Shelf
8641-11-M3-9-1- AMW	5-Jun-81	Environmental Data Analysis- Venture B-13 , Scotian Shelf
8641-11-M3-9-1- AMW	Jul-82	Report on Data Reduction and Processing- Venture B-13 , Scotian Shelf
8641-11-M3-9-5- AF	23-Mar-85	Weather Forecast Verification- West Venture C-62 , Scotian Shelf
8641-11-M3-9-6- AF	27-Sep-85	Weather Forecast Verification- Thebaud I-93 , Scotian Shelf
8641-11-M3-9-6- AM	Oct-86	Final Well History Report, Meteorological and Sea State Data Analysis- Thebaud I-93 , Scotian Shelf
8641-11-M3-9-6- AW	8-Aug-86	Data Report, Wave Climate Report- Thebaud I-93 , Scotian Shelf
8641-11-M3-10-3- AMW	19-Jul-83	Environmental Data Analysis- Arcadia J-16 , Scotian Shelf
8641-11-M3-10-5- AF	7-Jul-85	Weather Forecast Verification- West Venture N-91 , Scotian Shelf
8641-11-M3-13-1- AF	29-Jun-85	Weather Forecast Verification- West Venture N-01 , Scotian Shelf
8641-11-M3-14-1- AM	9-Nov-85	Physical Environmental Report, Meteorological Data Analysis- West Olympia O-51 , Scotian Shelf
8641-11-M3-14-1- AW	8-Aug-86	Data Report, Wave Climate Report- West Olympia O-51 , Scotian Shelf
8641-11-M3-14-2- ACW	26-Sep-86	Final Well History Report, Current Meter and Wave Data Report- Thebaud C-74 , Scotian Shelf
8641-11-M3-14-2-AF	26-Sep-86	Final Well History Report, Forecast Verification Report- Thebaud C-74 , Scotian Shelf
8641-11-M3-14-2- AM	26-Sep-86	Final Well History Report, Meteorological Summary Report- Thebaud C-74 , Scotian Shelf
8641-P028-011E	Nov-83	Oil Slick Trajectory and Blowout Analysis- Albatross G-02 , Scotian Shelf
8641-P028-033E	1983	Currents Near St. Paul P-91 Drilling Location Data Report- St. Paul P-91 , Cabot Strait
8641-P028-034E	1984	Currents Near Bonnet P-23 Drilling Location Data Report- Bonnet P-23 , Scotian Shelf

Program No.	Completion Date	Report Description
8641-P028-036E	1985	Weather and Sea State Forecasting, Final Summary Report- Albatross B-13 , Scotian Shelf
8641-P028-036E	29-Mar-85	Environmental Data Analysis, Final Report- Albatross B-13 , Scotian Shelf
8641-P028-038E	Aug-85	Environmental Monitoring Services, Current Meter Data Report- Albatross B-13 , Scotian Shelf
8641-P028-043E	8-Apr-85	Environmental Data Analysis, Final Report- Shelburne G-29 , Scotian Shelf
8641-P028-054E	1985	Weather and Sea State Forecasting, Final Summary Report- Shelburne G-29 , Scotian Shelf
8641-P028-055E	Jun-86	Physical Environmental Data Report, Oceanography, Cohasset A-52 Current Meter Program- Cohasset A-52 , Scotian Shelf
8641-P028-056E	27-Mar-86	Final Well History Report, Meteorological Data Analysis Report- Cohasset A-52 , Scotian Shelf
8641-P028-057E	Sep-86	Final Well History Report, Forecast Verification Report- Cohasset A-52 , Scotian Shelf
8641-11-P28-5-1- AC	Jun-86	Physical Environmental Data Report, Oceanography, Cohasset A-52 Current Meter Program- Cohasset A-52 , Scotian Shelf
8641-11-P28-5-1- AW	Jul-86	Final Well History Report, Wave Data Report- Cohasset A-52 , Scotian Shelf
8641-11-P28-5-2- AC	1987	Physical Oceanographic Data Report, Current Meter Data- Como P-21 , Scotian Shelf
8641-11-P28-5-2- AF	Jan-88	Final Well History Report Forecast Verification Report- Como P-21 , Scotian Shelf
8641-11-P28-5-2- AM	Jul-87	Final Well History Report, Meteorological Data Analysis Report- Como P-21 , Scotian Shelf
8641-11-P28-5-2- AW	Jan-88	Final Well History Report, Wave Data Report- Como P-21 , Scotian Shelf
8641-11-P28-5-3- AC	1987	Physical Oceanographic Data Report, Current Meter Data- Panuke F-99 , Scotian Shelf
8641-11-P28-5-3- AF	Jan-87	Final Well History Report, Forecast Verification Report- Panuke F-99 , Scotian Shelf
8641-11-P28-5-3- AM	25-Aug-87	Meteorological Data Analysis Report, Final Well History Report- Panuke F-99 , Scotian Shelf
8641-11-P28-5-3- AW	7-Jan-88	Final Well History Report, Wave Data Report- Panuke F-99 , Scotian Shelf
NS41-P092-001DA	18-Jun-01	Benthic Habitat Characterization ini the Exploration Licenses of Highland (EL 2395), Barrington (EL 2397), Torbrook (EL 2384) Caledonia (EL2390), Weymouth (EL 2380) & Plymton (EL 2394)

Program No.	Completion Date	Report Description
8641-S006-011E	14-Aug-84	Current Meter Data Analysis, Final Report #1- South Desbarres O-76 , Scotian Shelf
8641-S006-011E	2-Oct-84	Current Meter Data Analysis, Final Report #2- South Desbarres O-76 , Scotian Shelf
8641-S006-012E	23-Oct-84	Current Meter Data Analysis, Final Report #1- Glenelg E-58 , Scotian Shelf
8641-S006-013E	4-Apr-85	Current Meter Data Analysis- Alma K-85 , Scotian Shelf
8641-S006-013E	10-Apr-85	Meteorological Data Analysis- Alma K-85 , Scotian Shelf
8641-S006-014E	26-Jan-85	Meteorological Data Analysis- Glenelg H-38 , Scotian Shelf
8641-S006-017E	21-Oct-84	Forecast Verification Statistics- Glenelg E-58 , Scotian Shelf
8641-S006-018E	13-Oct-84	Forecast Verification Statistics- South DesBares O-76 , Scotian Shelf
8641-S006-019E	31-Dec-85	Final Well History Report, Current Meter Data Report- North Triumph G-43 , Scotian Shelf
8641-S006-020E	8-Jun-85	Current Meter Data Analysis- Peskowesk A-99 , Scotian Shelf
8641-S006-021E	13-Jun-85	Physical Environmental Data Analysis, Final Report- Peskowesk A-99 , Scotian Shelf
8641-S006-026E	Jun-86	Final Well History Report, Wave Data Report- North Triumph B-52 , Scotian Shelf
8641-S006-027E	Jun-86	Final Well History Report, Wave Data Report- Tantallon M-41 , Scotian Shelf
8641-S006-028E	24-Jan-85	Current Meter Data Analysis, Final Report- Glenelg H-38 , Scotian Shelf
8641-S006-029E	Sep-86	Final Well History Report, Current Meter Data Report- Tantallon M-41 , Scotian Shelf
8641-S006-030E	17-Apr-86	Final Well History Report, Meteorological Summary Report- Tantallon M-41 , Scotian Shelf
8641-S006-031E	17-Apr-86	Final Well History Report, Forecast Verification Report- Tantallon M-41 , Scotian Shelf
8641-S006-032E	26-Mar-86	Final Well History Report, Current Meter Data Report- North Triumph B-52 , Scotian Shelf
8641-S006-033E	29-Mar-86	Final Well History Report, Meteorological Summary Report- North Triumph B-52 , Scotian Shelf
8641-S006-034E	29-Mar-86	Final Well History Report, Forecast Verification Report - North Triumph B-52 , Scotian Shelf
8641-S006-035E	1-Feb-86	Final Well History Report, Forecast Verification Report - North Triumph G-43 , Scotian Shelf
8641-11-S6-4-1- AC1 to AC4	24-Aug-83	Current Meter Data Analysis- Uniacke G-72 , Scotian Shelf

Program No.	Completion Date	Report Description
8641-11-S6-4-3- AC	30-Jul-86	Final Well History Report, Current Meter Data Report- Glenelg N-49 , Scotian Shelf
8641-11-S6-4-3- AF	4-Aug-86	Final Well History Report, Forecast Verification Report- Glenelg N-49 , Scotian Shelf
8641-11-S6-4-3- AM	4-Aug-86	Final Well History Report, Meteorological Summary Report - Glenelg N-49 , Scotian Shelf
8641-11-S6-4-3- AW	Nov-86	Final Well History Report, Wave Data Report- Glenelg N-49 , Scotian Shelf
8641-11-S6-4-4- AC	21-Sep-86	Final Well History Report, Current Meter Data Report- Panuke B-90 , Scotian Shelf
8641-11-S6-4-4- AF	24-Sep-86	Final Well History Report, Forecast Verification Report- Panuke B-90 , Scotian Shelf
8641-11-S6-4-4- AM	24-Sep-86	Final Well History Report, Meteorological Summary Report- Panuke B-90 , Scotian Shelf
8641-11-S6-4-4- AW	Nov-86	Final Well History Report, Wave Data Report- Panuke B-90 , Scotian Shelf
8641-11-S6-5-1- AFM	13-Jun-85	Physical Environmental Data Analysis, Final Report- Peskowesk A-99 , Scotian Shelf
8641-11-S6-5-2- AC	9-Aug-85	Current Meter Data Analysis, Final Report- Merigomish C-52 , Scotian Shelf
8641-11-S6-5-2- AFM	12-Aug-85	Physical Environmental Data Analysis, Final Report- Merigomish C-52 , Scotian Shelf
8641-11-S6-6-1- AFM	31-Jul-85	Physical Environmental Data Analysis, Final Report- Kegeshook G-67 , Scotian Shelf
NS41-S051-001DA	21-Sep-02	Characterization of Benthic Habitat in the Mahone Block Exploration Licences 2381 & 2382
8642-M003-008E	1982	Chemistry and Toxicity of the Venture Field condensates
8642-11-C4-1F- NXX-AS	1978	An Oil Spill Scenario for the Chevron Acadia Prospect- Acadia Prospect , Scotian Shelf
8643-M003-02E	1982	Venture E.I.S. Aesthetic Environment

4 Released Sample Reports

Program #	Completion Date	Report Description
SR1979-1	1979	Palynological Zonation and Correlation of Sixty-seven Wells, Eastern Canada
SR1983-1	Feb-83	Geotechnical Analyses of Core Samples From Davis Strait
SR1985-1	Apr-85	Potassium-Argon Age Determination, Ojibwa E-07
SR1985-2	Aug-85	Palynological Analysis of Conventional Core from Venture B-52 Well
SR1986-1	May-86	Matrix Density Study, South Venture O-59
SR1986-2	Dec-86	Vitrinite Reflectance of Coal Samples from Tyrone No. 1
SR1986-3	Dec-86	Vitrinite Reflectance of Coal Samples from Naufrage No. 1
SR1987-1	1987	Venture Field Porosity and Permeability Measurements
SR1988-1	Jan-88	Vitrinite Reflectance of Dispersed Organics from Venture B-13
SR1988-2	Jul-88	Biostratigraphic (Palynological) Studies of the West Chebucto K-20 Well
SR1988-3	Aug-88	Vitrinite Reflectance Data on Boreholes Cape Spencer #1 and Chinampas N-37
SR1988-4	May-88	Mesozoic-Cenozoic Foraminiferal, Ostracod and Calpionellid Zonation of the North Atlantic Margin of North America: Georges Bank-Scotian Basins and Northeastern Grand Banks Biostratigraphic Correlation of 51 Wells Open File # 1791
SR1989-1	Sep-89	Cretaceous Organic Facies and Oil Occurrence Scotian Shelf
SR1989-2	Nov-89	Biostratigraphy (Foraminifera and Ostracoda) and Depositional Environments of the Shelburne G-29 Well
SR1989-3	Jan.-00	Report on the Mesozoic Foraminiferal and Ostracode Biostratigraphy and Depositional Environments of Mobil et al. Arcadia J-16 Scotian Shelf), from 1,305 – 6,005 m (TD). Report No. M. RES. G-PAL. 1-200PA
SR1990-1	Jan-90	Vitrinite Reflectance of Dispersed Organics from Glenelg J-48 Open File #2293
SR1990-2	Dec-90	Organic Facies and Maturation of Sediments from S. Venture O-59 , Venture B-43 and Louisbourg J-47
SR1990-3	Dec-90	Characterization and Maturation of Selected Oil and Condensate Samples and Correlation with Source Beds, Scotian Shelf
SR1990-4	Jul-90	Vitrinite Reflectance of Dispersed Organics from Alma F-67 Open File #2289
SR1990-5	Mar-90	Evaluation of Organic Facies of Verrill Canyon Formation Sable Subbasin, Scotian Shelf

Program #	Completion Date	Report Description
SR1991-1	Mar-91	Vitrinite Reflectance of Dispersed Organics from Conventional Cores from Seven Scotian Shelf Wells Open File #2455 (Arcadia J-16, Louisbourg J-47, South Desbarres O-79, Venture B-52, West Chebucto K-20, West Venture C-62, West Venture N-91)
SR1991-2	Dec-91	Characterization and Maturation of Selected Cretaceous and Jurassic Source Rocks and Crude Oil, Scotian Shelf
SR1991-3	Jan-91	Vitrinite Reflectance of Dispersed Organics from Tantallon M-41 Open File #2381
SR1991-5	1991	Implications of apatite fission track analysis for the thermal history of the Scotian Basin offshore Nova Scotia, Canada (Thebaud I-94, West Olympia O-51, Cohasset A-52, Merigomish C-52, Kegeshook G-67, Eagle D-21)
SR1992-1	Mar-92	Vitrinite Reflectance of Dispersed Organics from Demascota G-32 Open File #2623
SR1992-2	Mar-92	Vitrinite Reflectance of Dispersed Organics from Panuke B-90 Open File #2622
SR1993-1	Feb-93	Vitrinite Reflectance of Dispersed Organics from Hebron I-13 Open File #2671
SR1993-2	Mar-93	Vitrinite Reflectance of Dispersed Organics from Bluenose 2G-47 Open File #2707
SR1993-3	Jun-93	A Maturation Framework for Jurassic Sediments in the Sable Subbasin, Offshore Nova Scotia. (Eagle C-21, Glenelg J-48, Venture D-23)
SR1993-4	Sep-93	Oil Correlation Summary with Appendix B-Ion Chromatograms for Representative Oils from the NS Basin. (Cohasset D-42, Penobscot L-30, Venture B-52, Alma F-67, Alma K-85)
SR1993-5	Feb-93	Analyses and Interpretation of Geochemical and Source Rock Data from Scotian Shelf Wells. (Cohasset A-52, Sable Island 3H-58, Venture B-52, South Desbarres O-76, North Triumph G-43, S.W. Banquereau F-34, Thebaud C-74)
SR1993-6	Mar-93	Vitrinite Reflectance of Dispersed Organics from South Desbarres O-76 Open File #2706
SR1994-1	Mar-94	Vitrinite Reflectance of Dispersed Organics from Eleven Scotian Shelf Wells Open File #2902. (Abenaki J-56, Alma F-67, Cohasset D-42, Cohasset L-97, Demascota G-32, N. Triumph B-52, N. Triumph G-43, Penobscot L-30, Uniacke G-72, Venture B-52, Venture H-22)
SR1994-2	Dec-94	Vitrinite Reflectance of Dispersed Organics from Thirteen Scotian Shelf Wells Open File #3115. (Bluenose 2G-47, Citadel H-52, Eagle D-21, Intrepid L-80, Merigomish C-52, N. Triumph B-52, Onondaga B-96, Sable Island C-67, South Desbarres O-76, South Venture O-59, Thebaud I-93, Venture D-23, Wenonah J-75)
SR1994-3	Oct-94	Preliminary Cenozoic Foraminiferal Biostratigraphy and Depositional Environments of Venture B-52

Program #	Completion Date	Report Description
SR1994-4	Jan-94	Organic Petrography and Kinetics of Limestone and Shale Source Rocks in Wells Adjacent to Sable Island, Nova Scotia and the Interpretation on Oil-Oil or Oil-Source Rock Correlation and Basin Modeling (50 wells)
SR1994-5	Jan-94	Cenozoic Micropaleontological Biostratigraphy of the LASMO/NSR(V)L Cohasset Producer CP1 P-51 Well, Scotian Shelf
SR1995-1	Sep-95	West Sable Exploration License Reservoir Quality Study Offshore Nova Scotia. (Thebaud C-74, Thebaud I-93, Migrant N-20, Alma F-67)
SR1995-2	Jul-95	Tertiary Molluscs of the Scotian Shelf, Atlantic Canada. (Cohasset CP1 P-51)
SR1996-2	Jun-97	Palynological Correlation of South Venture O-59 and Venture B-52 Wells
SR1997-3	Jun-97	Palynological Study of Selected Samples from 6 Wells in the Scotian Shelf Area (Evangeline H-98, Glenelg E-58, Tantallon M-41, Alma F-67, Chebucto K-90, and West Chebucto K-20)
SR1997-6	Dec-97	Assessment of Iroquois Oil Stains, Mohican I-100 and Moheida P-15 , Scotian Shelf
SR1998-5	Dec-99	Vitrinite Reflectance (Ro) of Dispersed Organics from Petro-Canada et al Shelburne G-29 Open File #3854
SR1998-5	Dec-99	Vitrinite Reflectance (Ro) of Dispersed Organics from Shell et al Shubenacadie H-100 Open File #3855
SR(P)1999-2	Dec-99	Eastern Canada Margin Oil Study (Alma K-85, Alma F-67, Glenelg E-58, Glenelg J-48, Glenelg J-49, Chebucto K-90, N. Triumph G-43, Panuke PP1, Panuke B-90, Intrepid L-80, Cohasset CP6B, Cohasset CP3A, Cohasset CP9, Cohasset CP4, Cohasset CP6, Cohasset D-42, Cohasset A-52, Balmoral M-32, Thebaud I-93 Thebaud C-74, South Sable B-44, Thebaud I-94, Thebaud P-84, Cohasset L-97, Sable Island O-47, Sable Island E-48, Sable Island H-58, Sable Island 2h-58, Sable Island 3H-58, S. Venture O-59, Primrose N-50, Primrose A-41, Olympia O-51, W. Venture C-62, Olympia A-12, Venture B-52, Venture H-22, Venture B-43, Arcadia J-16, Bluenose 2G-47, Citnalta I-59, Penobscot L-30, Banquereau C-21, Uniake G-72)
SR1999-3	May-99	Petrographic Study Scotian Shelf Logan Canyon Formation and Missisauga Formation (Alma K-85, Glenelg E-58, Glenelg J-48, Kegeshook G-67, Marmora P-35, Merigomish C-52, Panuke B-90, Thebaud I-93, W. Chebucto K-20)
SR1999-4 and SR1995-5	Mar-99 Apr-99	Geochemical Analysis of Well Cuttings from the Albatross B-13, Abenaki J-56 and Evangeline H-98 wells, Scotian Basin
SR1999-5	Apr-99	Geochemical Analysis of Well Cuttings from the Albatross B-13, Abenaki J-56, Evangeline H-98 wells, Scotian Basin
SR1999-13	Dec-02	Age of Basaltic Rocks Recovered from Drilling in the Davis Strait, Eastern Canada (Hekja O-71, Gjoa G-37)

Program #	Completion Date	Report Description
SR2000-A	Jun-00	Vitrinite Reflectance (Ro) of Dispersed Organics from Petro-Canada et al North Banquereau I-13 Open File #3897
SR2000-2	Jul-01	Biostratigraphic Correlation of Paleocene – TD Sections Alma F-67, Glenelg J-48, and N. Triumph G-43 Scotian Shelf Wells Offshore Eastern Canada
SR2000-3/3a	Aug-02	Dalhousie University fission Track Research Laboratory Report 2001-1: Apatite Fission Track Dating and Thermal Modeling of Reservoir Sands #1, #2, and #3 from the Venture -1, V-4, D-23, B-13, B-43, and H-22 wells, Venture Gas Field , Offshore Nova Scotia
SR2000-6	Aug-01	Geochemical Results of core samples from Various Scotian Shelf Wells. (Peskowesk A-99, Tantallon M-41, Louisbourg J-47, Citadel H-52, N. Banquereau C-21, Esperanto K-78, south Griffin J-13, Dauntless D-35)
SR2000-7	Dec-04	Sedimentology and Stratigraphy of an Ancient Progradational Terrigenous Clastic Shelf Margin, Missisauga Formation (Upper Jurassic-Lower Cretaceous), Offshore Nova Scotia, Canada PhD. Thesis, Author - Donald I. Cummings (Alma K-85, Alma F-67, W. Venture C-62, W. Venture N-91, Thebaud C-74, W. Olympia O-51, N. Triumph G-43, W. Chebucto F-20, Venture B-13, Venture B-52, Venture H-22, Kegeshook G-67, Panuke B-90, Glenelg E-58A, Thebaud I-93, Venture B-43, Glenelg N-49, Panuke F-99, Lawrence D-14, Sable Island C-67)
SR2000-10	Sep-01	Chemostratigraphy of selected intervals: Sable Island. (Thebaud I-93, Thebaud C-74, Thebaud 1, Thebaud 3, Thebaud 5)
SR2000-12	Sep-01	Biostratigraphy of the Interval 2150 – 4200m TD Shell Shubenacadie H-100
SR2000-13	Jan-01	Dielectric Constant Measurements of wells Thebaud I-93, Thebaud I-94, Shubenacadie H-100, Evangeline H-98, Shelburne G-29, and Tantallon M-41
SR2000-14	Aug-01	Geochemical analyses of selected samples for 11 wells, Fluid Inclusion Data, Geochem-TOC & Tock Eval (Glooscap C-63, Glenelg J-48, W. Chebucto K-20, Tantallon M-41, s. Griffin J-13, Dauntless D-35, Mohican I-100, Glooscap C-63, Iroquois J-17, Argo F-38, Adventure F-80).
SR2001-7	Oct-01	Rock Eval. Data (Acadia K-62, Adventure F-80, Erie D-26, Como P-21, Dover A-43, Demascota G-32, Eagle D-21, Primrose A-41)
SR2001-8	Oct-03	Report on an Examination of Volcanic and associated clasts in cuttings and drill core, wells (North Sydney) F-24 and (North Sydney) P-05
SR2001-9	Apr-02	West Sable SCAL Data – Sable Island 3H-58 and Sable Island 5H-58
SR2001-11	2004	Regional correlation of Mesozoic Palaeogene sequences across the Greenland-Canada boundary (Hekja O-71, Gjoa G-37, Raleigh N-18) Dinoflagellate cyst stratigraphy of the Raleigh N-18 well, Saglek Basin, Davis Strait, offshore eastern Canada

Program #	Completion Date	Report Description
SR2002-10	Feb-03	Lower Cretaceous Lithofacies and Petrology of Peskowesk A-99, and Dauntless D-35 Wells, Scotian Basin. (Honors thesis – Author: Janet Shannon)
SR2002-10A / SR2001-15A	2005	Electron microbe geochronology and chemical variation of detrital monazite from the Lower Cretaceous sandstones of the Scotian Basin and the Chaswood Formation, Eastern Canada. GSC open file 5023 (Alma K-85, Naskapi N-30, Peskowesk A-99)
SR2002-10B	2006	Depositional environment and provenance analysis of the Lower Cretaceous sedimentary rocks of the Peskowesk A-99 well. GSC Open File Report 5383
SR2002-10C	2009	Petrology and Mineralogy of Lower Cretaceous sedimentary rocks, Dauntless D-35 well, Scotian Shelf (GSC open file 6280) G.Pe-Piper and D.J.W. Piper
SR2003-3	Aug-03	Biostratigraphy of the Lower Cretaceous P Jurassic Strata in Five Wells Offshore Nova Scotia Nannofossil Slides (Received). (Demascota G-32, Glenelg J-48, Thebaud C-74, Cree E-36)
SR2003-5	Jun-03	Core laboratories Reservoir Fluids Report – Calgary TEC Analysis Panuke PI-1A, Panuke PI-1B
SR2003-7	Jan-03	Moblil et al. Arcadia J-16 Palynological analysis of the section between 3,905 m and 6,000 m
SR2004-1	Jul-04	Nova Scotian Shelf: Biostratigraphic and Sequence Stratigraphic Correlation of the Early Cretaceous Strata in Seven Wells (Annapolis G-24, Balvenie B-79, Louisbourg J-47, Southampton A-25, Tantallon M-41, West Chebucto K-20)
SR2005-7	Nov-07	Chlorite Diagenesis in Reservoir Sandstones of the Lower Missisauga Formation, Offshore Nova Scotia. Masters Thesis, Kathleen Gould. (Thebaud C-74, Venture 1, Venture 3, Venture 4)
SR2006-2	Jul-12	A Stratigraphic Reconstruction of Bulk Volatile Chemistry from Fluid Inclusions in Mohawk B-93 and Bonnet P-23
SR2006-7	Nov-06	Study of fluid inclusions in salt from Atlantic Canada (Summer Research Project – Evan T. Brown) Argo F-38, Adventure F-80
SR2006-13	Mar-08	Lower Cretaceous Lithofacies, Petrology, and Geochemistry of the North Triumph G-43 well, Scotian Basin (Honours Thesis, Heidi McKee, St. Mary's University)
SR(E)2007-7A	2008	Detrital zircons as provenance indicators in the Lower Cretaceous sedimentary rocks of the Scotian Basin, Eastern Canada: A SEM_CL study of textures. GSC Open file 5746
SR(E)2007-11	Apr-08	Lower Cretaceous Lithostratigraphy, Sedimentology, and Petrology of the Kegeshook G-67 well, Scotian Basin (Honours Thesis, James Foley, St. Mary's University)

5. RELEASED WELLSITE SURVEY REPORTS

Program No.	Completion Date	Report Description	Mylar (Y / N)
8626-B011-001E	16-Oct-83	Wellsite Survey Report for South Griffin J-13 , Banquereau Bank	Y
8626-B011-002E	18-Apr-84	Wellsite Survey Report for Hesper P-52 , Banquereau Bank	N
8626-B011-003E	3-May-84	Wellsite Survey Report for Griffin J-13 , Banquereau Bank	N
8626-C004-001E	8-Feb-78	Wellsite Survey Report for Acadia K-62 , Nova Scotia Continental Slope	N
NS26 (NF)-C004-01E x-ref NS24-S006-001E, 002E	15-Jun-01	Seabed Survey Reports for Newburn /Mahone Prospects	N
8626-C055-006E	22-Jul-86	Wellsite Survey Report for Whycocomagh N-90 Area	N
NS26-C146-001E	19-Dec-01	Wellsite Survey Report 2001 Marquis L-35 Drill Location	N
NS26-C146-003E	5-Aug-03	Wellsite Survey Report for Mariner I-85	N
NS26-C146-004E	19-Aug-04	Wellsite Survey Report for Mariner-2 L-54	N
NS26-E040-001E	3-Nov-02	Wellsite Survey Report for Cree I-34	N
NS26-E040-002E	19-May-02	Geotechnical data from the proposed location for the South Venture, Glenelg, Thebaud compression platforms and associated inter-field pipeline routes.	N
NS26-E043-001E x-ref. NS26-P003-005E x-ref NS26-P092-001E	18-May-02	Deep Panuke Pipeline Route Survey, Deep Panuke Development Final Report, Geophysical Program.	N
NS26-E043-002E	12-Oct-02	Wellsite Survey Report for MarCoh D-41 (Cohasset Site Survey)	N
NS26-E043-002E	12-Oct-02	Wellsite Survey Report for Margaree F-70	N
NS26-E043-002E	12-Oct-02	Wellsite Survey for Dominion F-14	N
NS26-E043-002E	12-Oct-02	Wellsite Survey for Baddeck I-07 (Lower Musquodoboit Site)	N
NS26 (NF)-E043-001E x-ref NS24-P003-04E	15-Jun-01	Wellsite Geophysical Study for Weymouth O-44 and P-44 (Relief), Weymouth Block, Scotian Slope	N
NS26 (NF)-E043-002E x-ref NS24-P003-02E	30-May-00	Wellsite Geophysical Study Torbrook C-15 – Scotian Slope	N
NS26 (NF)-E043-003E x-ref NS24-P003-04E	15-Jun-01	Wellsite Geophysical Study Weymouth A-45 Location (and O-44/P-44 Relief Locations)	N
NS26-E044-001E	27-Oct-02	Pipeline Route Survey for Blue Atlantic Transmission System – Environmental Program	N

Program No.	Completion Date	Report Description	Mylar (Y / N)
8626-H005-001E	6-Apr-84	Wellsite Survey Report for Citadel H-52 , Banquereau Bank	N
8626-H006-001E	8-Apr-83	Wellsite Survey Report for Glooscap C-63 , Western Bank	Y
8626-H006-002E	12-Oct-82	Wellsite Survey Report for South Sable / Evangeline areas	Y
8626-H006-003E x-ref 8626-S6-4E	23-Nov-83	Bathymetry Survey Report for Chebucto K-90 , Sable Island Bank, Scotian Shelf	N
8626-H006-009E	18-Jan-85	Seabed Investigation Survey for Beausejour Site , Sable Island Bank	N
8626-H006-010E	11-Oct-85	Seabed Investigation Survey for Chebucto Site , Sable Island Bank	N
8626-H007-001E	27-Aug-80	Wellsite Survey Report for East Point E-47 and Beaton Point F-70	N
8626-H007-003E	19-Feb-83	Wellsite Survey Report for East Sable O-47 , Banquereau Bank	N
NS26 (NF)-I003-01E x-ref NS24-V003-03P, x-ref S24-P003-04E	30-Jul-01	3D Geohazard Evaluation for Balvenie B-79	N
NS26-L023-001E	19-Mar-90	Wellsite Survey Report for Balmoral Site , Sable Island Bank	N
NS26-L023-001E	20-Mar-90	Wellsite Survey Report for Lawrence Site , Sable Island Bank	N
8626-M003-003E	22-Jan-80	Wellsite Survey Report for Venture D-42 and Venture G-12, East Bar, Sable Island	N
8626-M003-006E	24-Aug-80	Wellsite Survey Report for Thebaud K-93 , Sable Island Bank	N
8626-M003-006E	26-Aug-80	Wellsite Survey Report for Migrant J-2 , Sable Island Bank	N
8626-M003-006E	5-Aug-80	Wellsite Survey Report for Bluenose G-47A , Sable Island Bank	N
8626-M003-006E	22-Aug-80	Wellsite Survey Report for Venture NW , Sable Island Bank	N
8626-M003-012E	2-May-82	Wellsite Survey Report for Mariner D-25 , Sable Island Bank	N
8626-M003-013E	2-May-82	Wellsite Survey Report for Arcadia J-16 , Sable Island Bank	N
8626-M003-016E	3-Nov-82	Final Drilling Survey, West Olympia Prospect , Sable Island Bank	Y
8626-M003-023E	9-May-85	Shallow Seismic Surveys for NW Venture N-91 and Venture B-92	N
8626-M003-024E	26-Aug-87	Wellsite Survey Report for South Sable B-44 , Sable Island Bank	N
8626-M003-024E	26-Aug-87	Wellsite Survey Report for Adamant P-96 , Sable Island Bank	

Program No.	Completion Date	Report Description	Mylar (Y / N)
8626-M003-025E	26-Aug-87	Wellsite Survey Report for North Eagle B-54 , Sable Island Bank	N
NS26-M003-004E	30-Jan-96	Pipeline Survey – Sable Offshore Energy Project Pipeline Route Country Harbour to Thebaud and Venture	N
NS26-M003-006E	29-Oct-96	Final report Sable Offshore Energy Project 1996 Geophysical / Geotechnical Pipeline Route Survey Country Harbour to Thebaud and Venture	N
NS26-M003-007E	Jan-95	Wellsite Survey Report - North Triumph, Thebaud, Venture Geotechnical Investigation - Thebaud, Venture Site A-97-09, Sand Ridge Site A-97-09. West Venture Shallow Gas Survey	N
NS26-M003-009E	26-Nov-99	Wellsite Survey Report for Emma N-03 (Site "A")	N
NS26-M003-010E	22-Jul-00	Wellsite Survey Report for South Venture P-60	N
NS26-M003-010E	28-Jun-00	Wellsite Survey Report for Glenelg H-59	N
NS26-M003-010E	23-Jul-00	Wellsite Survey Report for Adamant N-97 and Pipeline Route Survey Report Alma to Thebaud	N
NS26 (NF) M055-001E x-ref NS24-V003-002P	18-Oct-00	Wellsite Survey Report for Crimson F-81	N
NS26-M055-001DA x-ref NS26-C142-001P	25-Sep-02	Characterization of Benthic Habitat in the Annapolis Block	N
NS26-P003-001E	12-Feb-98	Wellsite Survey Final Report Grand Pre-G-08	N
NS26-P003-02E	26-Jul-00	Wellsite Survey Report for Panuke H-08	N
NS26-P003-02E	26-Jul-00	Wellsite Survey Report for Panuke M-79	N
NS26-P003-002E	5-May-00	Wellsite Survey Report for Panuke F-09	N
NS26-P003-002E	May-00	Wellsite Survey Report for Queensland M-88	N
NS26-P003-003E	22-May-01	Wellsite Survey Report for Southampton West A-25	N
NS26-P003-003E	22-May-01	Wellsite Survey Report for Musquodoboit F-23	N
NS26-P003-004E	15-Jun-01	Wellsite Survey Geotechnical Report: Southampton A-25 Site E Jack Up Rig Foundation Analysis	N
NS26-P003-005E x-ref NS26-E043-001E	21-Oct-01	Deep Panuke Pipeline Route Survey Deep Panuke Development Final Report Geophysical Program	N
8626-P028-006E	2-Nov-81	Wellsite Survey for Banquereau Area, Site A , Scotian Shelf	Y
8626-P028-006E	15-Oct-81	Wellsite Survey for Banquereau Area, Site B , Scotian Shelf	Y
8626-P028-006E	15-Oct-81	Wellsite Survey for Banquereau Area, Site C , Scotian Shelf	Y

Program No.	Completion Date	Report Description	Mylar (Y / N)
8626-P028-006E	15-Oct-81	Wellsite Survey for Banquereau Area, Site D , Scotian Shelf	Y
8626-P028-007E	17-Jul-82	Wellsite Survey Report for West Esperanto , Banquereau Bank	Y
8626-P028-008E	2-Aug-82	Wellsite Survey for Banquereau Area, Site E , Banquereau Bank	Y
8626-P028-008E	1-Aug-82	Wellsite Survey for Banquereau I-13, Site F , Banquereau Bank	Y
8626-P028-008E	1-Aug-82	Wellsite Survey for Banquereau Area, Site G , Banquereau Bank	Y
8626-P028-008E	1-Aug-82	Wellsite Survey for Banquereau Area, Site H , Banquereau Bank	Y
8626-P028-009E	5-Aug-82	Wellsite Survey for Cabot Strait Area	Y
8626-P028-010E	20-Feb-83	Wellsite Survey for St. Paul P-91 , Gulf of St. Lawrence	N
8626-P028-011E	28-Oct-83	Wellsite Survey for Albatross G-02 (B-13) , Scotian Shelf	N
8626-P028-012E	9-Oct-83	Wellsite Survey for Bonnet P-23 , Scotian Shelf	N
8626-P028-013E	21-Oct-83	Wellsite Survey for Dover A-43 , Scotian Shelf	N
8626-P028-016E	13-Nov-84	Wellsite Survey for Shelburne , West Scotian Shelf	N
8626-P028-023E	25-Nov-85	Wellsite Survey for Cohasset A-52 , Sable Island Bank	N
NS26-P092-001E x-ref NS26-E043-001E	1-May-02	Deep Panuke Development Final Report Offshore Geotechnical Investigation	N
8626-S006-001E	21-Jul-80	Wellsite Survey for Aspen Site , South Acadia Block, Nova Scotia Contiental Slope	Y
8626-S006-001E	21-Jul-80	Wellsite Survey for Alder Site , South Acadia Block, Nova Scotia Contiental Slope	Y
8626-S006-003E	31-Oct-81	Wellsite Survey for SAOG Site , Nova Scotia Slope	Y
8626-S006-004E x-ref 8626-H6-3E	28-Oct-81	Shallow Gas Hazards Survey for Shawnee (Chebucto K-90), Nova Scotia	
8626-S006-004E	28-Oct-81	Shallow Gas Hazards Survey for N. Cheynne-1 and S. Cheynne-2 (Glenelg J-48) , Nova Scotia Shelf	Y
8626-S006-004E	28-Oct-81	Shallow Gas Hazards Survey for S. Onondaga , Nova Scotia Shelf	Y
8626-S006-005E	22-Jul-82	Wellsite Survey for Shubenacadie Site, East-South Acadia Block	N
8626-S006-006E	28-Jan-83	Wellsite Survey for Uniacke Site, Sable Island Bank	N
8626-S006-006E	29-Jan-83	Wellsite Survey for South Desbarres Site, Sable Island Bank	N

Program No.	Completion Date	Report Description	Mylar (Y / N)
8626-S006-007E	10-Jul-83	Wellsite Survey for Alma F-67 , Sable Island Bank	N
8626-S006-007E	10-Jul-83	Wellsite Survey for Glenelg E-58 Area, Sable Island Bank	N
8626-S006-008E	13-Dec-83	Wellsite Survey for Kegeshook , Sable Island Bank	N
8626-S006-008E	13-Dec-83	Wellsite Survey for DesBarres , Sable Island Bank	N
8626-S006-009E	21-Jan-85	Wellsite Survey Report for Como Site, Sable Island Bank	N
8626-S006-010E	21-Jan-85	Wellsite Survey Report for Tantallon Site, Sable Island Bank	N
8626-S006-011E	5-Jan-85	Wellsite Survey Report for Peskowesk A-99, Banquereau , Scotian Shelf	N
8626-S006-011E	21-Jan-85	Wellsite Survey Report for Wallubeck, Banquereau , Scotian Shelf	N
8626-S006-012E	27-Nov-84	Wellsite Survey Report for Merigomish C-52 / Alma K-85 , Sable Island Bank	N
8626-S006-013E	15-Jun-85	Wellsite Survey Report for Panuke Prospect	N
8626-S006-014E	10-Jun-85	Wellsite Survey Report for Tobeatic, Banquereau Bank	N
8626-S006-015E	4-Jun-85	Wellsite Survey Report for North Triumph Prospect	N
8626-S006-016E	27-Sep-85	Wellsite Survey Report for Glenelg N-49 Prospect	N
8626-S006-017E	5-Jun-88	Wellsite Survey Report for Penobscot B-21 and L-21 , Scotia Shelf, Sable Island Bank	N
NS26-S006-01DA x-ref NS26-M003-10E	12-May-02	Wellsite Survey Report, Onondaga B-84 site	N
8626-T007-001E	23-Nov-82	Wellsite Survey Report, Alpha Site Gulf of St Lawrence	N

6. RELEASED GEOPHYSICAL REPORTS

Program No.	Completion Date (dd/mm/yy)	Length (km)	Report Description	Mylar (Y/N)
8620-A004-005E	05-Aug-71	1,478.95	1971 Geophysical Survey-Gulf of St. Lawrence	N
8620-C004-002E	11-Oct-71	934.23	Summary of Exploration Offshore Misaine and Orpheus Banks Areas	N
8620-C004-005E	03-Aug-72	539.61	Summary of Exploration, Misaine and Browns Bank areas, East Coast Offshore	N
8620-C015-001P	30-Sep-71	5,231.06	1971 East Coast Marine Seismic Participation Survey, Labrador Shelf and Scotian Shelf	N
8620-C015-002P	14-Sep-72	717.12	1972 East Coast Marine Seismic Participation Survey, Labrador Shelf-Scotian Shelf	N
8620-C020-001E/002E	15-Oct-71	6,536.90	Report on Seismic, Gravity, & Magnetic Survey, Scotian Shelf Area	Y
8620-C039-001E	29-Nov-74	90.69	Marine Geophysical Survey for Chedabucto Bay Prospect	N
8620-G001-001E	23-Nov-73	1,883.52	Marine Geophysical Survey, West Newfoundland	N
8620-G005-001P	05-Nov-71	12,843.82	Seismic, Gravity & Magnetic Survey Offshore Nfld (Laurentian Channel / Grand Banks)	Y
8620-G005-004P	02-Dec-72	10,848.65	Final Report, East Coast Canada, Offshore Nova Scotia - Offshore Newfoundland Areas	Y
8620-H006-001E, 006E	26-Jul-82 19-Oct-82	735.85 669.76	Mohican Block E.A. 781-005 Scotia Shelf Report on 1982 Seismic Program	Y
8620-H006-002E	02-Jul-82	808.88	Chebucto E.A. 781-004 Scotia Shelf Report on 1982 Seismic Program	Y
8620-H006-003E	02-Jul-82	634.85	Geophysical Survey Yarmouth Block, Scotia Shelf	Y
8620-H006-007E	13-May-83	2,428.08	South Sable Island E.A. 146 Scotian Shelf Report on March-May 1983 Seismic Program	Y
8620-H006-008E	23-Nov-84	637.00	1984 Beasejour & Gully Chebucto Survey Type Reflection Marine Seismograph	Y
8620-H006-009E x-ref 8624-H006-010E	31-Aug-85	821.65	Chebucto-Sable Island Survey Type-Reflection Marine Seismograph	Y
8620-H007-001E x-ref 8624-H007-001E	07-Aug-68	2,280.86	Report on Magnetometer, Gravity Meter & Seismograph Surveys - Gulf of St. Lawrence 1967 & 1968	N

Program No.	Completion Date (dd/mm/yy)	Length (km)	Report Description	Mylar (Y/N)
8620-H007-002E	01-Dec-70	3,075.59	Report on Gravity, Magnetometer and Seismograph Surveys, Gulf of St. Lawrence	N
8620-H007-004E	12-Aug-71	588.53	Report on Sea Magnetometer and Seismograph Surveys, Gulf of St. Lawrence	N
8620-J001-001E	13-Oct-72	10,491.58	Report on Geophysical Surveys, Eastern Canada Offshore, Laurentian Cone and Orphan Areas	N
8620-J001-002E	01-Oct-73	4,421.22	Report on Geophysical Surveys, Orphan Block	N
8620-J001-002E	11-Sep-73	2,705.95	Report on Geophysical Surveys, North and South Labrador	N
8620-J001-002E	12-Oct-74	2,277.09	Report on Geophysical Surveys, Laurentian Fan	N
8620-J001-005E	29-Oct-75	903.22	1975 Seismic Program, Scotian Shelf	N
8620-J001-005E	08-Nov-75	1,081.45	Report of Geophysical Surveys Eastern Canada Offshore, Flemish Pass	N
8620-J001-005E	16-Nov-75	2,228.88	Report on 1975 Geophysical Surveys Eastern Canada Offshore - South Labrador	N
8620-J001-005E	07-Nov-74	2,285.68	Report of Geophysical Surveys (1974) Eastern Canada Offshore, Orphan Block North Flemish Cap	N
8620-J008-001E, 002E	23-Jul-83	4,693.48	Report on the Geophysical Survey, ICG Parks Offshore Exploration Partnership 1982-83 East & West Sable Island Areas	Y
8620-J008-007E	11-Jan-83	2,258.93	Report on the Geophysical Survey, ICG Parks Offshore Exploration Partnership 1982 Banquereau Area	Y
8620-M003-001E	17-Aug-60	1,324.00	Reflection and Refraction Seismograph Report, Sable Island	N
8620-M003-002E	16-Aug-63	1,651.14	Reflection and Refraction Seismograph Report, Sable Island	N
8620-M003-003E	25-May-66	334.73	Reflection Seismograph and Magnetic Survey	N
8620-M003-005E, 8620-M003-006E	25-Sep-67	4,102.11	Geophysical Report 1967 Operational Season on Grand Banks, Sable, Banquereau and Truxton Areas	N
8620-M003-007E, 8620-M003-008E	24-Sep-68	7,960.40	Geophysical Report 1968 Operational Season on Grand Banks, Sable Island, South Sable, Banquereau Bank, Truxton, and Bay of Fundy Areas	N

Program No.	Completion Date (dd/mm/yy)	Length (km)	Report Description	Mylar (Y/N)
8620-M003-009E, 8620-M003-010E x-ref 8624-M3-1E	25-Sep-69	9,311.40	Geophysical Report 1969 Operational Season on Sable Island, Banquereau, Truxton and Bay of Fundy Areas	Y
8620-M003-012E, 013E	17-Aug-72	N/A	Grand Banks & Scotian Shelf High Resolution Geophysical Survey & Sampling Project, Adventure, Bluenose & Hibernia Areas	N
8620-M003-014E	20-Apr-73	N/A	Marine Investigative Survey , Gaultois and Adventure Drilling Locations	N
8620-M003-015E	26-May-73	80.46	1973 Seismic & Gravity Survey, Sable Island Area	N
8620-M003-016E	22-Jun-73	484.39	Geophysical Survey, Sable Island Area	N
8620-M003-022E	12-Sep-74	523.02	Geophysical Survey on Citnalta, Intrepid and Venture Prospects	N
8620-M003-023E	28-Aug-74	400.71	Geophysical Report, South Sable Area	N
8620-M003-024E	13-Aug-74	719.35	Geophysical Report, Banquereau Bank Area	N
8620-M006-001E	10-Oct-70	1,402.60	Reflection Seismic Survey of a Part of Cabot Strait/Laurentian Channel, Offshore Cape Breton Island, Nova Scotia	Y
8620-M006-002E	27-Jun-72	806.30	Reflection Seismic Survey of a Part of Cabot Strait, Offshore Cape Breton Island, Nova Scotia	N
8620-M006-003E	01-Dec-74	166.96	Experimental Reflection Seismic Survey, Offshore Cape Breton Island	Y
8620-N011-001E	02-Jul-85	2,639.38	Final Report of Marine Seismic For Nova Scotia Resources on Scotian Shelf, Sable Island	Y
8620-S006-001E	02-Sep-64	2,162.89	Geophysical Report East Coast Offshore, 1964	N
8620-S006-002E x-ref 8620-S6-9E x-ref 8624-S6-9E	06-Oct-72	9,248.64	Geophysical Survey on Scotian Slope, South West Sable Island, Eagle, Primrose	N
8620-S006-009E x-ref 8620-S6-2E x-ref 8624-S6-9E	06-Oct-72	9,248.64	Geophysical Survey on Scotian Slope, South West Sable Island, Eagle, Primrose	N
8620-S014-001E	09-Dec-74	150.87	Geophysical Report on East Anticosti Island	N
8620-S014-002E	07-Dec-74	289.47	Geophysical Report on the Mecatina and Banc-Beauge, Gulf of St. Lawrence, Onshore PEI, Naufrage and East Point Areas	N
8620-S014-004E	15-Feb-75	3,411.07	Report on the Geophysical Exploration of Onshore PEI, Beaton Point, Northumberland , Miramichi & Baie Georges Areas	N

Program No.	Completion Date (dd/mm/yy)	Length (km)	Report Description	Mylar (Y/N)
8620-S014-006E	24-Jul-83	13,239.85	Marine Reflection Seismic Survey Over the Scotian Shelf Area (Including West Slope Area, West Banquereau, East Banquereau, Sable, and Scotia Basin)	Y
8620-S024-001P	31-Oct-72	5,857.77	1972 East Coast Marine Participation Survey Offshore Nova Scotia and Newfoundland (Grand Banks)	Y
8620-T007-001E	31-Jul-68	5,233.44	1968 Marine Gravity Meter and Magnetometer Survey, Magdalen Islands Area, Gulf of St. Lawrence.	
8620-T007-005E	29-Jul-71	408.41	Marine Vibroseis Survey, Cabot Strait	N
8620-T007-007E	22-Aug-73	2,228.88	Geophysical Survey Cabot Strait	N
8621C004-01E	17-Jan-67	2,575.00	Aeromagnetic and Summary of Seismic Exploration	N
8621-C055-002E	23-May-82	13,741.00	Report on Airborne Magnetometer Survey in the Scotia Shelf Area of Eastern Canada	N
NS21-G006-001P	15-Jul-99 10-Oct-99	20,244 71,348	Aeromagnetic Survey – Sable Sub-basin Laurentian Basin	N
8621-G014-001E	20-Nov-65	772.78	Aeromagnetic and Seismic Survey, Offshore Nova Scotia	N
8621-M003-001E	21-Sept-59 27-Nov-59	NA	Summary of Reconnaissance and Aeromagnetic Survey, Sable Island Area	N
NS21-S086-001E	15-Mar-99	15,500.00	Aeromagnetic Survey of Area Adjacent to Sable Island and Venture, Thebaud and North Triumph Jacked Installation Points	N
8623-S009-001E	22-Aug-73	NA	1973 Gravity Survey of the Offshore Yarmouth, Nova Scotia Area	N
8624-A004-004E	16-Nov-67	N/A	1967 Geophysical Seismograph Reflection Survey - Gulf of St. Lawrence	N
8624-A004-013E / 014E x-ref 8627-A004-014DA	08-Oct-72	1,124.25	1972 Seismic Survey Trade, Participation on the Scotian Shelf	N
8624-A004-015E	22-May-74	321.05	Report on 1974 Geophysical Activity, Scotian Shelf Area, Ranger West Acreage	N
8624-A004-018E	04-Jun-74	232.86	Report on 1974 Geophysical Activity, Scotian Shelf Area, 'Joe Phillips' Acreage	N
8624-A024-001E	18-Oct-76	135.98	Reflection Seismic Survey, West Sable Island Area	Y
8624-B004-001E	08-Oct-69	197.90	Reflection Seismic Marine Survey	N

Program No.	Completion Date (dd/mm/yy)	Length (km)	Report Description	Mylar (Y/N)
8624-B011-003E	05-Nov-82	2,270.07	Deep Reflection Seismic Program, North Abenaki	Y
8624-B011-004E	10-Jun-83	1,094.68	Deep Reflection Seismic Program, Sable Regional	Y
8624-B011-005E	13-Aug-83	1,082.03	Deep Reflection Seismic Program, East Banquereau Block	Y
8624-B011-006E x-ref 8624-B11-4E	13-Aug-83	750.85	Deep Reflection Seismic Program, North Abenaki	Y
8624-B011-007E	22-Apr-84	186.70	Deep Reflection Seismic Program over East Banquereau Block (South Sable III)	Y
8624-B011-008E	30-Oct-84	482.00	Deep Reflection Seismic Program over East Banquereau Block	Y
8624-C004-001E	03-Aug-69	1,287.44	Marine Seismograph Survey of the Blanc A, Green Bank Area	N
8624-C004-07E	21-Oct-80	1,535.95	Gulf of St. Lawrence 1980 Report on the Geophysical Survey	Y
8624-C004-009E	26-Jul-81	698.00	Report on Geophysical Survey, Northumberland Strait	Y
8624-C004-010E	10-Aug-81	970.00	Report on Geophysical Survey , Gulf of St. Lawrence	Y
8624-C004-013E	18-Jul-82	282.82	Report on Geophysical Survey , Gulf of St. Lawrence	N
8624-C004-014E	22-Jul-82	444.20	Report on Geophysical Survey, Northumberland Strait, Stanhope, Cape Tormentine and St. Georges Bay Areas	N
8624-C012-001E	06-Oct-71	1,460.70	Marine Seismic Reflection Survey in the Belle Island and Anticosti Island Areas of the Gulf of St. Lawrence	N
8624-C012-002E	12-Jul-71	511.78	Marine Seismic Reflection Survey off the Coast of Nova Scotia	N
8624-C015-001P	14-Oct-69	1,957.23	Gulf of St. Lawrence, Avalon and Scotian Shelf Marine Seismic Participation Survey	N
8624-C015-002P/004P	02-Oct-70	2,731.16	1970 East Coast Marine Seismic Participation Survey, Gulf of St. Lawrence, NFLD, and Nova Scotia Shelf	N
8624-C015-003P	13-Dec-70	1,711.87	Marine Seismic Reflection Participation Survey	N
8624-C020-001E	20-Sep-72	5,259.19	Report on Seismograph Survey, Nova Scotia Shelf	N
8624-C033-001E/002E	13-Oct-73	282.80	Marine Seismic Survey, Mohican and Primrose Prospects	N

Program No.	Completion Date (dd/mm/yy)	Length (km)	Report Description	Mylar (Y/N)
8624-C034-001E	24-Dec-69	465.08	Marine Vibroseis Survey in the Browns Bank Area	N
8624-C055-003E	01-Oct-82	1,439.10	Final Report on Seismic Survey, Sable Island Area	Y
8624-C055-004E	24-Jun-83	572.00	1983 Seismic Reflection Survey , Yarmouth Block (E.A. 262)	Y
8624-C055-007E	11-Jul-85	543.48	1985 Seismic Reflection Survey , Whycocomagh Block (E.A. 270)	Y
8624-D001-001P/002P	06-Oct-70 01-Dec--70	2,293.41	Seismic Survey, Canadian East Coast Offshore Canada	N
8624-D001-003P	20-Dec-71	3,432.09	Seismic Survey, Scotian Shelf and Grand Banks	N
8624-D001-004P	27-Jul-72	1,399.18	Seismic Survey in the Area of Scotian Shelf and Grand Banks	N
8624-D003-002E x-ref 8624-D9-2E	16-Jul-82	1,040.95	Reflection Seismic Program, East Sable Area	Y
8624-D004-001P	25-Sep-67	1,025.12	Regional Marine Vibroseis Survey, Gulf of St. Lawrence & Northern Atlantic	N
8624-D009-002E x-ref 8624-D3-2E x-ref 8624-D3-3E	16-Jul-82	1,040.95	Reflection Seismic Program, East Sable Area	Y
NS24-E040-001E	25-Oct-01	430 km ²	Marine 3D Seismic Reflection Survey – Cree	Y
NS24-E040-001E	06-Sep-01	245 km ²	Marine 3D Seismic Reflection Survey -Glenelg	Y
NS24-E040-001E	25-Sep-01	585 km ²	Marine 3D Seismic Reflection Survey –Eagle/Chebucto	Y
NS24-E043-001E	07-Jul-02	450.04 km ²	Marine 3D Survey, Scotian Shelf Survey Abenaki	Y
NS24-E043-002E	28-Jun-03	1766.77 km ²	3D Seismic Survey over Stonehouse	N
NS24-G001-001E	01-Oct-98	187.00	2D Marine Seismic Survey – St. Pierre / Miquelon	Y
NS24-G001-002E	04-Aug-01	399.60	2001 East Laurentian 2D Seismic Report – Final	N
8624-G005-006P	01-Oct-82	569.97	Speculative Survey, Gulf of St Lawrence, Scotian Shelf, Cabot Strait	Y
8624-G005-007P	05-Apr-84	1,895.65	Final Report Nova Scotia 1984 Geophysical Survey	Y
8624-G005-008P	28-Jan-84	1,044.50	Onondaga 3D Reconnaissance Survey, Sable Island	Y
8624-G005-010P	22-Oct-83	35.00	Gulf of St. Lawrence - experimental lines	N

Program No.	Completion Date (dd/mm/yy)	Length (km)	Report Description	Mylar (Y/N)
NS24-G005-001P xref NS24-G005-002P	10-Apr-99	14,722.23	2D Non-exclusive Seismic Survey, Barrington	Y
NS24-G005-002P	8-Aug-00	9,678.00	2D Seismic Survey, Barrington	Y
NS24-G005-003P	1-Dec-2000	2,107.90	2D Survey, Laurentian Channel	Y
8624-G022-001E, 2E	24-Oct-1983	1,044.00	Marine Seismic Reflection Survey, Gulf of St. Lawrence, North Shore	
NS24-G026-001E	19-Aug-98	120.00	1998 2D Marine Seismic, Scotian Shelf, South of Sable.	N
NS24-G026-001P	19-Oct-98	7,107.80	2D Deep Water Scotian Shelf.	N
NS24-G065-001P	29-Oct-99	25,006.38	Marine Seismic Survey, Deep Water 2D East-South East Sable Island	Y
8624-H005-001E	19-Aug-83	528.85	1983 Seismic Survey, East Sable Area, Louisbourg and Citadel Structures	Y
8624-H005-002E	31-Oct-84	86.00	1984 Seismic Survey, East Sable Area	Y
8624-H006-004E	10-Jun-83	448.43	Geophysical Survey, Chebucto Block (E.A. 781-004), Scotian Shelf	Y
8624-H006-005E	13-Aug-83	544.65	Geophysical Survey, South Sable II (E.A. 146), Scotian Shelf	Y
8624-H006-007E	03-May-84	276.00	Report on 1984 Seismic Program South Sable III (E.A. 146)	Y
8624-H006-008E	03-May-84	478.00	Report on 1984 Seismic Program , Gully block (E.A. 146)	Y
8624-H006-010E	14-Sep-85	2,684.79	Reflection Marine Seismograph, South Sable 3D Survey , Chebucto Area	Y
8624-H007-001E x-ref 8620-H6-9E	31-Aug-67	2,044.77	Report on Magnetometer, Gravity Meter, and Seismograph Surveys, Gulf of St. Lawrence in 1967 and 1968	N
8624-H007-003E	04-Jul-72	83.68	Report on Seismograph Surveys, Gulf of St. Lawrence, around P. E. I.	N
8624-H007-003E	04-Jul-72	524.26	Marine Vibroseis Survey, P.E. I.	N
8624-H007-006E	18-Nov-73	125.52	Marine Seismograph Survey, Offshore P. E. I.	N
8624-H007-010E	22-Aug-81	1,134.78	Marine Seismic Survey, East Sable Prospect	N
NS24-J014-001P	5-Sep-98	2,011.90	1998 Survey Processing Report, Scotian Shelf East	Y
8624-L023-001E (NS24-L023-001E)	06-Nov-89	503.05	Reflection Seismic Report, East Coast 2D Seismic Survey, Scotia Shelf	Y

Program No.	Completion Date (dd/mm/yy)	Length (km)	Report Description	Mylar (Y/N)
NS24-L023-002E	06-Jul-90	106.70 km ²	Reflection Seismic Report, Panuke 3D Seismic Survey, Scotian Shelf	Y
NS24-L023-003E	16-Jun-90	43.98	Reflection Seismic Report, East Coast 90 Seismic Survey, Scotian Shelf	Y
NS24-L023-004E	28-Aug-91	49.73 km ²	Reflection Seismic Report, Musquodobiot 3D Seismic Survey, Scotian Shelf	Y
NS24-L023-004E	03-Sep-91	326.28	Reflection Seismic Report, South Panuke 2D Seismic Survey	Y
8624-M003-002E, 003E	09-Oct-70	5,574.10	Geophysical Report on Banquereau Bank, Sable Island, and Grand Banks	Y
8624-M003-004E	06-Sep-71	1,786.32	Geophysical Report in the Sable, South Sable and Banquereau Areas	Y
8624-M003-007E	22-Nov-71	906.03	Geophysical Report on St. Georges Bay Area	N
8624-M003-010E	12-Aug-72	444.18	Geophysical Survey, Sable Island Area	N
8624-M003-011E	17-Jul-72	1,308.86	1972 Geophysical Report, South Sable Island	N
8624-M003-012E	14-Jun-72	510.15	1972 Geophysical Report, Banquereau Bank	N
8624-M003-014E	20-Jun-1973 8-Sep-1973	1,923.17	1973 Geophysical Report, South Sable Island	N
8624-M003-015E	27-Aug-73	154.49	1972 Geophysical Report, Sable Island	N
8624-M003-016E x-ref 8624-M7-14E	26-Aug-73	962.36	1972 Geophysical Report, Banquereau Bank	N
8624-M003-019E	05-Sep-73	495.66	1973 Seismic and Gravity Report contained in 8620-M3-15E	Y
8624-M003-020E	13-Nov-73	205.99	Geophysical Report-Scotian Shelf-West Sable, Cree E-35 & Demascota G-32 Areas	N
8624-M003-021E x-ref 8624-M3-16E	09-Nov-73	86.71	Geophysical Report, Banquereau Bank	N
8624-M003-022E x-ref 8620-M3-15E	13-Nov-73	173.73	Geophysical Report, Sable Island	N
8624-M003-023E x-ref 8624-M3-16E	11-Nov-73	509.22	Geophysical Report, Banquereau Bank	N
8624-M003-024E	26-Jun-75	323.63	Geophysical Report, South Banquereau	N
8624-M003-025E x-ref 8624-M3-24E	15-Jun-75	345.03	Geophysical Report, Sable Island	Y
8624-M003-030E	27-Jun-77	260.00	Geophysical Report, Sable Island Area	Y
8624-M003-033E	22-Jul-79	1,261.63	Marine Seismic Report, Sable Island Area	Y

Program No.	Completion Date (dd/mm/yy)	Length (km)	Report Description	Mylar (Y/N)
8624-M003-035E	22-Sep-80	1,527.29	1980 Marine Geophysical Survey, Sable Island Area	Y
8624-M003-041E	29-Jun-81	1,755.95	Marine Seismic Survey, East Banquereau Area	N
8624-M003-044E x-ref 8624-M3-45E	14-Aug-82	1,421.88	2D Marine Geophysical Survey, Sable Island Area	Y
8624-M003-045E	08-Aug-82	281.25	Broadside and Experimental Seismic Programs, Sable Island	Y
8624-M003-047E	13-Aug-83	1,252.28	1983 2D Marine Seismic Survey, East Sable Island Area	Y
8624-M003-049E	17-Aug-84	2,456.45	1984 Marine Seismic Survey, Sable Island Area	Y
NS24-M003-001E	31-Aug-90	97.03	Geophysical Report of 2D Marine Seismic Survey, Sable Island Area	Y
NS24-M003-002E	24-Jul-91	1,273.38	Geophysical Report of 2D Marine Seismic Survey, Sable Island Area	Y
NS24-M003-003E	25-Aug-96	262.77km ²	Canada-Nova Scotia Sable Area 3D Ocean Bottom Cable Reflection Program 1996 (Venture)	Y
NS24-M003-003E	29-Oct-96	283.89km ²	Canada-Nova Scotia Sable Area 3D Ocean Bottom Cable Reflection Program 1996 (Thebaud)	Y
NS24-M003-06E	16-Jun-97	318 km ²	Geophysical Report for 1997 (North Triumph 3D)	N
NS24-M003-06E	18-Sep-97	276 km ²	Geophysical Report for 1997 (Alma, 3D)	N
NS24-M003-06E	18-Sep-97	506 km ²	Geophysical Report for 1997 (EL 2356 Seismic Program, 3D)	N
NS24-M003-07E	1-Jun-98 6-Sept-98	1440 km ²	Geophysical Final Report for 3D Marine Seismic Survey Program (Marmora, South Sable & Arcadia)	Y
NS24-M003-09E	11-Nov-99	263 km ²	3D OBC Seismic Survey – Sable Area 1999	Y
NS24-M003-010E	08-Jun-99	551.7 km ²	Intrepid Marine 3D Seismic Survey Program 1999	Y
8624-M006-001E	21-Jun-71	519.70	Reflection Seismic Survey, Cabot Strait, Offshore Cape Breton Island	N
8624-M006-002E	10-May-75	33.75	Experimental Reflection Seismic Survey, Offshore Cape Breton Island	Y
NS24-M055-001E	15-Oct-03	2259.00 km ²	Cortland-Empire 3D Prospect, S.E. Sable Island	Y
8624-N005-001E	22-Sep-82	1,130.15	Report of 1982 Marine Seismic Survey, North Sable Island Area	Y

Program No.	Completion Date (dd/mm/yy)	Length (km)	Report Description	Mylar (Y/N)
8624-N005-002E	05-Jun-83	821.28	1983 Final Report on Reconnaissance Seismic Reflection Survey, Sable Island Area	Y
NS24-N011-001E	08-Jul-92	1,691.10	Final Report on the 3D Seismic Survey on Penobscot E. L. 2353, Offshore Nova Scotia	Y
8624-O011-001E	04-Sep-81	832.00	1981 Final Geophysical Report, Scotian Shelf Seismic Program	N
NS24-P003-002E	30-May-00	1925.68 km ²	3D Marine Geophysical Survey, Huckleberry	N
NS24-P003-002E	09-Aug-00	369.57 km ²	3D Marine Geophysical Survey, Torbrook	N
NS24-P003-003E	26-Sep-00	2,833.73	2D Marine Survey, The Dales, Scotian Shelf	Y
NS24-P003-004E	27-Jun-01 31-Jul-01	1138.9 km ²	Barrington 3D Acquisition & 3D Seismic Survey Weymouth 3D Acquisition & 3D Seismic Survey	Y
8624-P028-001E	21-Oct-77	394.45	Marine Geophysical Survey, Western Shelf, Albatross	Y
8624-P028-002E	28-Jun-78	1,117.05	Final Report on Marine Geophysical Survey, Shelburne	Y
8624-P028-015E	23-Feb-81	1,100.30	1981 Marine Reflection Seismic, Gravity & Magnetic Survey, Banquereau Prospect	N
8624-P028-025E	10-Dec-81	1,460.78	Marine Reflection Seismic, Gravity & Magnetic Survey, Cabot Strait Offshore Nova Scotia and Newfoundland	Y
8624-P028-028E	22-Sep-81	570.40	Marine Reflection Seismic, Gravity & Magnetic Survey-Banquereau Area	Y
8624-P028-029E	28-Mar-82	2,867.53	Marine Reflection Seismic, Gravity & Magnetic Survey, North Sable & North Abenaki	Y
8624-P028-030E	24-Dec-81	700.00	Marine Reflection Seismic, Gravity & Magnetic Survey, Orpheus Area	Y
8624-P028-034E x-ref 8624-P28-51E	25-May-82	1,084.33	Marine Reflection Seismic, Gravity & Magnetic Survey, Western Scotian Shelf	Y
8624-P028-035E	06-May-82	320.13	1982 Marine Reflection Seismic, Gravity & Magnetic Survey, Cabot Strait	Y
8624-P028-036E	06-Jun-82	528.90	Marine Reflection Seismic, Gravity & Magnetic Survey-Banquereau Area	Y
8624-P028-046E	27-Sep-82	2,007.38	1982 Marine Reflection Seismic, Gravity & Magnetic Survey, East Banquereau	Y
8624-P028-049E	12-Nov-82	2,024.13	Final Report-Mohican Basin, Scotian Shelf	Y
8624-P028-050E	26-Oct-82	443.90	1982 Marine Reflection Seismic, Gravity & Magnetic Survey, Albatross	Y

Program No.	Completion Date (dd/mm/yy)	Length (km)	Report Description	Mylar (Y/N)
8624-P028-051E x-ref 8624-P28-34E	23-Nov-82	599.80	Marine Reflection Seismic, Gravity & Magnetic Survey, Western Scotian Shelf	Y
8624-P028-054E, 055E	28-Oct-82	57.53	Marine Seismic Report, Banquereau/Orphan East	N
8624-P028-056E	19-Feb-83	210.33	1983 Marine Reflection Seismic, Gravity & Magnetic Survey, St. Paul, Cabot Strait, Nova Scotia and Newfoundland	Y
8624-P028-057E	07-Aug-83	325.93	1983 Marine Reflection Seismic, Gravity & Magnetic Survey-Sydney Basin	Y
8624-P028-060E	11-Sep-83	573.43	1983 Marine Reflection Seismic, Gravity & Magnetic Survey, Bonnet Prospect	Y
8624-P028-068E	20-Nov-83	416.00	1983 Marine Reflection Seismic, Gravity & Magnetic Survey, Orpheus Area	Y
8624-P028-069E	19-Apr-84	358.50	1984 Marine Reflection Seismic, Gravity & Magnetic Survey, Western Scotian Shelf	Y
8624-P028-071E	08-Mar-85	1,295.00	Geophysical Program Report of Air, Gun Marine Reflection Seismic, Gravity & Magnetic Survey-Mohican Basin Area	Y
8624-P028-072E	29-May-85	1,498.53	1982 Marine Reflection Seismic, Gravity & Magnetic Survey-Regional Offshore Nova Scotia	Y
8624-P028-073E	21-Apr-85	1,198.08	1985 Marine Reflection Seismic, Gravity & Magnetic Survey, North Sable Area	Y
8624-P028-084E (3D)	01-Aug-86	613.37	1986 Cohasset Seismic Survey 3D, West Sable Island Area	Y
8624-S001-001E	20-Jun-71	276.01	Final Report on the Marine Seismic Survey-Burgeo Bank	N
8624-S006-001E	01-Sep-64	2,460.62	Regional Seismic Survey, Scotian Shelf	N
8624-S006-003E x-ref 8624-S6-4E	28-Aug-68	2,930.53	Geophysical Report- East Coast Offshore Nova Scotia 1968-1969	N
8624-S006-004E x-ref 8624-S6-3E	25-Sep-69	6,865.27	Geophysical Report, East Coast Offshore Nova Scotia 1968-1969	N
8624-S006-005E, 006E	12-Mar-70 13-Oct-70	683.95 14721.87	1970 Geophysical Report, Scotia Shelf, Wyandot, Ojibwa, Abenaki, Iroquois, Huron, Cree and Argo Areas	N
8624-S006-008E	20-Aug-71	9,116.68	1971 Geophysical Report, Scotia Shelf-Chippewa, Huron, Mohican and Sauk	N

Program No.	Completion Date (dd/mm/yy)	Length (km)	Report Description	Mylar (Y/N)
8624-S006-009E x-ref 8620-S6-9E x-ref 8620-S6-2E	06-Oct-72	9,248.60	Geophysical Survey on Scotian Slope, South West Sable Island, Eagle, & Primrose	N
8624-S006-011E	23-Oct-73	877.06	Geophysical Progress Report, Gulf of St. Lawrence	N
8624-S006-012E	02-Aug-73	8,548.60	1973 Geophysical Report, Onondaga, Oneida, Wenonah, Hawkeye, Dolphin & Carbonate Edge	N
8624-S006-015E	22-Oct-73	90.12	Geophysical Report on a Seismic Survey off Western Newfoundland	Y
8624-S006-018E	03-Jul-75	32.19	Marine Seismic Survey, Scotian Block East Coast Offshore 1975	N
8624-S006-020E	31-Jul-76	1,369.35	Seismic Survey, East Coast Offshore, Slope 32, Moheida, South Sable, Wenonah, Onondaga & Albatross	Y
8624-S006-022E	04-Nov-76	318.70	Geophysical Progress Report East Coast Offshore 1976	Y
8624-S006-023E x-ref 8624-S6-27E	01-Aug-80	3,003.00	Reflection Seismic Report, North and South Sable Area, Offshore Nova Scotia	Y
8624-S006-025E, 26E	26-Jan81 17-Jan-81	400.57 725.5	Final Reflection Seismic Report on Western Slope and South Acadia Areas	N
8624-S006-027E x-ref 8624-S6-23E	15-Sep-81	2,353.00	Reflection Seismic Programm in South Sable Area, Offshore Nova Scotia	Y
8624-S006-028E, 031E	31-Aug-81	2,447.87	Reflection Seismic Progress Report, South Acadia, Panasonic, E. Panasonic and Python	N
8624-S006-032E	19-Oct-82	5,716.72	Reflection Seismic Program, Brown's Bank, Medway, South Acadia, Mira Bay, Glace Bay, Tor Bay and Python Areas on the Slope	Y
8624-S006-033E x-ref 8624-S6-27E	26-Oct-82	4,832.36	Reflection Seismic Final Report, North and South Sable Areas	Y
8624-S006-035E	26-May-83	2,081.20	Reflection Seismic Final Report, Panasonic, Glace Bay and East Panasonic Areas	Y
8624-S006-036E	22-Jun-83	686.03	Reflection Seismic in Brown's Bank, South Acadia and Mira Bay Areas	Y
8624-S006-037E	27-Jul-83	3,750.14	Reflection Seismic in Hawkeye, Mulgrave, Lunenburg, Glenelg and Triumph Areas	Y
8624-S006-038E	12-Sep-83	438.00	Reflection Seismic in Banquereau, Python and Acadia Areas	Y
8624-S006-041E	27-Jul-85	10,469.75	Final Report on 1984/85/86 Seismic Processing, Nova Scotia Shelf Glenelg Area 3D Seismic Survey	Y

Program No.	Completion Date (dd/mm/yy)	Length (km)	Report Description	Mylar (Y/N)
8624-S006-042E	28-Sep-84	674.00	Reflection Seismic Final Report, Nova Scotia Offshore Slope, Panasonic and Browns Bank Areas	Y
8624-S006-043E	08-Sep-84	2,556.40	Final Report on 1984 Seismic Nova Scotia Shelf, North and South Sable Areas	Y
8624-S006-045E	17-Dec-84	320.50	Final Report on 1984 Seismic Aquisition, Banquereau	Y
8624-S006-046E	16-Apr-85	390.10	Final Report on the Como-Panuke Survey 1985	Y
8624-S006-047E	06-Oct-85	167.63	Final Report on 1985 Seismic Aquisition, Nova Scotia Slope	Y
8624-S006-048E	04-Oct-85	1,930.00	Final Report on 1985 Seismic Aquisition, Nova Scotia Shelf	Y
8624-S006-050E	29-Jun-87	195.21	Final Report on 1987 Seismic Aquisition, Nova Scotia Shelf	N
NS24-S006-001E / 002E	15-Jun-01	14,088.30	3D Thrumcap Survey Geophysical Report	Y
8624-S009-001E	14-Oct-74	1,455.06	1974 Offshore Seismic Survey of the Yarmouth Block S.W. Nova Scotia	N
8624-S014-001E	27-Jul-71	2,454.18	Marine Vibroseis Report , Gulf of St. Lawrence	Y
8624-S014-002E	3-Dec-70	1,752.25	Marine Vibroseis Report in Estuary, Gulf of St. Lawrence and Bay of Chaleur	N
8624-S014-003E	29-Oct-72	776.18	Report on the Geophysical Work of the Bradelle Project for SOQUIP	N
8624-S014-004E	29-Oct-72	86.45	Report on the Geophysical Work Relative to the Magdalen Islands Project	N
8624-S014-005E	14-Dec-74	283.72	Geophysical Report, Magdalen, Block B	N
8624-S014-008E	07-Jul-81	3,118.03	Geophysical Report for 1980-81 Seismic Survey, Gulf of St. Lawrence	Y
8624-S014-009E	03-Jul-81	182.58	Geophysical Report for the 1981 Reflcction Seismic Survey, Gulf of St. Lawrence	N
8624-S014-010E	12-Jun-81	402.00	Seismic Survey 1981, Gulf of St. Lawrence	N
8624-S014-011E	23-Jul-81	1,087.48	Final Report on Marine Seismic Survey, Bane Beauge & Mecatina Areas	N
8624-S014-012E	26-Jul-82	1,046.55	Geophysical Report for the 1982 Seismic Survey, Gulf of St. Lawrence	Y
8624-S014-013E	15-Sep-82	3,332.39	Geophysical Report for the 1982 Seismic Survey	Y

Program No.	Completion Date (dd/mm/yy)	Length (km)	Report Description	Mylar (Y/N)
8624-S014-014E	20-Dec-82	345.60	Geophysical Report for the 1982 Seismic Survey, Gulf of St. Lawrence	Y
8624-T007-002E	01-Sep-67	804.65	Marine Digital Seismic Survey, Gulf of St. Lawrence	N
8624-T007-003E	02-Oct-69	2,724.24	Marine Vibroseis Survey, Gulf of St. Lawrence 1969	N
8624-T007-004E	12-Oct-69	627.56	1969 Marine Vibroseis Survey, Cabot Strait	N
8624-T007-006E	14-Oct-70	1,134.25	Marine Vibroseis Survey, Cabot Strait	N
8624-T007-007E	23-Sep-70	405.89	Marine Vibroseis Survey, Gulf of St. Lawrence	N
8624-T007-011E	26-Nov-74	1,566.38	Cabot Strait Geophysical Survey	N
8624-T013-001E	24-Oct-70	581.63	Marine Vibroseis Survey , LaHave Basin and Gulf of Maine	N
8624-T013-002E	05-Dec-73	382.41	Final Report on the Burgeo Bank, Marine Seismic Survey	N
8624-T021-004E	18-Jun-78	251.48	Final Report, Shelburne	Y
8624-T021-006E	28-Nov-80	426.23	Final Report, West Albatross, Western Scotian Shelf	Y
8624-T021-008E	07-Jul-81	410.00	Albatross, Scotian Shelf 1981 Seismic Survey	Y
8624-V001-001E	22-Oct-70	90.12	Report on Marine Seismic Survey Conducted October 1971, The Rich Point Straits of Belle Isle Area	N
8624-W013-001P	01-Aug-83	3,910.21	Final Report on Marine Seismic Survey of East Coast Canada, Nova Scotia Area 1983	Y
8624-W013-002P	01-Sep-84	1,103.50	1984 Marine Speculative Survey, Sable Island	Y
8624-W013-005P	12-Mar-85	2,057.29	Final Report Marine Seismic Survey of East Coast Canada, Nova Scotia Area 1985	Y
NS24-W013-001P	5-Oct-98	11,587	Nova Scotia 2000- 2D Seismic Survey	N
NS24-W013-002P	27-Nov-99	4,163.9 km ²	Nova Scotia 2000 - 3D Seismic Survey	N
NS24-W013-003P	20-May-00	158.22 km ²	Nova Scotia 200- 3D Seismic Survey	N
8625-M003-001E	26-Aug-71	N/A	Geophysical Report Refraction Survey, TECTO Sable Island E-48	N
8625-S006-001E	29-Apr-73	148.22	Geophysical Report East Coast Nova Scotia	N

Program No.	Completion Date (dd/mm/yy)	Length (km)	Report Description	Mylar (Y/N)
8625-S006-002E	26-Feb-73	34.04	Geophysical Report East Coast Nova Scotia	N
8627-A004-016DA	Apr-76	N/A	Geophysical Interpretation Report, Gulf of St. Lawrence	
8627-A014-002P xref 8627-C022-02DA	1974	N/A	Geophysical & Geological Setting of Permits; Gulf of St. Lawrence & Orpheus Anomaly East Coast Area	N
8627-C004-002DA	Jul-71	2,364.37	Summary of Exploration Misaine & Orpheus Banks Marine Seismic Program 1970	N
8627-C004-003DA	Jul-71	297.24	Summary of Exploration Anticosti Island Marine Seismic Program 1970	N
8627-C004-08DA	02-Oct-70	297.24	Summary of Exploration Offshore Anticosti Island	N
8627-C022-002DA xref 8624-C014-002P	1974	N/A	Geophysical & Geological Setting of Permits; Gulf of St. Lawrence & Orpheus Anomaly East Coast Offshore	N
8627-D003-001E	Mar-84	204.05	Final Report, Northumberland Area 1983 Seismic Reprocessing	Y
NS27-D031-001DA xref 8624-G005-002P 8620-S014-006E	1999	1,730.00	Evaluation of EL2388, Scotian Basin, Offshore Nova Scotia	
8627-G001-001DA	15-Mar-71	1,383.99	Marine Reflection Seismic Interpretation	N
8627-G001-002DA	23-Mar-77	328.29	Final Geophysical Report, Gulf of St. Lawrence	N
8627-H007-001DA 8627-A014-002P	1974	N/A	Geophysical & Geological Setting of Permits; Gulf of St. Lawrence & Orpheus Anomaly East Coast Offshore	N
8627-H007-002E xref 8624-H007-003E	09-Sep-1974	1,146.50	Reprocessing and Interpretation of a Geophysical Survey - Gulf of St. Lawrence	N
8627-J001-002E	1977	N/A	Reprocessing Report on Geophysical Data 1976-77 - Orphan Knoll	N
8627-M003-001DA	Dec-70	N/A	Geophysical Interpretation, Catalina Data	N
8627-M003-002DA	29-Sep-71	N/A	Geophysical Interpretation, Catalina Exploration	N
8627-M003-010DA	Sep-73	N/A	Geophysical Interpretation, East Coast Offshore	N
8627-M006-001DA x-ref 8624-D004-001P	03-Mar-70	N/A	Analysis of Vibroseis in Gulf of St Lawrence & Sydney Basin	N
8627-M006-003DT x-ref 8620-M6-1E	10-Oct-70	1,402.62	1971 Gravity and Magnetic Results (Data Aquisition) Offshore Cape Breton	N

Program No.	Completion Date (dd/mm/yy)	Length (km)	Report Description	Mylar (Y/N)
8627-M006-004DA	May-72	901.21	Interpretation of Seismic Data from the Orpheus Basin	N
8627-M006-005DT	10-Jul-73	337.95	Interpretation of Seismic Data from the Orpheus Basin	N
8627-M006-006E	01-May-76	N/A	1975 Experimental Data Processing, Cabot Strait	N
NS27-M055-001DA xref NS24-V003-003P NS24-M055-001E	31-Dec-03	N/A	3D Reprocessing Report, Annapolis	Y
8627-P011-002DA, 003DA	03-Nov-72	2,413.95	Marine Reflection Survey, Scotian Shelf	N
8627-P028-001DA	Nov-79	804.65	Interpretation of Seismic Data, Western Shelf and Acadia Areas	N
8627-S003-001DA, 002DA	Nov-71	522.01	Geophysical Progress Report, East Coast Offshore Nova Scotia 1971	N
8627-S006-004DA x-ref 8620-G5-1P	23-Feb-72	593.83	Geophysical Progress Report, East Coast Offshore Nova Scotia 1972	N
8627-S006-014DA	Jul-73	838.56	Geophysical Progress Report, East Coast Offshore Nova Scotia 1973	N
8627-S006-016E	Apr-75	4,551.10	Geophysical Progress Report, East Coast Offshore Nova Scotia 1974	N
8627-S006-018E	30-Jan-76	2,155.98	Geophysical Progress Report, East Coast Offshore Nova Scotia 1975	Y
8627-S006-021E	15-Jun-77	321.97	Geophysical Progress Report, Seismic Reprocessing, Albatross 1976	N
8627-S008-001DA	Aug-72	1,343.77	East Coast Marine Seismic Participation Survey	N
8627-T007-002DA	31-Dec-70	836.84	Scotian Shelf Project Nova Scotia Canada	N
8627-T007-011DA	Nov-75	836.84	Project Report on Seismic Purchase, Scotian Shelf	N
8627-T021-001DA	03-Mar-78	442.56	1977 Work Report, West Albatross	N
8627-T036-001P	30-Oct-84	14,160.00	The Scotian Shelf a Comprehensive Geological and Geophysical Study	N
NS27-T057-001DA	5-Apr-09	4,100.00	2D Seismic Reprocessing & Interpretation Report - EL2378 and EL2379	Y
8627-U003-001E	30-Jun-74	19,311.60	Data Purchase and Interpretation, Scotian Shelf	N

7. DIRECTORY OF OFFSHORE WELLS

Abbreviations: P & , Plugged & Abandoned
P & ! Plugged & Suspended
PRO Producing Well

Note: Wells are arranged alpha-numerically. Asterisk (*) indicates sidetracked well.
For development wells, first completion date and first termination date are shown.

Well Name	D#	Latitude Longitude	Drilling Unit	Spud Rig Release yy/mm/dd	RT Elevation Water Depth m (ft)		Total Depth m (ft)	Status (Classification)
Abenaki J-56	10	44°15'44.59"	Sedneth 1	70-12-04	25.9	(85.0)	4,569.0	P&A
Shell		59°53'03.02"		71-03-13	106.7	(350.0)	(14,991.0)	(dry)
Abenaki L-57	16	44°16'34.49"	Sedco H	70-05-28	31.4	(103.0)	2,178.0	P&A
Shell		59°53'39.64"		70-07-06	108.8	(357.0)	(7,147.0)	(dry)
Acadia K-62	171	42°51'43.54"	Ben Ocean	78-04-11	12.8	(42.0)	5,286.0	P&A
Chevron-PEX-Shell		61°55'02.08"	Lancer	78-08-02	866.2	(2,842.0)	(17,343.0)	(dry)
Adamant N-97	369	43°56'48.08"	Galaxy II	00-11-05	48.7	(159.7)	4,708.0	P&A
Mobil et al		60°14'27.66"		01-02-04	16.9	(55.4)	(15,666.0)	(gas show)
Adventure F-80	144	45°19'27.54"	Sedco J	75-01-13	29.9	(98.1)	1,999.0	P&A
Mobil et al		57°56'22.80"		75-02-22	98.8	(324.1)	(6,559.0)	(dry)
Albatross B-13	268	42°42'10.68"	Sedco 710	84-12-12	24.0	(78.7)	4,046.0	P&A
Petro-Can-Texaco et al		63°02'11.83"		85-03-28	1,341.0	(4,399.0)	(13,274.0)	(dry)
Alma F-67	239	43°36'17.98"	Sedco 709	83-12-02	24.0	(78.7)	5,054.0	P&A
Shell-Petro-Can et al		60°39'56.29"		84-07-05	68.0	(155.7)	(16,581.0)	(gas well)
Alma K-85	267	43°34'44.32"	Sedco 709	85-01-29	24.0	(78.7)	3,602.0	P&A
Shell PCI et al		60°43'01.69"		85-04-10	65.3	(223.1)	(11,817.0)	(gas well)
Alma 1 N-76	385	43°35'46.74"	Galaxy II	03-05-04	46.4	(152.2)	4,851.0	PROD
ExxonMobil		60°41'21.92"		03-11-09	66.6	(218.5)	(15,915.0)	(gas well)
Alma 2 N-76	387	43°35'46.80"	Galaxy II	03-06-17	46.4	(152.2)	3,790.0	PROD
ExxonMobil		60°41'21.82"		03-11-28	66.6	(218.5)	(12,434.0)	(gas well)
Alma 3 N-76	399	43°35'46.72"	Galaxy II	06-02-08	56.7	(186.0)	3,380.0	PROD
ExxonMobil		60°41'21.69"		06-04-11	66.6	(218.5)	(11,089.2)	(gas well)
Alma 4 N-76	401	43°35'46.66"	Rowan	09-06-08	49.7	(163.0)	3,985.0	P&A
Exxon Mobil		60°41'21.79"	Gorilla III	09-08-14	66.6	(218.5)	(13,074.1)	(gas well)

Well Name	D#	Latitude Longitude	Drilling Unit	Spud Rig Release yy/mm/dd	RT Elevation		Total Depth m (ft)	Status (Classification)
					Water Depth m (ft)			
Alma 4A	403	43°35'46.66	Rowan	09-08-08	40.9	134.1	4,329.0	PROD
Exxon Mobil		60°41'21.79"	Gorilla III	09-10-05	66.6	218.5	(14,202.8)	(gas well)
Annapolis B-24	374	43°23'07.91"	West	01-12-26	35.5	(116.4)	3,496.0	P&A
Marathon Canada		59°48'38.15"	Navion	02-04-24	1,737.0	(5,698.8)	(11,470.0)	(gas show)
Annapolis G-24	378	43°23'22.94"	West	02-04-17	35.5	(116.5)	6,182.0	P&A
Marathon Canada		59°48'29.19"	Navion	02-08-16	1,711.0	(5,613.5)	(20,282.0)	(gas well)
Arcadia J-16	225	44°05'43.59"	Zapata	83-01-27	38.1	(125.0)	6,005.0	P&A
Mobil et al		59°31'58.19"	Scotian	83-07-19	55.5	(182.1)	(19,701.0)	(gas well)
Argo F-38	17	45°27'23.22"	Sedco H	70-12-17	31.4	(103.0)	3,386.0	P&A
Shell		58°50'24.34"		71-02-19	71.6	(234.9)	(11,110.0)	(dry)
Balmoral M-32	320	43°51'54.89"	Rowan	91-02-26	38.0	(133.2)	2,525.0	P&A
LASMO NSR(V)L		60°35'46.73"	Gorilla III	91-04-09	34.0	(111.5)	(8,284.0)	(oil well)
Balvenie B-79	388	43°08'01.29"	Erik Raude	03-07-06	25.0	(82.0)	4,750.0	P&A
Imperial Oil		60°10'56.84"		03-09-06	1,803.0	(5,915.3)	(15,584.0)	(dry)
Banquereau C-21	207	44°10'07.52"	Bow Drill I	81-12-02	27.0	(88.6)	4,991.0	P&A
Petro-Canada et al		58°34'00.24"		82-08-01	83.0	(272.3)	(16,374.0)	(gas well)
North Banquereau I-13	214	44°12'33.16"	Bow Drill I	82-08-02	25.0	(82.0)	5,188.0	P&A
Petro-Canada et al		58°31'49.38"		82-12-28	91.0	(298.6)	(17,021.0)	(dry)
Bluenose G-47	94	44°06'20.79"	Sedco J	73-01-25	29.9	(98.1)	4,587.0	P&A
Mobil-Tetco		59°21'27.35"		73-04-25	81.4	(267.1)	(15,050.0)	(gas show)
Bluenose 2-G-47	223	44°06'22.30"	John Shaw	82-12-30	24.4	(80.1)	5,797.0	P&A
Mobil et al		59°21'23.05"		83-09-05	85.3	(279.9)	(19,019.0)	(gas show)
Bonnet P-23	244	42°22'48.64"	Bow Drill I	84-01-14	25.0	(82.0)	4,336.0	P&A
Petro-Canada et al		65°03'01.89"		84-04-04	133.5	(438.0)	(14,226.0)	(dry)
Cap Rouge F-52	103	47°11'20.29"	Sedco H	73-06-08	31.1	(102.0)	5,059.0	P&A
Shell Amoco		61°08'15.24"		73-09-03	56.7	(186.0)	(16,598.0)	(dry)
Chebucto K-90	242	43°39'44.73"	Bow Drill II	84-01-06	22.8	(74.8)	5,235.0	P&A
Husky/Bow Valley		59°42'51.52"		84-08-02	86.2	(357.6)	(17,175.0)	(gas well)
Chippewa G-67	68	44°36'20.50"	Sedco H	71-10-28	24.7	(81.0)	3,670.0	P&A
Shell		58°39'44.62"		71-12-18	67.7	(222.1)	(12,040.0)	(dry)
Chippewa L-75	30	44°34'35.87"	Sedneth 1	71-07-12	29.9	(98.0)	2,126.0	P&A
Shell		58°41'50.54"		71-08-12	70.1	(229.9)	(6,975.0)	(dry)

Well Name	D#	Latitude Longitude	Drilling Unit	Spud Rig Release yy/mm/dd	RT Elevation		Total Depth m (ft)	Status (Classification)
					Water Depth m	(ft)		
Citadel H-52	260	44°11'25.07"	Glomar	84-12-18	38.3	(125.7)	5,666.0	P&A
Home Oil et al		58°52'39.87"	Labrador 1	85-05-29	65.3	(214.2)	(18,589.0)	(dry)
Citnalta I-59	123	44°08'42.58"	Sedco J	74-02-04	29.9	(98.1)	4,575.0	P&A
Mobil-Tetco-Texaco		59°37'32.11"		74-04-29	94.5	(310.0)	(15,010.0)	(gas well)
Cohasset A-52	294	43°51'08.11"	Rowan	85-12-19	40.0	(131.2)	2,847.0	P&A
Petro-Canada et al		60°37'39.99"	Gorilla I	86-03-27	36.0	(118.1)	(9,340.0)	(oil well)
Cohasset CP1 P-51	328	43°50'57.15"	Rowan	93-05-08	41.5	(136.2)	2,472.0	P&A
LASMO NSR(V)L		60°37'39.99"	Gorilla III	93-06-05	43.0	(141.1)	(8,110.0)	(oil well)
Cohasset CP2 P-51	330	43°50'57.06"	Rowan	93-06-05	41.5	(136.2)	2,337.0	P&A
LASMO NSR(V)L		60°37'40.17"	Gorilla III	93-06-29	43.0	(141.1)	(7,667.0)	(oil well)
Cohasset CP3 P-51	331	43°50'57.11"	Rowan	93-06-30	41.5	(136.2)	2,750.0	P&A
LASMO NSR(V)L		60°37'39.90"	Gorilla III	93-07-29	43.0	(141.1)	(9,023.0)	(oil well)
Cohasset CP3A P-51	341	43°50'57.11"	Rowan	95-10-23	41.5	(136.2)	4,620.0	P&A
PanCanadian NS Ltd		60°37'39.90"	Gorilla III	96-02-15	43.0	(141.1)	(15,158.0)	(oil well)
Cohasset CP4 P-51	332	43°50'57.16"	Rowan	93-07-30	41.5	(136.2)	2,525.0	P&A
LASMO NSR(V)L		60°37'40.22"	Gorilla III	93-08-19	43.0	(141.1)	(8,284.0)	(oil well)
Cohasset CP5 P-51	333	43°50'57.05"	Rowan	93-08-19	41.5	(136.2)	2,613.0	P&A
LASMO NSR(V)L		60°37'39.95"	Gorilla III	93-12-10	43.0	(141.1)	(8,573.0)	(oil well)
Cohasset CP6 P-51	334	43°50'57.02"	Rowan	93-08-25	41.5	(136.2)	3,067.0	P&A
LASMO NSR(V)L		60°37'40.09"	Gorilla III	93-09-13	43.0	(141.1)	(10,063.0)	(oil well)
Cohasset CP6A P-51	335	43°50'57.02"	Rowan	93-09-16	41.5	(136.2)	2,660.0	P&A
LASMO NSR(V)L		60°37'40.09"	Gorilla III	93-09-30	43.0	(141.1)	(8,728.0)	(oil well)
Cohasset CP6B P-51	336	43°50'57.02"	Rowan	93-10-05	41.5	(136.2)	2,595.0	P&A
LASMO NSR(V)L		60°37'40.09"	Gorilla III	93-10-23	43.0	(141.1)	(8,414.0)	(oil well)
Cohasset CP6C P-51	345	43°50'57.02"	Rowan	97-05-06	41.5	(136.2)	2,639.0	P&A
PanCanadian NS Ltd.		60°37'40.09"	Gorilla III	97-06-30	43.0	(141.1)	(8,658.0)	(oil well)
Cohasset CP7 P-51	337	43°50'56.99"	Rowan	93-10-24	41.5	(136.2)	3,376.0	P&A
LASMO NSR(V)L		60°37'39.99"	Gorilla III	93-11-21	43.0	(141.1)	(11,076.0)	(oil well)
Cohasset CP7A P-51	338	43°50'56.99"	Rowan	93-12-11	41.5	(136.2)	2,740.0	P&A
LASMO NSR(V)L		60°37'39.99"	Gorilla III	93-12-28	43.0	(141.1)	(8,990.0)	(oil well)

Well Name	D#	Latitude Longitude	Drilling Unit	Spud Rig Release yy/mm/dd	RT Elevation Water Depth m (ft)		Total Depth m (ft)	Status (Classification)
Cohasset CP8 P-51	339	43°50'57.21"	Rowan	94-09-29	41.5	(136.2)	2,555.0	P&A
LASMO / NSR(V)L		60°37'39.94"	Gorilla III	94-11-24	43.0	(141.1)	(8,383.0)	(oil well)
Cohasset CP9 P-51	340	43°50'57.12"	Rowan	94-10-10	41.5	(136.2)	2,560.0	P&A
LASMO / NSR(V)L		60°37'40.13"	Gorilla III	94-11-29	43.0	(141.1)	(8,399.0)	(oil well)
Cohasset CP10 P-51	342	43°50'57.09"	Rowan	96-06-29	41.5	(136.2)	2,833.0	P&A
PanCanadian NS Ltd		60°37'40.04"	Gorilla III	96-07-26	43.0	(141.1)	(9,294.0)	(oil well)
Cohasset CP10A P-51	343	43°50'57.09"	Rowan	96-10-29	41.5	(136.2)	3,107.0	P&A
PanCanadian NS Ltd		60°37'40.04"	Gorilla III	96-11-28	43.0	(141.1)	(10,194.0)	(oil well)
Cohasset CP10B P-51	344	43°50'57.09"	Rowan	97-01-05	41.5	(136.2)	2,485.0	P&A
PanCanadian NS Ltd		60°37'40.04"	Gorilla III	97-02-09	43.0	(141.1)	(8,153.0)	(oil well)
Cohasset D-42	96	43°51'06.52"	Sedco J	73-04-27	31.4	(103.0)	4,427.0	P&A
Mobil-Tetco		60°37'13.89"		73-07-16	41.1	(135.0)	(14,525.0)	(oil well)
Cohasset L-97	177	43°56'37.19"	Gulftide	78-07-13	32.9	(100.1)	4,872.0	P&A
Mobil-Tetco-PEX		60°29'58.55"		78-11-13	21.6	(70.9)	(15,984.0)	(gas show)
Cohasset P-42	174	43°51'50.32"	Gulftide	78-06-09	30.5	(100.1)	2,591.0	P&A
Mobil-Tetco-PEX		60°36'18.23"		78-07-10	34.1	(111.9)	(8,500.0)	(dry)
Como P-21	305	43°50'45.87"	Rowan	87-05-15	40.2	(132.0)	3,540.0	P&A
Petro-Canada et al		60°48'19.28"	Gorilla I	87-07-01	39.0	(127.0)	(11,614.0)	(dry)
Cree E-35	6	43°44'20.79"	Sedco H	70-09-08	31.4	(103.0)	3,984.0	P&A
Shell		60°35'55.87"		70-11-03	53.3	(175.0)	(13,070.0)	(gas show)
Cree I-34	393	43°43'41.48"	Rowan	04-05-15	49.0	(160.8)	3,945.0	P&A
ExxonMobil		60°34'42.62"	Gorilla V	04-08-14	57.0	(187.0)	(12,942.9)	(dry)
Crimson F-81	394	43°20'22.29"	Deepwater	04-06-18	21.4	(70.2)	6,676.0	P&A
Marathon Canada		59°42'57.03"	Pathfinder	04-08-27	2,091.5	(6,624.0)	(21,404.0)	(gas show)
Crow F-52	20	45°21'24.23"	Sedneth 1	71-04-12	25.9	(85.0)	1,507.0	P&A
Shell		59°08'22.73"		71-04-27	94.5	(310.0)	(4,943.0)	(dry)
Dauntless D-35	27	44°44'08.26"	Sedco H	71-04-26	31.4	(103.0)	4,741.0	P&A
Mobil Tetco		57°20'46.62"		71-07-16	69.2	(227.0)	(15,555.0)	(dry)
Demascota G-32	125	43°41'27.19"	Sedco H	74-03-01	29.9	(98.0)	4,672.0	P&A
Shell		60°49'54.00"		74-05-20	54.3	(178.0)	(15,329.0)	(dry)
Dominion J-14	398	43°53'33.28"	Rowan	05-11-18	47.5	(155.8)	3,700.0	P&A

Well Name	D#	Latitude Longitude	Drilling Unit	Spud Rig Release yy/mm/dd	RT Elevation		Total Depth m (ft)	Status (Classification)
					Water Depth m	(ft)		
EnCana Marauder		60°31'54.21"	Gorilla VI	06-01-30	29.5	(96.8)	(12,139.0)	(dry)
Dominion J-14A	400	43°53'33.33"	Rowan	05-12-30	47.5	(155.8)	(4,440.0)	P&A
EnCana Marauder		60°31'54.21	Gorilla VI	06-01-24	29.5	(96.8)	(14,566.9)	(dry)
Dover A-43	248	44°22'09.02"	Bow Drill I	84-04-17	25.0	(82.0)	4,525.0	P&A
Petro-Can et al		60°06'09.28"		84-07-10	116.0	(380.6)	(14,846.0)	(dry)
Eagle D-21	80	43°50'06.73"	Sedco H	72-04-22	29.9	(98.1)	4,660.0	P&A
Shell et al		59°34'09.21"		72-07-02	51.2	(168.0)	(15,290.0)	(gas show)
Emma N-03	365	44°02'47.78"	Galaxy II	00-08-02	45.7	(149.9)	4,600.0	P&A
Mobil Oil		60°00'53.78"		00-11-01	50.6	(166.0)	(15,092.0)	(dry)
Erie D-26	19	44°55'03.52"	Sedneth 1	71-03-16	25.9	(85.0)	2,376.0	(P&A)
Shell		59°34'29.82"		71-04-11	98.1	(321.9)	(7,795.0)	(oil show)
Esperanto K-78	13	44°47'31.26"	Sedco H	71-03-09	31.4	(103.0)	3,540.0	P&A
Mobilet al		58°11'19.24"		71-04-24	68.8	(225.1)	(11,615.0)	(dry)
Eurydice P-36	34	45°25'47.30"	Sedco H	71-09-15	29.9	(98.1)	2,965.0	P&A
Shell		60°04'46.97"		71-10-24	164.6	(540.0)	(9,728.0)	(dry)
Evangeline H-98	251	43°17'25.27"	Bow Drill III	84-03-27	23.5	(70.9)	3,365.0	P&A
Husky/Bow Valley		60°58'48.40"		84-06-16	175.0	(570.9)	(11,040.0)	(dry)
(re-entered well)			Bow Drill II	84-08-08	20.1	(73.8)	5,044.0	
				84-11-01	175.0	(570.9)	(16,549.0)	
Fox I-22	23	45°21'33.58"	Sedco H	71-02-20	31.4	(103.0)	829.0	P&A
Shell		59°33'16.03"		71-03-03	83.8	(274.9)	(2,722.0)	(dry)
Glenelg E-58 & E58A	256	43°37'17.51"	Sedco 709	84-07-07	24.0	(787.0)	4,192.0	P&A
Shell PCI et al		60°08'51.63"		84-10-20	79.0	(259.2)	(13,753.0)	(gas well)
Glenelg H-38	261	43°37'19.33"	Sedco 709	84-10-26	24.1	(79.1)	4,865.0	P&A
Shell PCI et al		60°04'48.61"		85-01-26	89.3	(293.0)	(15,961.0)	(dry)
Glenelg H-59	384	43°38'15.67"	Galaxy II	03-01-19	48.7	(159.7)	4,116.0	P&A
ExxonMobil		60°07'47.15"		03-03-17	75.0	(246.0)	(13,503.0)	(gas well)
Glenelg J-48	226	43°37'38.57"	Sedco 709	83-02-22	24.0	(78.7)	5,250.0	P&A
Shell Petro-Can et al		60°06'24.84"		83-11-07	83.7	(274.6)	(17,224.0)	(gas well)
Glenelg N-49	299	43°38'59.43"	Vinland	86-06-01	23.2	(76.1)	4,040.0	P&A
Shell PCI et al		60°07'02.10"		86-08-04	72.3	(237.2)	(13,254.0)	(gas well)

Well Name	D#	Latitude Longitude	Drilling Unit	Spud Rig Release yy/mm/dd	RT Elevation		Total Depth m (ft)	Status (Classification)
					Water Depth m	(ft)		
Glooscap C-63	231	43°12'09.83"	Bow Drill II	83-08-07	22.9	(75.1)	4,542.0	P&A
Husky/Bow Valley et al		62°09'56.75"		84-01-03	99.0	(324.8)	(14,902.0)	(dry)
Grand Pre G-08	348	43°57'24.10"	Rowan	98-05-04	42.4	(139.0)	2,382.0	P&A
PanCanadian		60°30'30.79"	Gorilla II	98-06-03	20.1	(65.9)	(7,815.0)	(dry)
Hercules G-15	130	45°34'20.65"	Sedco H	74-07-23	29.9	(98.1)	1,081.0	P&A
Union et al		58°47'13.06"		74-08-01	115.8	(379.9)	(3,547.0)	(dry)
Hesper I-52	162	44°41'40.33"	Sedco H	76-05-08	29.9	(98.1)	2,804.0	P&A
Petro-Canada Mobil		57°52'32.24"		76-06-05	42.1	(138.1)	(9,200.0)	(dry)
Hesper P-52	257	44°41'50.95"	Rowan	84-08-22	40.5	(132.9)	5,679.0	P&A
Bow Valley/Husky et al		57°52'47.72"	Gorilla I	85-05-01	44.5	(146.0)	(15,632.0)	(dry)
Huron P-96	11	44°35'47.11"	Sedneth 1	70-07-22	25.9	(85.0)	3,018.0	P&A
Shell		58°28'50.64"		70-08-27	57.9	(190.0)	(9,903.0)	(dry)
Intrepid L-80	126	43°49'35.78"	Sedco J	74-05-18	31.4	(100.0)	4,162.0	P&A
Texaco et al.		59°56'43.83"		74-08-15	43.6	(142.0)	(13,655.0)	(gas well)
Iroquois J-17	24	44°26'31.38"	Sedco H	70-08-18	31.4	(103.0)	2,086.0	P&A
Shell		59°47'12.29"		70-09-06	59.4	(194.9)	(6,845.0)	(dry)
Jason F-20	131	45°29'05.45"	Sedco H	74-07-03	29.9	(98.1)	2,483.0	P&A
Union et al		58°32'28.27"		74-07-22	112.8	(370.1)	(8,146.0)	(dry)
Kegeshook G-67	275	44°06'28.87"	Glomar	85-06-11	37.0	(787.0)	3,540.0	P&A
Shell PCI et al		60°24'31.26"	Labrador 1	85-07-30	62.0	(203.4)	(11,614.0)	(dry)
Lawrence D-14	319	43°53'04.79"	Rowan	91-01-14	40.0	(131.2)	2,850.0	P&A
LASMO NSRL		60°32'51.84"	Gorilla III	91-02-24	30.0	(98.4)	(9,350.0)	(dry)
Louisbourg J-47	240	44°26'43.08"	Glomar	83-11-25	38.2	(125.3)	6,043.0	P&A
Home Oil et al		58°21'26.02"	Labrador 1	84-10-13	63.1	(207.0)	(19,826.0)	(gas show)
MarCoh D-41	390	43°50'09.48"	Rowan	03-08-28	47.6	(156.2)	3,625.0	P&A
EnCana		60°37'21.56"	Gorilla V	03-10-23	43.4	(142.3)	(11,893.0)	(gas well)
Margaree E-70	402	43°49'16.94"	Rowan	10-01-12	40.9	134.2	2,539.0	P&S
EnCana		60°40'20.18"	Gorilla III	10-03-31	41.0	134.5	(8,330.0)	injector
Margaree F-70	386	43°49'24.46"	Rowan	03-05-21	47.6	(155.8)	3,677.0	P&A
EnCana Corporation		60°39'54.85"	Gorilla V	03-08-06	42.5	(139.4)	(12,064.0)	(gas well)
Mariner I-85	392	44°04'30.74"	Rowan	03-11-19	47.0	(154.2)	5,408.0	P&A
Canadian Superior		59°42'07.20"	Gorilla V	04-03-16	55.5	(182.1)	(17,743.0)	(gas show)

Well Name	D#	Latitude Longitude	Drilling Unit	Spud Rig Release yy/mm/dd	RT Elevation		Total Depth m (ft)	Status (Classification)
					Water Depth m	(ft)		
Marmora C-34	70	43°43'13.79"	Sedneth 1	72-01-15	25.9	(85.0)	4,038.0	P&A
Shell		60°05'21.93"		72-03-31	57.6	(189.0)	(13,248.0)	(gas show)
Marmora P-35	98	43°44'59.36"	Sedco H	73-03-06	29.9	(98.1)	4,093.0	P&A
Shell et al		60°04'47.58"		73-04-21	53.3	(174.9)	(13,428.0)	(dry)
Marquis L-35	379	44°04'37.57"	Rowan	02-07-06	56.0	(183.7)	4,552.0	P&A
Canadian Superior		60°20'52.72"	Gorilla V	02-09-14	48.0	(154.2)	(14,934.4)	(dry)
Marquis L-35A	380	44°04'37.57"	Rowan	02-08-27	56.0	(183.7)	4,552.0	P&A
Canadian Superior		60°20'52.72"	Gorilla V	02-09-14	48.0	(154.2)	(14,934.4)	(dry)
Merigomish C-52	276	43°31'02.62"	Sedco 706	85-06-15	27.5	(90.2)	3,950.0	P&A
Shell PCI et al		60°38'33.78"		85-08-12	75.0	(246.1)	(12,959.0)	(dry)
Mic Mac D-89	160	44°38'08.86"	Sedco H	76-03-26	29.9	(98.1)	3,261.0	P&A
Shell et al		59°28'18.93"		76-05-04	85.3	(279.9)	(10,700.0)	(dry)
Mic Mac H-86	8	44°35'27.78"	Sedneth 1	70-08-31	25.9	(85.0)	4,785.0	P&A
Shell		59°27'03.13"		70-12-02	54.3	(178.1)	(15,700.0)	(dry)
Mic Mac J-77	7	44°36'42.82"	Sedneth 1	70-03-25	26.0	(85.3)	3,886.0	P&A
Shell		59°26'10.87"		70-05-24	62.8	(206.0)	(12,750.0)	(oil show)
Migrant N-20	170	43°59'56.24"	Gulftide	77-07-29	26.1	(85.6)	4,669.0	P&A
Mobil-Tetco-PEX		60°17'18.23"		78-01-23	13.7	(44.9)	(15,318.0)	(gas show)
Mississauga H-54	9	44°23'20.39"	Sedneth 1	70-05-26	25.9	(85.0)	4,202.0	P&A
Shell		59°22'47.56"		70-07-20	102.1	(335.0)	(13,787.0)	(dry)
Mohawk B-93	5	42°42'10.52"	Sedco H	70-05-03	31.4	(103.0)	2,126.0	P&A
Shell		64°43'53.50"		70-05-23	117.0	(383.9)	(6,975.0)	(dry)
Moheida P-15	168	43°04'56.32"	Sedco H	76-11-18	29.9	(98.1)	4,298.0	P&A
Petro-Can et al		62°16'44.33"		77-02-15	111.9	(367.1)	(14,100.0)	(dry)
Mohican I-100	74	42°59'39.04"	Sedco H	71-12-27	29.9	(98.1)	4,393.0	P&A
Shell		62°28'51.32"		72-03-10	153.3	(503.0)	(14,414.0)	(dry)
Montagnais I-94	140	42°53'40.71"	Sedco H	74-09-12	29.9	(98.1)	1,646.0	P&A
Union et al		64°13'46.51"		74-09-29	112.8	(370.1)	(5,400.0)	(dry)
Musquodoboit E-23	370	43°42'15.82"	Rowan	01-07-01	47.1	(154.5)	3,818.0	P&A
PanCanadian		60°49'09.99"	Gorilla V	01-09-02	47.3	(155.2)	(12,526.0)	(dry)

Well Name	D#	Latitude Longitude	Drilling Unit	Spud Rig Release yy/mm/dd	RT Elevation Water Depth m (ft)	Total Depth m (ft)	Status (Classification)
Naskapi N-30	4	43°29'46.29"	Sedneth 1	70-02-16	26.0 (85.3)	2,205.0	P&A
Shell		62°34'00.63"		70-03-19	95.1 (312.0)	(7,235.0)	(dry)
Newburn H-23	377	43°12'16.43"	Deepwater	02-05-22	24.0 (78.7)	6,070.0	P&A
Chevron Canada		60°48'21.20"	Millennium	02-08-21	977.0 (3,205.3)	(19,915.0)	(gas show)
N. Sydney F-24	163	46°33'23.13"	Sedco H	76-06-09	29.9 (98.1)	1,707.0	P&A
Shell et al		59°48'45.47"		76-06-14	59.7 (195.9)	(5,600.0)	(gas show)
N. Sydney P-05	134	46°34'46.24"	Sedco H	74-08-10	29.9 (98.1)	1,661.0	P&A
Murphy et al		59°45'01.65"		74-09-06	62.8 (206.0)	(5,449.0)	(gas show)
N. Triumph B-52	289	43°41'02.38"	John	86-01-24	24.0 (72.2)	3,960.0	P&A
Shell PCI et al		59°52'56.87"	Shaw	86-03-29	81.0 (272.3)	(12,992.0)	(gas well)
N. Triumph G-43	281	43°42'19.06"	Sedco 709	85-09-26	24.0 (78.7)	4,504.0	P&A
Shell PCI et al		59°51'23.02"		86-01-31	73.6 (241.5)	(14,777.0)	(gas well)
N. Triumph 1 P-42	361	43°41'58.31"	Galaxy II	99-10-04	54.7 (179.4)	3,805.0	PROD.
SOEI		59°51'18.86"		99-12-04	75.4 (247.4)	(12,484.0)	(gas well)
N. Triumph 2 P-42	363	43°41'58.19"	Rowan	00-05-20	45.1 (147.9)	3,937.0	PROD.
SOEI		59°51'18.99"	Gorilla II	00-07-05	75.5 (247.7)	(12,917.0)	(gas well)
Ojibwa E-07	121	43°46'20.44"	Sedco H	74-02-04	29.9 (98.1)	2,330.0	P&A
Union et al		61°46'14.42"		74-02-28	75.6 (248.0)	(7,643.0)	(dry)
Olympia A-12	213	44°01'03.27"	Zapata	82-04-23	38.0 (125.0)	6,064.0	P&A
Mobil et al		59°46'44.09"	Scotian	83-01-10	40.0 (130.9)	(19,895.0)	(gas well)
Oneida O-25	3	43°14'57.36"	Sedneth 1	69-11-16	25.9 (85.0)	4,120.0	P&A
Shell		61°33'36.49"		70-02-10	82.3 (270.0)	(13,516.0)	(dry)
Onondaga B-84	373	43°43'08.92"	Galaxy II	01-11-17	45.7 (149.9)	5,019.0	P&A
Shell Canada		60°12'41.51"		02-05-12	59.7 (195.8)	(16,466.0)	(gas well)
Onondaga B-96	158	43°45'08.21"	Sedco H	76-01-12	29.9 (98.1)	3,758.0	P&A
Shell		60°14'09.76"		76-03-21	60.4 (198.2)	(12,328.0)	(dry)
Onondaga E-84	2	43°43'16.13"	Sedneth 1	69-09-01	25.9 (85.0)	3,988.0	P&A
Shell		60°13'17.18"		69-11-11	57.9 (190.0)	(13,085.0)	(gas well)
Onondaga F-75	33	43°44'17.84"	Sedco H	71-07-28	31.4 (103.0)	3,891.0	P&A
Shell		60°11'36.25"		71-09-07	56.4 (185.0)	(12,765.0)	(dry)
Onondaga O-95	22	43°44'48.10"	Sedco H	70-07-09	31.4 (103.0)	3,314.0	P&A
Shell		60°13'52.60"		70-08-16	53.9 (176.8)	(10,874.0)	(gas show)

Well Name	D#	Latitude Longitude	Drilling Unit	Spud Rig Release yy/mm/dd	RT Elevation		Total Depth m (ft)	Status (Classification)
					Water Depth m	(ft)		
Panuke B-90	300	43°49'11.99"	Vinland	86-08-06	23.0	(75.4)	3,445.0	P&A
Shell/PCI et al		60°42'34.59"		86-09-24	47.0	(154.1)	(11,302.0)	(oil well)
Panuke F-09	367	43°48'22.47"	Rowan	00-08-23	39.9	(130.5)	3,815.0	P&A
PacCanadian		60°45'57.64"	Gorilla III	00-11-11	42.0	(137.8)	(12,516.0)	(gas show)
Panuke F-99	307	43°48'24.90"	Rowan	87-07-02	40.2	(279.0)	2,507.0	P&A
Petro-Canada et al		60°44'34.01"	Gorilla I	87-08-24	45.1	(148.0)	(8,225.0)	(oil well)
Panuke H-08	364	43°47'21.21"	Rowan	00-05-25	39.5	(129.6)	3,682.0	P&S
PanCanadian		60°45'19.93"	Gorilla III	00-09-19	36.5	(119.7)	(12,080.0)	(gas well)
Panuke M-79	366	43°48'49.85"	Rowan	00-07-12	46.0	(150.9)	4,598.0	P&A
PanCanadian		60°41'50.23"	Gorilla IV	00-10-02	43.5	(142.7)	(15,085.0)	(gas well)
Panuke M-79A	368	43°48'48.81"	Rowan	00-10-11	46.0	(150.9)	3,934.0	P&A
PanCanadian		60°41'47.42"	Gorilla V	00-12-17	43.5	(142.7)	(12,907.0)	(gas well)
Panuke PI1	324	43°48'40.19"	Rowan	91-07-09	47.2	(154.8)	1,082.0	P&A
LASMO NSR(V)L		60°44'00.13"	Gorilla III	92-07-12	44.0	(144.4)	(3,550.0)	(oil well)
				93-02-24				
Panuke PI-1A	360	43°48'40.13"	Rowan	99-08-27	47.2	(154.8)	4,033.0	P&A
PanCanadian/NSRL		60°44'00.17"	Gorilla III	99-11-11	44.0	(144.4)	(13,232.0)	(gas well)
Panuke PI-1B	362	43°48'40.18"	Rowan	99-11-11	47.2	(154.8)	4,046.0	P&A
PanCanadian		60°44'00.13"	Gorilla III	00-02-19	44.0	(144.4)	(13,274.0)	(gas well)
Panuke PP1	321	43°48'40.14"	Rowan	91-05-11	47.2	(154.8)	3,031.0	P&A
LASMO NSR(V)L		60°44'00.25"	Gorilla III	91-07-02	44.7	(144.6)	(9,945.0)	(oil well)
				93-02-24				
Panuke PP2	322	43°48'40.20"	Rowan	91-07-18	47.2	(154.8)	2,435.0	P&A
LASMO NSR(V)L		60°44'00.26"	Gorilla III	92-01-04	44.7	(144.4)	(7,989.0)	(oil well)
				93-02-24				
Panuke PP3	323	43°48'40.23"	Rowan	91-07-03	47.2	(154.8)	2,685.0	P&A
LASMO NSR(V)L		60°44'00.19"	Gorilla III	92-02-02	44.7	(144.4)	(9,909.0)	(oil well)
				93-02-24				
Panuke PP3A	346	43°48'40.23"	Rowan	98-03-15	47.2	(154.8)	3,305.0	P&A
PanCanadian/NSRL		60°44'00.19"	Gorilla III	98-04-13	44.6	(146.3)	(10,843.0)	(oil well)
Panuke PP3B	347	43°48'40.23"	Rowan	98-04-29	47.2	(154.8)	4,097.0	P&A
PanCanadian/NSRL		60°44'00.19"	Gorilla III	98-06-12	44.6	(146.3)	(13,441.0)	(oil well)

Well Name	D#	Latitude Longitude	Drilling Unit	Spud Rig Release yy/mm/dd	RT Elevation Water Depth m (ft)	Total Depth m (ft)	Status (Classification)
Panuke PP3C	354	43°48'40.23	Rowan	98-07-19	47.2 (154.8)	4,163.0	P&A
PanCanadian/NSRL		60°44'00.19"	Gorilla III	99-04-12	44.7 (144.4)	(13,658.0)	(gas well)
Panuke PP4	325	43°48'40.14"	Rowan	92-06-27	47.2 (154.9)	2,292.0	P&A
LASMO NSR(V)L		60°44'00.17"	Gorilla III	92-07-25	44.0 (144.4)	(7,520.0)	(oil well)
Panuke PP4A*	329	43°48'40.14"	Rowan	92-07-25	47.2 (154.9)	1,776.0	P&A
LASMO NSR(V)L		60°44'00.17"	Gorilla III	92-08-02	44.0 (144.4)	(5,827.0)	(oil well)
Panuke PP4B*	326	43°48'40.14"	Rowan	92-08-04	47.2 (154.9)	3,054.0	P&A
LASMO NSR(V)L		60°44'00.17"	Gorilla III	92-10-11	44.0 (144.4)	(10,020.0)	(oil well)
Panuke PP4C*	327	43°48'40.14"	Rowan	92-10-11	47.2 (154.9)	3,047.0	P&A
LASMO NSR(V)L		60°44'00.17"	Gorilla III	92-11-14	44.0 (144.4)	(9,997.0)	(oil well)
Penobscot B-41	169	44°10'02.44"	Sedco H	77-02-18	29.9 (98.1)	3,444.0	P&A
Shell-Petro-Canada		60°06'32.72"		77-03-30	117.9 (386.8)	(11,300.0)	(dry)
Penobscot L-30	165	44°09'43.55"	Sedco H	76-07-18	29.9 (98.1)	4,267.0	P&A
Petro-Canada-Shell		60°04'09.33"		76-09-23	137.5 (451.1)	(14,000.0)	(oil & gas show)
Peskowesk A-99	272	44°28'13.84"	Sedco 706	85-04-22	27.5 (90.2)	4,024.0	P&A
Shell PCI et al		58°58'40.98"		85-06-13	62.0 (203.4)	(13,202.0)	(dry)
Primrose A-41,	86/97	44°00'05.68"	Sedco H	72-10-15	29.9 (98.1)	3,616.0	P&A
1a A-41		59°06'18.26"		73-01-27	109.7 (359.9)	(11,865.0)	(gas show)
Shell							
Primrose F-41	95	44°00'29.55"	Sedco H	73-01-30	29.9 (98.1)	2,592.0	GS
Shell		59°07'06.52"		73-03-05	68.6 (225.1)	(8,505.0)	(gas show)
Primrose N-50	75	43°59'48.43"	Sedco H	72-03-14	29.9 (98.1)	1,713.0	P&A
Shell		59°06'51.63"		72-04-21	90.8 (298.0)	(5,622.0)	(oil & gas well)
Queensland M-88	375	43°47'55.26"	Rowan	01-12-14	47.0 (154.1)	4,443.0	P&A
PanCanadian-Murphy		60°43'11.19"	Gorilla V	02-02-10	38.0 (124.6)	(14,577.0)	(gas show)
S. Desbarres O-76	250	44°05'56.07"	Vinland	84-04-17	23.7 (77.8)	6,039.0	P&A
Shell-Petro-Can et al		59°55'59.02"		84-10-13	69.0 (226.4)	(19,813.0)	(dry)
Sable Island 1-H-58	81	43°57'27.17"	Bawden	72-06-03	10.7 (35.1)	3,039.0	P&A
Mobil-Tetco		60°07'37.81"	Rig 9	72-08-27	(n/a)	(9,971.0)	(oil & gas well)
Sable Island 2-H-58	88	43°57'27.14"	Bawden	72-10-06	10.6 (34.8)	2,758.0	P&A
Mobil-Tetco		60°07'37.75"	Rig 9	72-12-31	(n/a)	(9,050.0)	(oil & gas well)

Well Name	D#	Latitude Longitude	Drilling Unit	Spud Rig Release yy/mm/dd	RT Elevation Water Depth m (ft)		Total Depth m (ft)	Status (Classification)
Sable Island 3-H-58	91	43°57'27.21"	Bawden	73-01-01	10.6	(34.8)	3,740.0	P&A
Mobil-Tetco		60°07'37.88"	Rig 9	73-03-21		(n/a)	(12,270.0)	(oil & gas well)
Sable Island 4-H-58	101	43°57'27.24"	Bawden	73-03-22	10.6	(34.8)	4,519.0	P&A
Mobil-Tetco		60°07'37.95"	Rig 9	73-08-11		(n/a)	(14,827.0)	(oil & gas well)
Sable Island 5-H-58	112	43°57'27.10"	Bawden	73-08-15	10.6	(34.8)	2,478.0	P&A
Mobil-Tetco		60°07'37.68"	Rig 9	73-09-18		(n/a)	(8,130.0)	(oil & gas well)
Sable Island 6-H-58	118	43°57'27.07"	Bawden	73-09-22	10.6	(34.8)	2,355.0	P&A
Mobil-Tetco		60°07'37.61"	Rig 9	73-10-18		(n/a)	(7,727.0)	(dry)
Sable Island C-67	1	43°56'04.90"	Bawden	67-06-07	8.2	(26.9)	4,604.0	P&A
Mobil		59°55'01.40"	Rig 18	68-01-02	3.9	(12.8)	(15,106.0)	(dry)
Sable Island E-48	39	43°57'20.35"	Bawden	71-05-28	6.4	(21.0)	3,603.0	P&A
Mobil-Tecto		60°07'24.44"	Rig 14	71-10-15	0.0	0.0	(11,820.0)	(oil & gas well)
Sable Island O-47	69	43°56'56.70"	Bawden	71-12-13	7.0	(23.0)	4,198.0	SG
Mobil-Tecto		60°06'38.08"	Rig 14	72-07-01	1.8	(5.9)	(13,775.0)	(gas well)
Sachem D-76	146	44°35'09.22"	Sedco J	75-05-17	29.9	(98.1)	4,878.0	P&A
Mobil-Texaco		57°41'58.29"		75-07-30	58.5	(191.9)	(16,006.0)	(dry)
Sambro I-29	129	43°38'35.29"	Sedco H	74-05-23	29.9	(98.1)	3,069.0	P&A
Union et al		62°48'08.52"		74-06-27	193.5	(634.8)	(10,071.0)	(dry)
Sauk A-57	29	44°16'05.70"	Sedneth 1	71-04-30	25.9	(85.0)	4,575.0	P&A
Shell		58°37'44.41"		71-07-10	60.0	(196.9)	(15,010.0)	(dry)
Shelburne G-29	280	42°38'26.87"	Sedco 710	85-03-31	25.0	(82.0)	4,005.0	P&A
Petro-Can et al		63°33'33.46"		85-04-06	1,153.5	(3,784.4)	(13,140.0)	(dry)
Shubenacadie H-100	219	42°49'28.43"	Sedco 709	82-11-05	24.1	(79.1)	4,200.0	P&A
Shell et al		61°28'42.81"		83-02-12	1,476.5	(4,842.5)	(13,780.0)	(dry)
S. Griffin J-13	243	44°22'37.77"	Rowan	84-01-08	39.6	(129.9)	5,911.0	P&A
Husky/Bow Valley et al		58°01'54.76"	Gorilla I	84-08-20	63.4	(208.0)	(19,393.0)	(dry)
S. Sable B-44	312	43°53'06.56"	Rowan	88-03-27	42.1	(264.0)	5,208.0	P&A
Mobil et al		59°51'42.09"	Gorilla I	88-07-13	35.9	(118.0)	(17,085.2)	(gas well)
S. Venture O-59	217	43°58'52.83"	Rowan	82-04-29	35.4	(116.1)	6,176.0	P&A
Mobil et al		59°38'08.49"	Juneau	83-01-02	24.0	(80.1)	(20,262.0)	(gas well)
S. Venture P-60	382	43°59'50.36"	Galaxy II	01-10-29	48.7	(159.7)	4,439.0	PROD.

Well Name	D#	Latitude Longitude	Drilling Unit	Spud Rig Release yy/mm/dd	RT Elevation Water Depth m (ft)	Total Depth m (ft)	Status (Classification)
ExxonMobil		59°37'41.40"		03-01-15	23.0 (75.4)	(14,564.0)	(gas well)
S. Venture 2 P-60	395	43°59'50.34"	Galaxy II	04-06-08	55.5 (1,821.0)	5,315.0	PROD.
ExxonMobil		59°37'41.52"		05-06-24	22.9 (75.1)	(17,438.0)	(gas well)
S. Venture 3 P-60	396	43°59'50.47"	Galaxy II	05-03-05	55.9 (183.1)	4,666.0	PROD.
ExxonMobil		59°37'41.55"		05-07-01	22.9 (75.1)	(15,308.0)	(gas well)
Southampton A-25	372	43°34'09.66"	Rowan	01-09-03	82.0 (269.0)	5,058.0	P&A
PanCanadian		60°18'16.67"	Gorilla V	01-12-12	47.0 (154.1)	(16,594.0)	(dry)
Saint Paul P-91	235	47°10'57.88"	Bow Drill I	83-09-02	24.9 (81.7)	2,885.0	P&A
Petro-Canada et al		60°13'36.83"		83-12-31	173.9 (570.5)	(9,465.0)	(dry)
SW Banquereau F-34	227	44°03'15.62"	Bow Drill I	83-02-20	24.9 (81.7)	6,309.0	P&A
Petro-Canada et al		58°50'21.60"		83-08-30	113.7 (373.0)	(20,699.0)	(gas show)
Tantallon M-41	293	43°50'55.96"	Sedco 709	86-02-15	24.0 (78.7)	5,602.0	P&A
PCI et al		58°22'23.99"		86-04-18	1,516.0 (4,974.0)	(18,379.0)	(dry)
Thebaud C-74	295	43°53'05.34"	Rowan	86-03-29	41.8 (118.0)	5,150.0	P&A
Mobil et al		60°11'35.62"	Gorilla I	86-09-26	29.6 (97.0)	(16,896.0)	(gas well)
Thebaud 1 E-74	355	43°53'28.21"	Galaxy II	98-11-15	45.0 (147.6)	4,700.0	PROD.
SOEI		60°11'59.68"		00-07-25	29.2 (95.8)	(15,420.0)	(gas well)
Thebaud 2 E-74	356	43°53'28.08"	Galaxy II	98-11-18	45.0 (147.6)	4,394.0	PROD.
SOEI		60°11'59.70"		99-09-13	29.2 (95.8)	(14,416.0)	(gas well)
Thebaud 3 E-74	357	43°53'28.35"	Galaxy II	98-11-22	45.0 (147.6)	4,523.0	PROD.
SOEI		60°11'59.66"		99-07-26	29.2 (95.8)	(14,839.0)	(gas well)
Thebaud 4 E-74	358	43°53'28.21"	Galaxy II	98-11-20	45.0 (147.6)	NA	PROD.
SOEI		60°11'59.87"		NA	29.2 (95.8)		(gas well)
Thebaud 5 E-74	359	43°53'28.21"	Galaxy II	98-12-16	45.0 (147.6)	5,015.0	PROD.
SOEI		60°11'59.49"		99-04-15	29.2 (95.8)	(16,453.0)	
Thebaud 6 E-74	371	43°53'28.14"	Galaxy II	01-08-16	55.0 (180.4)	4,011.0	PROD.
SOEI		60°11'59.78"		01-11-09	29.2 (95.8)	(13,159.0)	(gas well)
Thebaud I-93	271	43°52'44.54"	Rowan	85-03-27	37.0 (121.4)	5,166.0	P&A
Mobil et al		60°13'50.94"	Juneau	85-09-30	31.0 (102.0)	(16,949.0)	(gas well)
Thebaud I-94	172	43°53'43.67"	Gulftide	78-02-26	29.9 (98.1)	3,962.0	P&A
Mobil-Tetco-PEX		60°13'38.13"		78-07-03	28.0 (91.9)	(13,000.0)	(gas well)

Well Name	D#	Latitude Longitude	Drilling Unit	Spud Rig Release yy/mm/dd	RT Elevation		Total Depth m (ft)	Status (Classification)
					Water Depth m	(ft)		
Thebaud P-84	85	43°53'59.53"	Sedco H	72-07-08	28.6	(93.8)	4,115.0	P&A
Mobil-Tetco		60°12'19.34"		72-10-13	25.9	(85.0)	(13,500.0)	(gas well)
Torbrook C-15	383	42°34'02.60"	Erik Raude	02-11-16	25.0	(82.0)	3,600.0	P&A
EnCana Corporation		62°17'35.64"		03-01-14	1,674.5	(5,493.8)	(11,811.0)	(dry)
Triumph P-50	12	43°39'51.62"	Sedneth 1	71-08-04	25.9	(85.0)	4,595.0	P&A
Shell		59°51'02.36"		71-10-10	90.2	(295.9)	(15,077.0)	(gas show)
Tuscarora C-61	99	44°40'10.35"	Sedco H	73-04-23	29.9	(98.1)	3,939.0	P&A
Shell		58°55'10.85"		73-06-02	78.9	(258.9)	(12,925.0)	(dry)
Uniacke G-72	228	44°11'29.17"	Vinland	83-05-09	23.5	(77.1)	5,735.0	P&A
Shell-Petro Can et al		59°41'09.75"		84-04-04	152.9	(501.6)	(18,815.0)	(gas well)
Venture B-13	195	44°02'11.61"	Rowan	80-08-17	33.8	(110.9)	5,368.0	P&A
Mobil et al		59°32'03.54"	Juneau	81-06-06	24.7	(81.0)	(17,611.0)	(gas well)
Venture B-43	202	44°02'00.72"	Rowan	81-07-06	33.8	(110.9)	5,872.0	P&A
Mobil et al		59°36'37.37"	Juneau	82-04-25	20.4	(66.9)	(19,265.0)	(gas well)
Venture B-52	224	44°01'12.88"	Rowan	83-01-19	34.0	(111.5)	5,960.0	P&A
Mobil et al		59°38'07.76"	Juneau	83-10-27	19.5	(65.0)	(19,554.0)	(gas well)
Venture D-23	178	44°02'14.86"	Gulftide	78-11-28	31.7	(104.0)	4,945.0	P&A
Mobil-Texaco-PEX		59°34'24.72"		79-06-16	20.1	(65.9)	(16,224.0)	(gas well)
Venture H-22	232	44°01'24.13"	Zapata	83-07-26	38.1	(125.0)	5,944.0	P&A
Mobil et al		59°33'06.14"	Scotian	84-04-16	24.0	(78.7)	(19,501.0)	(gas well)
Venture 1 O-32	349	44°01'59.38"	Rowan	98-06-20	40.0	(131.2)	5,314.0	SG
SOEI		59°34'57.19"	Gorilla II	99-11-05	22.0	(72.2)	(17,434.0)	(gas well)
Venture 2 O-32	350	44°01'59.48"	Rowan	98-06-12	40.0	(131.2)	630.0	SG
SOEI		59°34'57.06"	Gorilla II	01-07-30	22.0	(72.2)	(2,066.0)	(gas well)
Venture 3 O-32	351	44°01'59.47"	Rowan	98-06-18	40.0	(131.2)	5,110.0	SG
SOEI		59°34'57.20"	Gorilla II	99-10-29	22.0	(72.2)	(16,765.0)	(gas well)
Venture 4 O-32	352	44°01'59.39"	Rowan	98-06-16	40.0	(131.2)	5,469.0	SG
SOEI		59°34'57.05"	Gorilla II	99-10-23	22.0	(72.2)	(17,943.0)	(gas well)
Venture 5 O-32	353	44°01'59.46"	Rowan	98-06-14	40.0	(131.2)	6,029.0	SG
SOEI		59°34'57.34"	Gorilla II	00-04-12	22.0	(72.2)	(19,780.0)	(gas well)
Venture 6 O-32	376	44°01'59.55"	Galaxy II	02-05-16	57.2	(187.6)	6,025.0	PROD.
ExxonMobil		59°34'57.33"		02-10-23	22.5	(73.8)	(19,767.0)	(gas well)

Well Name	D#	Latitude Longitude	Drilling Unit	Spud Rig Release yy/mm/dd	RT Elevation Water Depth m (ft)		Total Depth m (ft)	Status (Classification)
Venture 7 O-32	397	44°01'59.56"	Galaxy II	05-08-05	60.2	(197.5)	6,483.0	PROD.
ExxonMobil		59°34'57.21"		05-12-24	22.0	(72.1)	(2,126.9)	(gas well)
W. Chebucto K-20	296	43°39'44.63"	Bow Drill II	86-04-05	22.8	(74.8)	5,369.0	P&A
Husky/Bow Valley et al		59°47'32.44"		86-08-11	93.6	(307.1)	(17,614.0)	(gas show)
Wenonah J-75	164	43°34'34.44"	Sedco H	76-09-26	29.9	(98.1)	3,670.0	P&A
Petro-Canada-Shell		60°26'13.73"		76-11-15	66.7	(218.8)	(12,040.0)	(dry)
W. Esperanto B-78	216	44°47'03.40"	Vinland	82-08-22	23.3	(76.4)	5,703.0	P&A
Petro-Canada et al		58°26'11.22"		83-05-05	91.1	(298.9)	(18,711.0)	(dry)
W. Olympia O-51	277	44°00'47.80"	Rowan	85-06-23	38.0	(124.6)	4,816.0	P&A
Mobil et al West		59°53'03.64"	Gorilla I	85-11-09	38.4	(127.9)	(15,800.0)	(gas well)
W. Venture B-92	N/A	44°01'08.51"	Glomar	84-10-24	37.0	(121.4)	722.0	P&A ser. relief
Mobil et al West		59°43'59.68"	Labrador 1	84-12-13	42.0	(137.8)	(2,369.0)	(dry)
W. Venture C-62	252	44°01'02.78"	Rowan	84-05-19	33.8	(110.9)	5,522.0	P&A
Mobil et al		59°40'00.93"	Juneau	85-03-23	16.0	(54.1)	(18,117.0)	(gas well)
W. Venture N-01	269	44°00'58.80"	Rowan	85-01-20	38.1	(12.5)	3,632.0	P&A ser. relief
Mobil et al West		59°45'51.69"	Gorilla III	85-06-30	40.1	(131.6)	(11,916.0)	(dry)
W. Venture N-91	249	44°00'45.82"	Zapata	84-04-19	39.3	(128.9)	5,547.0	P&A
Mobil et al		59°44'27.36"	Scotian	85-07-07	38.1	(125.0)	(18,199.0)	(gas well)
Weymouth A-45	391	43°04'01.93"	Erik Raude	03-10-27	25.0	(82.0)	6,520.0	P&A
EnCana Shell		60°36'16.81"		04-05-08	1,689.7	(5,543.6)	(21,391.1)	(dry)
Whycocomagh N-90	304	43°39'50.83"	Sedco 710	87-04-20	24.1	(79.0)	3,535.5	P&A
Canterra et al		60°28'03.71"		87-05-26	67.7	(222.1)	(11,599.4)	(dry)
Wyandot E-53	18	44°52'20.70"	Sedco H	70-11-07	31.4	(103.0)	3,049.0	P&A
Shell		59°23'54.05"		70-12-14	121.0	(397.0)	(10,005.0)	(oil show)