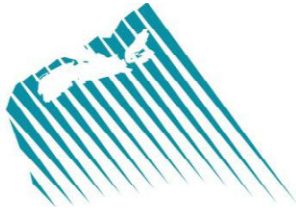


**CNSOPB**



CANADA-NOVA SCOTIA  
OFFSHORE PETROLEUM BOARD

---

**INFORMATION ON WELL DATA, GEOLOGICAL DATA,  
AND  
GEOPHYSICAL DATA**

February 2012

## **BOARD INFORMATION**

### ***Head Office***

Canada - Nova Scotia Offshore Petroleum Board  
6th Floor, TD Centre  
1791 Barrington Street  
Halifax, Nova Scotia  
B3J 3K9  
Canada

Phone: (902) 422-5588  
Fax: (902) 422-1799  
URL: <http://www.cnsopb.ns.ca>

### ***Geoscience Research Centre***

Canada - Nova Scotia Offshore Petroleum Board  
Geoscience Research Centre  
201 Brownlow Avenue  
Suite 27  
Dartmouth, Nova Scotia  
B3B 1W2  
Canada

Phone: (902) 468-3994  
Fax: (902) 468-4584  
E-mail: [mverrall@cnsopb.ns.ca](mailto:mverrall@cnsopb.ns.ca)

Supervisor, Geoscience Research Centre

Mary Jean Verrall

## CONTENTS

|  |           |
|--|-----------|
| <b>1. INTRODUCTION</b>   | <b>1</b>  |
| <b>A. APPLICABLE LEGISLATION</b>   | <b>1</b>  |
| <b>B. AREA OF JURISDICTION</b>   | <b>1</b>  |
| <b>C. DISCLOSURE OF TECHNICAL DATA</b>   | <b>1</b>  |
| <b>D. GEOSCIENCE RESEARCH CENTRE</b>   | <b>2</b>  |
| <b>E. EXPLANATION OF PROGRAM NUMBERS FOR GEOLOGICAL AND GEOPHYSICAL PROGRAMS</b> | <b>5</b>  |
| <b>2. RELEASED GEOLOGICAL and RELATED REPORTS</b>                                | <b>7</b>  |
| <b>3. RELEASED PHYSICAL ENVIRONMENTAL REPORTS</b>                                | <b>9</b>  |
| <b>4. RELEASED SAMPLE REPORTS</b>  | <b>16</b> |
| <b>5. RELEASED WELLSITE SURVEY REPORTS</b>                                       | <b>21</b> |
| <b>6. RELEASED GEOPHYSICAL REPORTS</b>   | <b>26</b> |
| <b>7. DIRECTORY OF OFFSHORE WELLS</b>  | <b>43</b> |

## 1. INTRODUCTION

This publication contains a directory of wells and lists released geological and geophysical reports available from the Canada-Nova Scotia Offshore Petroleum Board ("CNSOPB" or the "Board") for the Nova Scotia offshore area. Data on significant discoveries and the ownership of interests is also included.

### A. APPLICABLE LEGISLATION

Petroleum exploration and production activities in the Nova Scotia offshore area are administered by the Board pursuant to the *Canada-Nova Scotia Offshore Petroleum Resources Accord Implementation Act*, S.C. 1988, c.28, as amended, and the *Canada-Nova Scotia Offshore Petroleum Resources Accord Implementation (Nova Scotia) Act*, S.N.S. 1987, c.3, as amended (the "legislation") and regulations made thereunder. The Board has issued Guidelines in respect of certain matters, a list of which is included in Section 10.

### B. AREA OF JURISDICTION

The geographic limits of the Board's jurisdiction are set out in Schedule I to the legislation (see Fig. 1). This area (the "offshore area") is subject to an area of French jurisdiction around the islands of St. Pierre and Miquelon which is not reflected in Schedule I as it resulted from a later adjudication. The French maritime boundary is described in Appendix II.

### C. DISCLOSURE OF TECHNICAL DATA

Sections 122 and 121 respectively of the federal and provincial legislation deal with the confidentiality and disclosure of information provided for purposes of the legislation.

Information or documentation in respect of an **exploratory well** is held confidential for 2 years following the well termination date. The confidentiality period for a delineation **well** is 2 years following the termination date of the discovery well on the same prospect, or 90 days following the termination date of the delineation well, whichever is longer. For a **development well**, the confidentiality period is 2 years following the termination date of the discovery

well on the same prospect, or 60 days following the termination date of the development well, whichever is longer. General information on a well, including its name, operator, classification, location, identity of the drilling unit, depth, and operational status of the drilling program may be obtained from the Board on a current basis.

Information and documentation in respect to **non-exclusive geophysical work** is held confidential for at least 10 years following the completion date of the work. The geophysical regulations define a non-exclusive survey as a geophysical operation that is conducted to acquire data for the purpose of sale, in whole or in part, to the public.

Information and documentation in respect to **exclusive geological** or **exclusive geophysical work** is held confidential for a period of 5 years following the completion date of the work. The date of completion is considered to occur 6 months after the field program is terminated. Operators are required to submit comprehensive reports on each program conducted in search of hydrocarbons in the offshore area. These reports, together with associated items such as interpretive maps, seismic sections, well logs, cores, cuttings, fluid samples and paleontological materials derived from such programs are held confidential for the requisite period, then released for public examination.

Over 432 released **geological and geophysical reports** covering the Nova Scotia offshore area are currently available for inspection (see Sections 2 to 4). The Board publication, *Geophysical and Geological Programs in the Nova Scotia Offshore Area - Guidelines for Work Programs, Authorizations and Reports* describes the required format and general content of a typical geological/geophysical report. Each report generally consists of three parts. The first is the operations report, which includes a location map, summary

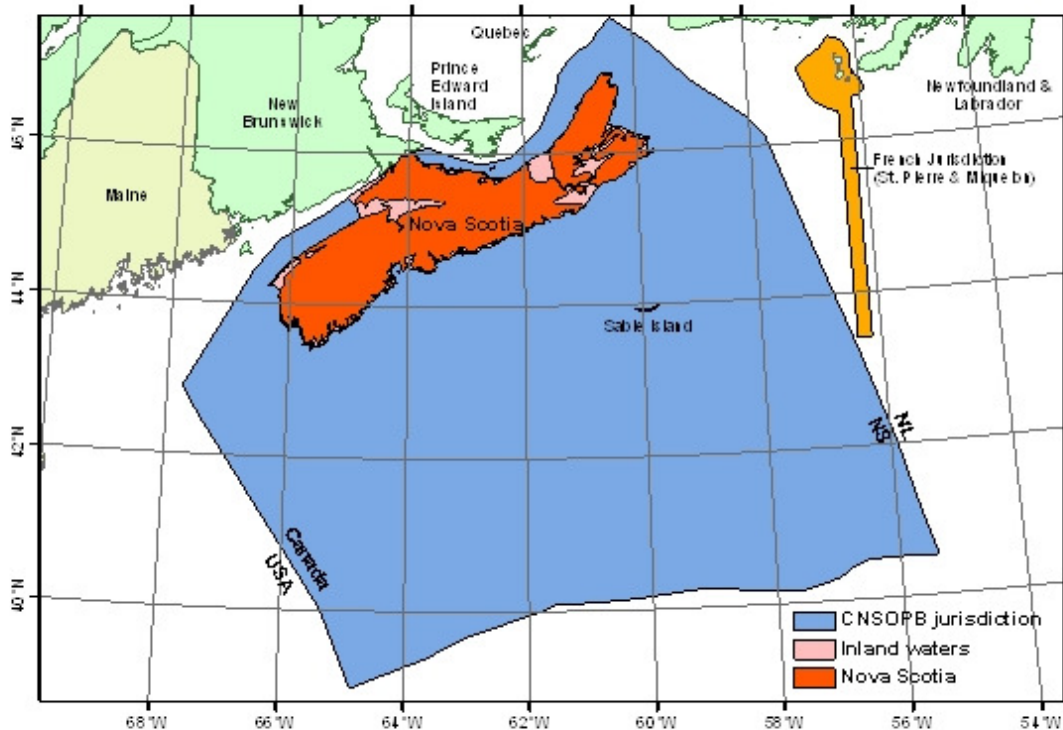


FIGURE 1: Limits of Offshore Area

of operations statistics, description of data acquisition equipment and field procedures. The second part reports on computer processing of data, which is of particular relevance for geophysical reports. The final part is the interpretation report. This includes a written discussion with illustrations of the final processed data and interpretive maps. Copies of all final processed seismic sections and shotpoint location maps are included. Other interpretive aids such as seismic modeling studies or synthetic seismograms may also be included. **The completeness and quality of reports vary depending on the operator and the program vintage.**

There are approximately 207 **well history reports** currently available for the Nova Scotia offshore area. The required format and general contents of a well history report are described in the Board's publication, *Procedures and Guidelines for the Nova Scotia Offshore Petroleum Drilling Regulations*. A well history report includes a

summary of drilling operations, description of cuttings, cores of all types, fluid samples acquired, discussion of geology, evaluation programs, test results, etc. Final copies of all well logs are also available.

#### D. GEOSCIENCE RESEARCH CENTRE

The Board's Geoscience Research Centre facility provides geological and geophysical information and services for the Nova Scotia offshore area. In addition to staff offices, the facility consists of three working areas: a data and core storage warehouse, public viewing rooms, and a micropaleontology laboratory. Subsurface samples from approximately 207 offshore petroleum exploration and development wells drilled by industry in the Nova Scotia offshore area are stored at the facility. The facility curates a current hard copy inventory

and microfiche record of geological, well history and geophysical information. Examination space, information reports, and materials for study are made available to the public free of charge, with hours of operation weekdays from 8:00 a.m. to 4:00 p.m.

A Facility Supervisor, a Data Management Centre Technician, two Geological Technologists, and an Administrative Assistant constitute the staff of the Geoscience Research Centre. The staff provides access to well information, geophysical, geological reports, cores, cuttings and other well samples for research and sampling purposes. The facility's 1,200 square metre data and core storage warehouse archives all geological and geophysical reports, well site survey reports and several types of subsurface samples. The staff maintains and curate cores, cuttings, and prepared residues for examination by academic, industry and government scientists. Unwashed cutting samples are kept in plastic-lined cloth bags, and geochemistry samples have been dried and are now stored in plastic bags. Bulk unwashed cutting samples, and all drill cores are stored in cardboard boxes which in turn are stored on racked pallets. Washed cuttings samples are in 25 ml plastic vials arranged in trays which are stored in steel cabinets. Sidewall cores are stored in 25 ml plastic vials in steel storage cabinets, as are the collections of picked micropaleontology slides. Samples from well site seabed surveys are also catalogued and maintained as are fluid samples.

Each well is assigned a unique reference number (known as a **D number**) and all related subsurface materials are identified by means of that number. A listing of all wells appears in Section 7: Directory of Offshore Wells.

The facility's public examination areas consist two data viewing rooms for viewing geological and geophysical reports and data as well as two individual core examination rooms each containing tables for studies of cores and samples. A binocular microscope and other sample examination aids are available to users upon request. Requests

to sample materials in storage must be submitted in writing with an outline of the type of study to be conducted. If permission to sample is granted, the size of sample is determined with reference to the amount remaining and also the nature of the study. The amount of sampling and the degree of duplication of studies is strictly regulated. All unused sample must be returned to the facility and one copy of the results of the study are to be forwarded to the Board's office in Dartmouth.

The facility's laboratory has the capability to process samples from all wells for extraction of micropaleontological material. Access to the laboratory is provided for users wishing to prepare their samples taken for palynology processing, vitrinite reflectance, petrology, etc. The laboratory also contains equipment for petrological determinations, including a rock saw to sample cores for thin sections.

The GRC also houses the Board's digital Data Management Centre (DMC).

### **Data Management Centre (DMC)**

The Board's digital Data Management Centre (DMC) is the first data management centre in North America to offer free of charge publicly accessible digital offshore petroleum data via a web-based interface. The DMC provides for the submission, loading, management and distribution of entitled petroleum data. Initially, the DMC will manage and distribute the following digital petroleum data: well data (i.e. logs and reports), seismic image files (i.e. PDF, and TIFF), Geographic Information Systems data (i.e. Licences, wells, bathymetry etc.), and production data. In the future the DMC could be expanded to include operational, safety, environmental, fisheries data, etc. The DMC is located in a dedicated computer room in the Board's Geoscience Research Centre in Dartmouth, Nova Scotia.

The DMC provides global access to quality data, significantly improving efficiency in obtaining and analyzing petroleum

data, managing entitlements and reducing the cost of regulatory compliance for industry. Additional benefits of the DMC include prevention of data loss, reduction in data storage costs and facilitating scientific research by the regulatory Boards, industry, governments, universities, etc. The DMC was officially opened on October 2, 2007. Schlumberger Information Solutions (SIS) designed, installed and configured the DMC hardware, software, and user workflows. The loading and verification of all offshore data, dating back to 1960, is ongoing. The Board will prioritize the loading of data in response to user requests, and update the DMC website on a regular basis so users can determine when new data is available.

As of January 2011, complete data sets for 207 offshore Nova Scotia wells, 24 data

sets from wells in other jurisdictions and 308 seismic programs (approximately 15,104 items), have been loaded into the DMC. Along with the PDF & TIFF images available in the DMC, we also have two seismic programs (8620-N011-001E, and NS24-N011-001E) with full SEG Y, SEG D, and the gathers available on the DMC FTP site.

Fun fact: The DMC's eight servers are named after shark's which swim in the waters offshore Nova Scotia:

- Tiger
- Blue
- Thresher
- Greenland
- Great White
- Whale
- Bull
- Hammerhead

### Facility Facts (April 2011)

|  |                     |
|--|---------------------|
| Wells drilled in N.S. offshore area          | 207                 |
| Spud date of oldest well (Sable Island C-67) | June 7, 1967        |
| Drill core in storage                        | 4,854 boxes         |
| Metres of drill core in storage              | 6,356.68 m          |
| Sidewall cores in storage                    | 14,508 vials        |
| Washed cuttings in storage                   | 166,182 vials       |
| Unwashed cuttings in storage (approx.)       | 139,746 bags        |
| Geochemistry samples in storage (approx.)    | 11,549 bags         |
| Size of data and sample storage repository   | 1,200m <sup>2</sup> |
| Released geological & geophysical reports    | over 432            |

## E. EXPLANATION OF PROGRAM NUMBERS FOR GEOLOGICAL AND GEOPHYSICAL PROGRAMS

The following released geological, geophysical and related reports (Sections 2, 3 and 4) are listed alphabetically by program number and company code. Upon approval of an application to conduct a geophysical or geological program, a unique program number is assigned to the project by the regulator. For programs completed prior to January 1990 this number was assigned by the federal Department of Energy, Mines and Resources (EMR). The number is coded to contain:

- the geographic region to which the program relates;
- the type of geophysical or geological work proposed;
- the company operating the program; and
- the sequential number of that type of program operated by that company.

For example, a typical program number for offshore Nova Scotia could be 8624-M003-044E. It follows the format ABCD-EFGH-IJKL, each sequence of letters corresponding to an alphanumeric code:

- AB (86 in the example) identifies an east coast offshore exploration program. NS identifies an offshore Nova Scotia program completed after January, 1990 and approved by the Canada-Nova Scotia Offshore Petroleum Board.
- CD (24 in the example) identifies the type of geological/geophysical work where:
  - 20 - combined geophysical survey
  - 21 - aeromagnetic survey
  - 23 - seafloor gravity survey
  - 24 - seismic reflection survey
  - 25 - seismic refraction survey
  - 26 - shallow seismic, seabed survey, geotechnical
  - 27 - (re)processing, (re)interpretation
  - 28 – geophysical (other)
  - 29 – onshore geophysical
  - 30 - combined geological program

- 31 - offshore geological program
- 32 - paleontological/palynological study
- 33 - geochemical study
- 34 - petrography
- 35 - purchase of geological studies
- 36 - isotope age dating
- 37 - in-house geological studies
- 39 - onshore geological surveys
- 40 - research program/environmental
- 41 – environmental data
- 42 – chemistry & toxicity
- 43 – aesthetic environmental
- 45 – pipeline geophysical survey
- 44 – basis of design
- 46 – \*geotechnical
- 48 – development plan

\*note: prior to 2004 geotechnical programs were classified with 26-shallow seismic, seabed

- EFGH (M003 in the example) is the operator or company code where:

- A004 Amoco
- A012 Austin Exploration
- A014 Aqua Terra
- A024 Amoco Production Co.
- B003 B.P.O.P.
- B004 Banner Petroleum Limited
- B011 Bow Valley
- C002 Canadian Export Oil & Gas
- C004 Chevron Canada
- C012 Canadian Reserve Oil and Gas
- C015 Caravel / Catalina Exploration
- C020 Canadian Superior
- C033 Canadian Ashland Exploration
- C034 Central Del-Rio Oils
- C039 Cavalier Energy Inc.
- C055 Canterra
- C146 Canadian Superior Energy Inc.
- D001 Digicon Exploration
- D003 Dome Petroleum
- D004 Delta Exploration
- D009 Dome Canada
- D015 Dalhousie University
- E006 Exxon
- E040 ExxonMobil Canada Limited
- E043 EnCana Corporation
- G001 Gulf Canada
- G005 Geophysical Services

|      |                                    |      |                                  |
|------|------------------------------------|------|----------------------------------|
| G011 | Geophoto Services                  | S024 | Seiscan Delta                    |
| G014 | Great Plains Development           | S047 | Simin Expl. Consultants Ltd      |
| G020 | Gebco (US) Inc.                    | S092 | St. Mary's University            |
| G026 | Imperial Oil Resources             | T007 | Texaco Canada                    |
| G041 | Government of Canada               | T013 | Transalta Oil & Gas              |
| G065 | Geco-Prakla                        | T021 | Texaco Canada Resources          |
| G075 | GX Technology                      | T036 | Teknica Resource Develop. Ltd    |
| H005 | Home Oil                           | T063 | TGS-NOPEC Geophysical<br>Company |
| H006 | Husky Oil Operations Ltd.          | U003 | Union Oil                        |
| H007 | Hudson's Bay Oil and Gas           | V001 | Voyager Petroleums               |
| I003 | Imperial Oil Resources Limited     | V003 | Veritas Seismic                  |
| J001 | Esso Resources                     | W006 | Western Decalta                  |
| J008 | ICG Resources                      | W013 | Western Geophysical              |
| J013 | Jebco Surveys                      | W030 | Western-Geo Canada               |
| L023 | Lasmo Nova Scotia Limited          |      |                                  |
| K006 | Kerr, J. William & Associates      |      |                                  |
| M003 | Mobil Oil Canada                   |      |                                  |
| M006 | Murphy Oil                         |      |                                  |
| M013 | McDermott, J. R.                   |      |                                  |
| M055 | Marathon Canada Limited            |      |                                  |
| N005 | Norcen Energy Resources            |      |                                  |
| N011 | Nova Scotia Resources Limited      |      |                                  |
| O011 | Onaping Resources Limited          |      |                                  |
| P003 | PanCanadian Petroleum<br>Limited   |      |                                  |
| P011 | Pacific Petroleums                 |      |                                  |
| P028 | Petro-Canada                       |      |                                  |
| R005 | Robertson Research -<br>N. America |      |                                  |
| S001 | Siebens Oil & Gas                  |      |                                  |
| S003 | Shenandoah Oil                     |      |                                  |
| S006 | Shell Canada Resources             |      |                                  |
| S008 | Sun Oil                            |      |                                  |
| S009 | Scurry-Rainbow Oil                 |      |                                  |
| S014 | SOQUIP                             |      |                                  |
| S016 | Sultan Exploration                 |      |                                  |

- IJK (044 in the example) is the sequential program number of that type of program by that operator.
- L (E in the example) is the program type identifier where:
  - E - exclusive program
  - P - participation or speculative program
  - DT - data trade
  - DA - data acquisition

Therefore, the program number 8624-M003-044E indicates the 44th seismic reflection survey in the East Coast Offshore Region conducted exclusively for Mobil, and carried out prior to January, 1990.

## 2. RELEASED GEOLOGICAL and RELATED REPORTS

| Program #                            | Completion Date | Report Description  |
|--------------------------------------|-----------------|---|
| 8630-A012-002P                       | 1974            | Regional Participation Survey-Stratigraphic Logging and Formation Evaluation for 34 Wells-Scotian Shelf, Grand Banks, & Gulf of St. Lawrence  |
| 8631-A004-001E                       | 18-Jul-65       | Corehole and Sampling Project, Grand Banks, 1965  |
| 8646-D015-002E                       | 7-Aug-85        | Sable Island Borehole Project Centre for Marine Geology, Dalhousie University and Atlantic Geoscience Centre  |
| 8631-K006-001P                       | 1986            | Geology and Petroleum Potential of the Scotian Shelf  |
| 8631-M003-001E                       | 30-Aug-65       | Geological Report on Sable Island Corehole Program  |
| 8631-M003-002E                       | 11-Sep-72       | Soil & Foundation Investigation, Sable Island for Thebaud P-84  |
| 8631-S006-001E                       | 21-Sep-70       | Marine Hydrocarbon Survey for Chippewa, West & East Orpheus   |
| 8631-S006-002E                       | 12-Aug-71       | Marine Hydrocarbon Survey Continental Slope, for Chippewa, Tuscarora, Jason & Roseway Basins Area   |
| 8631-S006-003E                       | 1971            | Soil & Foundation Investigation Reports for: Oneida O-25, Naskapi N-30, Huron P-96, Onondaga O-95, MicMac J-77, Abenaki L-97  |
| 8632-A004-003E                       | 15-Apr-71       | Palynologic Analysis, Brion Island # 1 Well   |
| 8633-A004-001E                       | 19-Aug-71       | Report on Source Rock Evaluation - Brion Island No. 1   |
| 8633-A004-004E                       | 27-Sep-87       | Geochem SNIFFER Report, Sable Island, Bay of Fundy  |
| 8633-A004-005E                       | 27-Sep-87       | Sable Island Airborne, Air Trace Geochem Survey   |
| 8633-R005-001P                       | 1977            | Geochem Evaluation and Biostratigraphy Reports for: Bluenose G-47, Dauntless D-35, Eagle D-21, MicMac H-86, Mohawk B-93, Mohican I-100, Oneida O-25, Onondaga E-84, Primrose N-50, Sauk A-57, Thebaud P-84, Triumph P-50        |
| NS33-T062-002P                       | 8-Oct-00        | Nova Scotia Consortium Surface Geochemical Exploration Program Report   |
| 8635-B003-001DA                      | 1972            | Micropaleontology, Palynology, & Stratigraphy of: Huron P-96, Tors Cove D-52, Sable Island C-67, Wyandot E-53, Grand Falls H-09; Biostratigraphy Reports on: Oneida O-25, MicMac J-77, Naskapi N-30, Mohawk B-93, Onondaga E-84 |
| 8635-C002-001E                       | 30-Dec-70       | Regional Geology Eastern Canada Offshore  |
| 8635-C004-001DA                      | 30-Dec-70       | Regional Geological Interpretation, Misaine and Green Bank Areas  |
| 8635-C020-002DA /<br>8635-C020-003DA | 28-Feb-75       | 1974 Stratigraphy and Reservoir Analysis, Scotian Shelf   |

| <b>Program #</b> | <b>Completion Date</b> | <b>Report Description</b>   |
|------------------|------------------------|---|
| 8635-M013-001E   | 30-Dec-70              | Regional Study of Atlantic Offshore Petroleum Potential   |
| 8636-G041-001E   | 30-Dec-59              | Geology of Maritimes Related to Petroleum Possibilities 1959  |
| 8637-G011-001P   | 30-Dec-72              | Geodata Analysis Maritimes and Adjacent Shelf Areas   |
| 8637-M006-001E   | 31-May-75              | Report on Potential Gas Reserves Cape Breton Area, North Sydney I-05  |
| 8645-M003-006E   | 14-Sep-84              | 1984 Venture Development Project-Offshore Pipeline Geophysical Survey, Offshore to Country Harbour  |
| 8637-W006-001E   | Jan-70                 | Regional Geology and Petroleum Prospects-Maritime Region  |
| 8645-M03-06E     | 1983                   | Venture Development Project – Offshore Pipeline Geophysical Survey, 1983 Offshore to Country Harbour.   |
| 8639-A004-001E   | 3-Aug-66               | Stratigraphic Studies, Nova Scotia and Magdalen Island Areas  |
| 8639-C020-001DA  | 22-Dec-72              | Micropaleontology, Palynology and Stratigraphy of: Missisauga H-54, Omeida O-25, Sable Island C-67, Onondaga O-95, Onondaga E-84, Abenaki L-57, MicMac H-86, MicMac J-77, Wyandot E-53, Cree E-35, Mohawk B-93, Iroquois J-17, Huron P-96, Naskapi N-30 |
| 8639-H007-001E   | 24-Aug-68              | Maritimes Geological Field Party, Cape Breton and Magdalen Island   |
| 8639-M003-001E   | 1-Sep-69               | Geological Report- Maritime Provinces, W. Newfoundland  |
| 8639-M003-002E   | 30-Jun-72              | Soil Investigation- West Sable Island, Sable Island XH1038  |
| 8639-S006-001E   | 2-Oct-72               | Reconnaissance Geological Examination of Carboniferous Strata in Nova Scotia and New Brunswick.   |
| 8639-S016-001E   | 19-Feb-72              | Geologic Evaluation of Chedabucto Bay   |

## 3

## RELEASED PHYSICAL ENVIRONMENTAL REPORTS

| Program No.     | Completion Date | Report Description  |
|-----------------|-----------------|---|
| 8640-H007-002E  | 1980            | Current Meter Observations - Beaton Point E-47 and Beaton Point F-70  |
| 8640-J001-004E  | 1977            | Ice and Oceanographic Investigations of <b>Davis Strait</b>   |
| 8640-J001-011E  | 1978            | Wave Climate Study of <b>Southern Davis Strait</b>  |
| 8640-J001-011E  | 1978            | A Proposed Weather Forecasting System for <b>Southern Davis Strait</b>  |
| 8640-J001-011E  | 1978            | A Climatological Study of the <b>Southern Davis Strait</b>  |
| 8640-J001-011E  | 1978            | Comparison of " <b>Asiak</b> " Buoy Data to Data Extracted from Synoptic Weather Maps                               |
| 8640-J001-011E  | 1978            | Comparison of Meteorological Data from <b>Brevoort Island</b> and the " <b>Asiak</b> " Buoy                         |
| 8640-M003-006E  | 1978            | A Study of Oil Spill Movement in the Vicinity of <b>Sable Island</b> : Phase 1, Phase 2, and Amendment to Phase 2   |
| 8640-M003-029E  | 1980            | Metoc Wave Chart Analysis- <b>Grand Banks</b> and Sable Island  |
| 8640-M003-117E  | Nov-84          | Current Measurements at <b>West Venture C-62</b> , Scotian Shelf  |
| 8640-M003-117E  | 23-Mar-85       | Physical Environmental Report, Meteorological and Sea State Data Analysis- <b>West Venture C-62</b> , Scotian Shelf |
| 8640-M003-121E  | 17-Sep-85       | Physical Environmental Report, Current Meter Data Analysis- <b>Thebaud I-93</b> , Scotian Shelf                     |
| 8640-M003-123E  | Apr-85          | Data Report, Current Measurements- <b>West Venture N-01</b> , Scotian Shelf   |
| 8640-M003-004P  | 1973            | Design of a Hydrocarbon Baseline Study of the Scotian Shelf- <b>Banquereau Bank</b>                                 |
| 8640-S006-002P  | Oct-71          | Nova Scotia Environmental Report- <b>Laurentian Channel, Georges Bank, Banquereau Bank</b>                          |
| 8640-S006-003E  | 21-Aug-73       | Geophysical Report on Testing of New Seismic Equipment, Super-Long Air Gun, Sydney Basin                            |
| 8640-S006-003P  | Aug-73          | Geophysical Reports on Experimental Testing of New Seismic Equipment- <b>Sydney Basin</b>                           |
| NS41-C004-001DA | 18-Jun-2001     | Characterization of Benthic Habitat in the <b>Mahone Block</b> Exploration Licence 2359                             |
| NS41-C146-001DA | 23-Sep-2002     | Characterization of Benthic Habitat in the <b>Mayflower Block</b> Exploration Licence 2406                          |
| NS41-E040-001E  | 21-Dec-2001     | 2001 Environmental Monitoring Report - <b>Thebaud and South Venture</b>   |

| <b>Program No.</b>  | <b>Completion Date</b> | <b>Report Description</b>   |
|---|------------------------|---|
| NS41-E040-02E   | 2004                   | 2004 Physical Oceanographic Data Report – <b>North Triumph, Thebaud and Venture-South Venture</b> sites.            |
| NS41-E040-03E   | 2005                   | 2005 Physical Oceanographic Data Report for <b>North Triumph, Thebaud and Venture- South Venture</b> sites.         |
| NS41-E040-04E   | 2006                   | 2006 Annual Environmental –Meteorological Data Report – <b>Thebaud</b>  |
| NS41-E040-04E   | 2006                   | 2006 Wind and Sea State Forecast Verification for the ExxonMobil Sable Offshore Energy Project                      |
| NS41-E040-04E   | 2006                   | 2006 Physical Oceanographic Data Report – Current Data for <b>North Triumph, Thebaud, Venture and South Venture</b> |
| NS41-E040-04E   | 2006                   | 2006 Physical Oceanographic Data Report – Wave Data for <b>North Triumph, Thebaud, Venture and South Venture</b>    |
| NS41-E040-05E   | 2007                   | 2007 Wind and Sea State Forecast Verification for the ExxonMobil Sable Offshore Energy Project                      |
| NS41-E040-05E   | 2007                   | 2007 Physical Oceanographic Data Report – Wave Data for <b>Thebaud, Venture and South Venture</b>                   |
| NS41-E040-05E   | 2007                   | 2007 Physical Oceanographic Data Report – Current Data for <b>Thebaud</b>   |
| NS41-E040-05E   | 2007                   | 2007 Annual Meteorological and Sea State Data Report  |
| NS41-E040-006E  | 2008                   | Physical Oceanographic Data Reports: 2008 Wave Data - <b>Thebaud</b>  |
| NS41-E040-006E  | 2008                   | Physical Oceanographic Data Reports: 2008 Current Data - <b>Thebaud</b>   |
| NS41-E040-006E  | 2008                   | Physical Oceanographic Data Reports: 2008 Wave Data - <b>Venture and S. Venture</b>                                 |
| NS41-E040-006E  | 2008                   | Physical Oceanographic Data Reports: 2008 Wave Data - <b>North Triumph</b>  |
| NS41-E040-006E  | 2008                   | Physical Oceanographic Data Reports: 2008 Current Data - <b>North Triumph</b>                                       |
| NS41-E040-008E  | 2009                   | Physical Oceanographic Data Reports: 2009 Current and Wave Data - <b>Thebaud and Venture</b>                        |
| NS41-E040-009E  | 31-Dec-10              | Sable Offshore Energy Project 2010 Annual Safety and Environmental Report   |
| NS41-E043-001E  | 15-Sep-02              | Physical Oceanographic Data Reports 2002 <b>Stonehouse Block</b>  |
| NS41-E043-002E<br>xref NS26-P003-002E ,<br>NS26-P003-005E,<br>NS26-E043-001E,<br>NS26-E043-004E | 28-Jan-08              | Benthic Study for the <b>Deep Panuke</b> Subsea Pipeline and Production Facility                                    |
| 8641-H005-001E  | 13-Oct-84              | Meteorological Data Analysis- <b>Louisbourg J-47</b> , Scotian Shelf  |

| <b>Program No.</b>                     | <b>Completion Date</b> | <b>Report Description</b>  |
|--|------------------------|--|
| 8641-H005-002E<br>X-ref 8641-H5-3E-1   | 30-May-85              | Meteorological Data Analysis, Current Meter Data Analysis - <b>Citadel H-52</b> , Scotian Shelf                      |
| 8641-11-H5-1-1-AC1                     | 6-Feb-84               | Current Meter Data Analysis, Real Time Currents Recorded from the Louisbourg J-47, Scotian Shelf                     |
| 8641-11-H5-1-1-AC2                     | 15-Apr-84              | Current Meter Data Analysis- <b>Louisbourg J-47</b> , Scotian Shelf  |
| 8641-11-H5-1-1- AC3                    | 20-Jun-84              | Current Meter Data Analysis- <b>Louisbourg J-47</b> , Scotian Shelf  |
| 8641-11-H5-1-1- AC4                    | 27-Aug-84              | Current Meter Data Analysis- <b>Louisbourg J-47</b> , Scotian Shelf  |
| 8641-11-H5-1-1- AC5                    | 7-Oct-84               | Current Meter Data Analysis- <b>Louisbourg J-47</b> , Scotian Shelf  |
| 8641-11-H5-1-2- AC1                    | 23-Apr-85              | Current Meter Analysis- <b>Citadel H-52</b> , Scotian Shelf  |
| 8641-11-H5-1-2- AC2                    | 24-May-85              | Current Meter Analysis- <b>Citadel H-52</b> , Scotian Shelf  |
| 8641-11-H5-1-2- AFM                    | 30-May-85              | Meteorological Data Analysis- <b>Citadel H-52</b> , Scotian Shelf  |
| 8641-H006-005E                         | 20-Aug-84              | Environmental Data Analysis Report- <b>South Griffin J-13</b> , Scotian Shelf  |
| 8641-H006-006E                         | 2-Aug-84               | Environmental Data Analysis Report- <b>ChebuctoK-90</b> , Scotian Shelf  |
| 8641-H006-007E                         | 1984                   | Meteorological Data Analysis- <b>Evangeline H-98</b> , Scotian Shelf   |
| 8641-H006-020E                         | 3-May-85               | Physical Environmental Data Report, Meteorology- <b>Hesper P-52</b> , Scotian Shelf                                  |
| 8641-H006-023E                         | 22-Dec-84              | Physical Environmental Data Report, Oceanography- <b>Hesper P-52</b> , Scotian Shelf                                 |
| 8641-11-H6-1-3- AF                     | Aug-86                 | Forecast Program Report- <b>West Chebucto K-20</b> , Scotian Shelf   |
| NS41-K018-001DA<br>xref NS26-J034-001P | Jun-01                 | Characterization of Benthic Habitat in <b>Pinehurst &amp; Pembroke Blocks</b> Exploration Leases 2396 & 2386         |
| 8641-M003-004E                         | 28-Jun-83              | Meteorological Data Analysis- <b>West Venture B-92</b> Scotian Shelf   |
| 8641-M003-005E                         | 12-Dec-84              | Oceanographic and Meteorological Design Parameters- <b>Venture H-22</b> and <b>West Olympia B-92</b> , Scotian Shelf |
| 8641-M003-006E                         | 25-Apr-82              | Environmental Data Analysis- <b>Venture B-43</b> , Scotian Shelf   |
| 8641-M003-006E                         | 24-Apr-82              | Report in Data Reduction and Processing- <b>Venture B-43</b> , Scotian Shelf   |
| 8641-M003-014E                         | 1982                   | The Physical Fate of Drilling and Production Discharges in the <b>Venture Field</b> .                                |
| 8641-M003-015E                         | 1982                   | Extreme Oceanographic Data – <b>Sable Island</b>   |
| 8641-M003-022E                         | 3-Jan-83               | Environmental Data Analysis- <b>South Venture O-59</b> , Scotian Shelf   |
| 8641-M003-023E                         | 10-Jan-83              | Environmental Data Analysis- <b>Olympia A-12</b> , Scotian Shelf   |
| 8641-M003-071E                         | Jul-85                 | Meteorological and Oceanographic Criteria Study-1985-Extreme Bottom Current Criteria Along the Pipeline Corridor     |

| <b>Program No.</b>   | <b>Completion Date</b> | <b>Report Description</b>   |
|----------------------|------------------------|---|
| 8641-M003-100E       | 29-Jun-85              | Physical Environmental Report, Meteorological and Sea State Data Analysis- <b>West Venture N-01</b> , Scotian Shelf |
| 8641-M003-101E       | 7-Jul-85               | Physical Environmental Report, Meteorological and Sea State Data Analysis- <b>West Venture N-91</b> , Scotian Shelf |
| 8641-M003-102E       | 20-Mar-85              | Physical Environmental Report, Current Meter Data Analysis- <b>West Venture B-92</b> , Scotian Shelf                |
| 8641-M003-103E       | 9-Nov-85               | Weather Forecast Verification- <b>West Olympia O-51</b> , Scotian Shelf   |
| 8641-M003-104E       | 22-Oct-85              | Physical Environmental Report, Current Meter Data Analysis- <b>West Olympia O-51</b> , Scotian Shelf                |
| 8641-11-M3-9-1- AMW  | 5-Jun-81               | Environmental Data Analysis- <b>Venture B-13</b> , Scotian Shelf  |
| 8641-11-M3-9-1- AMW  | Jul-82                 | Report on Data Reduction and Processing- <b>Venture B-13</b> , Scotian Shelf  |
| 8641-11-M3-9-5- AF   | 23-Mar-85              | Weather Forecast Verification- <b>West Venture C-62</b> , Scotian Shelf   |
| 8641-11-M3-9-6- AF   | 27-Sep-85              | Weather Forecast Verification- <b>Thebaud I-93</b> , Scotian Shelf  |
| 8641-11-M3-9-6- AM   | Oct-86                 | Final Well History Report, Meteorological and Sea State Data Analysis- <b>Thebaud I-93</b> , Scotian Shelf          |
| 8641-11-M3-9-6- AW   | 8-Aug-86               | Data Report, Wave Climate Report- <b>Thebaud I-93</b> , Scotian Shelf   |
| 8641-11-M3-10-3- AMW | 19-Jul-83              | Environmental Data Analysis- <b>Arcadia J-16</b> , Scotian Shelf  |
| 8641-11-M3-10-5- AF  | 7-Jul-85               | Weather Forecast Verification- <b>West Venture N-91</b> , Scotian Shelf   |
| 8641-11-M3-13-1- AF  | 29-Jun-85              | Weather Forecast Verification- <b>West Venture N-01</b> , Scotian Shelf   |
| 8641-11-M3-14-1- AM  | 9-Nov-85               | Physical Environmental Report, Meteorological Data Analysis- <b>West Olympia O-51</b> , Scotian Shelf               |
| 8641-11-M3-14-1- AW  | 8-Aug-86               | Data Report, Wave Climate Report- <b>West Olympia O-51</b> , Scotian Shelf  |
| 8641-11-M3-14-2- ACW | 26-Sep-86              | Final Well History Report, Current Meter and Wave Data Report- <b>Thebaud C-74</b> , Scotian Shelf                  |
| 8641-11-M3-14-2-AF   | 26-Sep-86              | Final Well History Report, Forecast Verification Report- <b>Thebaud C-74</b> , Scotian Shelf                        |
| 8641-11-M3-14-2- AM  | 26-Sep-86              | Final Well History Report, Meteorological Summary Report- <b>Thebaud C-74</b> , Scotian Shelf                       |
| 8641-P028-011E       | Nov-83                 | Oil Slick Trajectory and Blowout Analysis- <b>Albatross G-02</b> , Scotian Shelf                                    |
| 8641-P028-033E       | 1983                   | Currents Near St. Paul P-91 Drilling Location Data Report- <b>St. Paul P-91</b> , Cabot Strait                      |
| 8641-P028-034E       | 1984                   | Currents Near Bonnet P-23 Drilling Location Data Report- <b>Bonnet P-23</b> , Scotian Shelf                         |

| Program No.         | Completion Date | Report Description  |
|---------------------|-----------------|---|
| 8641-P028-036E      | 1985            | Weather and Sea State Forecasting, Final Summary Report- <b>Albatross B-13</b> , Scotian Shelf  |
| 8641-P028-036E      | 29-Mar-85       | Environmental Data Analysis, Final Report- <b>Albatross B-13</b> , Scotian Shelf  |
| 8641-P028-038E      | Aug-85          | Environmental Monitoring Services, Current Meter Data Report- <b>Albatross B-13</b> , Scotian Shelf   |
| 8641-P028-043E      | 8-Apr-85        | Environmental Data Analysis, Final Report- <b>Shelburne G-29</b> , Scotian Shelf  |
| 8641-P028-054E      | 1985            | Weather and Sea State Forecasting, Final Summary Report- <b>Shelburne G-29</b> , Scotian Shelf  |
| 8641-P028-055E      | Jun-86          | Physical Environmental Data Report, Oceanography, Cohasset A-52 Current Meter Program- <b>Cohasset A-52</b> , Scotian Shelf   |
| 8641-P028-056E      | 27-Mar-86       | Final Well History Report, Meteorological Data Analysis Report- <b>Cohasset A-52</b> , Scotian Shelf  |
| 8641-P028-057E      | Sep-86          | Final Well History Report, Forecast Verification Report- <b>Cohasset A-52</b> , Scotian Shelf   |
| 8641-11-P28-5-1- AC | Jun-86          | Physical Environmental Data Report, Oceanography, Cohasset A-52 Current Meter Program- <b>Cohasset A-52</b> , Scotian Shelf   |
| 8641-11-P28-5-1- AW | Jul-86          | Final Well History Report, Wave Data Report- <b>Cohasset A-52</b> , Scotian Shelf   |
| 8641-11-P28-5-2- AC | 1987            | Physical Oceanographic Data Report, Current Meter Data- <b>Como P-21</b> , Scotian Shelf  |
| 8641-11-P28-5-2- AF | Jan-88          | Final Well History Report Forecast Verification Report- <b>Como P-21</b> , Scotian Shelf  |
| 8641-11-P28-5-2- AM | Jul-87          | Final Well History Report, Meteorological Data Analysis Report- <b>Como P-21</b> , Scotian Shelf  |
| 8641-11-P28-5-2- AW | Jan-88          | Final Well History Report, Wave Data Report- <b>Como P-21</b> , Scotian Shelf   |
| 8641-11-P28-5-3- AC | 1987            | Physical Oceanographic Data Report, Current Meter Data- <b>Panuke F-99</b> , Scotian Shelf  |
| 8641-11-P28-5-3- AF | Jan-87          | Final Well History Report, Forecast Verification Report- <b>Panuke F-99</b> , Scotian Shelf   |
| 8641-11-P28-5-3- AM | 25-Aug-87       | Meteorological Data Analysis Report, Final Well History Report- <b>Panuke F-99</b> , Scotian Shelf  |
| 8641-11-P28-5-3- AW | 7-Jan-88        | Final Well History Report, Wave Data Report- <b>Panuke F-99</b> , Scotian Shelf   |
| NS41-P092-001DA     | 18-Jun-01       | Benthic Habitat Characterization ini the Exploration Licenses of <b>Highland (EL 2395), Barrington (EL 2397), Torbrook (EL 2384) Caledonia (EL2390), Weymouth (EL 2380) &amp; Plymton (EL 2394)</b> |

| <b>Program No.</b>         | <b>Completion Date</b> | <b>Report Description</b>   |
|----------------------------|------------------------|---|
| 8641-S006-011E             | 14-Aug-84              | Current Meter Data Analysis, Final Report #1- <b>South Desbarres O-76</b> , Scotian Shelf           |
| 8641-S006-011E             | 2-Oct-84               | Current Meter Data Analysis, Final Report #2- <b>South Desbarres O-76</b> , Scotian Shelf           |
| 8641-S006-012E             | 23-Oct-84              | Current Meter Data Analysis, Final Report #1- <b>Glenelg E-58</b> , Scotian Shelf                   |
| 8641-S006-013E             | 4-Apr-85               | Current Meter Data Analysis- <b>Alma K-85</b> , Scotian Shelf                                       |
| 8641-S006-013E             | 10-Apr-85              | Meteorological Data Analysis- <b>Alma K-85</b> , Scotian Shelf                                      |
| 8641-S006-014E             | 26-Jan-85              | Meteorological Data Analysis- <b>Glenelg H-38</b> , Scotian Shelf                                   |
| 8641-S006-017E             | 21-Oct-84              | Forecast Verification Statistics- <b>Glenelg E-58</b> , Scotian Shelf                               |
| 8641-S006-018E             | 13-Oct-84              | Forecast Verification Statistics- <b>South DesBares O-76</b> , Scotian Shelf                        |
| 8641-S006-019E             | 31-Dec-85              | Final Well History Report, Current Meter Data Report- <b>North Triumph G-43</b> , Scotian Shelf     |
| 8641-S006-020E             | 8-Jun-85               | Current Meter Data Analysis- <b>Peskowesk A-99</b> , Scotian Shelf                                  |
| 8641-S006-021E             | 13-Jun-85              | Physical Environmental Data Analysis, Final Report- <b>Peskowesk A-99</b> , Scotian Shelf           |
| 8641-S006-026E             | Jun-86                 | Final Well History Report, Wave Data Report- <b>North Triumph B-52</b> , Scotian Shelf              |
| 8641-S006-027E             | Jun-86                 | Final Well History Report, Wave Data Report- <b>Tantallon M-41</b> , Scotian Shelf                  |
| 8641-S006-028E             | 24-Jan-85              | Current Meter Data Analysis, Final Report- <b>Glenelg H-38</b> , Scotian Shelf                      |
| 8641-S006-029E             | Sep-86                 | Final Well History Report, Current Meter Data Report- <b>Tantallon M-41</b> , Scotian Shelf         |
| 8641-S006-030E             | 17-Apr-86              | Final Well History Report, Meteorological Summary Report- <b>Tantallon M-41</b> , Scotian Shelf     |
| 8641-S006-031E             | 17-Apr-86              | Final Well History Report, Forecast Verification Report- <b>Tantallon M-41</b> , Scotian Shelf      |
| 8641-S006-032E             | 26-Mar-86              | Final Well History Report, Current Meter Data Report- <b>North Triumph B-52</b> , Scotian Shelf     |
| 8641-S006-033E             | 29-Mar-86              | Final Well History Report, Meteorological Summary Report- <b>North Triumph B-52</b> , Scotian Shelf |
| 8641-S006-034E             | 29-Mar-86              | Final Well History Report, Forecast Verification Report - <b>North Triumph B-52</b> , Scotian Shelf |
| 8641-S006-035E             | 1-Feb-86               | Final Well History Report, Forecast Verification Report - <b>North Triumph G-43</b> , Scotian Shelf |
| 8641-11-S6-4-1- AC1 to AC4 | 24-Aug-83              | Current Meter Data Analysis- <b>Uniacke G-72</b> , Scotian Shelf                                    |

| <b>Program No.</b>    | <b>Completion Date</b> | <b>Report Description</b>   |
|-----------------------|------------------------|---|
| 8641-11-S6-4-3- AC    | 30-Jul-86              | Final Well History Report, Current Meter Data Report- <b>Glenelg N-49</b> , Scotian Shelf       |
| 8641-11-S6-4-3- AF    | 4-Aug-86               | Final Well History Report, Forecast Verification Report- <b>Glenelg N-49</b> , Scotian Shelf    |
| 8641-11-S6-4-3- AM    | 4-Aug-86               | Final Well History Report, Meteorological Summary Report - <b>Glenelg N-49</b> , Scotian Shelf  |
| 8641-11-S6-4-3- AW    | Nov-86                 | Final Well History Report, Wave Data Report- <b>Glenelg N-49</b> , Scotian Shelf                |
| 8641-11-S6-4-4- AC    | 21-Sep-86              | Final Well History Report, Current Meter Data Report- <b>Panuke B-90</b> , Scotian Shelf        |
| 8641-11-S6-4-4- AF    | 24-Sep-86              | Final Well History Report, Forecast Verification Report- <b>Panuke B-90</b> , Scotian Shelf     |
| 8641-11-S6-4-4- AM    | 24-Sep-86              | Final Well History Report, Meteorological Summary Report- <b>Panuke B-90</b> , Scotian Shelf    |
| 8641-11-S6-4-4- AW    | Nov-86                 | Final Well History Report, Wave Data Report- <b>Panuke B-90</b> , Scotian Shelf                 |
| 8641-11-S6-5-1- AFM   | 13-Jun-85              | Physical Environmental Data Analysis, Final Report- <b>Peskowesk A-99</b> , Scotian Shelf       |
| 8641-11-S6-5-2- AC    | 9-Aug-85               | Current Meter Data Analysis, Final Report- <b>Merigomish C-52</b> , Scotian Shelf               |
| 8641-11-S6-5-2- AFM   | 12-Aug-85              | Physical Environmental Data Analysis, Final Report- <b>Merigomish C-52</b> , Scotian Shelf      |
| 8641-11-S6-6-1- AFM   | 31-Jul-85              | Physical Environmental Data Analysis, Final Report- <b>Kegeshook G-67</b> , Scotian Shelf       |
| NS41-S051-001DA       | 21-Sep-02              | Characterization of Benthic Habitat in the <b>Mahone Block</b> Exploration Licences 2381 & 2382 |
| 8642-M003-008E        | 1982                   | Chemistry and Toxicity of the <b>Venture Field</b> condensates                                  |
| 8642-11-C4-1F- NXX-AS | 1978                   | An Oil Spill Scenario for the Chevron Acadia Prospect- <b>Acadia Prospect</b> , Scotian Shelf   |
| 8643-M003-02E         | 1982                   | <b>Venture</b> E.I.S. Aesthetic Environment   |

## 4 Released Sample Reports

| Program # | Completion Date | Report Description  |
|-----------|-----------------|---|
| SR1979-1  | 1979            | Palynological Zonation and Correlation of Sixty-seven Wells, Eastern Canada   |
| SR1983-1  | Feb-83          | Geotechnical Analyses of Core Samples From Davis Strait   |
| SR1985-1  | Apr-85          | Potassium-Argon Age Determination, <b>Ojibwa E-07</b>   |
| SR1985-2  | Aug-85          | Palynological Analysis of Conventional Core from <b>Venture B-52</b> Well   |
| SR1986-1  | May-86          | Matrix Density Study, <b>South Venture O-59</b>   |
| SR1986-2  | Dec-86          | Vitrinite Reflectance of Coal Samples from <b>Tyrone No. 1</b>  |
| SR1986-3  | Dec-86          | Vitrinite Reflectance of Coal Samples from <b>Naufrage No. 1</b>  |
| SR1987-1  | 1987            | Venture Field Porosity and Permeability Measurements  |
| SR1988-1  | Jan-88          | Vitrinite Reflectance of Dispersed Organics from <b>Venture B-13</b>  |
| SR1988-2  | Jul-88          | Biostratigraphic (Palynological) Studies of the <b>West Chebucto K-20</b> Well  |
| SR1988-3  | Aug-88          | Vitrinite Reflectance Data on Boreholes <b>Cape Spencer #1</b> and <b>Chinampas N-37</b>  |
| SR1988-4  | May-88          | Mesozoic-Cenozoic Foraminiferal, Ostracod and Calpionellid Zonation of the North Atlantic Margin of North America: Georges Bank-Scotian Basins and Northeastern Grand Banks Biostratigraphic Correlation of 51 Wells Open File # 1791 |
| SR1989-1  | Sep-89          | Cretaceous Organic Facies and Oil Occurrence Scotian Shelf  |
| SR1989-2  | Nov-89          | Biostratigraphy (Foraminifera and Ostracoda) and Depositional Environments of the <b>Shelburne G-29</b> Well  |
| SR1989-3  | Jan.-00         | Report on the Mesozoic Foraminiferal and Ostracode Biostratigraphy and Depositional Environments of Mobil et al. <b>Arcadia J-16</b> Scotian Shelf), from 1,305 – 6,005 m (TD). Report No. M. RES. G-PAL. 1-200PA                     |
| SR1990-1  | Jan-90          | Vitrinite Reflectance of Dispersed Organics from <b>Glenelg J-48</b> Open File #2293  |
| SR1990-2  | Dec-90          | Organic Facies and Maturation of Sediments from <b>S. Venture O-59</b> , <b>Venture B-43</b> and <b>Louisbourg J-47</b>   |
| SR1990-3  | Dec-90          | Characterization and Maturation of Selected Oil and Condensate Samples and Correlation with Source Beds, Scotian Shelf  |
| SR1990-4  | Jul-90          | Vitrinite Reflectance of Dispersed Organics from <b>Alma F-67</b> Open File #2289   |
| SR1990-5  | Mar-90          | Evaluation of Organic Facies of Verrill Canyon Formation Sable Subbasin, Scotian Shelf  |

| Program # | Completion Date | Report Description  |
|-----------|-----------------|---|
| SR1991-1  | Mar-91          | Vitrinite Reflectance of Dispersed Organics from Conventional Cores from Seven Scotian Shelf Wells Open File #2455 ( <b>Arcadia J-16, Louisbourg J-47, South Desbarres O-79, Venture B-52, West Chebucto K-20, West Venture C-62, West Venture N-91</b> )   |
| SR1991-2  | Dec-91          | Characterization and Maturation of Selected Cretaceous and Jurassic Source Rocks and Crude Oil, Scotian Shelf   |
| SR1991-3  | Jan-91          | Vitrinite Reflectance of Dispersed Organics from <b>Tantallon M-41</b> Open File #2381  |
| SR1991-5  | 1991            | Implications of apatite fission track analysis for the thermal history of the Scotian Basin offshore Nova Scotia, Canada ( <b>Thebaud I-94, West Olympia O-51, Cohasset A-52, Merigomish C-52, Kegeshook G-67, Eagle D-21</b> )   |
| SR1992-1  | Mar-92          | Vitrinite Reflectance of Dispersed Organics from <b>Demascota G-32</b> Open File #2623  |
| SR1992-2  | Mar-92          | Vitrinite Reflectance of Dispersed Organics from <b>Panuke B-90</b> Open File #2622   |
| SR1993-1  | Feb-93          | Vitrinite Reflectance of Dispersed Organics from <b>Hebron I-13</b> Open File #2671   |
| SR1993-2  | Mar-93          | Vitrinite Reflectance of Dispersed Organics from <b>Bluenose 2G-47</b> Open File #2707  |
| SR1993-3  | Jun-93          | A Maturation Framework for Jurassic Sediments in the Sable Subbasin, Offshore Nova Scotia. ( <b>Eagle C-21, Glenelg J-48, Venture D-23</b> )  |
| SR1993-4  | Sep-93          | Oil Correlation Summary with Appendix B-Ion Chromatograms for Representative Oils from the NS Basin. ( <b>Cohasset D-42, Penobscot L-30, Venture B-52, Alma F-67, Alma K-85</b> )   |
| SR1993-5  | Feb-93          | Analyses and Interpretation of Geochemical and Source Rock Data from Scotian Shelf Wells. ( <b>Cohasset A-52, Sable Island 3H-58, Venture B-52, South Desbarres O-76, North Triumph G-43, S.W. Banquereau F-34, Thebaud C-74</b> )  |
| SR1993-6  | Mar-93          | Vitrinite Reflectance of Dispersed Organics from <b>South Desbarres O-76</b> Open File #2706  |
| SR1994-1  | Mar-94          | Vitrinite Reflectance of Dispersed Organics from Eleven Scotian Shelf Wells Open File #2902. ( <b>Abenaki J-56, Alma F-67, Cohasset D-42, Cohasset L-97, Demascota G-32, N. Triumph B-52, N. Triumph G-43, Penobscot L-30, Uniacke G-72, Venture B-52, Venture H-22</b> )   |
| SR1994-2  | Dec-94          | Vitrinite Reflectance of Dispersed Organics from Thirteen Scotian Shelf Wells Open File #3115. ( <b>Bluenose 2G-47, Citadel H-52, Eagle D-21, Intrepid L-80, Merigomish C-52, N. Triumph B-52, Onondaga B-96, Sable Island C-67, South Desbarres O-76, South Venture O-59, Thebaud I-93, Venture D-23, Wenonah J-75</b> ) |
| SR1994-3  | Oct-94          | Preliminary Cenozoic Foraminiferal Biostratigraphy and Depositional Environments of <b>Venture B-52</b>   |

| Program #             | Completion Date  | Report Description   |
|-----------------------|------------------|--|
| SR1994-4              | Jan-94           | Organic Petrography and Kinetics of Limestone and Shale Source Rocks in Wells Adjacent to Sable Island, Nova Scotia and the Interpretation on Oil-Oil or Oil-Source Rock Correlation and Basin Modeling ( <b>50 wells</b> )  |
| SR1994-5              | Jan-94           | Cenozoic Micropaleontological Biostratigraphy of the LASMO/NSR(V)L <b>Cohasset Producer CP1 P-51</b> Well, Scotian Shelf   |
| SR1995-1              | Sep-95           | West Sable Exploration License Reservoir Quality Study Offshore Nova Scotia. ( <b>Thebaud C-74, Thebaud I-93, Migrant N-20, Alma F-67</b> )  |
| SR1995-2              | Jul-95           | Tertiary Molluscs of the Scotian Shelf, Atlantic Canada. ( <b>Cohasset CP1 P-51</b> )  |
| SR1996-2              | Jun-97           | Palynological Correlation of <b>South Venture O-59</b> and <b>Venture B-52</b> Wells   |
| SR1997-3              | Jun-97           | Palynological Study of Selected Samples from 6 Wells in the Scotian Shelf Area ( <b>Evangeline H-98, Glenelg E-58, Tantallon M-41, Alma F-67, Chebucto K-90, and West Chebucto K-20</b> )  |
| SR1997-6              | Dec-97           | Assessment of Iroquois Oil Stains, <b>Mohican I-100</b> and <b>Moheida P-15</b> , Scotian Shelf  |
| SR1998-5              | Dec-99           | Vitrinite Reflectance (Ro) of Dispersed Organics from Petro-Canada et al <b>Shelburne G-29</b> Open File #3854   |
| SR1998-5              | Dec-99           | Vitrinite Reflectance (Ro) of Dispersed Organics from Shell et al <b>Shubenacadie H-100</b> Open File #3855  |
| SR(P)1999-2           | Dec-99           | Eastern Canada Margin Oil Study ( <b>Alma K-85, Alma F-67, Glenelg E-58, Glenelg J-48, Glenelg J-49, Chebucto K-90, N. Triumph G-43, Panuke PP1, Panuke B-90, Intrepid L-80, Cohasset CP6B, Cohasset CP3A, Cohasset CP9, Cohasset CP4, Cohasset CP6, Cohasset D-42, Cohasset A-52, Balmoral M-32, Thebaud I-93 Thebaud C-74, South Sable B-44, Thebaud I-94, Thebaud P-84, Cohasset L-97, Sable Island O-47, Sable Island E-48, Sable Island H-58, Sable Island 2h-58, Sable Island 3H-58, S. Venture O-59, Primrose N-50, Primrose A-41, Olympia O-51, W. Venture C-62, Olympia A-12, Venture B-52, Venture H-22, Venture B-43, Arcadia J-16, Bluenose 2G-47, Citnalta I-59, Penobscot L-30, Banquereau C-21, Uniake G-72</b> ) |
| SR1999-3              | May-99           | Petrographic Study Scotian Shelf Logan Canyon Formation and Missisauga Formation ( <b>Alma K-85, Glenelg E-58, Glenelg J-48, Kegeshook G-67, Marmora P-35, Merigomish C-52, Panuke B-90, Thebaud I-93, W. Chebucto K-20</b> )  |
| SR1999-4 and SR1995-5 | Mar-99<br>Apr-99 | Geochemical Analysis of Well Cuttings from the <b>Albatross B-13, Abenaki J-56 and Evangeline H-98</b> wells, Scotian Basin  |
| SR1999-5              | Apr-99           | Geochemical Analysis of Well Cuttings from the <b>Albatross B-13, Abenaki J-56, Evangeline H-98 wells</b> , Scotian Basin  |
| SR1999-13             | Dec-02           | Age of Basaltic Rocks Recovered from Drilling in the Davis Strait, Eastern Canada ( <b>Hekja O-71, Gjoa G-37</b> )   |

| <b>Program #</b> | <b>Completion Date</b> | <b>Report Description</b>  |
|------------------|------------------------|--|
| SR2000-A         | Jun-00                 | Vitrinite Reflectance (Ro) of Dispersed Organics from Petro-Canada et al North <b>Banquereau I-13</b> Open File #3897  |
| SR2000-2         | Jul-01                 | Biostratigraphic Correlation of Paleocene – TD Sections <b>Alma F-67, Glenelg J-48, and N. Triumph G-43</b> Scotian Shelf Wells Offshore Eastern Canada  |
| SR2000-3/3a      | Aug-02                 | Dalhousie University fission Track Research Laboratory Report 2001-1: Apatite Fission Track Dating and Thermal Modeling of Reservoir Sands #1, #2, and #3 from the <b>Venture -1, V-4, D-23, B-13, B-43, and H-22 wells, Venture Gas Field</b> , Offshore Nova Scotia  |
| SR2000-6         | Aug-01                 | Geochemical Results of core samples from Various Scotian Shelf Wells. ( <b>Peskowesk A-99, Tantallon M-41, Louisbourg J-47, Citadel H-52, N. Banquereau C-21, Esperanto K-78, south Griffin J-13, Dauntless D-35</b> )   |
| SR2000-7         | Dec-04                 | Sedimentology and Stratigraphy of an Ancient Progradational Terrigenous Clastic Shelf Margin, Missisauga Formation (Upper Jurassic-Lower Cretaceous), Offshore Nova Scotia, Canada PhD. Thesis, Author - Donald I. Cummings ( <b>Alma K-85, Alma F-67, W. Venture C-62, W. Venture N-91, Thebaud C-74, W. Olympia O-51, N. Triumph G-43, W. Chebucto F-20, Venture B-13, Venture B-52, Venture H-22, Kegeshook G-67, Panuke B-90, Glenelg E-58A, Thebaud I-93, Venture B-43, Glenelg N-49, Panuke F-99, Lawrence D-14, Sable Island C-67</b> ) |
| SR2000-10        | Sep-01                 | Chemostratigraphy of selected intervals: Sable Island. ( <b>Thebaud I-93, Thebaud C-74, Thebaud 1, Thebaud 3, Thebaud 5</b> )  |
| SR2000-12        | Sep-01                 | Biostratigraphy of the Interval 2150 – 4200m TD Shell <b>Shubenacadie H-100</b>  |
| SR2000-13        | Jan-01                 | Dielectric Constant Measurements of wells <b>Thebaud I-93, Thebaud I-94, Shubenacadie H-100, Evangeline H-98, Shelburne G-29, and Tantallon M-41</b>   |
| SR2000-14        | Aug-01                 | Geochemical analyses of selected samples for 11 wells, Fluid Inclusion Data, Geochem-TOC & Tock Eval ( <b>Glooscap C-63, Glenelg J-48, W. Chebucto K-20, Tantallon M-41, s. Griffin J-13, Dauntless D-35, Mohican I-100, Glooscap C-63, Iroquois J-17, Argo F-38, Adventure F-80</b> ).  |
| SR2001-7         | Oct-01                 | Rock Eval. Data ( <b>Acadia K-62, Adventure F-80, Erie D-26, Como P-21, Dover A-43, Demascota G-32, Eagle D-21, Primrose A-41</b> )  |
| SR2001-8         | Oct-03                 | Report on an Examination of Volcanic and associated clasts in cuttings and drill core, wells ( <b>North Sydney</b> ) <b>F-24</b> and ( <b>North Sydney</b> ) <b>P-05</b>   |
| SR2001-9         | Apr-02                 | West Sable SCAL Data – <b>Sable Island 3H-58</b> and <b>Sable Island 5H-58</b>   |
| SR2001-11        | 2004                   | Regional correlation of Mesozoic Palaeogene sequences across the Greenland-Canada boundary ( <b>Hekja O-71, Gjoa G-37, Raleigh N-18</b> )<br>Dinoflagellate cyst stratigraphy of the <b>Raleigh N-18</b> well, Saglek Basin, Davis Strait, offshore eastern Canada   |

| Program #               | Completion Date | Report Description   |
|-------------------------|-----------------|--|
| SR2002-10               | Feb-03          | Lower Cretaceous Lithofacies and Petrology of <b>Peskowesk A-99, and Dauntless D-35 Wells, Scotian Basin. (Honors thesis – Author: Janet Shannon)</b>  |
| SR2002-10A / SR2001-15A | 2005            | Electron microbe geochronology and chemical variation of detrital monazite from the Lower Cretaceous sandstones of the Scotian Basin and the Chaswood Formation, Eastern Canada. GSC open file 5023 ( <b>Alma K-85, Naskapi N-30, Peskowesk A-99</b> ) |
| SR2002-10B              | 2006            | Depositional environment and provenance analysis of the Lower Cretaceous sedimentary rocks of the <b>Peskowesk A-99</b> well. GSC Open File Report 5383  |
| SR2002-10C              | 2009            | Petrology and Mineralogy of Lower Cretaceous sedimentary rocks, Dauntless D-35 well, Scotian Shelf (GSC open file 6280) G.Pe-Piper and D.J.W. Piper  |
| SR2003-3                | Aug-03          | Biostratigraphy of the Lower Cretaceous P Jurassic Strata in Five Wells Offshore Nova Scotia Nannofossil Slides (Received). ( <b>Demascota G-32, Glenelg J-48, Thebaud C-74, Cree E-36</b> )   |
| SR2003-5                | Jun-03          | Core laboratories Reservoir Fluids Report – Calgary TEC Analysis <b>Panuke PI-1A, Panuke PI-1B</b>   |
| SR2003-7                | Jan-03          | Moblil et al. <b>Arcadia J-16</b> Palynological analysis of the section between 3,905 m and 6,000 m  |
| SR2004-1                | Jul-04          | Nova Scotian Shelf: Biostratigraphic and Sequence Stratigraphic Correlation of the Early Cretaceous Strata in Seven Wells ( <b>Annapolis G-24, Balvenie B-79, Louisbourg J-47, Southampton A-25, Tantallon M-41, West Chebucto K-20</b> )              |
| SR2005-7                | Nov-07          | Chlorite Diagenesis in Reservoir Sandstones of the Lower Missisauga Formation, Offshore Nova Scotia. Masters Thesis, Kathleen Gould. ( <b>Thebaud C-74, Venture 1, Venture 3, Venture 4</b> )  |
| SR2006-2                | Jul-12          | A Stratigraphic Reconstruction of Bulk Volatile Chemistry from Fluid Inclusions in <b>Mohawk B-93</b> and <b>Bonnet P-23</b>   |
| SR2006-7                | Nov-06          | Study of fluid inclusions in salt from Atlantic Canada (Summer Research Project – Evan T. Brown) <b>Argo F-38, Adventure F-80</b>  |
| SR2006-13               | Mar-08          | Lower Cretaceous Lithofacies, Petrology, and Geochemistry of the <b>North Triumph G-43</b> well, Scotian Basin (Honours Thesis, Heidi McKee, St. Mary's University)  |
| SR(E)2007-7A            | 2008            | Detrital zircons as provenance indicators in the Lower Cretaceous sedimentary rocks of the Scotian Basin, Eastern Canada: A SEM_CL study of textures. GSC Open file 5746   |
| SR(E)2007-11            | Apr-08          | Lower Cretaceous Lithostratigraphy, Sedimentology, and Petrology of the <b>Kegeshook G-67</b> well, Scotian Basin (Honours Thesis, James Foley, St. Mary's University)   |

## 5. RELEASED WELLSITE SURVEY REPORTS

| Program No.  | Completion Date | Report Description  | Mylar (Y / N) |
|--|-----------------|---|---------------|
| 8626-B011-001E   | 16-Oct-83       | Wellsite Survey Report for <b>South Griffin J-13</b> , Banquereau Bank  | Y             |
| 8626-B011-002E   | 18-Apr-84       | Wellsite Survey Report for <b>Hesper P-52</b> , Banquereau Bank   | N             |
| 8626-B011-003E   | 3-May-84        | Wellsite Survey Report for <b>Griffin J-13</b> , Banquereau Bank  | N             |
| 8626-C004-001E   | 8-Feb-78        | Wellsite Survey Report for <b>Acadia K-62</b> , Nova Scotia Continental Slope   | N             |
| NS26 (NF)-C004-01E<br>x-ref NS24-S006-001E,<br>002E            | 15-Jun-01       | Seabed Survey Reports for <b>Newburn /Mahone</b> Prospects  | N             |
| 8626-C055-006E   | 22-Jul-86       | Wellsite Survey Report for <b>Whycocomagh N-90</b> Area   | N             |
| NS26-C146-001E   | 19-Dec-01       | Wellsite Survey Report 2001 <b>Marquis L-35</b> Drill Location  | N             |
| NS26-C146-003E   | 5-Aug-03        | Wellsite Survey Report for <b>Mariner I-85</b>  | N             |
| NS26-C146-004E   | 19-Aug-04       | Wellsite Survey Report for <b>Mariner-2 L-54</b>  | N             |
| NS26-E040-001E   | 3-Nov-02        | Wellsite Survey Report for <b>Cree I-34</b>   | N             |
| NS26-E040-002E   | 19-May-02       | Geotechnical data from the proposed location for the <b>South Venture, Glenelg, Thebaud</b> compression platforms and associated inter-field pipeline routes. | N             |
| NS26-E043-001E<br>x-ref NS26-P003-005E<br>x-ref NS26-P092-001E | 18-May-02       | <b>Deep Panuke</b> Pipeline Route Survey, Deep Panuke Development Final Report, Geophysical Program.  | N             |
| NS26-E043-002E   | 12-Oct-02       | Wellsite Survey Report for <b>MarCoh D-41</b> (Cohasset Site Survey)  | N             |
| NS26-E043-002E   | 12-Oct-02       | Wellsite Survey Report for <b>Margaree F-70</b>   | N             |
| NS26-E043-002E   | 12-Oct-02       | Wellsite Survey for <b>Dominion F-14</b>  | N             |
| NS26-E043-002E   | 12-Oct-02       | Wellsite Survey for <b>Baddeck I-07</b> (Lower Musquodoboit Site)   | N             |
| NS26 (NF)-E043-001E<br>x-ref NS24-P003-04E                     | 15-Jun-01       | Wellsite Geophysical Study for <b>Weymouth O-44</b> and <b>P-44</b> (Relief), Weymouth Block, Scotian Slope   | N             |
| NS26 (NF)-E043-002E<br>x-ref NS24-P003-02E                     | 30-May-00       | Wellsite Geophysical Study <b>Torbrook C-15 – Scotian Slope</b>   | N             |
| NS26 (NF)-E043-003E<br>x-ref NS24-P003-04E                     | 15-Jun-01       | Wellsite Geophysical Study <b>Weymouth A-45</b> Location (and <b>O-44/P-44</b> Relief Locations)  | N             |
| NS26-E044-001E   | 27-Oct-02       | Pipeline Route Survey for Blue Atlantic Transmission System – Environmental Program   | N             |

| <b>Program No.</b>   | <b>Completion Date</b> | <b>Report Description</b>  | <b>Mylar (Y / N)</b> |
|--|------------------------|--|----------------------|
| 8626-H005-001E   | 6-Apr-84               | Wellsite Survey Report for <b>Citadel H-52</b> , Banquereau Bank                               | N                    |
| 8626-H006-001E   | 8-Apr-83               | Wellsite Survey Report for <b>Glooscap C-63</b> , Western Bank                                 | Y                    |
| 8626-H006-002E   | 12-Oct-82              | Wellsite Survey Report for <b>South Sable / Evangeline</b> areas                               | Y                    |
| 8626-H006-003E<br>x-ref 8626-S6-4E                               | 23-Nov-83              | Bathymetry Survey Report for <b>Chebucto K-90</b> , Sable Island Bank, Scotian Shelf           | N                    |
| 8626-H006-009E   | 18-Jan-85              | Seabed Investigation Survey for <b>Beausejour Site</b> , Sable Island Bank                     | N                    |
| 8626-H006-010E   | 11-Oct-85              | Seabed Investigation Survey for <b>Chebucto Site</b> , Sable Island Bank                       | N                    |
| 8626-H007-001E   | 27-Aug-80              | Wellsite Survey Report for East Point E-47 and Beaton Point F-70                               | N                    |
| 8626-H007-003E   | 19-Feb-83              | Wellsite Survey Report for <b>East Sable O-47</b> , Banquereau Bank                            | N                    |
| NS26 (NF)-I003-01E<br>x-ref NS24-V003-03P,<br>x-ref S24-P003-04E | 30-Jul-01              | 3D Geohazard Evaluation for <b>Balvenie B-79</b>   | N                    |
| NS26-L023-001E   | 19-Mar-90              | Wellsite Survey Report for <b>Balmoral Site</b> , Sable Island Bank                            | N                    |
| NS26-L023-001E   | 20-Mar-90              | Wellsite Survey Report for <b>Lawrence Site</b> , Sable Island Bank                            | N                    |
| 8626-M003-003E   | 22-Jan-80              | Wellsite Survey Report for <b>Venture D-42</b> and <b>Venture G-12, East Bar, Sable Island</b> | N                    |
| 8626-M003-006E   | 24-Aug-80              | Wellsite Survey Report for <b>Thebaud K-93</b> , Sable Island Bank                             | N                    |
| 8626-M003-006E   | 26-Aug-80              | Wellsite Survey Report for <b>Migrant J-2</b> , Sable Island Bank                              | N                    |
| 8626-M003-006E   | 5-Aug-80               | Wellsite Survey Report for <b>Bluenose G-47A</b> , Sable Island Bank                           | N                    |
| 8626-M003-006E   | 22-Aug-80              | Wellsite Survey Report for <b>Venture NW</b> , Sable Island Bank                               | N                    |
| 8626-M003-012E   | 2-May-82               | Wellsite Survey Report for <b>Mariner D-25</b> , Sable Island Bank                             | N                    |
| 8626-M003-013E   | 2-May-82               | Wellsite Survey Report for <b>Arcadia J-16</b> , Sable Island Bank                             | N                    |
| 8626-M003-016E   | 3-Nov-82               | Final Drilling Survey, <b>West Olympia Prospect</b> , Sable Island Bank                        | Y                    |
| 8626-M003-023E   | 9-May-85               | Shallow Seismic Surveys for <b>NW Venture N-91</b> and <b>Venture B-92</b>                     | N                    |
| 8626-M003-024E   | 26-Aug-87              | Wellsite Survey Report for <b>South Sable B-44</b> , Sable Island Bank                         | N                    |
| 8626-M003-024E   | 26-Aug-87              | Wellsite Survey Report for <b>Adamant P-96</b> , Sable Island Bank                             |                      |

| Program No.                                 | Completion Date | Report Description   | Mylar (Y / N) |
|---|-----------------|--|---------------|
| 8626-M003-025E                              | 26-Aug-87       | Wellsite Survey Report for <b>North Eagle B-54</b> , Sable Island Bank   | N             |
| NS26-M003-004E                              | 30-Jan-96       | Pipeline Survey – Sable Offshore Energy Project Pipeline Route <b>Country Harbour to Thebaud and Venture</b>   | N             |
| NS26-M003-006E                              | 29-Oct-96       | Final report Sable Offshore Energy Project 1996 Geophysical / Geotechnical Pipeline Route Survey <b>Country Harbour to Thebaud and Venture</b>                                       | N             |
| NS26-M003-007E                              | Jan-95          | Wellsite Survey Report - <b>North Triumph, Thebaud, Venture</b> Geotechnical Investigation - Thebaud, Venture Site A-97-09, Sand Ridge Site A-97-09. West Venture Shallow Gas Survey | N             |
| NS26-M003-009E                              | 26-Nov-99       | Wellsite Survey Report for <b>Emma N-03</b> (Site "A")   | N             |
| NS26-M003-010E                              | 22-Jul-00       | Wellsite Survey Report for <b>South Venture P-60</b>   | N             |
| NS26-M003-010E                              | 28-Jun-00       | Wellsite Survey Report for <b>Glenelg H-59</b>   | N             |
| NS26-M003-010E                              | 23-Jul-00       | Wellsite Survey Report for <b>Adamant N-97</b> and Pipeline Route Survey Report <b>Alma to Thebaud</b>   | N             |
| NS26 (NF) M055-001E<br>x-ref NS24-V003-002P | 18-Oct-00       | Wellsite Survey Report for <b>Crimson F-81</b>   | N             |
| NS26-M055-001DA<br>x-ref NS26-C142-001P     | 25-Sep-02       | Characterization of Benthic Habitat in the <b>Annapolis Block</b>  | N             |
| NS26-P003-001E                              | 12-Feb-98       | Wellsite Survey Final Report <b>Grand Pre-G-08</b>   | N             |
| NS26-P003-02E                               | 26-Jul-00       | Wellsite Survey Report for <b>Panuke H-08</b>  | N             |
| NS26-P003-02E                               | 26-Jul-00       | Wellsite Survey Report for <b>Panuke M-79</b>  | N             |
| NS26-P003-002E                              | 5-May-00        | Wellsite Survey Report for <b>Panuke F-09</b>  | N             |
| NS26-P003-002E                              | May-00          | Wellsite Survey Report for <b>Queensland M-88</b>  | N             |
| NS26-P003-003E                              | 22-May-01       | Wellsite Survey Report for <b>Southampton West A-25</b>  | N             |
| NS26-P003-003E                              | 22-May-01       | Wellsite Survey Report for <b>Musquodoboit F-23</b>  | N             |
| NS26-P003-004E                              | 15-Jun-01       | Wellsite Survey Geotechnical Report: <b>Southampton A-25</b> Site E Jack Up Rig Foundation Analysis  | N             |
| NS26-P003-005E<br>x-ref NS26-E043-001E      | 21-Oct-01       | <b>Deep Panuke</b> Pipeline Route Survey<br><b>Deep Panuke</b> Development Final Report Geophysical Program  | N             |
| 8626-P028-006E                              | 2-Nov-81        | Wellsite Survey for <b>Banquereau Area, Site A</b> , Scotian Shelf   | Y             |
| 8626-P028-006E                              | 15-Oct-81       | Wellsite Survey for <b>Banquereau Area, Site B</b> , Scotian Shelf   | Y             |
| 8626-P028-006E                              | 15-Oct-81       | Wellsite Survey for <b>Banquereau Area, Site C</b> , Scotian Shelf   | Y             |

| Program No.                            | Completion Date | Report Description  | Mylar (Y / N) |
|--|-----------------|---|---------------|
| 8626-P028-006E                         | 15-Oct-81       | Wellsite Survey for <b>Banquereau Area, Site D</b> , Scotian Shelf  | Y             |
| 8626-P028-007E                         | 17-Jul-82       | Wellsite Survey Report for <b>West Esperanto</b> , Banquereau Bank  | Y             |
| 8626-P028-008E                         | 2-Aug-82        | Wellsite Survey for <b>Banquereau Area, Site E</b> , Banquereau Bank  | Y             |
| 8626-P028-008E                         | 1-Aug-82        | Wellsite Survey for <b>Banquereau I-13, Site F</b> , Banquereau Bank  | Y             |
| 8626-P028-008E                         | 1-Aug-82        | Wellsite Survey for <b>Banquereau Area, Site G</b> , Banquereau Bank  | Y             |
| 8626-P028-008E                         | 1-Aug-82        | Wellsite Survey for <b>Banquereau Area, Site H</b> , Banquereau Bank  | Y             |
| 8626-P028-009E                         | 5-Aug-82        | Wellsite Survey for Cabot Strait Area   | Y             |
| 8626-P028-010E                         | 20-Feb-83       | Wellsite Survey for <b>St. Paul P-91</b> , Gulf of St. Lawrence   | N             |
| 8626-P028-011E                         | 28-Oct-83       | Wellsite Survey for <b>Albatross G-02 (B-13)</b> , Scotian Shelf  | N             |
| 8626-P028-012E                         | 9-Oct-83        | Wellsite Survey for <b>Bonnet P-23</b> , Scotian Shelf  | N             |
| 8626-P028-013E                         | 21-Oct-83       | Wellsite Survey for <b>Dover A-43</b> , Scotian Shelf   | N             |
| 8626-P028-016E                         | 13-Nov-84       | Wellsite Survey for <b>Shelburne</b> , West Scotian Shelf   | N             |
| 8626-P028-023E                         | 25-Nov-85       | Wellsite Survey for <b>Cohasset A-52</b> , Sable Island Bank  | N             |
| NS26-P092-001E<br>x-ref NS26-E043-001E | 1-May-02        | <b>Deep Panuke</b> Development Final Report Offshore Geotechnical Investigation                               | N             |
| 8626-S006-001E                         | 21-Jul-80       | Wellsite Survey for <b>Aspen Site</b> , South Acadia Block, Nova Scotia Contiental Slope                      | Y             |
| 8626-S006-001E                         | 21-Jul-80       | Wellsite Survey for <b>Alder Site</b> , South Acadia Block, Nova Scotia Contiental Slope                      | Y             |
| 8626-S006-003E                         | 31-Oct-81       | Wellsite Survey for <b>SAOG Site</b> , Nova Scotia Slope  | Y             |
| 8626-S006-004E<br>x-ref 8626-H6-3E     | 28-Oct-81       | Shallow Gas Hazards Survey for Shawnee ( <b>Chebucto K-90</b> ), Nova Scotia                                  |               |
| 8626-S006-004E                         | 28-Oct-81       | Shallow Gas Hazards Survey for <b>N. Cheynne-1</b> and <b>S. Cheynne-2 (Glenelg J-48)</b> , Nova Scotia Shelf | Y             |
| 8626-S006-004E                         | 28-Oct-81       | Shallow Gas Hazards Survey for <b>S. Onondaga</b> , Nova Scotia Shelf   | Y             |
| 8626-S006-005E                         | 22-Jul-82       | Wellsite Survey for <b>Shubenacadie</b> Site, East-South Acadia Block   | N             |
| 8626-S006-006E                         | 28-Jan-83       | Wellsite Survey for <b>Uniacke</b> Site, Sable Island Bank  | N             |
| 8626-S006-006E                         | 29-Jan-83       | Wellsite Survey for <b>South Desbarres</b> Site, Sable Island Bank  | N             |

| <b>Program No.</b>                    | <b>Completion Date</b> | <b>Report Description</b>   | <b>Mylar (Y / N)</b> |
|---------------------------------------|------------------------|---|----------------------|
| 8626-S006-007E                        | 10-Jul-83              | Wellsite Survey for <b>Alma F-67</b> , Sable Island Bank                                    | N                    |
| 8626-S006-007E                        | 10-Jul-83              | Wellsite Survey for <b>Glenelg E-58</b> Area, Sable Island Bank                             | N                    |
| 8626-S006-008E                        | 13-Dec-83              | Wellsite Survey for <b>Kegeshook</b> , Sable Island Bank                                    | N                    |
| 8626-S006-008E                        | 13-Dec-83              | Wellsite Survey for <b>DesBarres</b> , Sable Island Bank                                    | N                    |
| 8626-S006-009E                        | 21-Jan-85              | Wellsite Survey Report for <b>Como</b> Site, Sable Island Bank                              | N                    |
| 8626-S006-010E                        | 21-Jan-85              | Wellsite Survey Report for <b>Tantallon</b> Site, Sable Island Bank                         | N                    |
| 8626-S006-011E                        | 5-Jan-85               | Wellsite Survey Report for <b>Peskowesk A-99, Banquereau</b> , Scotian Shelf                | N                    |
| 8626-S006-011E                        | 21-Jan-85              | Wellsite Survey Report for <b>Wallubeck, Banquereau</b> , Scotian Shelf                     | N                    |
| 8626-S006-012E                        | 27-Nov-84              | Wellsite Survey Report for <b>Merigomish C-52 / Alma K-85</b> , Sable Island Bank           | N                    |
| 8626-S006-013E                        | 15-Jun-85              | Wellsite Survey Report for <b>Panuke</b> Prospect   | N                    |
| 8626-S006-014E                        | 10-Jun-85              | Wellsite Survey Report for <b>Tobeatic, Banquereau Bank</b>                                 | N                    |
| 8626-S006-015E                        | 4-Jun-85               | Wellsite Survey Report for <b>North Triumph</b> Prospect                                    | N                    |
| 8626-S006-016E                        | 27-Sep-85              | Wellsite Survey Report for <b>Glenelg N-49</b> Prospect                                     | N                    |
| 8626-S006-017E                        | 5-Jun-88               | Wellsite Survey Report for <b>Penobscot B-21 and L-21</b> , Scotia Shelf, Sable Island Bank | N                    |
| NS26-S006-01DA<br>x-ref NS26-M003-10E | 12-May-02              | Wellsite Survey Report, <b>Onondaga B-84</b> site   | N                    |
| 8626-T007-001E                        | 23-Nov-82              | Wellsite Survey Report, <b>Alpha Site</b> Gulf of St Lawrence                               | N                    |

## 6. RELEASED GEOPHYSICAL REPORTS

| Program No.                            | Completion Date<br>(dd/mm/yy) | Length<br>(km)   | Report Description   | Mylar<br>(Y/N) |
|--|-------------------------------|------------------|--|----------------|
| 8620-A004-005E                         | 05-Aug-71                     | 1,478.95         | 1971 Geophysical Survey-Gulf of St. Lawrence   | N              |
| 8620-C004-002E                         | 11-Oct-71                     | 934.23           | Summary of Exploration Offshore Misaine and Orpheus Banks Areas                                | N              |
| 8620-C004-005E                         | 03-Aug-72                     | 539.61           | Summary of Exploration, Misaine and Browns Bank areas, East Coast Offshore                     | N              |
| 8620-C015-001P                         | 30-Sep-71                     | 5,231.06         | 1971 East Coast Marine Seismic Participation Survey, Labrador Shelf and Scotian Shelf          | N              |
| 8620-C015-002P                         | 14-Sep-72                     | 717.12           | 1972 East Coast Marine Seismic Participation Survey, Labrador Shelf-Scotian Shelf              | N              |
| 8620-C020-001E/002E                    | 15-Oct-71                     | 6,536.90         | Report on Seismic, Gravity, & Magnetic Survey, Scotian Shelf Area                              | Y              |
| 8620-C039-001E                         | 29-Nov-74                     | 90.69            | Marine Geophysical Survey for Chedabucto Bay Prospect  | N              |
| 8620-G001-001E                         | 23-Nov-73                     | 1,883.52         | Marine Geophysical Survey, West Newfoundland   | N              |
| 8620-G005-001P                         | 05-Nov-71                     | 12,843.82        | Seismic, Gravity & Magnetic Survey Offshore Nfld (Laurentian Channel / Grand Banks)            | Y              |
| 8620-G005-004P                         | 02-Dec-72                     | 10,848.65        | Final Report, East Coast Canada, Offshore Nova Scotia - Offshore Newfoundland Areas            | Y              |
| 8620-H006-001E, 006E                   | 26-Jul-82<br>19-Oct-82        | 735.85<br>669.76 | Mohican Block E.A. 781-005 Scotia Shelf Report on 1982 Seismic Program                         | Y              |
| 8620-H006-002E                         | 02-Jul-82                     | 808.88           | Chebucto E.A. 781-004 Scotia Shelf Report on 1982 Seismic Program                              | Y              |
| 8620-H006-003E                         | 02-Jul-82                     | 634.85           | Geophysical Survey Yarmouth Block, Scotia Shelf  | Y              |
| 8620-H006-007E                         | 13-May-83                     | 2,428.08         | South Sable Island E.A. 146 Scotian Shelf Report on March-May 1983 Seismic Program             | Y              |
| 8620-H006-008E                         | 23-Nov-84                     | 637.00           | 1984 Beasejour & Gully Chebucto Survey Type Reflection Marine Seismograph                      | Y              |
| 8620-H006-009E<br>x-ref 8624-H006-010E | 31-Aug-85                     | 821.65           | Chebucto-Sable Island Survey Type-Reflection Marine Seismograph                                | Y              |
| 8620-H007-001E<br>x-ref 8624-H007-001E | 07-Aug-68                     | 2,280.86         | Report on Magnetometer, Gravity Meter & Seismograph Surveys - Gulf of St. Lawrence 1967 & 1968 | N              |

| <b>Program No.</b>                | <b>Completion Date<br/>(dd/mm/yy)</b> | <b>Length<br/>(km)</b> | <b>Report Description</b>  | <b>Mylar<br/>(Y/N)</b> |
|-----------------------------------|---------------------------------------|------------------------|--|------------------------|
| 8620-H007-002E                    | 01-Dec-70                             | 3,075.59               | Report on Gravity, Magnetometer and Seismograph Surveys, Gulf of St. Lawrence  | N                      |
| 8620-H007-004E                    | 12-Aug-71                             | 588.53                 | Report on Sea Magnetometer and Seismograph Surveys, Gulf of St. Lawrence   | N                      |
| 8620-J001-001E                    | 13-Oct-72                             | 10,491.58              | Report on Geophysical Surveys, Eastern Canada Offshore, Laurentian Cone and Orphan Areas   | N                      |
| 8620-J001-002E                    | 01-Oct-73                             | 4,421.22               | Report on Geophysical Surveys, Orphan Block  | N                      |
| 8620-J001-002E                    | 11-Sep-73                             | 2,705.95               | Report on Geophysical Surveys, North and South Labrador  | N                      |
| 8620-J001-002E                    | 12-Oct-74                             | 2,277.09               | Report on Geophysical Surveys, Laurentian Fan  | N                      |
| 8620-J001-005E                    | 29-Oct-75                             | 903.22                 | 1975 Seismic Program, Scotian Shelf  | N                      |
| 8620-J001-005E                    | 08-Nov-75                             | 1,081.45               | Report of Geophysical Surveys Eastern Canada Offshore, Flemish Pass  | N                      |
| 8620-J001-005E                    | 16-Nov-75                             | 2,228.88               | Report on 1975 Geophysical Surveys Eastern Canada Offshore - South Labrador  | N                      |
| 8620-J001-005E                    | 07-Nov-74                             | 2,285.68               | Report of Geophysical Surveys (1974) Eastern Canada Offshore, Orphan Block North Flemish Cap   | N                      |
| 8620-J008-001E, 002E              | 23-Jul-83                             | 4,693.48               | Report on the Geophysical Survey, ICG Parks Offshore Exploration Partnership 1982-83 East & West Sable Island Areas                    | Y                      |
| 8620-J008-007E                    | 11-Jan-83                             | 2,258.93               | Report on the Geophysical Survey, ICG Parks Offshore Exploration Partnership 1982 Banquereau Area                                      | Y                      |
| 8620-M003-001E                    | 17-Aug-60                             | 1,324.00               | Reflection and Refraction Seismograph Report, Sable Island   | N                      |
| 8620-M003-002E                    | 16-Aug-63                             | 1,651.14               | Reflection and Refraction Seismograph Report, Sable Island   | N                      |
| 8620-M003-003E                    | 25-May-66                             | 334.73                 | Reflection Seismograph and Magnetic Survey   | N                      |
| 8620-M003-005E,<br>8620-M003-006E | 25-Sep-67                             | 4,102.11               | Geophysical Report 1967 Operational Season on Grand Banks, Sable, Banquereau and Truxton Areas   | N                      |
| 8620-M003-007E,<br>8620-M003-008E | 24-Sep-68                             | 7,960.40               | Geophysical Report 1968 Operational Season on Grand Banks, Sable Island, South Sable, Banquereau Bank, Truxton, and Bay of Fundy Areas | N                      |

| Program No.  | Completion Date<br>(dd/mm/yy) | Length<br>(km) | Report Description  | Mylar<br>(Y/N) |
|--|-------------------------------|----------------|---|----------------|
| 8620-M003-009E,<br>8620-M003-010E<br>x-ref 8624-M3-1E  | 25-Sep-69                     | 9,311.40       | Geophysical Report 1969 Operational Season on Sable Island, Banquereau, Truxton and Bay of Fundy Areas                  | Y              |
| 8620-M003-012E, 013E                                   | 17-Aug-72                     | N/A            | Grand Banks & Scotian Shelf High Resolution Geophysical Survey & Sampling Project, Adventure, Bluenose & Hibernia Areas | N              |
| 8620-M003-014E   | 20-Apr-73                     | N/A            | Marine Investigative Survey , Gaultois and Adventure Drilling Locations   | N              |
| 8620-M003-015E   | 26-May-73                     | 80.46          | 1973 Seismic & Gravity Survey, Sable Island Area  | N              |
| 8620-M003-016E   | 22-Jun-73                     | 484.39         | Geophysical Survey, Sable Island Area   | N              |
| 8620-M003-022E   | 12-Sep-74                     | 523.02         | Geophysical Survey on Citnalta, Intrepid and Venture Prospects  | N              |
| 8620-M003-023E   | 28-Aug-74                     | 400.71         | Geophysical Report, South Sable Area  | N              |
| 8620-M003-024E   | 13-Aug-74                     | 719.35         | Geophysical Report, Banquereau Bank Area  | N              |
| 8620-M006-001E   | 10-Oct-70                     | 1,402.60       | Reflection Seismic Survey of a Part of Cabot Strait/Laurentian Channel, Offshore Cape Breton Island, Nova Scotia        | Y              |
| 8620-M006-002E   | 27-Jun-72                     | 806.30         | Reflection Seismic Survey of a Part of Cabot Strait, Offshore Cape Breton Island, Nova Scotia                           | N              |
| 8620-M006-003E   | 01-Dec-74                     | 166.96         | Experimental Reflection Seismic Survey, Offshore Cape Breton Island   | Y              |
| 8620-N011-001E   | 02-Jul-85                     | 2,639.38       | Final Report of Marine Seismic For Nova Scotia Resources on Scotian Shelf, Sable Island                                 | Y              |
| 8620-S006-001E   | 02-Sep-64                     | 2,162.89       | Geophysical Report East Coast Offshore, 1964  | N              |
| 8620-S006-002E<br>x-ref 8620-S6-9E<br>x-ref8624-S6-9E  | 06-Oct-72                     | 9,248.64       | Geophysical Survey on Scotian Slope, South West Sable Island, Eagle, Primrose   | N              |
| 8620-S006-009E<br>x-ref 8620-S6-2E<br>x-ref 8624-S6-9E | 06-Oct-72                     | 9,248.64       | Geophysical Survey on Scotian Slope, South West Sable Island, Eagle, Primrose   | N              |
| 8620-S014-001E   | 09-Dec-74                     | 150.87         | Geophysical Report on East Anticosti Island   | N              |
| 8620-S014-002E   | 07-Dec-74                     | 289.47         | Geophysical Report on the Mecatina and Banc-Beauge, Gulf of St. Lawrence, Onshore PEI, Naufrage and East Point Areas    | N              |
| 8620-S014-004E   | 15-Feb-75                     | 3,411.07       | Report on the Geophysical Exploration of Onshore PEI, Beaton Point, Northumberland , Miramichi & Baie Georges Areas     | N              |

| Program No.                                    | Completion Date<br>(dd/mm/yy) | Length<br>(km)   | Report Description  | Mylar<br>(Y/N) |
|--|-------------------------------|------------------|---|----------------|
| 8620-S014-006E                                 | 24-Jul-83                     | 13,239.85        | Marine Reflection Seismic Survey Over the Scotian Shelf Area (Including West Slope Area, West Banquereau, East Banquereau, Sable, and Scotia Basin) | Y              |
| 8620-S024-001P                                 | 31-Oct-72                     | 5,857.77         | 1972 East Coast Marine Participation Survey Offshore Nova Scotia and Newfoundland (Grand Banks)   | Y              |
| 8620-T007-001E                                 | 31-Jul-68                     | 5,233.44         | 1968 Marine Gravity Meter and Magnetometer Survey, Magdalen Islands Area, Gulf of St. Lawrence.   |                |
| 8620-T007-005E                                 | 29-Jul-71                     | 408.41           | Marine Vibroseis Survey, Cabot Strait   | N              |
| 8620-T007-007E                                 | 22-Aug-73                     | 2,228.88         | Geophysical Survey Cabot Strait   | N              |
| 8621C004-01E                                   | 17-Jan-67                     | 2,575.00         | Aeromagnetic and Summary of Seismic Exploration   | N              |
| 8621-C055-002E                                 | 23-May-82                     | 13,741.00        | Report on Airborne Magnetometer Survey in the Scotia Shelf Area of Eastern Canada   | N              |
| NS21-G006-001P                                 | 15-Jul-99<br>10-Oct-99        | 20,244<br>71,348 | Aeromagnetic Survey – Sable Sub-basin<br>Laurentian Basin   | N              |
| 8621-G014-001E                                 | 20-Nov-65                     | 772.78           | Aeromagnetic and Seismic Survey, Offshore Nova Scotia   | N              |
| 8621-M003-001E                                 | 21-Sept-59<br>27-Nov-59       | NA               | Summary of Reconnaissance and Aeromagnetic Survey, Sable Island Area  | N              |
| NS21-S086-001E                                 | 15-Mar-99                     | 15,500.00        | Aeromagnetic Survey of Area Adjacent to Sable Island and Venture, Thebaud and North Triumph Jacked Installation Points                              | N              |
| 8623-S009-001E                                 | 22-Aug-73                     | NA               | 1973 Gravity Survey of the Offshore Yarmouth, Nova Scotia Area  | N              |
| 8624-A004-004E                                 | 16-Nov-67                     | N/A              | 1967 Geophysical Seismograph Reflection Survey - Gulf of St. Lawrence   | N              |
| 8624-A004-013E / 014E<br>x-ref 8627-A004-014DA | 08-Oct-72                     | 1,124.25         | 1972 Seismic Survey Trade, Participation on the Scotian Shelf   | N              |
| 8624-A004-015E                                 | 22-May-74                     | 321.05           | Report on 1974 Geophysical Activity, Scotian Shelf Area, Ranger West Acreage  | N              |
| 8624-A004-018E                                 | 04-Jun-74                     | 232.86           | Report on 1974 Geophysical Activity, Scotian Shelf Area, 'Joe Phillips' Acreage   | N              |
| 8624-A024-001E                                 | 18-Oct-76                     | 135.98           | Reflection Seismic Survey, West Sable Island Area   | Y              |
| 8624-B004-001E                                 | 08-Oct-69                     | 197.90           | Reflection Seismic Marine Survey  | N              |

| <b>Program No.</b>                  | <b>Completion Date<br/>(dd/mm/yy)</b> | <b>Length<br/>(km)</b> | <b>Report Description</b>   | <b>Mylar<br/>(Y/N)</b> |
|-------------------------------------|---------------------------------------|------------------------|---|------------------------|
| 8624-B011-003E                      | 05-Nov-82                             | 2,270.07               | Deep Reflection Seismic Program, North Abenaki  | Y                      |
| 8624-B011-004E                      | 10-Jun-83                             | 1,094.68               | Deep Reflection Seismic Program, Sable Regional   | Y                      |
| 8624-B011-005E                      | 13-Aug-83                             | 1,082.03               | Deep Reflection Seismic Program, East Banquereau Block  | Y                      |
| 8624-B011-006E<br>x-ref 8624-B11-4E | 13-Aug-83                             | 750.85                 | Deep Reflection Seismic Program, North Abenaki  | Y                      |
| 8624-B011-007E                      | 22-Apr-84                             | 186.70                 | Deep Reflection Seismic Program over East Banquereau Block (South Sable III)                                | Y                      |
| 8624-B011-008E                      | 30-Oct-84                             | 482.00                 | Deep Reflection Seismic Program over East Banquereau Block  | Y                      |
| 8624-C004-001E                      | 03-Aug-69                             | 1,287.44               | Marine Seismograph Survey of the Blanc A, Green Bank Area   | N                      |
| 8624-C004-07E                       | 21-Oct-80                             | 1,535.95               | Gulf of St. Lawrence 1980 Report on the Geophysical Survey  | Y                      |
| 8624-C004-009E                      | 26-Jul-81                             | 698.00                 | Report on Geophysical Survey, Northumberland Strait   | Y                      |
| 8624-C004-010E                      | 10-Aug-81                             | 970.00                 | Report on Geophysical Survey , Gulf of St. Lawrence   | Y                      |
| 8624-C004-013E                      | 18-Jul-82                             | 282.82                 | Report on Geophysical Survey , Gulf of St. Lawrence   | N                      |
| 8624-C004-014E                      | 22-Jul-82                             | 444.20                 | Report on Geophysical Survey, Northumberland Strait, Stanhope, Cape Tormentine and St. Georges Bay Areas    | N                      |
| 8624-C012-001E                      | 06-Oct-71                             | 1,460.70               | Marine Seismic Reflection Survey in the Belle Island and Anticosti Island Areas of the Gulf of St. Lawrence | N                      |
| 8624-C012-002E                      | 12-Jul-71                             | 511.78                 | Marine Seismic Reflection Survey off the Coast of Nova Scotia   | N                      |
| 8624-C015-001P                      | 14-Oct-69                             | 1,957.23               | Gulf of St. Lawrence, Avalon and Scotian Shelf Marine Seismic Participation Survey                          | N                      |
| 8624-C015-002P/004P                 | 02-Oct-70                             | 2,731.16               | 1970 East Coast Marine Seismic Participation Survey, Gulf of St. Lawrence, NFLD, and Nova Scotia Shelf      | N                      |
| 8624-C015-003P                      | 13-Dec-70                             | 1,711.87               | Marine Seismic Reflection Participation Survey  | N                      |
| 8624-C020-001E                      | 20-Sep-72                             | 5,259.19               | Report on Seismograph Survey, Nova Scotia Shelf   | N                      |
| 8624-C033-001E/002E                 | 13-Oct-73                             | 282.80                 | Marine Seismic Survey, Mohican and Primrose Prospects   | N                      |

| <b>Program No.</b>                                     | <b>Completion Date<br/>(dd/mm/yy)</b> | <b>Length<br/>(km)</b>  | <b>Report Description</b>  | <b>Mylar<br/>(Y/N)</b> |
|--|---------------------------------------|-------------------------|--|------------------------|
| 8624-C034-001E   | 24-Dec-69                             | 465.08                  | Marine Vibroseis Survey in the Browns Bank Area                            | N                      |
| 8624-C055-003E   | 01-Oct-82                             | 1,439.10                | Final Report on Seismic Survey, Sable Island Area                          | Y                      |
| 8624-C055-004E   | 24-Jun-83                             | 572.00                  | 1983 Seismic Reflection Survey , Yarmouth Block (E.A. 262)                 | Y                      |
| 8624-C055-007E   | 11-Jul-85                             | 543.48                  | 1985 Seismic Reflection Survey , Whycocomagh Block (E.A. 270)              | Y                      |
| 8624-D001-001P/002P                                    | 06-Oct-70<br>01-Dec--70               | 2,293.41                | Seismic Survey, Canadian East Coast Offshore Canada                        | N                      |
| 8624-D001-003P   | 20-Dec-71                             | 3,432.09                | Seismic Survey, Scotian Shelf and Grand Banks                              | N                      |
| 8624-D001-004P   | 27-Jul-72                             | 1,399.18                | Seismic Survey in the Area of Scotian Shelf and Grand Banks                | N                      |
| 8624-D003-002E<br>x-ref 8624-D9-2E                     | 16-Jul-82                             | 1,040.95                | Reflection Seismic Program, East Sable Area                                | Y                      |
| 8624-D004-001P   | 25-Sep-67                             | 1,025.12                | Regional Marine Vibroseis Survey, Gulf of St. Lawrence & Northern Atlantic | N                      |
| 8624-D009-002E<br>x-ref 8624-D3-2E<br>x-ref 8624-D3-3E | 16-Jul-82                             | 1,040.95                | Reflection Seismic Program, East Sable Area                                | Y                      |
| NS24-E040-001E   | 25-Oct-01                             | 430 km <sup>2</sup>     | Marine 3D Seismic Reflection Survey – Cree                                 | Y                      |
| NS24-E040-001E   | 06-Sep-01                             | 245 km <sup>2</sup>     | Marine 3D Seismic Reflection Survey -Glenelg                               | Y                      |
| NS24-E040-001E   | 25-Sep-01                             | 585 km <sup>2</sup>     | Marine 3D Seismic Reflection Survey –Eagle/Chebucto                        | Y                      |
| NS24-E043-001E   | 07-Jul-02                             | 450.04 km <sup>2</sup>  | Marine 3D Survey, Scotian Shelf Survey Abenaki                             | Y                      |
| NS24-E043-002E   | 28-Jun-03                             | 1766.77 km <sup>2</sup> | 3D Seismic Survey over Stonehouse  | N                      |
| NS24-G001-001E   | 01-Oct-98                             | 187.00                  | 2D Marine Seismic Survey – St. Pierre / Miquelon                           | Y                      |
| NS24-G001-002E   | 04-Aug-01                             | 399.60                  | 2001 East Laurentian 2D Seismic Report – Final                             | N                      |
| 8624-G005-006P   | 01-Oct-82                             | 569.97                  | Speculative Survey, Gulf of St Lawrence, Scotian Shelf, Cabot Strait       | Y                      |
| 8624-G005-007P   | 05-Apr-84                             | 1,895.65                | Final Report Nova Scotia 1984 Geophysical Survey                           | Y                      |
| 8624-G005-008P   | 28-Jan-84                             | 1,044.50                | Onondaga 3D Reconnaissance Survey, Sable Island                            | Y                      |
| 8624-G005-010P   | 22-Oct-83                             | 35.00                   | Gulf of St. Lawrence - experimental lines                                  | N                      |

| Program No.                           | Completion Date<br>(dd/mm/yy) | Length<br>(km) | Report Description  | Mylar<br>(Y/N) |
|---------------------------------------|-------------------------------|----------------|---|----------------|
| NS24-G005-001P<br>xref NS24-G005-002P | 10-Apr-99                     | 14,722.23      | 2D Non-exclusive Seismic Survey, Barrington   | Y              |
| NS24-G005-002P                        | 8-Aug-00                      | 9,678.00       | 2D Seismic Survey, Barrington   | Y              |
| NS24-G005-003P                        | 1-Dec-2000                    | 2,107.90       | 2D Survey, Laurentian Channel   | Y              |
| 8624-G022-001E, 2E                    | 24-Oct-1983                   | 1,044.00       | Marine Seismic Reflection Survey, Gulf of St. Lawrence, North Shore                                   |                |
| NS24-G026-001E                        | 19-Aug-98                     | 120.00         | 1998 2D Marine Seismic, Scotian Shelf, South of Sable.  | N              |
| NS24-G026-001P                        | 19-Oct-98                     | 7,107.80       | 2D Deep Water Scotian Shelf.  | N              |
| NS24-G065-001P                        | 29-Oct-99                     | 25,006.38      | Marine Seismic Survey, Deep Water 2D East-South East Sable Island                                     | Y              |
| 8624-H005-001E                        | 19-Aug-83                     | 528.85         | 1983 Seismic Survey, East Sable Area, Louisbourg and Citadel Structures                               | Y              |
| 8624-H005-002E                        | 31-Oct-84                     | 86.00          | 1984 Seismic Survey, East Sable Area  | Y              |
| 8624-H006-004E                        | 10-Jun-83                     | 448.43         | Geophysical Survey, Chebucto Block (E.A. 781-004), Scotian Shelf                                      | Y              |
| 8624-H006-005E                        | 13-Aug-83                     | 544.65         | Geophysical Survey, South Sable II (E.A. 146), Scotian Shelf  | Y              |
| 8624-H006-007E                        | 03-May-84                     | 276.00         | Report on 1984 Seismic Program South Sable III (E.A. 146)   | Y              |
| 8624-H006-008E                        | 03-May-84                     | 478.00         | Report on 1984 Seismic Program , Gully block (E.A. 146)   | Y              |
| 8624-H006-010E                        | 14-Sep-85                     | 2,684.79       | Reflection Marine Seismograph, South Sable 3D Survey , Chebucto Area                                  | Y              |
| 8624-H007-001E<br>x-ref 8620-H6-9E    | 31-Aug-67                     | 2,044.77       | Report on Magnetometer, Gravity Meter, and Seismograph Surveys, Gulf of St. Lawrence in 1967 and 1968 | N              |
| 8624-H007-003E                        | 04-Jul-72                     | 83.68          | Report on Seismograph Surveys, Gulf of St. Lawrence, around P. E. I.                                  | N              |
| 8624-H007-003E                        | 04-Jul-72                     | 524.26         | Marine Vibroseis Survey, P.E. I.  | N              |
| 8624-H007-006E                        | 18-Nov-73                     | 125.52         | Marine Seismograph Survey, Offshore P. E. I.  | N              |
| 8624-H007-010E                        | 22-Aug-81                     | 1,134.78       | Marine Seismic Survey, East Sable Prospect  | N              |
| NS24-J014-001P                        | 5-Sep-98                      | 2,011.90       | 1998 Survey Processing Report, Scotian Shelf East   | Y              |
| 8624-L023-001E<br>(NS24-L023-001E)    | 06-Nov-89                     | 503.05         | Reflection Seismic Report, East Coast 2D Seismic Survey, Scotia Shelf                                 | Y              |

| Program No.                         | Completion Date<br>(dd/mm/yy) | Length<br>(km)         | Report Description  | Mylar<br>(Y/N) |
|-------------------------------------|-------------------------------|------------------------|---|----------------|
| NS24-L023-002E                      | 06-Jul-90                     | 106.70 km <sup>2</sup> | Reflection Seismic Report, Panuke 3D Seismic Survey, Scotian Shelf            | Y              |
| NS24-L023-003E                      | 16-Jun-90                     | 43.98                  | Reflection Seismic Report, East Coast 90 Seismic Survey, Scotian Shelf        | Y              |
| NS24-L023-004E                      | 28-Aug-91                     | 49.73 km <sup>2</sup>  | Reflection Seismic Report, Musquodobiot 3D Seismic Survey, Scotian Shelf      | Y              |
| NS24-L023-004E                      | 03-Sep-91                     | 326.28                 | Reflection Seismic Report, South Panuke 2D Seismic Survey                     | Y              |
| 8624-M003-002E, 003E                | 09-Oct-70                     | 5,574.10               | Geophysical Report on Banquereau Bank, Sable Island, and Grand Banks          | Y              |
| 8624-M003-004E                      | 06-Sep-71                     | 1,786.32               | Geophysical Report in the Sable, South Sable and Banquereau Areas             | Y              |
| 8624-M003-007E                      | 22-Nov-71                     | 906.03                 | Geophysical Report on St. Georges Bay Area                                    | N              |
| 8624-M003-010E                      | 12-Aug-72                     | 444.18                 | Geophysical Survey, Sable Island Area   | N              |
| 8624-M003-011E                      | 17-Jul-72                     | 1,308.86               | 1972 Geophysical Report, South Sable Island                                   | N              |
| 8624-M003-012E                      | 14-Jun-72                     | 510.15                 | 1972 Geophysical Report, Banquereau Bank                                      | N              |
| 8624-M003-014E                      | 20-Jun-1973<br>8-Sep-1973     | 1,923.17               | 1973 Geophysical Report, South Sable Island                                   | N              |
| 8624-M003-015E                      | 27-Aug-73                     | 154.49                 | 1972 Geophysical Report, Sable Island   | N              |
| 8624-M003-016E<br>x-ref 8624-M7-14E | 26-Aug-73                     | 962.36                 | 1972 Geophysical Report, Banquereau Bank                                      | N              |
| 8624-M003-019E                      | 05-Sep-73                     | 495.66                 | 1973 Seismic and Gravity Report contained in 8620-M3-15E                      | Y              |
| 8624-M003-020E                      | 13-Nov-73                     | 205.99                 | Geophysical Report-Scotian Shelf-West Sable, Cree E-35 & Demascota G-32 Areas | N              |
| 8624-M003-021E<br>x-ref 8624-M3-16E | 09-Nov-73                     | 86.71                  | Geophysical Report, Banquereau Bank   | N              |
| 8624-M003-022E<br>x-ref 8620-M3-15E | 13-Nov-73                     | 173.73                 | Geophysical Report, Sable Island  | N              |
| 8624-M003-023E<br>x-ref 8624-M3-16E | 11-Nov-73                     | 509.22                 | Geophysical Report, Banquereau Bank   | N              |
| 8624-M003-024E                      | 26-Jun-75                     | 323.63                 | Geophysical Report, South Banquereau  | N              |
| 8624-M003-025E<br>x-ref 8624-M3-24E | 15-Jun-75                     | 345.03                 | Geophysical Report, Sable Island  | Y              |
| 8624-M003-030E                      | 27-Jun-77                     | 260.00                 | Geophysical Report, Sable Island Area   | Y              |
| 8624-M003-033E                      | 22-Jul-79                     | 1,261.63               | Marine Seismic Report, Sable Island Area                                      | Y              |

| Program No.                         | Completion Date<br>(dd/mm/yy) | Length<br>(km)          | Report Description   | Mylar<br>(Y/N) |
|-------------------------------------|-------------------------------|-------------------------|--|----------------|
| 8624-M003-035E                      | 22-Sep-80                     | 1,527.29                | 1980 Marine Geophysical Survey, Sable Island Area  | Y              |
| 8624-M003-041E                      | 29-Jun-81                     | 1,755.95                | Marine Seismic Survey, East Banquereau Area  | N              |
| 8624-M003-044E<br>x-ref 8624-M3-45E | 14-Aug-82                     | 1,421.88                | 2D Marine Geophysical Survey, Sable Island Area  | Y              |
| 8624-M003-045E                      | 08-Aug-82                     | 281.25                  | Broadside and Experimental Seismic Programs, Sable Island                                      | Y              |
| 8624-M003-047E                      | 13-Aug-83                     | 1,252.28                | 1983 2D Marine Seismic Survey, East Sable Island Area  | Y              |
| 8624-M003-049E                      | 17-Aug-84                     | 2,456.45                | 1984 Marine Seismic Survey, Sable Island Area  | Y              |
| NS24-M003-001E                      | 31-Aug-90                     | 97.03                   | Geophysical Report of 2D Marine Seismic Survey, Sable Island Area                              | Y              |
| NS24-M003-002E                      | 24-Jul-91                     | 1,273.38                | Geophysical Report of 2D Marine Seismic Survey, Sable Island Area                              | Y              |
| NS24-M003-003E                      | 25-Aug-96                     | 262.77km <sup>2</sup>   | Canada-Nova Scotia Sable Area 3D Ocean Bottom Cable Reflection Program 1996 (Venture )         | Y              |
| NS24-M003-003E                      | 29-Oct-96                     | 283.89km <sup>2</sup>   | Canada-Nova Scotia Sable Area 3D Ocean Bottom Cable Reflection Program 1996 (Thebaud)          | Y              |
| NS24-M003-06E                       | 16-Jun-97                     | 318 km <sup>2</sup>     | Geophysical Report for 1997 (North Triumph 3D)   | N              |
| NS24-M003-06E                       | 18-Sep-97                     | 276 km <sup>2</sup>     | Geophysical Report for 1997 ( Alma, 3D)  | N              |
| NS24-M003-06E                       | 18-Sep-97                     | 506 km <sup>2</sup>     | Geophysical Report for 1997 ( EL 2356 Seismic Program, 3D)                                     | N              |
| NS24-M003-07E                       | 1-Jun-98<br>6-Sept-98         | 1440 km <sup>2</sup>    | Geophysical Final Report for 3D Marine Seismic Survey Program (Marmora, South Sable & Arcadia) | Y              |
| NS24-M003-09E                       | 11-Nov-99                     | 263 km <sup>2</sup>     | 3D OBC Seismic Survey – Sable Area 1999  | Y              |
| NS24-M003-010E                      | 08-Jun-99                     | 551.7 km <sup>2</sup>   | Intrepid Marine 3D Seismic Survey Program 1999   | Y              |
| 8624-M006-001E                      | 21-Jun-71                     | 519.70                  | Reflection Seismic Survey, Cabot Strait, Offshore Cape Breton Island                           | N              |
| 8624-M006-002E                      | 10-May-75                     | 33.75                   | Experimental Reflection Seismic Survey, Offshore Cape Breton Island                            | Y              |
| NS24-M055-001E                      | 15-Oct-03                     | 2259.00 km <sup>2</sup> | Cortland-Empire 3D Prospect, S.E. Sable Island   | Y              |
| 8624-N005-001E                      | 22-Sep-82                     | 1,130.15                | Report of 1982 Marine Seismic Survey, North Sable Island Area                                  | Y              |

| <b>Program No.</b>                   | <b>Completion Date<br/>(dd/mm/yy)</b> | <b>Length<br/>(km)</b>  | <b>Report Description</b>  | <b>Mylar<br/>(Y/N)</b> |
|--------------------------------------|---------------------------------------|-------------------------|--|------------------------|
| 8624-N005-002E                       | 05-Jun-83                             | 821.28                  | 1983 Final Report on Reconnaissance Seismic Reflection Survey, Sable Island Area                         | Y                      |
| NS24-N011-001E                       | 08-Jul-92                             | 1,691.10                | Final Report on the 3D Seismic Survey on Penobscot E. L. 2353, Offshore Nova Scotia                      | Y                      |
| 8624-O011-001E                       | 04-Sep-81                             | 832.00                  | 1981 Final Geophysical Report, Scotian Shelf Seismic Program   | N                      |
| NS24-P003-002E                       | 30-May-00                             | 1925.68 km <sup>2</sup> | 3D Marine Geophysical Survey, Huckleberry  | N                      |
| NS24-P003-002E                       | 09-Aug-00                             | 369.57 km <sup>2</sup>  | 3D Marine Geophysical Survey, Torbrook   | N                      |
| NS24-P003-003E                       | 26-Sep-00                             | 2,833.73                | 2D Marine Survey, The Dales, Scotian Shelf   | Y                      |
| NS24-P003-004E                       | 27-Jun-01<br>31-Jul-01                | 1138.9 km <sup>2</sup>  | Barrington 3D Acquisition & 3D Seismic Survey<br>Weymouth 3D Acquisition & 3D Seismic Survey             | Y                      |
| 8624-P028-001E                       | 21-Oct-77                             | 394.45                  | Marine Geophysical Survey, Western Shelf, Albatross  | Y                      |
| 8624-P028-002E                       | 28-Jun-78                             | 1,117.05                | Final Report on Marine Geophysical Survey, Shelburne   | Y                      |
| 8624-P028-015E                       | 23-Feb-81                             | 1,100.30                | 1981 Marine Reflection Seismic, Gravity & Magnetic Survey, Banquereau Prospect                           | N                      |
| 8624-P028-025E                       | 10-Dec-81                             | 1,460.78                | Marine Reflection Seismic, Gravity & Magnetic Survey, Cabot Strait Offshore Nova Scotia and Newfoundland | Y                      |
| 8624-P028-028E                       | 22-Sep-81                             | 570.40                  | Marine Reflection Seismic, Gravity & Magnetic Survey-Banquereau Area                                     | Y                      |
| 8624-P028-029E                       | 28-Mar-82                             | 2,867.53                | Marine Reflection Seismic, Gravity & Magnetic Survey, North Sable & North Abenaki                        | Y                      |
| 8624-P028-030E                       | 24-Dec-81                             | 700.00                  | Marine Reflection Seismic, Gravity & Magnetic Survey, Orpheus Area                                       | Y                      |
| 8624-P028-034E<br>x-ref 8624-P28-51E | 25-May-82                             | 1,084.33                | Marine Reflection Seismic, Gravity & Magnetic Survey, Western Scotian Shelf                              | Y                      |
| 8624-P028-035E                       | 06-May-82                             | 320.13                  | 1982 Marine Reflection Seismic, Gravity & Magnetic Survey, Cabot Strait                                  | Y                      |
| 8624-P028-036E                       | 06-Jun-82                             | 528.90                  | Marine Reflection Seismic, Gravity & Magnetic Survey-Banquereau Area                                     | Y                      |
| 8624-P028-046E                       | 27-Sep-82                             | 2,007.38                | 1982 Marine Reflection Seismic, Gravity & Magnetic Survey, East Banquereau                               | Y                      |
| 8624-P028-049E                       | 12-Nov-82                             | 2,024.13                | Final Report-Mohican Basin, Scotian Shelf  | Y                      |
| 8624-P028-050E                       | 26-Oct-82                             | 443.90                  | 1982 Marine Reflection Seismic, Gravity & Magnetic Survey, Albatross                                     | Y                      |

| <b>Program No.</b>                   | <b>Completion Date<br/>(dd/mm/yy)</b> | <b>Length<br/>(km)</b> | <b>Report Description</b>   | <b>Mylar<br/>(Y/N)</b> |
|--------------------------------------|---------------------------------------|------------------------|---|------------------------|
| 8624-P028-051E<br>x-ref 8624-P28-34E | 23-Nov-82                             | 599.80                 | Marine Reflection Seismic, Gravity & Magnetic Survey, Western Scotian Shelf                                     | Y                      |
| 8624-P028-054E, 055E                 | 28-Oct-82                             | 57.53                  | Marine Seismic Report, Banquereau/Orphan East   | N                      |
| 8624-P028-056E                       | 19-Feb-83                             | 210.33                 | 1983 Marine Reflection Seismic, Gravity & Magnetic Survey, St. Paul, Cabot Strait, Nova Scotia and Newfoundland | Y                      |
| 8624-P028-057E                       | 07-Aug-83                             | 325.93                 | 1983 Marine Reflection Seismic, Gravity & Magnetic Survey-Sydney Basin  | Y                      |
| 8624-P028-060E                       | 11-Sep-83                             | 573.43                 | 1983 Marine Reflection Seismic, Gravity & Magnetic Survey, Bonnet Prospect                                      | Y                      |
| 8624-P028-068E                       | 20-Nov-83                             | 416.00                 | 1983 Marine Reflection Seismic, Gravity & Magnetic Survey, Orpheus Area   | Y                      |
| 8624-P028-069E                       | 19-Apr-84                             | 358.50                 | 1984 Marine Reflection Seismic, Gravity & Magnetic Survey, Western Scotian Shelf                                | Y                      |
| 8624-P028-071E                       | 08-Mar-85                             | 1,295.00               | Geophysical Program Report of Air, Gun Marine Reflection Seismic, Gravity & Magnetic Survey-Mohican Basin Area  | Y                      |
| 8624-P028-072E                       | 29-May-85                             | 1,498.53               | 1982 Marine Reflection Seismic, Gravity & Magnetic Survey-Regional Offshore Nova Scotia                         | Y                      |
| 8624-P028-073E                       | 21-Apr-85                             | 1,198.08               | 1985 Marine Reflection Seismic, Gravity & Magnetic Survey, North Sable Area                                     | Y                      |
| 8624-P028-084E<br>(3D)               | 01-Aug-86                             | 613.37                 | 1986 Cohasset Seismic Survey 3D, West Sable Island Area   | Y                      |
| 8624-S001-001E                       | 20-Jun-71                             | 276.01                 | Final Report on the Marine Seismic Survey-Burgeo Bank   | N                      |
| 8624-S006-001E                       | 01-Sep-64                             | 2,460.62               | Regional Seismic Survey, Scotian Shelf  | N                      |
| 8624-S006-003E<br>x-ref 8624-S6-4E   | 28-Aug-68                             | 2,930.53               | Geophysical Report- East Coast Offshore Nova Scotia 1968-1969   | N                      |
| 8624-S006-004E<br>x-ref 8624-S6-3E   | 25-Sep-69                             | 6,865.27               | Geophysical Report, East Coast Offshore Nova Scotia 1968-1969   | N                      |
| 8624-S006-005E, 006E                 | 12-Mar-70<br>13-Oct-70                | 683.95<br>14721.87     | 1970 Geophysical Report, Scotia Shelf, Wyandot, Ojibwa, Abenaki, Iroquois, Huron, Cree and Argo Areas           | N                      |
| 8624-S006-008E                       | 20-Aug-71                             | 9,116.68               | 1971 Geophysical Report, Scotia Shelf-Chippewa, Huron, Mohican and Sauk   | N                      |

| Program No.  | Completion Date<br>(dd/mm/yy) | Length<br>(km)  | Report Description   | Mylar<br>(Y/N) |
|--|-------------------------------|-----------------|--|----------------|
| 8624-S006-009E<br>x-ref 8620-S6-9E<br>x-ref 8620-S6-2E | 06-Oct-72                     | 9,248.60        | Geophysical Survey on Scotian Slope, South West Sable Island, Eagle, & Primrose  | N              |
| 8624-S006-011E   | 23-Oct-73                     | 877.06          | Geophysical Progress Report, Gulf of St. Lawrence  | N              |
| 8624-S006-012E   | 02-Aug-73                     | 8,548.60        | 1973 Geophysical Report, Onondaga, Oneida, Wenonah, Hawkeye, Dolphin & Carbonate Edge                                      | N              |
| 8624-S006-015E   | 22-Oct-73                     | 90.12           | Geophysical Report on a Seismic Survey off Western Newfoundland  | Y              |
| 8624-S006-018E   | 03-Jul-75                     | 32.19           | Marine Seismic Survey, Scotian Block East Coast Offshore 1975  | N              |
| 8624-S006-020E   | 31-Jul-76                     | 1,369.35        | Seismic Survey, East Coast Offshore, Slope 32, Moheida, South Sable, Wenonah, Onondaga & Albatross                         | Y              |
| 8624-S006-022E   | 04-Nov-76                     | 318.70          | Geophysical Progress Report East Coast Offshore 1976   | Y              |
| 8624-S006-023E<br>x-ref 8624-S6-27E                    | 01-Aug-80                     | 3,003.00        | Reflection Seismic Report, North and South Sable Area, Offshore Nova Scotia  | Y              |
| 8624-S006-025E, 26E                                    | 26-Jan81<br>17-Jan-81         | 400.57<br>725.5 | Final Reflection Seismic Report on Western Slope and South Acadia Areas  | N              |
| 8624-S006-027E<br>x-ref 8624-S6-23E                    | 15-Sep-81                     | 2,353.00        | Reflection Seismic Programm in South Sable Area, Offshore Nova Scotia  | Y              |
| 8624-S006-028E, 031E                                   | 31-Aug-81                     | 2,447.87        | Reflection Seismic Progress Report, South Acadia, Panasonic, E. Panasonic and Python                                       | N              |
| 8624-S006-032E   | 19-Oct-82                     | 5,716.72        | Reflection Seismic Program, Brown's Bank, Medway, South Acadia, Mira Bay, Glace Bay, Tor Bay and Python Areas on the Slope | Y              |
| 8624-S006-033E<br>x-ref 8624-S6-27E                    | 26-Oct-82                     | 4,832.36        | Reflection Seismic Final Report, North and South Sable Areas   | Y              |
| 8624-S006-035E   | 26-May-83                     | 2,081.20        | Reflection Seismic Final Report, Panasonic, Glace Bay and East Panasonic Areas   | Y              |
| 8624-S006-036E   | 22-Jun-83                     | 686.03          | Reflection Seismic in Brown's Bank, South Acadia and Mira Bay Areas  | Y              |
| 8624-S006-037E   | 27-Jul-83                     | 3,750.14        | Reflection Seismic in Hawkeye, Mulgrave, Lunenburg, Glenelg and Triumph Areas  | Y              |
| 8624-S006-038E   | 12-Sep-83                     | 438.00          | Reflection Seismic in Banquereau, Python and Acadia Areas  | Y              |
| 8624-S006-041E   | 27-Jul-85                     | 10,469.75       | Final Report on 1984/85/86 Seismic Processing, Nova Scotia Shelf Glenelg Area 3D Seismic Survey                            | Y              |

| <b>Program No.</b>    | <b>Completion Date<br/>(dd/mm/yy)</b> | <b>Length<br/>(km)</b> | <b>Report Description</b>  | <b>Mylar<br/>(Y/N)</b> |
|-----------------------|---------------------------------------|------------------------|--|------------------------|
| 8624-S006-042E        | 28-Sep-84                             | 674.00                 | Reflection Seismic Final Report, Nova Scotia Offshore Slope, Panasonic and Browns Bank Areas | Y                      |
| 8624-S006-043E        | 08-Sep-84                             | 2,556.40               | Final Report on 1984 Seismic Nova Scotia Shelf, North and South Sable Areas                  | Y                      |
| 8624-S006-045E        | 17-Dec-84                             | 320.50                 | Final Report on 1984 Seismic Aquisition, Banquereau  | Y                      |
| 8624-S006-046E        | 16-Apr-85                             | 390.10                 | Final Report on the Como-Panuke Survey 1985  | Y                      |
| 8624-S006-047E        | 06-Oct-85                             | 167.63                 | Final Report on 1985 Seismic Aquisition, Nova Scotia Slope                                   | Y                      |
| 8624-S006-048E        | 04-Oct-85                             | 1,930.00               | Final Report on 1985 Seismic Aquisition, Nova Scotia Shelf                                   | Y                      |
| 8624-S006-050E        | 29-Jun-87                             | 195.21                 | Final Report on 1987 Seismic Aquisition, Nova Scotia Shelf                                   | N                      |
| NS24-S006-001E / 002E | 15-Jun-01                             | 14,088.30              | 3D Thrumcap Survey Geophysical Report  | Y                      |
| 8624-S009-001E        | 14-Oct-74                             | 1,455.06               | 1974 Offshore Seismic Survey of the Yarmouth Block S.W. Nova Scotia                          | N                      |
| 8624-S014-001E        | 27-Jul-71                             | 2,454.18               | Marine Vibroseis Report , Gulf of St. Lawrence   | Y                      |
| 8624-S014-002E        | 3-Dec-70                              | 1,752.25               | Marine Vibroseis Report in Estuary, Gulf of St. Lawrence and Bay of Chaleur                  | N                      |
| 8624-S014-003E        | 29-Oct-72                             | 776.18                 | Report on the Geophysical Work of the Bradelle Project for SOQUIP                            | N                      |
| 8624-S014-004E        | 29-Oct-72                             | 86.45                  | Report on the Geophysical Work Relative to the Magdalen Islands Project                      | N                      |
| 8624-S014-005E        | 14-Dec-74                             | 283.72                 | Geophysical Report, Magdalen, Block B  | N                      |
| 8624-S014-008E        | 07-Jul-81                             | 3,118.03               | Geophysical Report for 1980-81 Seismic Survey, Gulf of St. Lawrence                          | Y                      |
| 8624-S014-009E        | 03-Jul-81                             | 182.58                 | Geophysical Report for the 1981 Reflcction Seismic Survey, Gulf of St. Lawrence              | N                      |
| 8624-S014-010E        | 12-Jun-81                             | 402.00                 | Seismic Survey 1981, Gulf of St. Lawrence  | N                      |
| 8624-S014-011E        | 23-Jul-81                             | 1,087.48               | Final Report on Marine Seismic Survey, Bane Beauge & Mecatina Areas                          | N                      |
| 8624-S014-012E        | 26-Jul-82                             | 1,046.55               | Geophysical Report for the 1982 Seismic Survey, Gulf of St. Lawrence                         | Y                      |
| 8624-S014-013E        | 15-Sep-82                             | 3,332.39               | Geophysical Report for the 1982 Seismic Survey   | Y                      |

| <b>Program No.</b> | <b>Completion Date<br/>(dd/mm/yy)</b> | <b>Length<br/>(km)</b>  | <b>Report Description</b>   | <b>Mylar<br/>(Y/N)</b> |
|--------------------|---------------------------------------|-------------------------|---|------------------------|
| 8624-S014-014E     | 20-Dec-82                             | 345.60                  | Geophysical Report for the 1982 Seismic Survey, Gulf of St. Lawrence                              | Y                      |
| 8624-T007-002E     | 01-Sep-67                             | 804.65                  | Marine Digital Seismic Survey, Gulf of St. Lawrence   | N                      |
| 8624-T007-003E     | 02-Oct-69                             | 2,724.24                | Marine Vibroseis Survey, Gulf of St. Lawrence 1969  | N                      |
| 8624-T007-004E     | 12-Oct-69                             | 627.56                  | 1969 Marine Vibroseis Survey, Cabot Strait  | N                      |
| 8624-T007-006E     | 14-Oct-70                             | 1,134.25                | Marine Vibroseis Survey, Cabot Strait   | N                      |
| 8624-T007-007E     | 23-Sep-70                             | 405.89                  | Marine Vibroseis Survey, Gulf of St. Lawrence   | N                      |
| 8624-T007-011E     | 26-Nov-74                             | 1,566.38                | Cabot Strait Geophysical Survey   | N                      |
| 8624-T013-001E     | 24-Oct-70                             | 581.63                  | Marine Vibroseis Survey , LaHave Basin and Gulf of Maine  | N                      |
| 8624-T013-002E     | 05-Dec-73                             | 382.41                  | Final Report on the Burgeo Bank, Marine Seismic Survey  | N                      |
| 8624-T021-004E     | 18-Jun-78                             | 251.48                  | Final Report, Shelburne   | Y                      |
| 8624-T021-006E     | 28-Nov-80                             | 426.23                  | Final Report, West Albatross, Western Scotian Shelf   | Y                      |
| 8624-T021-008E     | 07-Jul-81                             | 410.00                  | Albatross, Scotian Shelf 1981 Seismic Survey  | Y                      |
| 8624-V001-001E     | 22-Oct-70                             | 90.12                   | Report on Marine Seismic Survey Conducted October 1971, The Rich Point Straits of Belle Isle Area | N                      |
| 8624-W013-001P     | 01-Aug-83                             | 3,910.21                | Final Report on Marine Seismic Survey of East Coast Canada, Nova Scotia Area 1983                 | Y                      |
| 8624-W013-002P     | 01-Sep-84                             | 1,103.50                | 1984 Marine Speculative Survey, Sable Island  | Y                      |
| 8624-W013-005P     | 12-Mar-85                             | 2,057.29                | Final Report Marine Seismic Survey of East Coast Canada, Nova Scotia Area 1985                    | Y                      |
| NS24-W013-001P     | 5-Oct-98                              | 11,587                  | Nova Scotia 2000- 2D Seismic Survey   | N                      |
| NS24-W013-002P     | 27-Nov-99                             | 4,163.9 km <sup>2</sup> | Nova Scotia 2000 - 3D Seismic Survey  | N                      |
| NS24-W013-003P     | 20-May-00                             | 158.22 km <sup>2</sup>  | Nova Scotia 200- 3D Seismic Survey  | N                      |
| 8625-M003-001E     | 26-Aug-71                             | N/A                     | Geophysical Report Refraction Survey, TECTO Sable Island E-48                                     | N                      |
| 8625-S006-001E     | 29-Apr-73                             | 148.22                  | Geophysical Report East Coast Nova Scotia   | N                      |

| <b>Program No.</b>                                       | <b>Completion Date<br/>(dd/mm/yy)</b> | <b>Length<br/>(km)</b> | <b>Report Description</b>   | <b>Mylar<br/>(Y/N)</b> |
|--|---------------------------------------|------------------------|---|------------------------|
| 8625-S006-002E   | 26-Feb-73                             | 34.04                  | Geophysical Report East Coast Nova Scotia   | N                      |
| 8627-A004-016DA  | Apr-76                                | N/A                    | Geophysical Interpretation Report, Gulf of St. Lawrence   |                        |
| 8627-A014-002P<br>xref 8627-C022-02DA                    | 1974                                  | N/A                    | Geophysical & Geological Setting of Permits; Gulf of St. Lawrence & Orpheus Anomaly East Coast Area     | N                      |
| 8627-C004-002DA  | Jul-71                                | 2,364.37               | Summary of Exploration Misaine & Orpheus Banks Marine Seismic Program 1970                              | N                      |
| 8627-C004-003DA  | Jul-71                                | 297.24                 | Summary of Exploration Anticosti Island Marine Seismic Program 1970                                     | N                      |
| 8627-C004-08DA   | 02-Oct-70                             | 297.24                 | Summary of Exploration Offshore Anticosti Island  | N                      |
| 8627-C022-002DA<br>xref 8624-C014-002P                   | 1974                                  | N/A                    | Geophysical & Geological Setting of Permits; Gulf of St. Lawrence & Orpheus Anomaly East Coast Offshore | N                      |
| 8627-D003-001E   | Mar-84                                | 204.05                 | Final Report, Northumberland Area 1983 Seismic Reprocessing   | Y                      |
| NS27-D031-001DA<br>xref 8624-G005-002P<br>8620-S014-006E | 1999                                  | 1,730.00               | Evaluation of EL2388, Scotian Basin, Offshore Nova Scotia   |                        |
| 8627-G001-001DA  | 15-Mar-71                             | 1,383.99               | Marine Reflection Seismic Interpretation  | N                      |
| 8627-G001-002DA  | 23-Mar-77                             | 328.29                 | Final Geophysical Report, Gulf of St. Lawrence  | N                      |
| 8627-H007-001DA<br>8627-A014-002P                        | 1974                                  | N/A                    | Geophysical & Geological Setting of Permits; Gulf of St. Lawrence & Orpheus Anomaly East Coast Offshore | N                      |
| 8627-H007-002E<br>xref 8624-H007-003E                    | 09-Sep-1974                           | 1,146.50               | Reprocessing and Interpretation of a Geophysical Survey - Gulf of St. Lawrence                          | N                      |
| 8627-J001-002E   | 1977                                  | N/A                    | Reprocessing Report on Geophysical Data 1976-77 - Orphan Knoll  | N                      |
| 8627-M003-001DA  | Dec-70                                | N/A                    | Geophysical Interpretation, Catalina Data   | N                      |
| 8627-M003-002DA  | 29-Sep-71                             | N/A                    | Geophysical Interpretation, Catalina Exploration  | N                      |
| 8627-M003-010DA  | Sep-73                                | N/A                    | Geophysical Interpretation, East Coast Offshore   | N                      |
| 8627-M006-001DA<br>x-ref 8624-D004-001P                  | 03-Mar-70                             | N/A                    | Analysis of Vibroseis in Gulf of St Lawrence & Sydney Basin   | N                      |
| 8627-M006-003DT<br>x-ref 8620-M6-1E                      | 10-Oct-70                             | 1,402.62               | 1971 Gravity and Magnetic Results (Data Aquisition) Offshore Cape Breton                                | N                      |

| <b>Program No.</b>                                       | <b>Completion Date<br/>(dd/mm/yy)</b> | <b>Length<br/>(km)</b> | <b>Report Description</b>   | <b>Mylar<br/>(Y/N)</b> |
|--|---------------------------------------|------------------------|---|------------------------|
| 8627-M006-004DA  | May-72                                | 901.21                 | Interpretation of Seismic Data from the Orpheus Basin               | N                      |
| 8627-M006-005DT  | 10-Jul-73                             | 337.95                 | Interpretation of Seismic Data from the Orpheus Basin               | N                      |
| 8627-M006-006E   | 01-May-76                             | N/A                    | 1975 Experimental Data Processing, Cabot Strait                     | N                      |
| NS27-M055-001DA<br>xref NS24-V003-003P<br>NS24-M055-001E | 31-Dec-03                             | N/A                    | 3D Reprocessing Report, Annapolis                                   | Y                      |
| 8627-P011-002DA,<br>003DA                                | 03-Nov-72                             | 2,413.95               | Marine Reflection Survey, Scotian Shelf                             | N                      |
| 8627-P028-001DA  | Nov-79                                | 804.65                 | Interpretation of Seismic Data, Western Shelf and Acadia Areas      | N                      |
| 8627-S003-001DA,<br>002DA                                | Nov-71                                | 522.01                 | Geophysical Progress Report, East Coast Offshore Nova Scotia 1971   | N                      |
| 8627-S006-004DA<br>x-ref 8620-G5-1P                      | 23-Feb-72                             | 593.83                 | Geophysical Progress Report, East Coast Offshore Nova Scotia 1972   | N                      |
| 8627-S006-014DA  | Jul-73                                | 838.56                 | Geophysical Progress Report, East Coast Offshore Nova Scotia 1973   | N                      |
| 8627-S006-016E   | Apr-75                                | 4,551.10               | Geophysical Progress Report, East Coast Offshore Nova Scotia 1974   | N                      |
| 8627-S006-018E   | 30-Jan-76                             | 2,155.98               | Geophysical Progress Report, East Coast Offshore Nova Scotia 1975   | Y                      |
| 8627-S006-021E   | 15-Jun-77                             | 321.97                 | Geophysical Progress Report, Seismic Reprocessing, Albatross 1976   | N                      |
| 8627-S008-001DA  | Aug-72                                | 1,343.77               | East Coast Marine Seismic Participation Survey                      | N                      |
| 8627-T007-002DA  | 31-Dec-70                             | 836.84                 | Scotian Shelf Project Nova Scotia Canada                            | N                      |
| 8627-T007-011DA  | Nov-75                                | 836.84                 | Project Report on Seismic Purchase, Scotian Shelf                   | N                      |
| 8627-T021-001DA  | 03-Mar-78                             | 442.56                 | 1977 Work Report, West Albatross                                    | N                      |
| 8627-T036-001P   | 30-Oct-84                             | 14,160.00              | The Scotian Shelf a Comprehensive Geological and Geophysical Study  | N                      |
| NS27-T057-001DA  | 5-Apr-09                              | 4,100.00               | 2D Seismic Reprocessing & Interpretation Report - EL2378 and EL2379 | Y                      |
| 8627-U003-001E   | 30-Jun-74                             | 19,311.60              | Data Purchase and Interpretation, Scotian Shelf                     | N                      |

## 7. DIRECTORY OF OFFSHORE WELLS

**Abbreviations:** P & , Plugged & Abandoned  
P & ! Plugged & Suspended  
PRO Producing Well

**Note:** Wells are arranged alpha-numerically. Asterisk (\*) indicates sidetracked well.  
For development wells, first completion date and first termination date are shown.

| Well Name              | D#  | Latitude<br>Longitude | Drilling<br>Unit | Spud<br>Rig<br>Release<br>yy/mm/dd | RT Elevation<br>Water Depth<br>m (ft) |           | Total<br>Depth<br>m (ft) | Status<br>(Classification) |
|------------------------|-----|-----------------------|------------------|------------------------------------|---------------------------------------|-----------|--------------------------|----------------------------|
| Abenaki J-56           | 10  | 44°15'44.59"          | Sedneth 1        | 70-12-04                           | 25.9                                  | (85.0)    | 4,569.0                  | P&A                        |
| Shell                  |     | 59°53'03.02"          |                  | 71-03-13                           | 106.7                                 | (350.0)   | (14,991.0)               | (dry)                      |
| Abenaki L-57           | 16  | 44°16'34.49"          | Sedco H          | 70-05-28                           | 31.4                                  | (103.0)   | 2,178.0                  | P&A                        |
| Shell                  |     | 59°53'39.64"          |                  | 70-07-06                           | 108.8                                 | (357.0)   | (7,147.0)                | (dry)                      |
| Acadia K-62            | 171 | 42°51'43.54"          | Ben Ocean        | 78-04-11                           | 12.8                                  | (42.0)    | 5,286.0                  | P&A                        |
| Chevron-PEX-Shell      |     | 61°55'02.08"          | Lancer           | 78-08-02                           | 866.2                                 | (2,842.0) | (17,343.0)               | (dry)                      |
| Adamant N-97           | 369 | 43°56'48.08"          | Galaxy II        | 00-11-05                           | 48.7                                  | (159.7)   | 4,708.0                  | P&A                        |
| Mobil et al            |     | 60°14'27.66"          |                  | 01-02-04                           | 16.9                                  | (55.4)    | (15,666.0)               | (gas show)                 |
| Adventure F-80         | 144 | 45°19'27.54"          | Sedco J          | 75-01-13                           | 29.9                                  | (98.1)    | 1,999.0                  | P&A                        |
| Mobil et al            |     | 57°56'22.80"          |                  | 75-02-22                           | 98.8                                  | (324.1)   | (6,559.0)                | (dry)                      |
| Albatross B-13         | 268 | 42°42'10.68"          | Sedco 710        | 84-12-12                           | 24.0                                  | (78.7)    | 4,046.0                  | P&A                        |
| Petro-Can-Texaco et al |     | 63°02'11.83"          |                  | 85-03-28                           | 1,341.0                               | (4,399.0) | (13,274.0)               | (dry)                      |
| Alma F-67              | 239 | 43°36'17.98"          | Sedco 709        | 83-12-02                           | 24.0                                  | (78.7)    | 5,054.0                  | P&A                        |
| Shell-Petro-Can et al  |     | 60°39'56.29"          |                  | 84-07-05                           | 68.0                                  | (155.7)   | (16,581.0)               | (gas well)                 |
| Alma K-85              | 267 | 43°34'44.32"          | Sedco 709        | 85-01-29                           | 24.0                                  | (78.7)    | 3,602.0                  | P&A                        |
| Shell PCI et al        |     | 60°43'01.69"          |                  | 85-04-10                           | 65.3                                  | (223.1)   | (11,817.0)               | (gas well)                 |
| Alma 1 N-76            | 385 | 43°35'46.74"          | Galaxy II        | 03-05-04                           | 46.4                                  | (152.2)   | 4,851.0                  | PROD                       |
| ExxonMobil             |     | 60°41'21.92"          |                  | 03-11-09                           | 66.6                                  | (218.5)   | (15,915.0)               | (gas well)                 |
| Alma 2 N-76            | 387 | 43°35'46.80"          | Galaxy II        | 03-06-17                           | 46.4                                  | (152.2)   | 3,790.0                  | PROD                       |
| ExxonMobil             |     | 60°41'21.82"          |                  | 03-11-28                           | 66.6                                  | (218.5)   | (12,434.0)               | (gas well)                 |
| Alma 3 N-76            | 399 | 43°35'46.72"          | Galaxy II        | 06-02-08                           | 56.7                                  | (186.0)   | 3,380.0                  | PROD                       |
| ExxonMobil             |     | 60°41'21.69"          |                  | 06-04-11                           | 66.6                                  | (218.5)   | (11,089.2)               | (gas well)                 |
| Alma 4 N-76            | 401 | 43°35'46.66"          | Rowan            | 09-06-08                           | 49.7                                  | (163.0)   | 3,985.0                  | P&A                        |
| Exxon Mobil            |     | 60°41'21.79"          | Gorilla III      | 09-08-14                           | 66.6                                  | (218.5)   | (13,074.1)               | (gas well)                 |

| Well Name             | D#  | Latitude<br>Longitude | Drilling<br>Unit | Spud<br>Rig<br>Release<br>yy/mm/dd | RT Elevation     |           | Total<br>Depth<br>m (ft) | Status<br>(Classification) |
|-----------------------|-----|-----------------------|------------------|------------------------------------|------------------|-----------|--------------------------|----------------------------|
|                       |     |                       |                  |                                    | Water Depth<br>m | (ft)      |                          |                            |
| Alma 4A               | 403 | 43°35'46.66           | Rowan            | 09-08-08                           | 40.9             | 134.1     | 4,329.0                  | PROD                       |
| Exxon Mobil           |     | 60°41'21.79"          | Gorilla III      | 09-10-05                           | 66.6             | 218.5     | (14,202.8)               | (gas well)                 |
| Annapolis B-24        | 374 | 43°23'07.91"          | West             | 01-12-26                           | 35.5             | (116.4)   | 3,496.0                  | P&A                        |
| Marathon Canada       |     | 59°48'38.15"          | Navion           | 02-04-24                           | 1,737.0          | (5,698.8) | (11,470.0)               | (gas show)                 |
| Annapolis G-24        | 378 | 43°23'22.94"          | West             | 02-04-17                           | 35.5             | (116.5)   | 6,182.0                  | P&A                        |
| Marathon Canada       |     | 59°48'29.19"          | Navion           | 02-08-16                           | 1,711.0          | (5,613.5) | (20,282.0)               | (gas well)                 |
| Arcadia J-16          | 225 | 44°05'43.59"          | Zapata           | 83-01-27                           | 38.1             | (125.0)   | 6,005.0                  | P&A                        |
| Mobil et al           |     | 59°31'58.19"          | Scotian          | 83-07-19                           | 55.5             | (182.1)   | (19,701.0)               | (gas well)                 |
| Argo F-38             | 17  | 45°27'23.22"          | Sedco H          | 70-12-17                           | 31.4             | (103.0)   | 3,386.0                  | P&A                        |
| Shell                 |     | 58°50'24.34"          |                  | 71-02-19                           | 71.6             | (234.9)   | (11,110.0)               | (dry)                      |
| Balmoral M-32         | 320 | 43°51'54.89"          | Rowan            | 91-02-26                           | 38.0             | (133.2)   | 2,525.0                  | P&A                        |
| LASMO NSR(V)L         |     | 60°35'46.73"          | Gorilla III      | 91-04-09                           | 34.0             | (111.5)   | (8,284.0)                | (oil well)                 |
| Balvenie B-79         | 388 | 43°08'01.29"          | Erik Raude       | 03-07-06                           | 25.0             | (82.0)    | 4,750.0                  | P&A                        |
| Imperial Oil          |     | 60°10'56.84"          |                  | 03-09-06                           | 1,803.0          | (5,915.3) | (15,584.0)               | (dry)                      |
| Banquereau C-21       | 207 | 44°10'07.52"          | Bow Drill I      | 81-12-02                           | 27.0             | (88.6)    | 4,991.0                  | P&A                        |
| Petro-Canada et al    |     | 58°34'00.24"          |                  | 82-08-01                           | 83.0             | (272.3)   | (16,374.0)               | (gas well)                 |
| North Banquereau I-13 | 214 | 44°12'33.16"          | Bow Drill I      | 82-08-02                           | 25.0             | (82.0)    | 5,188.0                  | P&A                        |
| Petro-Canada et al    |     | 58°31'49.38"          |                  | 82-12-28                           | 91.0             | (298.6)   | (17,021.0)               | (dry)                      |
| Bluenose G-47         | 94  | 44°06'20.79"          | Sedco J          | 73-01-25                           | 29.9             | (98.1)    | 4,587.0                  | P&A                        |
| Mobil-Tetco           |     | 59°21'27.35"          |                  | 73-04-25                           | 81.4             | (267.1)   | (15,050.0)               | (gas show)                 |
| Bluenose 2-G-47       | 223 | 44°06'22.30"          | John Shaw        | 82-12-30                           | 24.4             | (80.1)    | 5,797.0                  | P&A                        |
| Mobil et al           |     | 59°21'23.05"          |                  | 83-09-05                           | 85.3             | (279.9)   | (19,019.0)               | (gas show)                 |
| Bonnet P-23           | 244 | 42°22'48.64"          | Bow Drill I      | 84-01-14                           | 25.0             | (82.0)    | 4,336.0                  | P&A                        |
| Petro-Canada et al    |     | 65°03'01.89"          |                  | 84-04-04                           | 133.5            | (438.0)   | (14,226.0)               | (dry)                      |
| Cap Rouge F-52        | 103 | 47°11'20.29"          | Sedco H          | 73-06-08                           | 31.1             | (102.0)   | 5,059.0                  | P&A                        |
| Shell Amoco           |     | 61°08'15.24"          |                  | 73-09-03                           | 56.7             | (186.0)   | (16,598.0)               | (dry)                      |
| Chebucto K-90         | 242 | 43°39'44.73"          | Bow Drill II     | 84-01-06                           | 22.8             | (74.8)    | 5,235.0                  | P&A                        |
| Husky/Bow Valley      |     | 59°42'51.52"          |                  | 84-08-02                           | 86.2             | (357.6)   | (17,175.0)               | (gas well)                 |
| Chippewa G-67         | 68  | 44°36'20.50"          | Sedco H          | 71-10-28                           | 24.7             | (81.0)    | 3,670.0                  | P&A                        |
| Shell                 |     | 58°39'44.62"          |                  | 71-12-18                           | 67.7             | (222.1)   | (12,040.0)               | (dry)                      |
| Chippewa L-75         | 30  | 44°34'35.87"          | Sedneth 1        | 71-07-12                           | 29.9             | (98.0)    | 2,126.0                  | P&A                        |
| Shell                 |     | 58°41'50.54"          |                  | 71-08-12                           | 70.1             | (229.9)   | (6,975.0)                | (dry)                      |

| Well Name           | D#  | Latitude<br>Longitude | Drilling<br>Unit | Spud<br>Rig<br>Release<br>yy/mm/dd | RT Elevation     |         | Total<br>Depth<br>m (ft) | Status<br>(Classification) |
|---------------------|-----|-----------------------|------------------|------------------------------------|------------------|---------|--------------------------|----------------------------|
|                     |     |                       |                  |                                    | Water Depth<br>m | (ft)    |                          |                            |
| Citadel H-52        | 260 | 44°11'25.07"          | Glomar           | 84-12-18                           | 38.3             | (125.7) | 5,666.0                  | P&A                        |
| Home Oil et al      |     | 58°52'39.87"          | Labrador 1       | 85-05-29                           | 65.3             | (214.2) | (18,589.0)               | (dry)                      |
| Citnalta I-59       | 123 | 44°08'42.58"          | Sedco J          | 74-02-04                           | 29.9             | (98.1)  | 4,575.0                  | P&A                        |
| Mobil-Tetco-Texaco  |     | 59°37'32.11"          |                  | 74-04-29                           | 94.5             | (310.0) | (15,010.0)               | (gas well)                 |
| Cohasset A-52       | 294 | 43°51'08.11"          | Rowan            | 85-12-19                           | 40.0             | (131.2) | 2,847.0                  | P&A                        |
| Petro-Canada et al  |     | 60°37'39.99"          | Gorilla I        | 86-03-27                           | 36.0             | (118.1) | (9,340.0)                | (oil well)                 |
| Cohasset CP1 P-51   | 328 | 43°50'57.15"          | Rowan            | 93-05-08                           | 41.5             | (136.2) | 2,472.0                  | P&A                        |
| LASMO NSR(V)L       |     | 60°37'39.99"          | Gorilla III      | 93-06-05                           | 43.0             | (141.1) | (8,110.0)                | (oil well)                 |
| Cohasset CP2 P-51   | 330 | 43°50'57.06"          | Rowan            | 93-06-05                           | 41.5             | (136.2) | 2,337.0                  | P&A                        |
| LASMO NSR(V)L       |     | 60°37'40.17"          | Gorilla III      | 93-06-29                           | 43.0             | (141.1) | (7,667.0)                | (oil well)                 |
| Cohasset CP3 P-51   | 331 | 43°50'57.11"          | Rowan            | 93-06-30                           | 41.5             | (136.2) | 2,750.0                  | P&A                        |
| LASMO NSR(V)L       |     | 60°37'39.90"          | Gorilla III      | 93-07-29                           | 43.0             | (141.1) | (9,023.0)                | (oil well)                 |
| Cohasset CP3A P-51  | 341 | 43°50'57.11"          | Rowan            | 95-10-23                           | 41.5             | (136.2) | 4,620.0                  | P&A                        |
| PanCanadian NS Ltd  |     | 60°37'39.90"          | Gorilla III      | 96-02-15                           | 43.0             | (141.1) | (15,158.0)               | (oil well)                 |
| Cohasset CP4 P-51   | 332 | 43°50'57.16"          | Rowan            | 93-07-30                           | 41.5             | (136.2) | 2,525.0                  | P&A                        |
| LASMO NSR(V)L       |     | 60°37'40.22"          | Gorilla III      | 93-08-19                           | 43.0             | (141.1) | (8,284.0)                | (oil well)                 |
| Cohasset CP5 P-51   | 333 | 43°50'57.05"          | Rowan            | 93-08-19                           | 41.5             | (136.2) | 2,613.0                  | P&A                        |
| LASMO NSR(V)L       |     | 60°37'39.95"          | Gorilla III      | 93-12-10                           | 43.0             | (141.1) | (8,573.0)                | (oil well)                 |
| Cohasset CP6 P-51   | 334 | 43°50'57.02"          | Rowan            | 93-08-25                           | 41.5             | (136.2) | 3,067.0                  | P&A                        |
| LASMO NSR(V)L       |     | 60°37'40.09"          | Gorilla III      | 93-09-13                           | 43.0             | (141.1) | (10,063.0)               | (oil well)                 |
| Cohasset CP6A P-51  | 335 | 43°50'57.02"          | Rowan            | 93-09-16                           | 41.5             | (136.2) | 2,660.0                  | P&A                        |
| LASMO NSR(V)L       |     | 60°37'40.09"          | Gorilla III      | 93-09-30                           | 43.0             | (141.1) | (8,728.0)                | (oil well)                 |
| Cohasset CP6B P-51  | 336 | 43°50'57.02"          | Rowan            | 93-10-05                           | 41.5             | (136.2) | 2,595.0                  | P&A                        |
| LASMO NSR(V)L       |     | 60°37'40.09"          | Gorilla III      | 93-10-23                           | 43.0             | (141.1) | (8,414.0)                | (oil well)                 |
| Cohasset CP6C P-51  | 345 | 43°50'57.02"          | Rowan            | 97-05-06                           | 41.5             | (136.2) | 2,639.0                  | P&A                        |
| PanCanadian NS Ltd. |     | 60°37'40.09"          | Gorilla III      | 97-06-30                           | 43.0             | (141.1) | (8,658.0)                | (oil well)                 |
| Cohasset CP7 P-51   | 337 | 43°50'56.99"          | Rowan            | 93-10-24                           | 41.5             | (136.2) | 3,376.0                  | P&A                        |
| LASMO NSR(V)L       |     | 60°37'39.99"          | Gorilla III      | 93-11-21                           | 43.0             | (141.1) | (11,076.0)               | (oil well)                 |
| Cohasset CP7A P-51  | 338 | 43°50'56.99"          | Rowan            | 93-12-11                           | 41.5             | (136.2) | 2,740.0                  | P&A                        |
| LASMO NSR(V)L       |     | 60°37'39.99"          | Gorilla III      | 93-12-28                           | 43.0             | (141.1) | (8,990.0)                | (oil well)                 |

| Well Name           | D#  | Latitude<br>Longitude | Drilling<br>Unit | Spud<br>Rig<br>Release<br>yy/mm/dd | RT Elevation<br>Water Depth<br>m (ft) |           | Total<br>Depth<br>m (ft) | Status<br>(Classification) |
|---------------------|-----|-----------------------|------------------|------------------------------------|---------------------------------------|-----------|--------------------------|----------------------------|
| Cohasset CP8 P-51   | 339 | 43°50'57.21"          | Rowan            | 94-09-29                           | 41.5                                  | (136.2)   | 2,555.0                  | P&A                        |
| LASMO / NSR(V)L     |     | 60°37'39.94"          | Gorilla III      | 94-11-24                           | 43.0                                  | (141.1)   | (8,383.0)                | (oil well)                 |
| Cohasset CP9 P-51   | 340 | 43°50'57.12"          | Rowan            | 94-10-10                           | 41.5                                  | (136.2)   | 2,560.0                  | P&A                        |
| LASMO / NSR(V)L     |     | 60°37'40.13"          | Gorilla III      | 94-11-29                           | 43.0                                  | (141.1)   | (8,399.0)                | (oil well)                 |
| Cohasset CP10 P-51  | 342 | 43°50'57.09"          | Rowan            | 96-06-29                           | 41.5                                  | (136.2)   | 2,833.0                  | P&A                        |
| PanCanadian NS Ltd  |     | 60°37'40.04"          | Gorilla III      | 96-07-26                           | 43.0                                  | (141.1)   | (9,294.0)                | (oil well)                 |
| Cohasset CP10A P-51 | 343 | 43°50'57.09"          | Rowan            | 96-10-29                           | 41.5                                  | (136.2)   | 3,107.0                  | P&A                        |
| PanCanadian NS Ltd  |     | 60°37'40.04"          | Gorilla III      | 96-11-28                           | 43.0                                  | (141.1)   | (10,194.0)               | (oil well)                 |
| Cohasset CP10B P-51 | 344 | 43°50'57.09"          | Rowan            | 97-01-05                           | 41.5                                  | (136.2)   | 2,485.0                  | P&A                        |
| PanCanadian NS Ltd  |     | 60°37'40.04"          | Gorilla III      | 97-02-09                           | 43.0                                  | (141.1)   | (8,153.0)                | (oil well)                 |
| Cohasset D-42       | 96  | 43°51'06.52"          | Sedco J          | 73-04-27                           | 31.4                                  | (103.0)   | 4,427.0                  | P&A                        |
| Mobil-Tetco         |     | 60°37'13.89"          |                  | 73-07-16                           | 41.1                                  | (135.0)   | (14,525.0)               | (oil well)                 |
| Cohasset L-97       | 177 | 43°56'37.19"          | Gulftide         | 78-07-13                           | 32.9                                  | (100.1)   | 4,872.0                  | P&A                        |
| Mobil-Tetco-PEX     |     | 60°29'58.55"          |                  | 78-11-13                           | 21.6                                  | (70.9)    | (15,984.0)               | (gas show)                 |
| Cohasset P-42       | 174 | 43°51'50.32"          | Gulftide         | 78-06-09                           | 30.5                                  | (100.1)   | 2,591.0                  | P&A                        |
| Mobil-Tetco-PEX     |     | 60°36'18.23"          |                  | 78-07-10                           | 34.1                                  | (111.9)   | (8,500.0)                | (dry)                      |
| Como P-21           | 305 | 43°50'45.87"          | Rowan            | 87-05-15                           | 40.2                                  | (132.0)   | 3,540.0                  | P&A                        |
| Petro-Canada et al  |     | 60°48'19.28"          | Gorilla I        | 87-07-01                           | 39.0                                  | (127.0)   | (11,614.0)               | (dry)                      |
| Cree E-35           | 6   | 43°44'20.79"          | Sedco H          | 70-09-08                           | 31.4                                  | (103.0)   | 3,984.0                  | P&A                        |
| Shell               |     | 60°35'55.87"          |                  | 70-11-03                           | 53.3                                  | (175.0)   | (13,070.0)               | (gas show)                 |
| Cree I-34           | 393 | 43°43'41.48"          | Rowan            | 04-05-15                           | 49.0                                  | (160.8)   | 3,945.0                  | P&A                        |
| ExxonMobil          |     | 60°34'42.62"          | Gorilla V        | 04-08-14                           | 57.0                                  | (187.0)   | (12,942.9)               | (dry)                      |
| Crimson F-81        | 394 | 43°20'22.29"          | Deepwater        | 04-06-18                           | 21.4                                  | (70.2)    | 6,676.0                  | P&A                        |
| Marathon Canada     |     | 59°42'57.03"          | Pathfinder       | 04-08-27                           | 2,091.5                               | (6,624.0) | (21,404.0)               | (gas show)                 |
| Crow F-52           | 20  | 45°21'24.23"          | Sedneth 1        | 71-04-12                           | 25.9                                  | (85.0)    | 1,507.0                  | P&A                        |
| Shell               |     | 59°08'22.73"          |                  | 71-04-27                           | 94.5                                  | (310.0)   | (4,943.0)                | (dry)                      |
| Dauntless D-35      | 27  | 44°44'08.26"          | Sedco H          | 71-04-26                           | 31.4                                  | (103.0)   | 4,741.0                  | P&A                        |
| Mobil Tetco         |     | 57°20'46.62"          |                  | 71-07-16                           | 69.2                                  | (227.0)   | (15,555.0)               | (dry)                      |
| Demascota G-32      | 125 | 43°41'27.19"          | Sedco H          | 74-03-01                           | 29.9                                  | (98.0)    | 4,672.0                  | P&A                        |
| Shell               |     | 60°49'54.00"          |                  | 74-05-20                           | 54.3                                  | (178.0)   | (15,329.0)               | (dry)                      |
| Dominion J-14       | 398 | 43°53'33.28"          | Rowan            | 05-11-18                           | 47.5                                  | (155.8)   | 3,700.0                  | P&A                        |

| Well Name             | D#  | Latitude<br>Longitude | Drilling<br>Unit | Spud<br>Rig<br>Release<br>yy/mm/dd | RT Elevation     |         | Total<br>Depth<br>m (ft) | Status<br>(Classification) |
|-----------------------|-----|-----------------------|------------------|------------------------------------|------------------|---------|--------------------------|----------------------------|
|                       |     |                       |                  |                                    | Water Depth<br>m | (ft)    |                          |                            |
| EnCana Marauder       |     | 60°31'54.21"          | Gorilla VI       | 06-01-30                           | 29.5             | (96.8)  | (12,139.0)               | (dry)                      |
| Dominion J-14A        | 400 | 43°53'33.33"          | Rowan            | 05-12-30                           | 47.5             | (155.8) | (4,440.0)                | P&A                        |
| EnCana Marauder       |     | 60°31'54.21           | Gorilla VI       | 06-01-24                           | 29.5             | (96.8)  | (14,566.9)               | (dry)                      |
| Dover A-43            | 248 | 44°22'09.02"          | Bow Drill I      | 84-04-17                           | 25.0             | (82.0)  | 4,525.0                  | P&A                        |
| Petro-Can et al       |     | 60°06'09.28"          |                  | 84-07-10                           | 116.0            | (380.6) | (14,846.0)               | (dry)                      |
| Eagle D-21            | 80  | 43°50'06.73"          | Sedco H          | 72-04-22                           | 29.9             | (98.1)  | 4,660.0                  | P&A                        |
| Shell et al           |     | 59°34'09.21"          |                  | 72-07-02                           | 51.2             | (168.0) | (15,290.0)               | (gas show)                 |
| Emma N-03             | 365 | 44°02'47.78"          | Galaxy II        | 00-08-02                           | 45.7             | (149.9) | 4,600.0                  | P&A                        |
| Mobil Oil             |     | 60°00'53.78"          |                  | 00-11-01                           | 50.6             | (166.0) | (15,092.0)               | (dry)                      |
| Erie D-26             | 19  | 44°55'03.52"          | Sedneth 1        | 71-03-16                           | 25.9             | (85.0)  | 2,376.0                  | (P&A)                      |
| Shell                 |     | 59°34'29.82"          |                  | 71-04-11                           | 98.1             | (321.9) | (7,795.0)                | (oil show)                 |
| Esperanto K-78        | 13  | 44°47'31.26"          | Sedco H          | 71-03-09                           | 31.4             | (103.0) | 3,540.0                  | P&A                        |
| Mobilet al            |     | 58°11'19.24"          |                  | 71-04-24                           | 68.8             | (225.1) | (11,615.0)               | (dry)                      |
| Eurydice P-36         | 34  | 45°25'47.30"          | Sedco H          | 71-09-15                           | 29.9             | (98.1)  | 2,965.0                  | P&A                        |
| Shell                 |     | 60°04'46.97"          |                  | 71-10-24                           | 164.6            | (540.0) | (9,728.0)                | (dry)                      |
| Evangeline H-98       | 251 | 43°17'25.27"          | Bow Drill III    | 84-03-27                           | 23.5             | (70.9)  | 3,365.0                  | P&A                        |
| Husky/Bow Valley      |     | 60°58'48.40"          |                  | 84-06-16                           | 175.0            | (570.9) | (11,040.0)               | (dry)                      |
| (re-entered well)     |     |                       | Bow Drill II     | 84-08-08                           | 20.1             | (73.8)  | 5,044.0                  |                            |
|                       |     |                       |                  | 84-11-01                           | 175.0            | (570.9) | (16,549.0)               |                            |
| Fox I-22              | 23  | 45°21'33.58"          | Sedco H          | 71-02-20                           | 31.4             | (103.0) | 829.0                    | P&A                        |
| Shell                 |     | 59°33'16.03"          |                  | 71-03-03                           | 83.8             | (274.9) | (2,722.0)                | (dry)                      |
| Glenelg E-58 & E58A   | 256 | 43°37'17.51"          | Sedco 709        | 84-07-07                           | 24.0             | (787.0) | 4,192.0                  | P&A                        |
| Shell PCI et al       |     | 60°08'51.63"          |                  | 84-10-20                           | 79.0             | (259.2) | (13,753.0)               | (gas well)                 |
| Glenelg H-38          | 261 | 43°37'19.33"          | Sedco 709        | 84-10-26                           | 24.1             | (79.1)  | 4,865.0                  | P&A                        |
| Shell PCI et al       |     | 60°04'48.61"          |                  | 85-01-26                           | 89.3             | (293.0) | (15,961.0)               | (dry)                      |
| Glenelg H-59          | 384 | 43°38'15.67"          | Galaxy II        | 03-01-19                           | 48.7             | (159.7) | 4,116.0                  | P&A                        |
| ExxonMobil            |     | 60°07'47.15"          |                  | 03-03-17                           | 75.0             | (246.0) | (13,503.0)               | (gas well)                 |
| Glenelg J-48          | 226 | 43°37'38.57"          | Sedco 709        | 83-02-22                           | 24.0             | (78.7)  | 5,250.0                  | P&A                        |
| Shell Petro-Can et al |     | 60°06'24.84"          |                  | 83-11-07                           | 83.7             | (274.6) | (17,224.0)               | (gas well)                 |
| Glenelg N-49          | 299 | 43°38'59.43"          | Vinland          | 86-06-01                           | 23.2             | (76.1)  | 4,040.0                  | P&A                        |
| Shell PCI et al       |     | 60°07'02.10"          |                  | 86-08-04                           | 72.3             | (237.2) | (13,254.0)               | (gas well)                 |

| Well Name              | D#  | Latitude<br>Longitude | Drilling<br>Unit | Spud<br>Rig<br>Release<br>yy/mm/dd | RT Elevation     |         | Total<br>Depth<br>m (ft) | Status<br>(Classification) |
|------------------------|-----|-----------------------|------------------|------------------------------------|------------------|---------|--------------------------|----------------------------|
|                        |     |                       |                  |                                    | Water Depth<br>m | (ft)    |                          |                            |
| Glooscap C-63          | 231 | 43°12'09.83"          | Bow Drill II     | 83-08-07                           | 22.9             | (75.1)  | 4,542.0                  | P&A                        |
| Husky/Bow Valley et al |     | 62°09'56.75"          |                  | 84-01-03                           | 99.0             | (324.8) | (14,902.0)               | (dry)                      |
| Grand Pre G-08         | 348 | 43°57'24.10"          | Rowan            | 98-05-04                           | 42.4             | (139.0) | 2,382.0                  | P&A                        |
| PanCanadian            |     | 60°30'30.79"          | Gorilla II       | 98-06-03                           | 20.1             | (65.9)  | (7,815.0)                | (dry)                      |
| Hercules G-15          | 130 | 45°34'20.65"          | Sedco H          | 74-07-23                           | 29.9             | (98.1)  | 1,081.0                  | P&A                        |
| Union et al            |     | 58°47'13.06"          |                  | 74-08-01                           | 115.8            | (379.9) | (3,547.0)                | (dry)                      |
| Hesper I-52            | 162 | 44°41'40.33"          | Sedco H          | 76-05-08                           | 29.9             | (98.1)  | 2,804.0                  | P&A                        |
| Petro-Canada Mobil     |     | 57°52'32.24"          |                  | 76-06-05                           | 42.1             | (138.1) | (9,200.0)                | (dry)                      |
| Hesper P-52            | 257 | 44°41'50.95"          | Rowan            | 84-08-22                           | 40.5             | (132.9) | 5,679.0                  | P&A                        |
| Bow Valley/Husky et al |     | 57°52'47.72"          | Gorilla I        | 85-05-01                           | 44.5             | (146.0) | (15,632.0)               | (dry)                      |
| Huron P-96             | 11  | 44°35'47.11"          | Sedneth 1        | 70-07-22                           | 25.9             | (85.0)  | 3,018.0                  | P&A                        |
| Shell                  |     | 58°28'50.64"          |                  | 70-08-27                           | 57.9             | (190.0) | (9,903.0)                | (dry)                      |
| Intrepid L-80          | 126 | 43°49'35.78"          | Sedco J          | 74-05-18                           | 31.4             | (100.0) | 4,162.0                  | P&A                        |
| Texaco et al.          |     | 59°56'43.83"          |                  | 74-08-15                           | 43.6             | (142.0) | (13,655.0)               | (gas well)                 |
| Iroquois J-17          | 24  | 44°26'31.38"          | Sedco H          | 70-08-18                           | 31.4             | (103.0) | 2,086.0                  | P&A                        |
| Shell                  |     | 59°47'12.29"          |                  | 70-09-06                           | 59.4             | (194.9) | (6,845.0)                | (dry)                      |
| Jason F-20             | 131 | 45°29'05.45"          | Sedco H          | 74-07-03                           | 29.9             | (98.1)  | 2,483.0                  | P&A                        |
| Union et al            |     | 58°32'28.27"          |                  | 74-07-22                           | 112.8            | (370.1) | (8,146.0)                | (dry)                      |
| Kegeshook G-67         | 275 | 44°06'28.87"          | Glomar           | 85-06-11                           | 37.0             | (787.0) | 3,540.0                  | P&A                        |
| Shell PCI et al        |     | 60°24'31.26"          | Labrador 1       | 85-07-30                           | 62.0             | (203.4) | (11,614.0)               | (dry)                      |
| Lawrence D-14          | 319 | 43°53'04.79"          | Rowan            | 91-01-14                           | 40.0             | (131.2) | 2,850.0                  | P&A                        |
| LASMO NSRL             |     | 60°32'51.84"          | Gorilla III      | 91-02-24                           | 30.0             | (98.4)  | (9,350.0)                | (dry)                      |
| Louisbourg J-47        | 240 | 44°26'43.08"          | Glomar           | 83-11-25                           | 38.2             | (125.3) | 6,043.0                  | P&A                        |
| Home Oil et al         |     | 58°21'26.02"          | Labrador 1       | 84-10-13                           | 63.1             | (207.0) | (19,826.0)               | (gas show)                 |
| MarCoh D-41            | 390 | 43°50'09.48"          | Rowan            | 03-08-28                           | 47.6             | (156.2) | 3,625.0                  | P&A                        |
| EnCana                 |     | 60°37'21.56"          | Gorilla V        | 03-10-23                           | 43.4             | (142.3) | (11,893.0)               | (gas well)                 |
| Margaree E-70          | 402 | 43°49'16.94"          | Rowan            | 10-01-12                           | 40.9             | 134.2   | 2,539.0                  | P&S                        |
| EnCana                 |     | 60°40'20.18"          | Gorilla III      | 10-03-31                           | 41.0             | 134.5   | (8,330.0)                | injector                   |
| Margaree F-70          | 386 | 43°49'24.46"          | Rowan            | 03-05-21                           | 47.6             | (155.8) | 3,677.0                  | P&A                        |
| EnCana Corporation     |     | 60°39'54.85"          | Gorilla V        | 03-08-06                           | 42.5             | (139.4) | (12,064.0)               | (gas well)                 |
| Mariner I-85           | 392 | 44°04'30.74"          | Rowan            | 03-11-19                           | 47.0             | (154.2) | 5,408.0                  | P&A                        |
| Canadian Superior      |     | 59°42'07.20"          | Gorilla V        | 04-03-16                           | 55.5             | (182.1) | (17,743.0)               | (gas show)                 |

| Well Name         | D#  | Latitude<br>Longitude | Drilling<br>Unit | Spud<br>Rig<br>Release<br>yy/mm/dd | RT Elevation     |         | Total<br>Depth<br>m (ft) | Status<br>(Classification) |
|-------------------|-----|-----------------------|------------------|------------------------------------|------------------|---------|--------------------------|----------------------------|
|                   |     |                       |                  |                                    | Water Depth<br>m | (ft)    |                          |                            |
| Marmora C-34      | 70  | 43°43'13.79"          | Sedneth 1        | 72-01-15                           | 25.9             | (85.0)  | 4,038.0                  | P&A                        |
| Shell             |     | 60°05'21.93"          |                  | 72-03-31                           | 57.6             | (189.0) | (13,248.0)               | (gas show)                 |
| Marmora P-35      | 98  | 43°44'59.36"          | Sedco H          | 73-03-06                           | 29.9             | (98.1)  | 4,093.0                  | P&A                        |
| Shell et al       |     | 60°04'47.58"          |                  | 73-04-21                           | 53.3             | (174.9) | (13,428.0)               | (dry)                      |
| Marquis L-35      | 379 | 44°04'37.57"          | Rowan            | 02-07-06                           | 56.0             | (183.7) | 4,552.0                  | P&A                        |
| Canadian Superior |     | 60°20'52.72"          | Gorilla V        | 02-09-14                           | 48.0             | (154.2) | (14,934.4)               | (dry)                      |
| Marquis L-35A     | 380 | 44°04'37.57"          | Rowan            | 02-08-27                           | 56.0             | (183.7) | 4,552.0                  | P&A                        |
| Canadian Superior |     | 60°20'52.72"          | Gorilla V        | 02-09-14                           | 48.0             | (154.2) | (14,934.4)               | (dry)                      |
| Merigomish C-52   | 276 | 43°31'02.62"          | Sedco 706        | 85-06-15                           | 27.5             | (90.2)  | 3,950.0                  | P&A                        |
| Shell PCI et al   |     | 60°38'33.78"          |                  | 85-08-12                           | 75.0             | (246.1) | (12,959.0)               | (dry)                      |
| Mic Mac D-89      | 160 | 44°38'08.86"          | Sedco H          | 76-03-26                           | 29.9             | (98.1)  | 3,261.0                  | P&A                        |
| Shell et al       |     | 59°28'18.93"          |                  | 76-05-04                           | 85.3             | (279.9) | (10,700.0)               | (dry)                      |
| Mic Mac H-86      | 8   | 44°35'27.78"          | Sedneth 1        | 70-08-31                           | 25.9             | (85.0)  | 4,785.0                  | P&A                        |
| Shell             |     | 59°27'03.13"          |                  | 70-12-02                           | 54.3             | (178.1) | (15,700.0)               | (dry)                      |
| Mic Mac J-77      | 7   | 44°36'42.82"          | Sedneth 1        | 70-03-25                           | 26.0             | (85.3)  | 3,886.0                  | P&A                        |
| Shell             |     | 59°26'10.87"          |                  | 70-05-24                           | 62.8             | (206.0) | (12,750.0)               | (oil show)                 |
| Migrant N-20      | 170 | 43°59'56.24"          | Gulftide         | 77-07-29                           | 26.1             | (85.6)  | 4,669.0                  | P&A                        |
| Mobil-Tetco-PEX   |     | 60°17'18.23"          |                  | 78-01-23                           | 13.7             | (44.9)  | (15,318.0)               | (gas show)                 |
| Mississauga H-54  | 9   | 44°23'20.39"          | Sedneth 1        | 70-05-26                           | 25.9             | (85.0)  | 4,202.0                  | P&A                        |
| Shell             |     | 59°22'47.56"          |                  | 70-07-20                           | 102.1            | (335.0) | (13,787.0)               | (dry)                      |
| Mohawk B-93       | 5   | 42°42'10.52"          | Sedco H          | 70-05-03                           | 31.4             | (103.0) | 2,126.0                  | P&A                        |
| Shell             |     | 64°43'53.50"          |                  | 70-05-23                           | 117.0            | (383.9) | (6,975.0)                | (dry)                      |
| Moheida P-15      | 168 | 43°04'56.32"          | Sedco H          | 76-11-18                           | 29.9             | (98.1)  | 4,298.0                  | P&A                        |
| Petro-Can et al   |     | 62°16'44.33"          |                  | 77-02-15                           | 111.9            | (367.1) | (14,100.0)               | (dry)                      |
| Mohican I-100     | 74  | 42°59'39.04"          | Sedco H          | 71-12-27                           | 29.9             | (98.1)  | 4,393.0                  | P&A                        |
| Shell             |     | 62°28'51.32"          |                  | 72-03-10                           | 153.3            | (503.0) | (14,414.0)               | (dry)                      |
| Montagnais I-94   | 140 | 42°53'40.71"          | Sedco H          | 74-09-12                           | 29.9             | (98.1)  | 1,646.0                  | P&A                        |
| Union et al       |     | 64°13'46.51"          |                  | 74-09-29                           | 112.8            | (370.1) | (5,400.0)                | (dry)                      |
| Musquodoboit E-23 | 370 | 43°42'15.82"          | Rowan            | 01-07-01                           | 47.1             | (154.5) | 3,818.0                  | P&A                        |
| PanCanadian       |     | 60°49'09.99"          | Gorilla V        | 01-09-02                           | 47.3             | (155.2) | (12,526.0)               | (dry)                      |

| Well Name         | D#  | Latitude<br>Longitude | Drilling<br>Unit | Spud<br>Rig<br>Release<br>yy/mm/dd | RT Elevation<br>Water Depth<br>m (ft) |           | Total<br>Depth<br>m (ft) | Status<br>(Classification) |
|-------------------|-----|-----------------------|------------------|------------------------------------|---------------------------------------|-----------|--------------------------|----------------------------|
| Naskapi N-30      | 4   | 43°29'46.29"          | Sedneth 1        | 70-02-16                           | 26.0                                  | (85.3)    | 2,205.0                  | P&A                        |
| Shell             |     | 62°34'00.63"          |                  | 70-03-19                           | 95.1                                  | (312.0)   | (7,235.0)                | (dry)                      |
| Newburn H-23      | 377 | 43°12'16.43"          | Deepwater        | 02-05-22                           | 24.0                                  | (78.7)    | 6,070.0                  | P&A                        |
| Chevron Canada    |     | 60°48'21.20"          | Millennium       | 02-08-21                           | 977.0                                 | (3,205.3) | (19,915.0)               | (gas show)                 |
| N. Sydney F-24    | 163 | 46°33'23.13"          | Sedco H          | 76-06-09                           | 29.9                                  | (98.1)    | 1,707.0                  | P&A                        |
| Shell et al       |     | 59°48'45.47"          |                  | 76-06-14                           | 59.7                                  | (195.9)   | (5,600.0)                | (gas show)                 |
| N. Sydney P-05    | 134 | 46°34'46.24"          | Sedco H          | 74-08-10                           | 29.9                                  | (98.1)    | 1,661.0                  | P&A                        |
| Murphy et al      |     | 59°45'01.65"          |                  | 74-09-06                           | 62.8                                  | (206.0)   | (5,449.0)                | (gas show)                 |
| N. Triumph B-52   | 289 | 43°41'02.38"          | John             | 86-01-24                           | 24.0                                  | (72.2)    | 3,960.0                  | P&A                        |
| Shell PCI et al   |     | 59°52'56.87"          | Shaw             | 86-03-29                           | 81.0                                  | (272.3)   | (12,992.0)               | (gas well)                 |
| N. Triumph G-43   | 281 | 43°42'19.06"          | Sedco 709        | 85-09-26                           | 24.0                                  | (78.7)    | 4,504.0                  | P&A                        |
| Shell PCI et al   |     | 59°51'23.02"          |                  | 86-01-31                           | 73.6                                  | (241.5)   | (14,777.0)               | (gas well)                 |
| N. Triumph 1 P-42 | 361 | 43°41'58.31"          | Galaxy II        | 99-10-04                           | 54.7                                  | (179.4)   | 3,805.0                  | PROD.                      |
| SOEI              |     | 59°51'18.86"          |                  | 99-12-04                           | 75.4                                  | (247.4)   | (12,484.0)               | (gas well)                 |
| N. Triumph 2 P-42 | 363 | 43°41'58.19"          | Rowan            | 00-05-20                           | 45.1                                  | (147.9)   | 3,937.0                  | PROD.                      |
| SOEI              |     | 59°51'18.99"          | Gorilla II       | 00-07-05                           | 75.5                                  | (247.7)   | (12,917.0)               | (gas well)                 |
| Ojibwa E-07       | 121 | 43°46'20.44"          | Sedco H          | 74-02-04                           | 29.9                                  | (98.1)    | 2,330.0                  | P&A                        |
| Union et al       |     | 61°46'14.42"          |                  | 74-02-28                           | 75.6                                  | (248.0)   | (7,643.0)                | (dry)                      |
| Olympia A-12      | 213 | 44°01'03.27"          | Zapata           | 82-04-23                           | 38.0                                  | (125.0)   | 6,064.0                  | P&A                        |
| Mobil et al       |     | 59°46'44.09"          | Scotian          | 83-01-10                           | 40.0                                  | (130.9)   | (19,895.0)               | (gas well)                 |
| Oneida O-25       | 3   | 43°14'57.36"          | Sedneth 1        | 69-11-16                           | 25.9                                  | (85.0)    | 4,120.0                  | P&A                        |
| Shell             |     | 61°33'36.49"          |                  | 70-02-10                           | 82.3                                  | (270.0)   | (13,516.0)               | (dry)                      |
| Onondaga B-84     | 373 | 43°43'08.92"          | Galaxy II        | 01-11-17                           | 45.7                                  | (149.9)   | 5,019.0                  | P&A                        |
| Shell Canada      |     | 60°12'41.51"          |                  | 02-05-12                           | 59.7                                  | (195.8)   | (16,466.0)               | (gas well)                 |
| Onondaga B-96     | 158 | 43°45'08.21"          | Sedco H          | 76-01-12                           | 29.9                                  | (98.1)    | 3,758.0                  | P&A                        |
| Shell             |     | 60°14'09.76"          |                  | 76-03-21                           | 60.4                                  | (198.2)   | (12,328.0)               | (dry)                      |
| Onondaga E-84     | 2   | 43°43'16.13"          | Sedneth 1        | 69-09-01                           | 25.9                                  | (85.0)    | 3,988.0                  | P&A                        |
| Shell             |     | 60°13'17.18"          |                  | 69-11-11                           | 57.9                                  | (190.0)   | (13,085.0)               | (gas well)                 |
| Onondaga F-75     | 33  | 43°44'17.84"          | Sedco H          | 71-07-28                           | 31.4                                  | (103.0)   | 3,891.0                  | P&A                        |
| Shell             |     | 60°11'36.25"          |                  | 71-09-07                           | 56.4                                  | (185.0)   | (12,765.0)               | (dry)                      |
| Onondaga O-95     | 22  | 43°44'48.10"          | Sedco H          | 70-07-09                           | 31.4                                  | (103.0)   | 3,314.0                  | P&A                        |
| Shell             |     | 60°13'52.60"          |                  | 70-08-16                           | 53.9                                  | (176.8)   | (10,874.0)               | (gas show)                 |

| Well Name          | D#  | Latitude<br>Longitude | Drilling<br>Unit | Spud<br>Rig<br>Release<br>yy/mm/dd | RT Elevation     |         | Total<br>Depth<br>m (ft) | Status<br>(Classification) |
|--------------------|-----|-----------------------|------------------|------------------------------------|------------------|---------|--------------------------|----------------------------|
|                    |     |                       |                  |                                    | Water Depth<br>m | (ft)    |                          |                            |
| Panuke B-90        | 300 | 43°49'11.99"          | Vinland          | 86-08-06                           | 23.0             | (75.4)  | 3,445.0                  | P&A                        |
| Shell/PCI et al    |     | 60°42'34.59"          |                  | 86-09-24                           | 47.0             | (154.1) | (11,302.0)               | (oil well)                 |
| Panuke F-09        | 367 | 43°48'22.47"          | Rowan            | 00-08-23                           | 39.9             | (130.5) | 3,815.0                  | P&A                        |
| PacCanadian        |     | 60°45'57.64"          | Gorilla III      | 00-11-11                           | 42.0             | (137.8) | (12,516.0)               | (gas show)                 |
| Panuke F-99        | 307 | 43°48'24.90"          | Rowan            | 87-07-02                           | 40.2             | (279.0) | 2,507.0                  | P&A                        |
| Petro-Canada et al |     | 60°44'34.01"          | Gorilla I        | 87-08-24                           | 45.1             | (148.0) | (8,225.0)                | (oil well)                 |
| Panuke H-08        | 364 | 43°47'21.21"          | Rowan            | 00-05-25                           | 39.5             | (129.6) | 3,682.0                  | P&S                        |
| PanCanadian        |     | 60°45'19.93"          | Gorilla III      | 00-09-19                           | 36.5             | (119.7) | (12,080.0)               | (gas well)                 |
| Panuke M-79        | 366 | 43°48'49.85"          | Rowan            | 00-07-12                           | 46.0             | (150.9) | 4,598.0                  | P&A                        |
| PanCanadian        |     | 60°41'50.23"          | Gorilla IV       | 00-10-02                           | 43.5             | (142.7) | (15,085.0)               | (gas well)                 |
| Panuke M-79A       | 368 | 43°48'48.81"          | Rowan            | 00-10-11                           | 46.0             | (150.9) | 3,934.0                  | P&A                        |
| PanCanadian        |     | 60°41'47.42"          | Gorilla V        | 00-12-17                           | 43.5             | (142.7) | (12,907.0)               | (gas well)                 |
| Panuke PI1         | 324 | 43°48'40.19"          | Rowan            | 91-07-09                           | 47.2             | (154.8) | 1,082.0                  | P&A                        |
| LASMO NSR(V)L      |     | 60°44'00.13"          | Gorilla III      | 92-07-12                           | 44.0             | (144.4) | (3,550.0)                | (oil well)                 |
|                    |     |                       |                  | 93-02-24                           |                  |         |                          |                            |
| Panuke PI-1A       | 360 | 43°48'40.13"          | Rowan            | 99-08-27                           | 47.2             | (154.8) | 4,033.0                  | P&A                        |
| PanCanadian/NSRL   |     | 60°44'00.17"          | Gorilla III      | 99-11-11                           | 44.0             | (144.4) | (13,232.0)               | (gas well)                 |
| Panuke PI-1B       | 362 | 43°48'40.18"          | Rowan            | 99-11-11                           | 47.2             | (154.8) | 4,046.0                  | P&A                        |
| PanCanadian        |     | 60°44'00.13"          | Gorilla III      | 00-02-19                           | 44.0             | (144.4) | (13,274.0)               | (gas well)                 |
| Panuke PP1         | 321 | 43°48'40.14"          | Rowan            | 91-05-11                           | 47.2             | (154.8) | 3,031.0                  | P&A                        |
| LASMO NSR(V)L      |     | 60°44'00.25"          | Gorilla III      | 91-07-02                           | 44.7             | (144.6) | (9,945.0)                | (oil well)                 |
|                    |     |                       |                  | 93-02-24                           |                  |         |                          |                            |
| Panuke PP2         | 322 | 43°48'40.20"          | Rowan            | 91-07-18                           | 47.2             | (154.8) | 2,435.0                  | P&A                        |
| LASMO NSR(V)L      |     | 60°44'00.26"          | Gorilla III      | 92-01-04                           | 44.7             | (144.4) | (7,989.0)                | (oil well)                 |
|                    |     |                       |                  | 93-02-24                           |                  |         |                          |                            |
| Panuke PP3         | 323 | 43°48'40.23"          | Rowan            | 91-07-03                           | 47.2             | (154.8) | 2,685.0                  | P&A                        |
| LASMO NSR(V)L      |     | 60°44'00.19"          | Gorilla III      | 92-02-02                           | 44.7             | (144.4) | (9,909.0)                | (oil well)                 |
|                    |     |                       |                  | 93-02-24                           |                  |         |                          |                            |
| Panuke PP3A        | 346 | 43°48'40.23"          | Rowan            | 98-03-15                           | 47.2             | (154.8) | 3,305.0                  | P&A                        |
| PanCanadian/NSRL   |     | 60°44'00.19"          | Gorilla III      | 98-04-13                           | 44.6             | (146.3) | (10,843.0)               | (oil well)                 |
| Panuke PP3B        | 347 | 43°48'40.23"          | Rowan            | 98-04-29                           | 47.2             | (154.8) | 4,097.0                  | P&A                        |
| PanCanadian/NSRL   |     | 60°44'00.19"          | Gorilla III      | 98-06-12                           | 44.6             | (146.3) | (13,441.0)               | (oil well)                 |

| Well Name             | D#    | Latitude<br>Longitude | Drilling<br>Unit | Spud<br>Rig<br>Release<br>yy/mm/dd | RT Elevation<br>Water Depth<br>m (ft) | Total<br>Depth<br>m (ft) | Status<br>(Classification) |
|-----------------------|-------|-----------------------|------------------|------------------------------------|---------------------------------------|--------------------------|----------------------------|
| Panuke PP3C           | 354   | 43°48'40.23           | Rowan            | 98-07-19                           | 47.2 (154.8)                          | 4,163.0                  | P&A                        |
| PanCanadian/NSRL      |       | 60°44'00.19"          | Gorilla III      | 99-04-12                           | 44.7 (144.4)                          | (13,658.0)               | (gas well)                 |
| Panuke PP4            | 325   | 43°48'40.14"          | Rowan            | 92-06-27                           | 47.2 (154.9)                          | 2,292.0                  | P&A                        |
| LASMO NSR(V)L         |       | 60°44'00.17"          | Gorilla III      | 92-07-25                           | 44.0 (144.4)                          | (7,520.0)                | (oil well)                 |
| Panuke PP4A*          | 329   | 43°48'40.14"          | Rowan            | 92-07-25                           | 47.2 (154.9)                          | 1,776.0                  | P&A                        |
| LASMO NSR(V)L         |       | 60°44'00.17"          | Gorilla III      | 92-08-02                           | 44.0 (144.4)                          | (5,827.0)                | (oil well)                 |
| Panuke PP4B*          | 326   | 43°48'40.14"          | Rowan            | 92-08-04                           | 47.2 (154.9)                          | 3,054.0                  | P&A                        |
| LASMO NSR(V)L         |       | 60°44'00.17"          | Gorilla III      | 92-10-11                           | 44.0 (144.4)                          | (10,020.0)               | (oil well)                 |
| Panuke PP4C*          | 327   | 43°48'40.14"          | Rowan            | 92-10-11                           | 47.2 (154.9)                          | 3,047.0                  | P&A                        |
| LASMO NSR(V)L         |       | 60°44'00.17"          | Gorilla III      | 92-11-14                           | 44.0 (144.4)                          | (9,997.0)                | (oil well)                 |
| Penobscot B-41        | 169   | 44°10'02.44"          | Sedco H          | 77-02-18                           | 29.9 (98.1)                           | 3,444.0                  | P&A                        |
| Shell-Petro-Canada    |       | 60°06'32.72"          |                  | 77-03-30                           | 117.9 (386.8)                         | (11,300.0)               | (dry)                      |
| Penobscot L-30        | 165   | 44°09'43.55"          | Sedco H          | 76-07-18                           | 29.9 (98.1)                           | 4,267.0                  | P&A                        |
| Petro-Canada-Shell    |       | 60°04'09.33"          |                  | 76-09-23                           | 137.5 (451.1)                         | (14,000.0)               | (oil & gas show)           |
| Peskowesk A-99        | 272   | 44°28'13.84"          | Sedco 706        | 85-04-22                           | 27.5 (90.2)                           | 4,024.0                  | P&A                        |
| Shell PCI et al       |       | 58°58'40.98"          |                  | 85-06-13                           | 62.0 (203.4)                          | (13,202.0)               | (dry)                      |
| Primrose A-41,        | 86/97 | 44°00'05.68"          | Sedco H          | 72-10-15                           | 29.9 (98.1)                           | 3,616.0                  | P&A                        |
| 1a A-41               |       | 59°06'18.26"          |                  | 73-01-27                           | 109.7 (359.9)                         | (11,865.0)               | (gas show)                 |
| Shell                 |       |                       |                  |                                    |                                       |                          |                            |
| Primrose F-41         | 95    | 44°00'29.55"          | Sedco H          | 73-01-30                           | 29.9 (98.1)                           | 2,592.0                  | GS                         |
| Shell                 |       | 59°07'06.52"          |                  | 73-03-05                           | 68.6 (225.1)                          | (8,505.0)                | (gas show)                 |
| Primrose N-50         | 75    | 43°59'48.43"          | Sedco H          | 72-03-14                           | 29.9 (98.1)                           | 1,713.0                  | P&A                        |
| Shell                 |       | 59°06'51.63"          |                  | 72-04-21                           | 90.8 (298.0)                          | (5,622.0)                | (oil & gas well)           |
| Queensland M-88       | 375   | 43°47'55.26"          | Rowan            | 01-12-14                           | 47.0 (154.1)                          | 4,443.0                  | P&A                        |
| PanCanadian-Murphy    |       | 60°43'11.19"          | Gorilla V        | 02-02-10                           | 38.0 (124.6)                          | (14,577.0)               | (gas show)                 |
| S. Desbarres O-76     | 250   | 44°05'56.07"          | Vinland          | 84-04-17                           | 23.7 (77.8)                           | 6,039.0                  | P&A                        |
| Shell-Petro-Can et al |       | 59°55'59.02"          |                  | 84-10-13                           | 69.0 (226.4)                          | (19,813.0)               | (dry)                      |
| Sable Island 1-H-58   | 81    | 43°57'27.17"          | Bawden           | 72-06-03                           | 10.7 (35.1)                           | 3,039.0                  | P&A                        |
| Mobil-Tetco           |       | 60°07'37.81"          | Rig 9            | 72-08-27                           | (n/a)                                 | (9,971.0)                | (oil & gas well)           |
| Sable Island 2-H-58   | 88    | 43°57'27.14"          | Bawden           | 72-10-06                           | 10.6 (34.8)                           | 2,758.0                  | P&A                        |
| Mobil-Tetco           |       | 60°07'37.75"          | Rig 9            | 72-12-31                           | (n/a)                                 | (9,050.0)                | (oil & gas well)           |

| Well Name                 | D#  | Latitude<br>Longitude | Drilling<br>Unit | Spud<br>Rig<br>Release<br>yy/mm/dd | RT Elevation<br>Water Depth<br>m (ft) |           | Total<br>Depth<br>m (ft) | Status<br>(Classification) |
|---------------------------|-----|-----------------------|------------------|------------------------------------|---------------------------------------|-----------|--------------------------|----------------------------|
| Sable Island 3-H-58       | 91  | 43°57'27.21"          | Bawden           | 73-01-01                           | 10.6                                  | (34.8)    | 3,740.0                  | P&A                        |
| Mobil-Tetco               |     | 60°07'37.88"          | Rig 9            | 73-03-21                           |                                       | (n/a)     | (12,270.0)               | (oil & gas well)           |
| Sable Island 4-H-58       | 101 | 43°57'27.24"          | Bawden           | 73-03-22                           | 10.6                                  | (34.8)    | 4,519.0                  | P&A                        |
| Mobil-Tetco               |     | 60°07'37.95"          | Rig 9            | 73-08-11                           |                                       | (n/a)     | (14,827.0)               | (oil & gas well)           |
| Sable Island 5-H-58       | 112 | 43°57'27.10"          | Bawden           | 73-08-15                           | 10.6                                  | (34.8)    | 2,478.0                  | P&A                        |
| Mobil-Tetco               |     | 60°07'37.68"          | Rig 9            | 73-09-18                           |                                       | (n/a)     | (8,130.0)                | (oil & gas well)           |
| Sable Island 6-H-58       | 118 | 43°57'27.07"          | Bawden           | 73-09-22                           | 10.6                                  | (34.8)    | 2,355.0                  | P&A                        |
| Mobil-Tetco               |     | 60°07'37.61"          | Rig 9            | 73-10-18                           |                                       | (n/a)     | (7,727.0)                | (dry)                      |
| Sable Island C-67         | 1   | 43°56'04.90"          | Bawden           | 67-06-07                           | 8.2                                   | (26.9)    | 4,604.0                  | P&A                        |
| Mobil                     |     | 59°55'01.40"          | Rig 18           | 68-01-02                           | 3.9                                   | (12.8)    | (15,106.0)               | (dry)                      |
| Sable Island E-48         | 39  | 43°57'20.35"          | Bawden           | 71-05-28                           | 6.4                                   | (21.0)    | 3,603.0                  | P&A                        |
| Mobil-Tecto               |     | 60°07'24.44"          | Rig 14           | 71-10-15                           | 0.0                                   | 0.0       | (11,820.0)               | (oil & gas well)           |
| Sable Island O-47         | 69  | 43°56'56.70"          | Bawden           | 71-12-13                           | 7.0                                   | (23.0)    | 4,198.0                  | SG                         |
| Mobil-Tecto               |     | 60°06'38.08"          | Rig 14           | 72-07-01                           | 1.8                                   | (5.9)     | (13,775.0)               | (gas well)                 |
| Sachem D-76               | 146 | 44°35'09.22"          | Sedco J          | 75-05-17                           | 29.9                                  | (98.1)    | 4,878.0                  | P&A                        |
| Mobil-Texaco              |     | 57°41'58.29"          |                  | 75-07-30                           | 58.5                                  | (191.9)   | (16,006.0)               | (dry)                      |
| Sambro I-29               | 129 | 43°38'35.29"          | Sedco H          | 74-05-23                           | 29.9                                  | (98.1)    | 3,069.0                  | P&A                        |
| Union et al               |     | 62°48'08.52"          |                  | 74-06-27                           | 193.5                                 | (634.8)   | (10,071.0)               | (dry)                      |
| Sauk A-57                 | 29  | 44°16'05.70"          | Sedneth 1        | 71-04-30                           | 25.9                                  | (85.0)    | 4,575.0                  | P&A                        |
| Shell                     |     | 58°37'44.41"          |                  | 71-07-10                           | 60.0                                  | (196.9)   | (15,010.0)               | (dry)                      |
| Shelburne G-29            | 280 | 42°38'26.87"          | Sedco 710        | 85-03-31                           | 25.0                                  | (82.0)    | 4,005.0                  | P&A                        |
| Petro-Can et al           |     | 63°33'33.46"          |                  | 85-04-06                           | 1,153.5                               | (3,784.4) | (13,140.0)               | (dry)                      |
| Shubenacadie H-100        | 219 | 42°49'28.43"          | Sedco 709        | 82-11-05                           | 24.1                                  | (79.1)    | 4,200.0                  | P&A                        |
| Shell et al               |     | 61°28'42.81"          |                  | 83-02-12                           | 1,476.5                               | (4,842.5) | (13,780.0)               | (dry)                      |
| S. Griffin J-13           | 243 | 44°22'37.77"          | Rowan            | 84-01-08                           | 39.6                                  | (129.9)   | 5,911.0                  | P&A                        |
| Husky/Bow Valley<br>et al |     | 58°01'54.76"          | Gorilla I        | 84-08-20                           | 63.4                                  | (208.0)   | (19,393.0)               | (dry)                      |
| S. Sable B-44             | 312 | 43°53'06.56"          | Rowan            | 88-03-27                           | 42.1                                  | (264.0)   | 5,208.0                  | P&A                        |
| Mobil et al               |     | 59°51'42.09"          | Gorilla I        | 88-07-13                           | 35.9                                  | (118.0)   | (17,085.2)               | (gas well)                 |
| S. Venture O-59           | 217 | 43°58'52.83"          | Rowan            | 82-04-29                           | 35.4                                  | (116.1)   | 6,176.0                  | P&A                        |
| Mobil et al               |     | 59°38'08.49"          | Juneau           | 83-01-02                           | 24.0                                  | (80.1)    | (20,262.0)               | (gas well)                 |
| S. Venture P-60           | 382 | 43°59'50.36"          | Galaxy II        | 01-10-29                           | 48.7                                  | (159.7)   | 4,439.0                  | PROD.                      |

| Well Name          | D#  | Latitude<br>Longitude | Drilling<br>Unit | Spud<br>Rig<br>Release<br>yy/mm/dd | RT Elevation<br>Water Depth<br>m (ft) | Total<br>Depth<br>m (ft) | Status<br>(Classification) |
|--------------------|-----|-----------------------|------------------|------------------------------------|---------------------------------------|--------------------------|----------------------------|
| ExxonMobil         |     | 59°37'41.40"          |                  | 03-01-15                           | 23.0 (75.4)                           | (14,564.0)               | (gas well)                 |
| S. Venture 2 P-60  | 395 | 43°59'50.34"          | Galaxy II        | 04-06-08                           | 55.5 (1,821.0)                        | 5,315.0                  | PROD.                      |
| ExxonMobil         |     | 59°37'41.52"          |                  | 05-06-24                           | 22.9 (75.1)                           | (17,438.0)               | (gas well)                 |
| S. Venture 3 P-60  | 396 | 43°59'50.47"          | Galaxy II        | 05-03-05                           | 55.9 (183.1)                          | 4,666.0                  | PROD.                      |
| ExxonMobil         |     | 59°37'41.55"          |                  | 05-07-01                           | 22.9 (75.1)                           | (15,308.0)               | (gas well)                 |
| Southampton A-25   | 372 | 43°34'09.66"          | Rowan            | 01-09-03                           | 82.0 (269.0)                          | 5,058.0                  | P&A                        |
| PanCanadian        |     | 60°18'16.67"          | Gorilla V        | 01-12-12                           | 47.0 (154.1)                          | (16,594.0)               | (dry)                      |
| Saint Paul P-91    | 235 | 47°10'57.88"          | Bow Drill I      | 83-09-02                           | 24.9 (81.7)                           | 2,885.0                  | P&A                        |
| Petro-Canada et al |     | 60°13'36.83"          |                  | 83-12-31                           | 173.9 (570.5)                         | (9,465.0)                | (dry)                      |
| SW Banquereau F-34 | 227 | 44°03'15.62"          | Bow Drill I      | 83-02-20                           | 24.9 (81.7)                           | 6,309.0                  | P&A                        |
| Petro-Canada et al |     | 58°50'21.60"          |                  | 83-08-30                           | 113.7 (373.0)                         | (20,699.0)               | (gas show)                 |
| Tantallon M-41     | 293 | 43°50'55.96"          | Sedco 709        | 86-02-15                           | 24.0 (78.7)                           | 5,602.0                  | P&A                        |
| PCI et al          |     | 58°22'23.99"          |                  | 86-04-18                           | 1,516.0 (4,974.0)                     | (18,379.0)               | (dry)                      |
| Thebaud C-74       | 295 | 43°53'05.34"          | Rowan            | 86-03-29                           | 41.8 (118.0)                          | 5,150.0                  | P&A                        |
| Mobil et al        |     | 60°11'35.62"          | Gorilla I        | 86-09-26                           | 29.6 (97.0)                           | (16,896.0)               | (gas well)                 |
| Thebaud 1 E-74     | 355 | 43°53'28.21"          | Galaxy II        | 98-11-15                           | 45.0 (147.6)                          | 4,700.0                  | PROD.                      |
| SOEI               |     | 60°11'59.68"          |                  | 00-07-25                           | 29.2 (95.8)                           | (15,420.0)               | (gas well)                 |
| Thebaud 2 E-74     | 356 | 43°53'28.08"          | Galaxy II        | 98-11-18                           | 45.0 (147.6)                          | 4,394.0                  | PROD.                      |
| SOEI               |     | 60°11'59.70"          |                  | 99-09-13                           | 29.2 (95.8)                           | (14,416.0)               | (gas well)                 |
| Thebaud 3 E-74     | 357 | 43°53'28.35"          | Galaxy II        | 98-11-22                           | 45.0 (147.6)                          | 4,523.0                  | PROD.                      |
| SOEI               |     | 60°11'59.66"          |                  | 99-07-26                           | 29.2 (95.8)                           | (14,839.0)               | (gas well)                 |
| Thebaud 4 E-74     | 358 | 43°53'28.21"          | Galaxy II        | 98-11-20                           | 45.0 (147.6)                          | NA                       | PROD.                      |
| SOEI               |     | 60°11'59.87"          |                  | NA                                 | 29.2 (95.8)                           |                          | (gas well)                 |
| Thebaud 5 E-74     | 359 | 43°53'28.21"          | Galaxy II        | 98-12-16                           | 45.0 (147.6)                          | 5,015.0                  | PROD.                      |
| SOEI               |     | 60°11'59.49"          |                  | 99-04-15                           | 29.2 (95.8)                           | (16,453.0)               |                            |
| Thebaud 6 E-74     | 371 | 43°53'28.14"          | Galaxy II        | 01-08-16                           | 55.0 (180.4)                          | 4,011.0                  | PROD.                      |
| SOEI               |     | 60°11'59.78"          |                  | 01-11-09                           | 29.2 (95.8)                           | (13,159.0)               | (gas well)                 |
| Thebaud I-93       | 271 | 43°52'44.54"          | Rowan            | 85-03-27                           | 37.0 (121.4)                          | 5,166.0                  | P&A                        |
| Mobil et al        |     | 60°13'50.94"          | Juneau           | 85-09-30                           | 31.0 (102.0)                          | (16,949.0)               | (gas well)                 |
| Thebaud I-94       | 172 | 43°53'43.67"          | Gulftide         | 78-02-26                           | 29.9 (98.1)                           | 3,962.0                  | P&A                        |
| Mobil-Tetco-PEX    |     | 60°13'38.13"          |                  | 78-07-03                           | 28.0 (91.9)                           | (13,000.0)               | (gas well)                 |

| Well Name             | D#  | Latitude<br>Longitude | Drilling<br>Unit | Spud<br>Rig<br>Release<br>yy/mm/dd | RT Elevation     |           | Total<br>Depth<br>m (ft) | Status<br>(Classification) |
|-----------------------|-----|-----------------------|------------------|------------------------------------|------------------|-----------|--------------------------|----------------------------|
|                       |     |                       |                  |                                    | Water Depth<br>m | (ft)      |                          |                            |
| Thebaud P-84          | 85  | 43°53'59.53"          | Sedco H          | 72-07-08                           | 28.6             | (93.8)    | 4,115.0                  | P&A                        |
| Mobil-Tetco           |     | 60°12'19.34"          |                  | 72-10-13                           | 25.9             | (85.0)    | (13,500.0)               | (gas well)                 |
| Torbrook C-15         | 383 | 42°34'02.60"          | Erik Raude       | 02-11-16                           | 25.0             | (82.0)    | 3,600.0                  | P&A                        |
| EnCana Corporation    |     | 62°17'35.64"          |                  | 03-01-14                           | 1,674.5          | (5,493.8) | (11,811.0)               | (dry)                      |
| Triumph P-50          | 12  | 43°39'51.62"          | Sedneth 1        | 71-08-04                           | 25.9             | (85.0)    | 4,595.0                  | P&A                        |
| Shell                 |     | 59°51'02.36"          |                  | 71-10-10                           | 90.2             | (295.9)   | (15,077.0)               | (gas show)                 |
| Tuscarora C-61        | 99  | 44°40'10.35"          | Sedco H          | 73-04-23                           | 29.9             | (98.1)    | 3,939.0                  | P&A                        |
| Shell                 |     | 58°55'10.85"          |                  | 73-06-02                           | 78.9             | (258.9)   | (12,925.0)               | (dry)                      |
| Uniacke G-72          | 228 | 44°11'29.17"          | Vinland          | 83-05-09                           | 23.5             | (77.1)    | 5,735.0                  | P&A                        |
| Shell-Petro Can et al |     | 59°41'09.75"          |                  | 84-04-04                           | 152.9            | (501.6)   | (18,815.0)               | (gas well)                 |
| Venture B-13          | 195 | 44°02'11.61"          | Rowan            | 80-08-17                           | 33.8             | (110.9)   | 5,368.0                  | P&A                        |
| Mobil et al           |     | 59°32'03.54"          | Juneau           | 81-06-06                           | 24.7             | (81.0)    | (17,611.0)               | (gas well)                 |
| Venture B-43          | 202 | 44°02'00.72"          | Rowan            | 81-07-06                           | 33.8             | (110.9)   | 5,872.0                  | P&A                        |
| Mobil et al           |     | 59°36'37.37"          | Juneau           | 82-04-25                           | 20.4             | (66.9)    | (19,265.0)               | (gas well)                 |
| Venture B-52          | 224 | 44°01'12.88"          | Rowan            | 83-01-19                           | 34.0             | (111.5)   | 5,960.0                  | P&A                        |
| Mobil et al           |     | 59°38'07.76"          | Juneau           | 83-10-27                           | 19.5             | (65.0)    | (19,554.0)               | (gas well)                 |
| Venture D-23          | 178 | 44°02'14.86"          | Gulftide         | 78-11-28                           | 31.7             | (104.0)   | 4,945.0                  | P&A                        |
| Mobil-Texaco-PEX      |     | 59°34'24.72"          |                  | 79-06-16                           | 20.1             | (65.9)    | (16,224.0)               | (gas well)                 |
| Venture H-22          | 232 | 44°01'24.13"          | Zapata           | 83-07-26                           | 38.1             | (125.0)   | 5,944.0                  | P&A                        |
| Mobil et al           |     | 59°33'06.14"          | Scotian          | 84-04-16                           | 24.0             | (78.7)    | (19,501.0)               | (gas well)                 |
| Venture 1 O-32        | 349 | 44°01'59.38"          | Rowan            | 98-06-20                           | 40.0             | (131.2)   | 5,314.0                  | SG                         |
| SOEI                  |     | 59°34'57.19"          | Gorilla II       | 99-11-05                           | 22.0             | (72.2)    | (17,434.0)               | (gas well)                 |
| Venture 2 O-32        | 350 | 44°01'59.48"          | Rowan            | 98-06-12                           | 40.0             | (131.2)   | 630.0                    | SG                         |
| SOEI                  |     | 59°34'57.06"          | Gorilla II       | 01-07-30                           | 22.0             | (72.2)    | (2,066.0)                | (gas well)                 |
| Venture 3 O-32        | 351 | 44°01'59.47"          | Rowan            | 98-06-18                           | 40.0             | (131.2)   | 5,110.0                  | SG                         |
| SOEI                  |     | 59°34'57.20"          | Gorilla II       | 99-10-29                           | 22.0             | (72.2)    | (16,765.0)               | (gas well)                 |
| Venture 4 O-32        | 352 | 44°01'59.39"          | Rowan            | 98-06-16                           | 40.0             | (131.2)   | 5,469.0                  | SG                         |
| SOEI                  |     | 59°34'57.05"          | Gorilla II       | 99-10-23                           | 22.0             | (72.2)    | (17,943.0)               | (gas well)                 |
| Venture 5 O-32        | 353 | 44°01'59.46"          | Rowan            | 98-06-14                           | 40.0             | (131.2)   | 6,029.0                  | SG                         |
| SOEI                  |     | 59°34'57.34"          | Gorilla II       | 00-04-12                           | 22.0             | (72.2)    | (19,780.0)               | (gas well)                 |
| Venture 6 O-32        | 376 | 44°01'59.55"          | Galaxy II        | 02-05-16                           | 57.2             | (187.6)   | 6,025.0                  | PROD.                      |
| ExxonMobil            |     | 59°34'57.33"          |                  | 02-10-23                           | 22.5             | (73.8)    | (19,767.0)               | (gas well)                 |

| Well Name              | D#  | Latitude<br>Longitude | Drilling<br>Unit | Spud<br>Rig<br>Release<br>yy/mm/dd | RT Elevation<br>Water Depth<br>m (ft) | Total<br>Depth<br>m (ft) | Status<br>(Classification) |
|------------------------|-----|-----------------------|------------------|------------------------------------|---------------------------------------|--------------------------|----------------------------|
| Venture 7 O-32         | 397 | 44°01'59.56"          | Galaxy II        | 05-08-05                           | 60.2 (197.5)                          | 6,483.0                  | PROD.                      |
| ExxonMobil             |     | 59°34'57.21"          |                  | 05-12-24                           | 22.0 (72.1)                           | (2,126.9)                | (gas well)                 |
| W. Chebucto K-20       | 296 | 43°39'44.63"          | Bow Drill II     | 86-04-05                           | 22.8 (74.8)                           | 5,369.0                  | P&A                        |
| Husky/Bow Valley et al |     | 59°47'32.44"          |                  | 86-08-11                           | 93.6 (307.1)                          | (17,614.0)               | (gas show)                 |
| Wenonah J-75           | 164 | 43°34'34.44"          | Sedco H          | 76-09-26                           | 29.9 (98.1)                           | 3,670.0                  | P&A                        |
| Petro-Canada-Shell     |     | 60°26'13.73"          |                  | 76-11-15                           | 66.7 (218.8)                          | (12,040.0)               | (dry)                      |
| W. Esperanto B-78      | 216 | 44°47'03.40"          | Vinland          | 82-08-22                           | 23.3 (76.4)                           | 5,703.0                  | P&A                        |
| Petro-Canada et al     |     | 58°26'11.22"          |                  | 83-05-05                           | 91.1 (298.9)                          | (18,711.0)               | (dry)                      |
| W. Olympia O-51        | 277 | 44°00'47.80"          | Rowan            | 85-06-23                           | 38.0 (124.6)                          | 4,816.0                  | P&A                        |
| Mobil et al West       |     | 59°53'03.64"          | Gorilla I        | 85-11-09                           | 38.4 (127.9)                          | (15,800.0)               | (gas well)                 |
| W. Venture B-92        | N/A | 44°01'08.51"          | Glomar           | 84-10-24                           | 37.0 (121.4)                          | 722.0                    | P&A ser. relief            |
| Mobil et al West       |     | 59°43'59.68"          | Labrador 1       | 84-12-13                           | 42.0 (137.8)                          | (2,369.0)                | (dry)                      |
| W. Venture C-62        | 252 | 44°01'02.78"          | Rowan            | 84-05-19                           | 33.8 (110.9)                          | 5,522.0                  | P&A                        |
| Mobil et al            |     | 59°40'00.93"          | Juneau           | 85-03-23                           | 16.0 (54.1)                           | (18,117.0)               | (gas well)                 |
| W. Venture N-01        | 269 | 44°00'58.80"          | Rowan            | 85-01-20                           | 38.1 (12.5)                           | 3,632.0                  | P&A ser. relief            |
| Mobil et al West       |     | 59°45'51.69"          | Gorilla III      | 85-06-30                           | 40.1 (131.6)                          | (11,916.0)               | (dry)                      |
| W. Venture N-91        | 249 | 44°00'45.82"          | Zapata           | 84-04-19                           | 39.3 (128.9)                          | 5,547.0                  | P&A                        |
| Mobil et al            |     | 59°44'27.36"          | Scotian          | 85-07-07                           | 38.1 (125.0)                          | (18,199.0)               | (gas well)                 |
| Weymouth A-45          | 391 | 43°04'01.93"          | Erik Raude       | 03-10-27                           | 25.0 (82.0)                           | 6,520.0                  | P&A                        |
| EnCana Shell           |     | 60°36'16.81"          |                  | 04-05-08                           | 1,689.7 (5,543.6)                     | (21,391.1)               | (dry)                      |
| Whycocomagh N-90       | 304 | 43°39'50.83"          | Sedco 710        | 87-04-20                           | 24.1 (79.0)                           | 3,535.5                  | P&A                        |
| Canterra et al         |     | 60°28'03.71"          |                  | 87-05-26                           | 67.7 (222.1)                          | (11,599.4)               | (dry)                      |
| Wyandot E-53           | 18  | 44°52'20.70"          | Sedco H          | 70-11-07                           | 31.4 (103.0)                          | 3,049.0                  | P&A                        |
| Shell                  |     | 59°23'54.05"          |                  | 70-12-14                           | 121.0 (397.0)                         | (10,005.0)               | (oil show)                 |